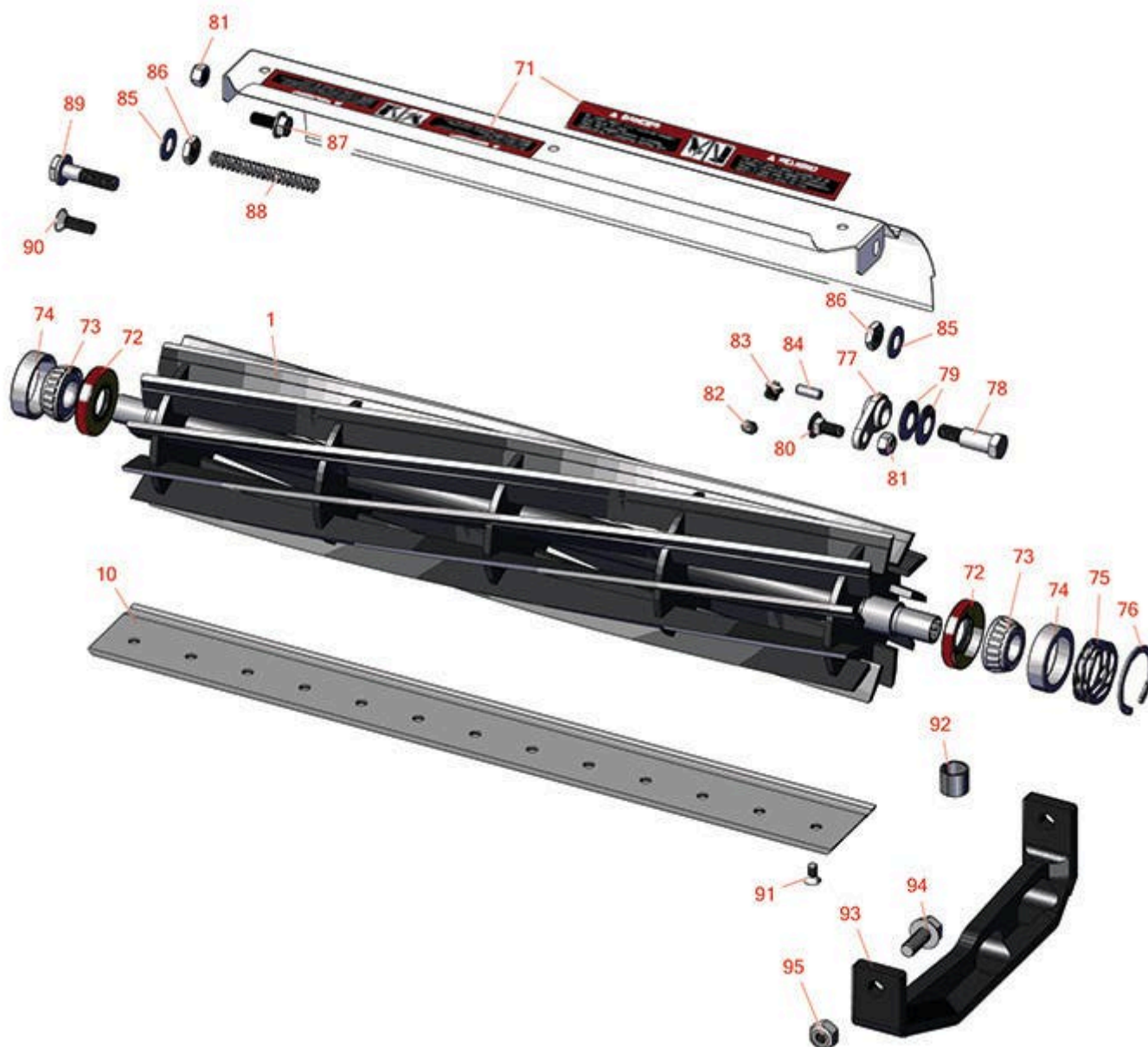




Replaces John Deere 6500A E-Cut Reel Mower Parts

Cutting Unit
Reel & Bedknife



All original equipment manufacturers names and part numbers are used for identification purposes only, and we are in no way implying that our products are original equipment parts. Prices subject to change without notice.



Replaces John Deere 6500A E-Cut Reel Mower Parts

Cutting Unit
Reel & Bedknife



Item No	R&R Part No.	OEM Part No.	Description	Qty Req	Order Quantity
---------	--------------	--------------	-------------	---------	----------------

R&R Reels, Lifetime Guaranteed

1	RTCA19350	TCA19350	Reel - 7 Blade	1
---	-----------	----------	----------------	---

Detail Description: R&R Reel blades are expertly crafted from premium high carbon-boron alloy steel, heat-treated to perfectly complement both R&R and OEM bedknives. Each reel undergoes precision cylindrical grinding on bearing surfaces, followed by relief grinding for optimal performance. Advanced computer balancing ensures extended reel and bearing life. Backed by our lifetime guarantee against defects in materials and craftsmanship under normal use, R&R Reels deliver unmatched durability and cutting precision you can trust.:

1	RTCA19351	TCA19351	Reel - 11 Blade	1
---	-----------	----------	-----------------	---

Detail Description: R&R Reel blades are expertly crafted from premium high carbon-boron alloy steel, heat-treated to perfectly complement both R&R and OEM bedknives. Each reel undergoes precision cylindrical grinding on bearing surfaces, followed by relief grinding for optimal performance. Advanced computer balancing ensures extended reel and bearing life. Backed by our lifetime guarantee against defects in materials and craftsmanship under normal use, R&R Reels deliver unmatched durability and cutting precision you can trust.:

R&R Bedknives, Lifetime Guaranteed

10	R130116	MT4846, UC18877	Bedknife - Razor Tool Steel - 22 Tournament Cut	1
----	---------	--------------------	--	---

Detail Description: R&R Razor bedknives are manufactured from premium alloy tool steel steel and then hardened to RC48-51 to match the temper of our Razor reel blades and original equipment premium series reels. Bedknives are surface ground on the top and front edge and specially packaged for rust prevention. All R&R Bedknives now have an increased front edge grind for added life. All R&R Bedknives are guaranteed against defects in material and workmanship under normal use for the life of the part. You can expect up to double the life over standard bedknives.:

Other Parts Available

71	RMT6517	MT6517	Label - Warning	2
72	RET14566	ET14566	Seal - Reel	2
73	R254-78	JD8188	Tapered Bearing Cone	2
74	R254-79	JD8226	Cup - Bearing	2

Detail Description: Use R254-79M installation mandrel to properly install race.:

All original equipment manufacturers names and part numbers are used for identification purposes only, and we are in no way implying that our products are original equipment parts. Prices subject to change without notice.



Replaces John Deere 6500A E-Cut Reel Mower Parts

*Cutting Unit
Reel & Bedknife*



Item No	R&R Part No.	OEM Part No.	Description	Qty Req	Order Quantity
75	RTC23880	TCU23880, TCU28964	Compression Spring - Reel Bearing	1	
76	R40M7226	40M1862, 40M7226	Ring - Retaining	1	
77	RTC24334	TCU24334	Retainer	2	
78	RMT3016	MT3016	Bolt - Bed Bar	2	
79	RN168012	N168012	Washer - Spring	4	
80	R03M7184	03M7184	Bolt - Carriage M8	2	
81	RH137328	H137328	Locknut	4	
82	R302-5	JD7797, JD7842, JD7844	Fitting - Grease	4	
83	R170714	E14814	Fitting - Pressure Relief	2	
84	RR30587	30587, R30587	Pin - Dowell 1/4 Dia. x .75	4	
85	RET16679	ET16679	Washer - Spring	8	
86	R14M7152	14M7152	Nut - 10mm x 1.5 Jam	2	
87	R19M7866	19M7866	Bolt - Flanged Hex M8-1.25 x 20	2	
88	RTC25398	TCU25398	Compression Spring	1	
89	R19M7804	19M7804	Bolt - Flanged Hex M10-1.5 x 40	4	
90	R19M7585	19M7585	Screw - M8 x 25	2	
91	R101278	21M7194	Screw - Bedknife	11	
92	RMT74	MT74	Bushing - Roller Bkt	2	
93	RMT2527	MT2527	Shoe - Skid	2	

All original equipment manufacturers names and part numbers are used for identification purposes only, and we are in no way implying that our products are original equipment parts. Prices subject to change without notice.



Replaces John Deere 6500A E-Cut Reel Mower Parts

*Cutting Unit
Reel & Bedknife*



Item No	R&R Part No.	OEM Part No.	Description	Qty Req	Order Quantity
94	R19M7785	19M7785	Bolt - Hex Washer M10-1.5 x 25	4	
95	R14M7400	14M7400	Locknut - 10mm	4	

All original equipment manufacturers names and part numbers are used for identification purposes only, and we are in no way implying that our products are original equipment parts. Prices subject to change without notice.