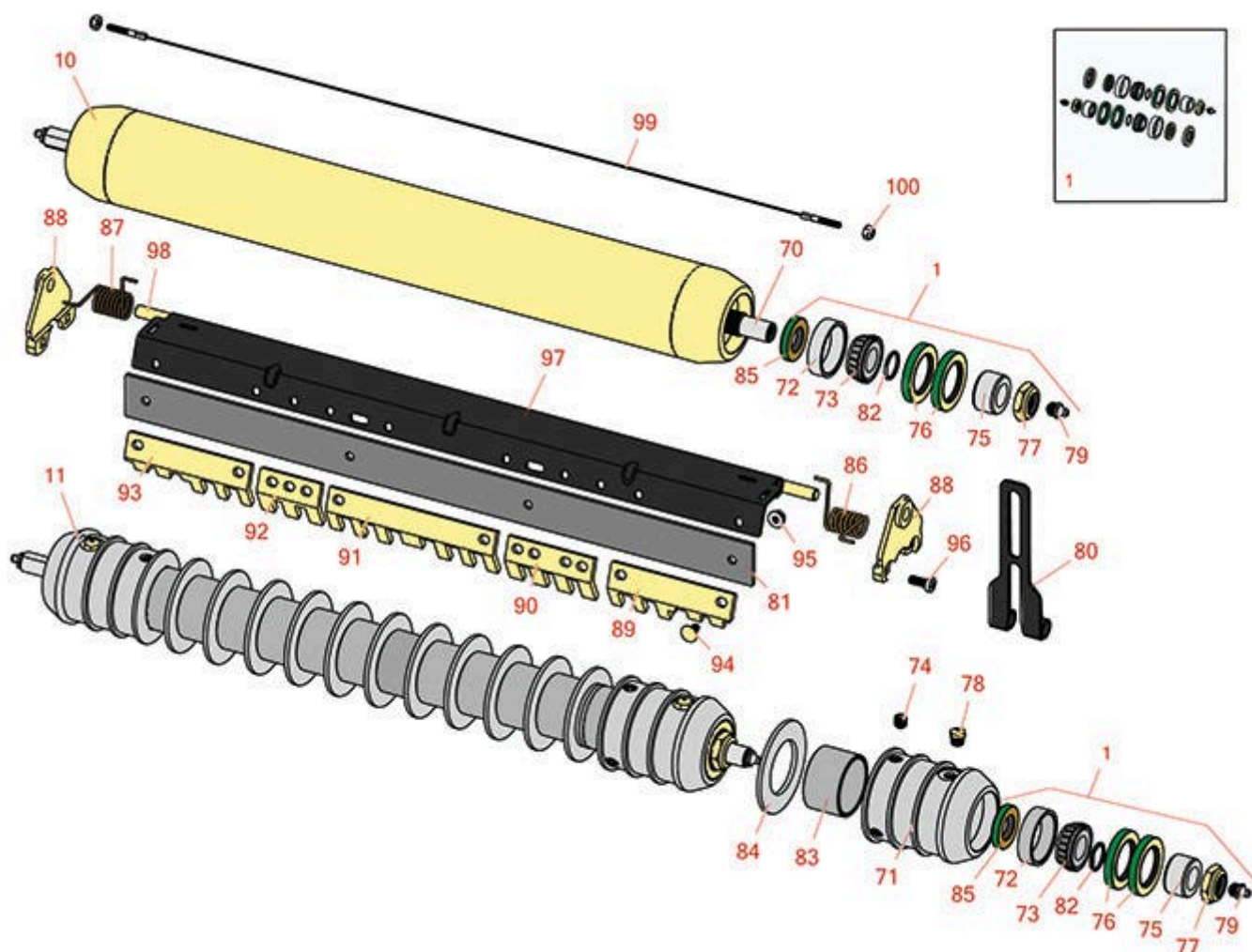




# Replaces John Deere 6700A Reel Mower

## Parts

Cutting Unit  
Rollers



All original equipment manufacturers names and part numbers are used for identification purposes only, and we are in no way implying that our products are original equipment parts. Prices subject to change without notice.



# Replaces John Deere 6700A Reel Mower

## Parts

Cutting Unit  
Rollers



Item No	R&R Part No.	OEM Part No.	Description	Qty Req	Order Quantity
---------	--------------	--------------	-------------	---------	----------------

### Overhaul Kits

1	<b>RAET10632</b>	AET10632	Overhaul Kit - Roller	1	
<i>Detail Description: Includes 4 ea: RET15755 Seal; 2 ea: R237-54 O-Ring, R253-122 Seal, R254-78 Bearing, R254-79 Cup, R3296-15 Locknut, R471219 Grease Zerk, RET15726 Sleeve, RET15756 Seal;</i>					

### Rollers

10	<b>RAET11263</b>	AET11263, AMT2967	Roller - Smooth Tubular Steel	1	
<i>Detail Description: Constructed with a through shaft, this heavy duty roller uses greasable tapered bearings for extended life.:</i>					

11	<b>R500512</b>	AMT2966, BM25317	Roller - Grooved Repairable Steel	1	
<i>Detail Description: Constructed with a through shaft and greasable ball bearings. This roller can be repaired by unscrewing the ends and replacing the series of washers and spacers.:</i>					

### Other Parts Available

70	<b>RET17515</b>	ET17515	Shaft - Roller	1	
71	<b>R500511</b>		Roller End - Threaded 3	2	
72	<b>R254-79</b>	JD8226	Cup - Bearing	2	

*Detail Description: Use R254-79M installation mandrel to properly install race.:*

73	<b>R254-78</b>	JD8188	Tapered Bearing Cone	2	
74	<b>R150691</b>		Screw - Set Nyloc 3/8-16 x 3/8	2	
75	<b>RET15726</b>	ET15726, RET15726	Sleeve - Wear Hardened	2	
76	<b>RET15755</b>	ET15755	Seal - Oil	2	
77	<b>R3296-15</b>	N101345	Locknut - 3/4-16 Nylon Jam	2	
78	<b>R170714</b>	E14814	Fitting - Pressure Relief	2	

All original equipment manufacturers names and part numbers are used for identification purposes only, and we are in no way implying that our products are original equipment parts. Prices subject to change without notice.



# Replaces John Deere 6700A Reel Mower

## Parts

*Cutting Unit  
Rollers*



Item No	R&R Part No.	OEM Part No.	Description	Qty Req	Order Quantity
79	<b>R471219</b>	471219, 471231, JD7759, JD7798	Zerk - Grease	2	
80	<b>RTC26998</b>	TCU26998	Panel	2	
81	<b>RMT2595</b>	MT2595, MT2895	Scraper Blade - Solid Roller	1	
82	<b>R237-54</b>	U46731, U6731	O-Ring - Small	2	
83	<b>R150676</b>		Spacer - 2-3/4 Dia x 1-1/4 L	10	
84	<b>R150673</b>		Washer - 3 Repairable Roller	11	
85	<b>RET15756</b>	ET15756, MT1739, MT739	Seal	2	
86	<b>RET17630</b>	ET17630	Spring - Torsion RH	1	
87	<b>RET17629</b>	ET17629	Spring - Torsion LH	1	
88	<b>RMT2407</b>	MT2407	Bracket - Roller Scraper	2	
89	<b>RMT5159</b>	MT5159	Scraper - Fits J.D. LH End	1	
90	<b>RMT2341</b>	MT2341	Section - Grooved Scraper 4 Tooth	1	
91	<b>RMT2340</b>	MT2340	Scraper - Fits J.D. Center	1	
92	<b>RMT2342</b>	MT2342	Section - Grooved Scraper 3 Tooth	1	
93	<b>RMT5158</b>	MT5158	Scraper - Fits J.D. RH End	1	
94	<b>R03M7251</b>	03M7251	Bolt - Gr. Roller Scraper	10	
95	<b>R14M7303</b>	14M7303	Nut - 6mm x 1.0 Flanged	10	
96	<b>R21M7246</b>	21M7246	Screw	4	

All original equipment manufacturers names and part numbers are used for identification purposes only, and we are in no way implying that our products are original equipment parts. Prices subject to change without notice.



# Replaces John Deere 6700A Reel Mower

## Parts

*Cutting Unit  
Rollers*



Item No	R&R Part No.	OEM Part No.	Description	Qty Req	Order Quantity
97	<b>R500571</b>	MT2369	Bar - Scraper	1	
98	<b>RET17757</b>	ET11757, ET17757	Pin - Scraper	1	
99	<b>RTCA19566</b>	TCA19566	Cable - Smooth Roller Scraper	1	
100	<b>RU45916</b>	14M7298, U45916	Locknut - 10-24 ESNA	2	

All original equipment manufacturers names and part numbers are used for identification purposes only, and we are in no way implying that our products are original equipment parts. Prices subject to change without notice.