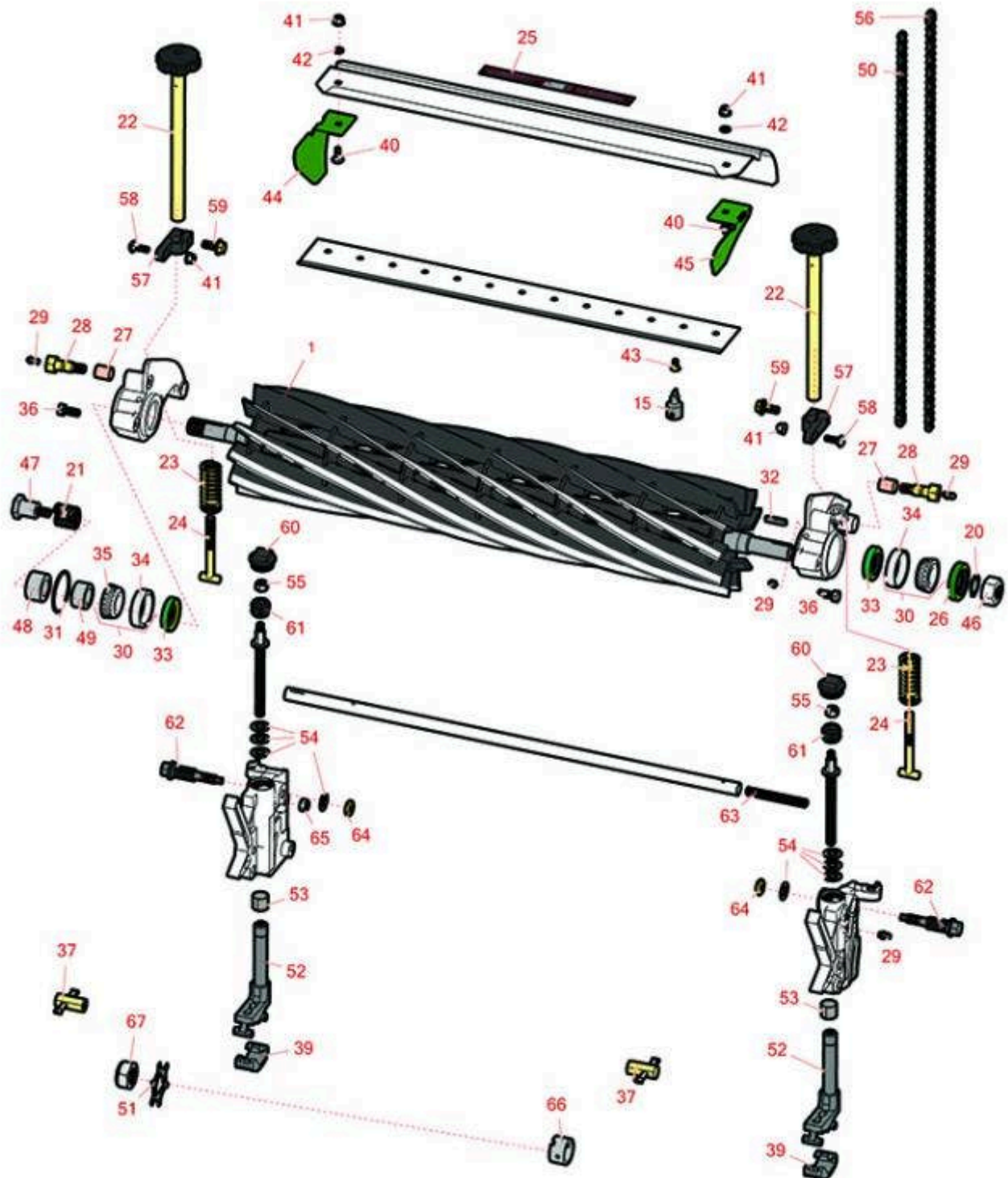




# Replaces John Deere 260SL Walk-Behind Greens Mower Parts

Cutting Unit  
Reel & Bedknife



All original equipment manufacturers names and part numbers are used for identification purposes only, and we are in no way implying that our products are original equipment parts. Prices subject to change without notice.



# Replaces John Deere 260SL Walk-Behind Greens Mower Parts

Cutting Unit  
Reel & Bedknife



Item No	R&R Part No.	OEM Part No.	Description	Qty Req	Order Quantity
---------	--------------	--------------	-------------	---------	----------------

## R&R Reels, Lifetime Guaranteed

1	<b>RAMT2903</b>	AMT2903	Reel - 7 Blade 26in	1
---	-----------------	---------	---------------------	---

*Detail Description: R&R Reel blades are expertly crafted from premium high carbon-boron alloy steel, heat-treated to perfectly complement both R&R and OEM bedknives. Each reel undergoes precision cylindrical grinding on bearing surfaces, followed by relief grinding for optimal performance. Advanced computer balancing ensures extended reel and bearing life. Backed by our lifetime guarantee against defects in materials and craftsmanship under normal use, R&R Reels deliver unmatched durability and cutting precision you can trust.:*

1	<b>RAMT2898</b>	AMT2716, AMT2898	Reel - 11 Blade 26in	1
---	-----------------	---------------------	----------------------	---

*Detail Description: R&R Reel blades are expertly crafted from premium high carbon-boron alloy steel, heat-treated to perfectly complement both R&R and OEM bedknives. Each reel undergoes precision cylindrical grinding on bearing surfaces, followed by relief grinding for optimal performance. Advanced computer balancing ensures extended reel and bearing life. Backed by our lifetime guarantee against defects in materials and craftsmanship under normal use, R&R Reels deliver unmatched durability and cutting precision you can trust.:*

## Service Tools

15	<b>R101278T</b>		Bedknife Screw Driver Tool	0
----	-----------------	--	----------------------------	---

*Tech Note: Easily install and remove bed knife screws with the help of a ratchet. Tool manufactured with hardened alloy steel.:*

*Detail Description: Easily install and remove bed knife screws with the help of a ratchet. Tool manufactured with hardened alloy steel.:*

## Other Parts Available

20	<b>R40M7080</b>	40M7080, ET11059	Ring - Snap	1
----	-----------------	---------------------	-------------	---

21	<b>RET11053</b>	ET11053	Spring - Reel	1
----	-----------------	---------	---------------	---

22	<b>RAMT2798</b>	AMT2798	Handle - Adjuster	2
----	-----------------	---------	-------------------	---

23	<b>RET11070</b>	ET11070	Spring - Bed Bar	2
----	-----------------	---------	------------------	---

24	<b>RET11372</b>	ET11372	Bolt - Adjusting Bed Bar	2
----	-----------------	---------	--------------------------	---

All original equipment manufacturers names and part numbers are used for identification purposes only, and we are in no way implying that our products are original equipment parts. Prices subject to change without notice.



# Replaces John Deere 260SL Walk-Behind Greens Mower Parts

Cutting Unit  
Reel & Bedknife



Item No	R&R Part No.	OEM Part No.	Description	Qty Req	Order Quantity
25	<b>RMT6517</b>	MT6517	Label - Warning	1	
26	<b>RET11073</b>	ET11073	Seal - Reel Outer	1	
27	<b>RP44946</b>	P44946	Bushing - Bronze	2	
28	<b>RET11371</b>	ET11371	Screw - Special	2	
29	<b>R302-5</b>	JD7797, JD7842, JD7844	Fitting - Grease	6	
30	<b>R500610</b>	AMT1108	Tapered Bearing Set - Cup and Cone	2	
<i>Detail Description: Includes:RAMT1108 &amp; RMT2108:</i>					
31	<b>RM44162</b>	M44162	O-Ring - Reel	1	
32	<b>R49M7049</b>	49M7049	Key - 5mm x 22mm	1	
33	<b>RMT1160</b>	MT1160	Seal - Reel	2	
34	<b>RMT2108</b>	MT2108	Tapered Bearing Cup	2	
35	<b>RAMT1108</b>	AMT1108	Tapered Bearing Cone	2	
36	<b>R19M7881</b>	19M7881	Bolt - Hex HD M8-1.25 x 20	2	
37	<b>RET11356</b>	ET11356	Nut - Adjusting	2	
39	<b>RUC16110</b>	UC16110	Clamp	2	
40	<b>R03M7221</b>	03M7221	Bolt - Carriage M6 x 16	8	
41	<b>R14M7397</b>	14M7397, 14M7463	Locknut - 6mm x 1.0 ESNA Flanged	4	
42	<b>R24M7139</b>	24M7139	Washer - Flat 6mm	2	
43	<b>R101278</b>	21M7194	Screw - Bedknife	13	
44	<b>RTC29522</b>	TCU29522	Grass Deflector	1	

All original equipment manufacturers names and part numbers are used for identification purposes only, and we are in no way implying that our products are original equipment parts. Prices subject to change without notice.



# Replaces John Deere 260SL Walk-Behind Greens Mower Parts

*Cutting Unit  
Reel & Bedknife*



Item No	R&R Part No.	OEM Part No.	Description	Qty Req	Order Quantity
45	RTCU29523	TCU29523	Grass Deflector	1	
46	R14M7306	14M7306	Nut - M20-1.5	1	
47	RET11367	ET11367	Cap Screw - Special	1	
48	RET11464	ET11464	Spacer	1	
49	RET11368	ET11368	Spacer	1	
50	RTCA16596	TCA16596	Roller Chain #35	1	
51	RET14707	ET14707	Verti-Cut Blade - .025 x 2.375	75	
52	RAUC13515	AUC13515	Adjuster	2	
53	RMT74	MT74	Bushing - Roller Bkt	2	
54	RET16679	ET16679	Washer - Spring	8	
55	RM148268	M148268	Lock Nut	2	
56	RTCA16595	TCA16595	Chain - Rear Roller	1	
57	RUC16469	MT6952, UC16469	Clamp	2	
58	R03M7222	03M7222	Bolt - Carriage M6-1.0 x 20	2	
59	R19M7866	19M7866	Bolt - Flanged Hex M8-1.25 x 20	2	
60	RUC16102	TCU24949, UC16102	Cap	2	
61	RTCU40491	TCU24683, TCU40491	Worm Gear	2	
62	RTCU26458	TCU26458	Worm Gear	2	
63	RTCU25398	TCU25398	Compression Spring	1	
64	R14M7152	14M7152	Nut - 10mm x 1.5 Jam	2	

All original equipment manufacturers names and part numbers are used for identification purposes only, and we are in no way implying that our products are original equipment parts. Prices subject to change without notice.



# Replaces John Deere 260SL Walk-Behind Greens Mower Parts

*Cutting Unit  
Reel & Bedknife*



Item No	R&R Part No.	OEM Part No.	Description	Qty Req	Order Quantity
65	<b>RH137328</b>	H137328	Locknut	2	
66	<b>RET14917</b>	ET14917	Spacer	1	
67	<b>RN198341</b>	N198341	Nut - Nyloc 7/8-14	1	

All original equipment manufacturers names and part numbers are used for identification purposes only, and we are in no way implying that our products are original equipment parts. Prices subject to change without notice.