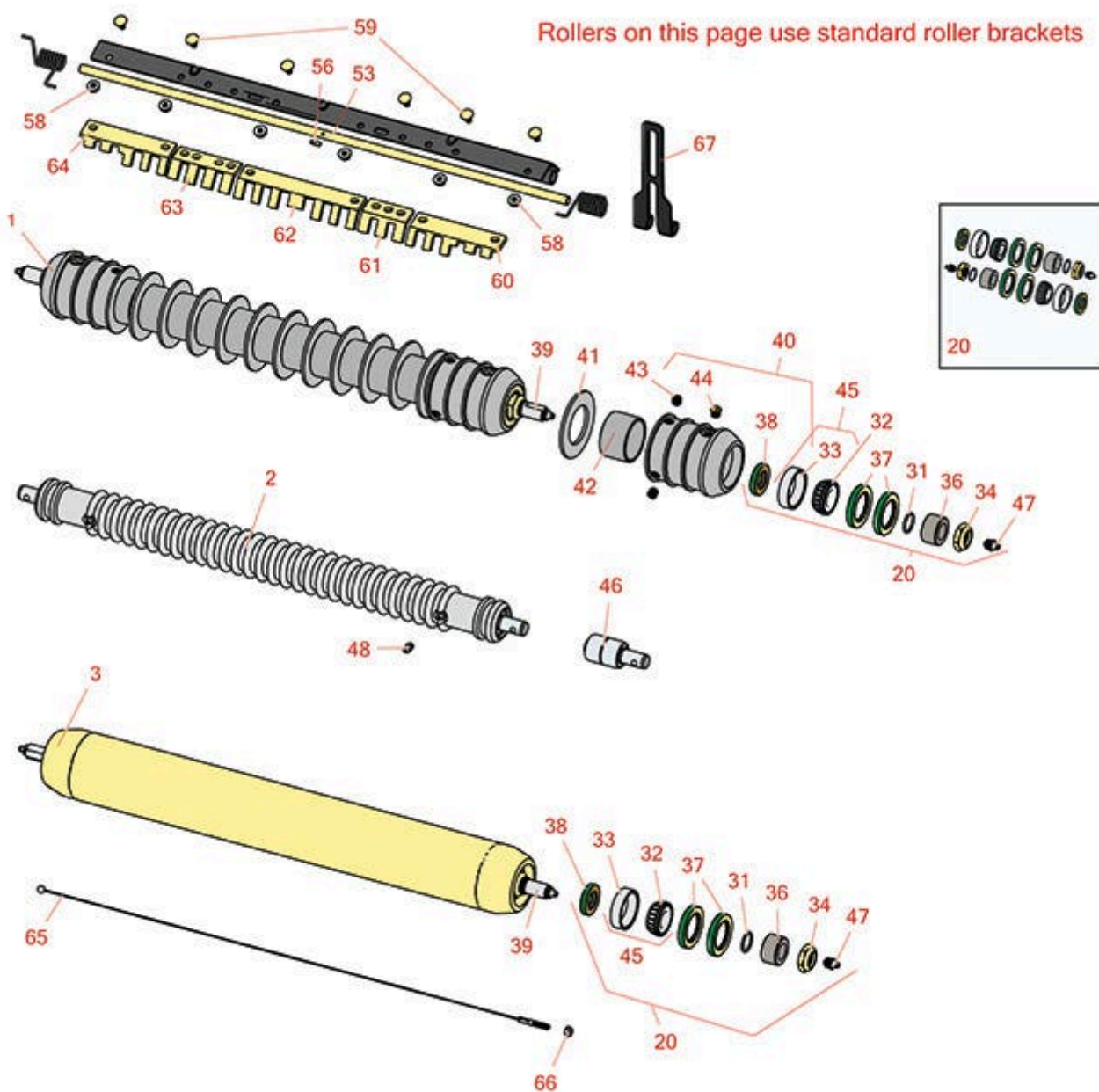




# Replaces John Deere 2400 Riding Greens Mower Parts

Cutting Unit  
Rollers



All original equipment manufacturers names and part numbers are used for identification purposes only, and we are in no way implying that our products are original equipment parts. Prices subject to change without notice.



# Replaces John Deere 2400 Riding Greens Mower Parts

Cutting Unit  
Rollers



Item No	R&R Part No.	OEM Part No.	Description	Qty Req	Order Quantity
---------	--------------	--------------	-------------	---------	----------------

## Rollers

1	<b>R500512</b>	AMT2966, BM25317	Roller - Grooved Repairable Steel	1	
---	----------------	---------------------	-----------------------------------	---	--

*Detail Description: Constructed with a through shaft and greasable ball bearings. This roller can be repaired by unscrewing the ends and replacing the series of washers and spacers.:*

2	<b>RBTC10267</b>	BTC10267	Roller - Grooved Steel	1	
---	------------------	----------	------------------------	---	--

3	<b>RAET11263</b>	AET11263, AMT2967	Roller - Smooth Tubular Steel	1	
---	------------------	----------------------	-------------------------------	---	--

*Detail Description: Constructed with a through shaft, this heavy duty roller uses greasable tapered bearings for extended life.:*

## Overhaul Kits

20	<b>RAET10632</b>	AET10632	Overhaul Kit - Roller	1	
----	------------------	----------	-----------------------	---	--

*Detail Description: Includes 4 ea: RET15755 Seal; 2 ea: R237-54 O-Ring, R253-122 Seal, R254-78 Bearing, R254-79 Cup, R3296-15 Locknut, R471219 Grease Zerk, RET15726 Sleeve, RET15756 Seal:*

## Other Parts Available

31	<b>R237-54</b>	U46731, U6731	O-Ring - Small	2	
----	----------------	------------------	----------------	---	--

32	<b>R254-78</b>	JD8188	Tapered Bearing Cone	2	
----	----------------	--------	----------------------	---	--

33	<b>R254-79</b>	JD8226	Cup - Bearing	2	
----	----------------	--------	---------------	---	--

*Detail Description: Use R254-79M installation mandrel to properly install race.:*

34	<b>R3296-15</b>	N101345	Locknut - 3/4-16 Nylon Jam	2	
----	-----------------	---------	----------------------------	---	--

36	<b>RET15726</b>	ET15726, RET15726	Sleeve - Wear Hardened	2	
----	-----------------	----------------------	------------------------	---	--

37	<b>RET15755</b>	ET15755	Seal - Oil	2	
----	-----------------	---------	------------	---	--

All original equipment manufacturers names and part numbers are used for identification purposes only, and we are in no way implying that our products are original equipment parts. Prices subject to change without notice.



# Replaces John Deere 2400 Riding Greens Mower Parts

Cutting Unit  
Rollers



Item No	R&R Part No.	OEM Part No.	Description	Qty Req	Order Quantity
38	RET15756	ET15756, MT1739, MT739	Seal	2	
39	RET17515	ET17515	Shaft - Roller	1	
40	R500511		Roller End - Threaded 3	2	
41	R150673		Washer - 3 Repairable Roller	10	
42	R150676		Spacer - 2-3/4 Dia x 1-1/4 L	11	
43	R150691		Screw - Set Nyloc 3/8-16 x 3/8	4	
44	R170714	E14814	Fitting - Pressure Relief	2	
45	R500534		Bearing - with Cup	2	
<i>Detail Description: Kit includes: 1 ea R254-78- Bearing Cone &amp; R254-79 Bearing Cone:</i>					
46	RAA35741	AA35741, AET10129, TCA22836	Bearing	2	
<i>Detail Description: 1/4" Side Hole:</i>					
47	R471219	471219, 471231, JD7759, JD7798	Zerk - Grease	2	
48	R302-5	JD7797, JD7842, JD7844	Fitting - Grease	2	
56	R34M7010	34M7010	Pin - Spring	1	
57	RET17757	ET11757, ET17757	Pin - Scraper	1	
58	R14M7303	14M7303	Nut - 6mm x 1.0 Flanged	10	
59	R03M7251	03M7251	Bolt - Gr. Roller Scraper	10	

All original equipment manufacturers names and part numbers are used for identification purposes only, and we are in no way implying that our products are original equipment parts. Prices subject to change without notice.



# Replaces John Deere 2400 Riding Greens Mower Parts

*Cutting Unit  
Rollers*



Item No	R&R Part No.	OEM Part No.	Description	Qty Req	Order Quantity
60	<b>RMT5159</b>	MT5159	Scraper - Fits J.D. LH End	1	
61	<b>RMT2342</b>	MT2342	Section - Grooved Scraper 3 Tooth	1	
62	<b>RMT2340</b>	MT2340	Scraper - Fits J.D. Center	1	
63	<b>RMT2341</b>	MT2341	Section - Grooved Scraper 4 Tooth	1	
64	<b>RMT5158</b>	MT5158	Scraper - Fits J.D. RH End	1	
65	<b>RTCA19566</b>	TCA19566	Cable - Smooth Roller Scraper	1	
66	<b>RU45916</b>	14M7298, U45916	Locknut - 10-24 ESNA	2	
67	<b>RTCUC26998</b>	TCUC26998	Panel	2	

All original equipment manufacturers names and part numbers are used for identification purposes only, and we are in no way implying that our products are original equipment parts. Prices subject to change without notice.