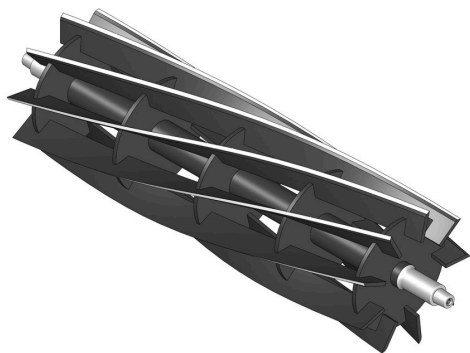




## Reel - 9 Blade

R5002476



### Details

R&R Reel blades are manufactured from high carbon-boron alloy steel and then hardened to RC46-49 to match the temper of our bedknives and original equipment bedknives. All R&R Reels are cylindrically ground on bearing surfaces and then relief ground. Reels are then precision computer balanced for extended bearing and reel life. R&R Products Reels are guaranteed against defects in material and workmanship for the life of the reel under normal use.

- High Carbon-Boron Alloy Steel
- Cylindrically Ground on Bearing Surfaces
- Precision Computer Balanced

### Replaces

Jacobsen 5002476

### Specifications

Manufacturer R&R Products

### Fits Models

Jacobsen LF-135  
Jacobsen LF-3400  
Jacobsen LF-3800  
Jacobsen LF-4677  
Jacobsen LF-570

**Baber Turf Equipment Co.**

Unit 6 / 10 Firth Street Auckland, 2113  
09 294 6040

<https://baber.rrproducts.com/>