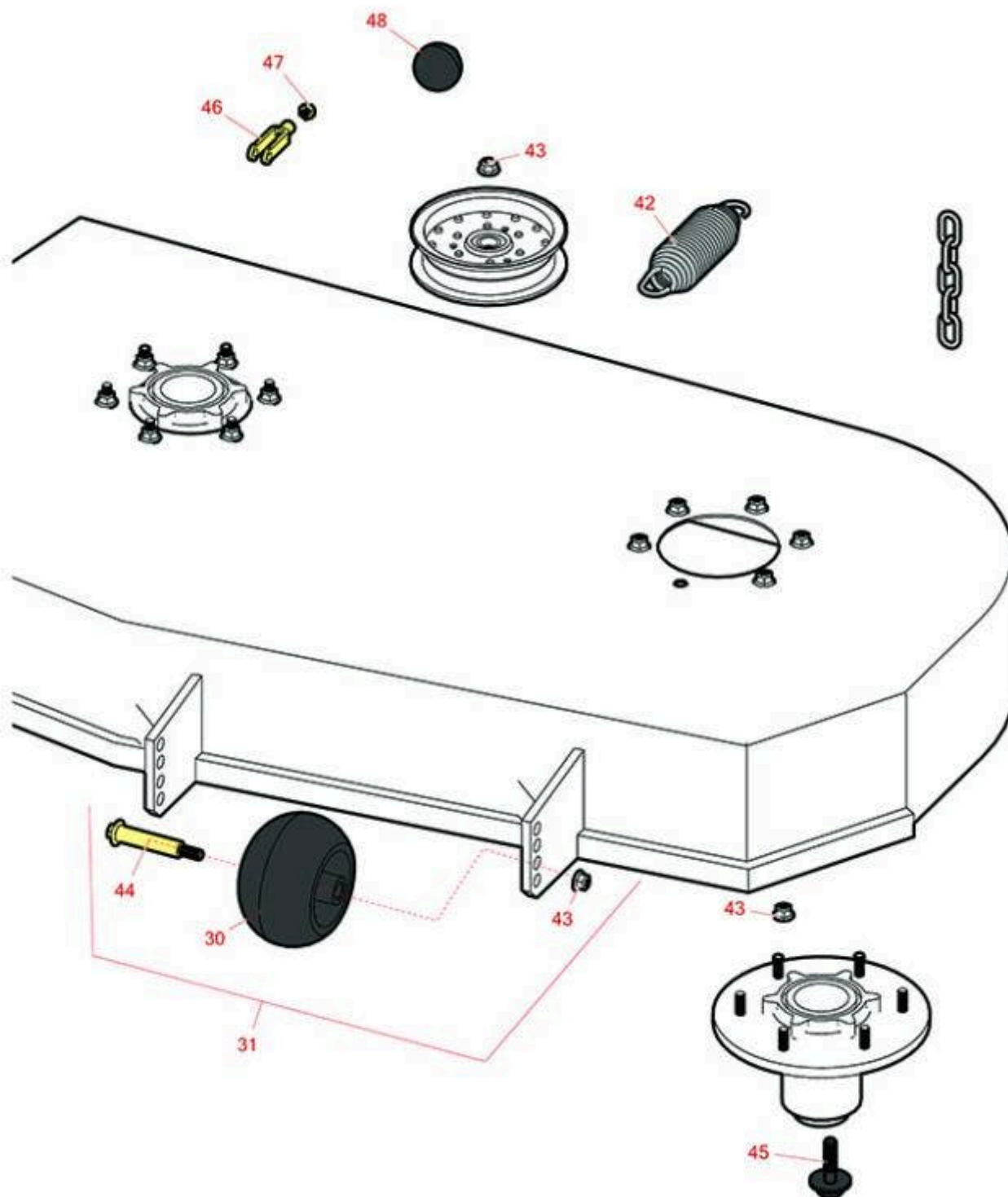




## Replaces Exmark Quest SP Series Parts

Zero-Turn Mower with 44 in Deck - Models QSP20BV443,  
QSP20KAS443, QSP20KAX443  
44in Deck



All original equipment manufacturers names and part numbers are used for identification purposes only, and we are in no way implying that our products are original equipment parts. Prices subject to change without notice.



## Replaces Exmark Quest SP Series Parts

Zero-Turn Mower with 44 in Deck - Models QSP20BV443,  
QSP20KAS443, QSP20KAX443  
44in Deck



| Item No                      | R&R Part No.     | OEM Part No.          | Description                    | Qty Req | Order Quantity |
|------------------------------|------------------|-----------------------|--------------------------------|---------|----------------|
| <b>Wheel</b>                 |                  |                       |                                |         |                |
| 30                           | <b>R68-2730</b>  | 1-603299              | Wheel - Anti Scalp             | 2       |                |
| 31                           | <b>R109-6388</b> | 109-6388              | Roller Kit - Anti Scalp        | 2       |                |
| <b>Other Parts Available</b> |                  |                       |                                |         |                |
| 42                           | <b>R116-6317</b> | 116-0133,<br>116-6317 | Spring - Extension             | 1       |                |
| 43                           | <b>R104-8301</b> | 104-8301,<br>109-6658 | Locknut - 3/8-16 Nylon Flanged | 19      |                |
| 44                           | <b>R112-3977</b> | 112-3977              | Bolt- Shoulder                 | 2       |                |
| 45                           | <b>R116-0005</b> | 116-0005              | Bolt- Blade, - Sems 7/16-20    | 2       |                |
| 46                           | <b>R282-2</b>    | 1-303105              | Yoke                           | 2       |                |
| 47                           | <b>R3220-2</b>   | 3220-2                | Nut - Jam - 5/16-24            | 2       |                |
| 48                           | <b>R233-48</b>   | 233-48                | Knob                           | 1       |                |

All original equipment manufacturers names and part numbers are used for identification purposes only, and we are in no way implying that our products are original equipment parts. Prices subject to change without notice.