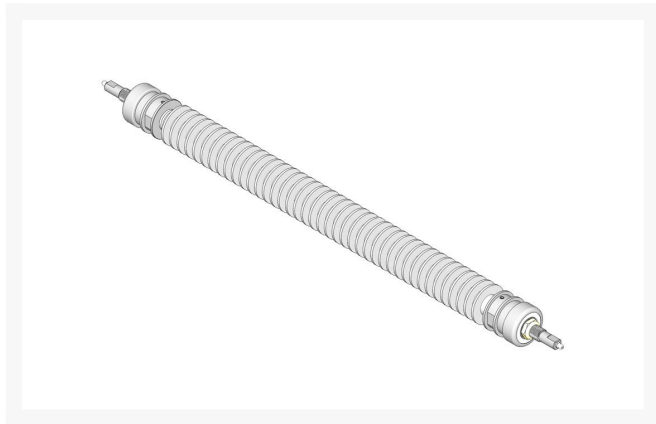




Roller - Grooved Repairable Steel

R500638



Details

Constructed with a through shaft and greasable tapered bearings for extended life, this roller can be repaired by unscrewing the ends and replacing the series of washers and spacers. Body Length: 30-1/2" & Shaft Length: 35"

Specifications

Manufacturer	R&R Products
Overhaul Kit No.	R100135
Roller Body	2.375 in
Diameter	
Weight	18 lb

Fits Models

Ransomes 213, 350 & 5/7 Fairway

Replacement Parts

R100135	Overhaul Kit - Roller
R500534	Bearing - with Cup
R500637	Shaft - 35 Fits 2 3/8 Roller
R150651	Spacer - 2-3/8 Roller
R150653	Washer - 2-3/8 Roller
R150651A	Spacer - 1/8
R500631	Roller End - 2-3/8 Grooved
R150690	Screw - Set 1/4-20 x 1/4
R253-122	Seal
R254-79	Cup - Bearing
R254-78	Tapered Bearing Cone
R150674	Sleeve - Wear 3/4 Plated
R253-117	Seal - Outer Triple Lip
R3296-15	Locknut - 3/4-16 Nylon

Baber Turf Equipment Co.

Unit 6 / 10 Firth Street Auckland, 2113
09 294 6040

<https://baber.rrproducts.com/>



Roller - Grooved Repairable Steel

R500638



R302-5

Jam
Fitting - Grease