

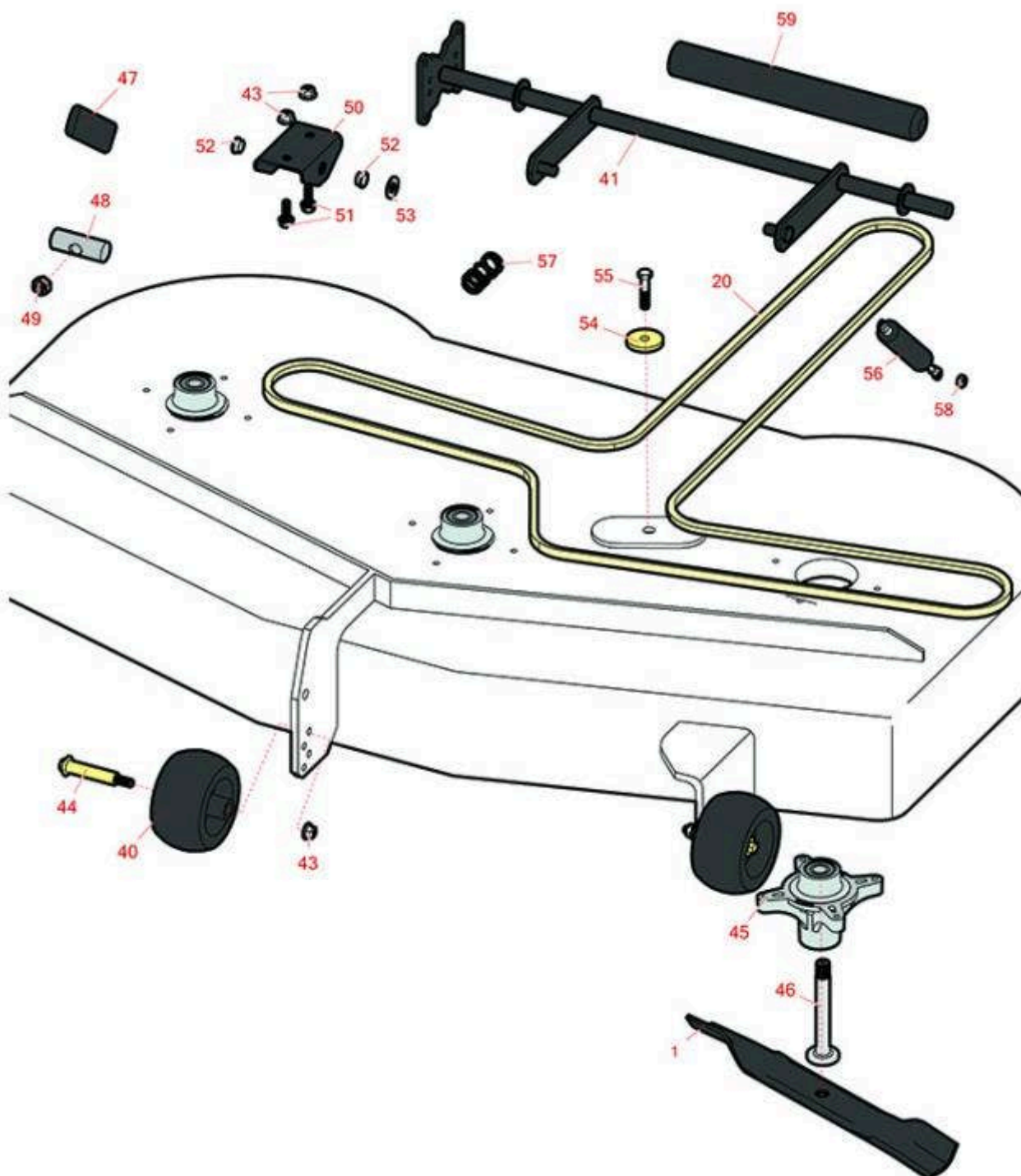


Replaces Exmark Quest Drive Series

Parts

50in Rotary Mower

50in Deck parts



All original equipment manufacturers names and part numbers are used for identification purposes only, and we are in no way implying that our products are original equipment parts. Prices subject to change without notice.



Replaces Exmark Quest Drive Series Parts

50in Rotary Mower
50in Deck parts



Item No	R&R Part No.	OEM Part No.	Description	Qty Req	Order Quantity
Blades					
1	R115-5059-03	115-5059-03	Mower Blade - High Lift 17.5 in	3	
Belts					
20	R119-8820	119-8820	Belt	1	
Other Parts Available					
40	R68-2730	1-603299	Wheel - Anti Scalp	3	
41	R132-6878-03	132-6878-03	Lift - Deck, Wide	1	
43	R104-8301	104-8301, 109-6658	Locknut - 3/8-16 Nylon Flanged	9	
44	R112-3977	112-3977	Bolt- Shoulder	3	
45	R139-3214	121-0751, 121-9107	Spindle Assy	3	
46	R117-7268	117-7268	Shaft- Spindle	3	
47	R1-633268	1-633268	Grip - Lever - Foam	1	
48	R119-8810	119-8810	Pivot Pin	1	
49	R3296-19	3296-19	Locknut - 1/2-20	1	
50	R120-2294-03	120-2294-03	Bracket-Footlift	1	
51	R3234-42	3234-42	Bolt - 3/8-16 x 1 Hx HD Fl	2	
52	R256-156	256-156	Bushing - Flanged	2	
53	R3256-26	3256-26	Washer - 1/2 in	6	
54	R110-9981	110-9981	Washer-Plain	1	
55	R323-9	323-9	Bolt - Hex HD 3/8-16 x 1-3/4	4	
56	R131-0964	131-0964	Damper	2	

All original equipment manufacturers names and part numbers are used for identification purposes only, and we are in no way implying that our products are original equipment parts. Prices subject to change without notice.



Replaces Exmark Quest Drive Series Parts

*50in Rotary Mower
50in Deck parts*



Item No	R&R Part No.	OEM Part No.	Description	Qty Req	Order Quantity
57	R119-8876	119-8876	Spring - Return	2	
58	R301504	3296-42	Locknut - ESNA 1/4-20	4	
59	R121-0726	121-0726	Grip - Foam	2	

All original equipment manufacturers names and part numbers are used for identification purposes only, and we are in no way implying that our products are original equipment parts. Prices subject to change without notice.