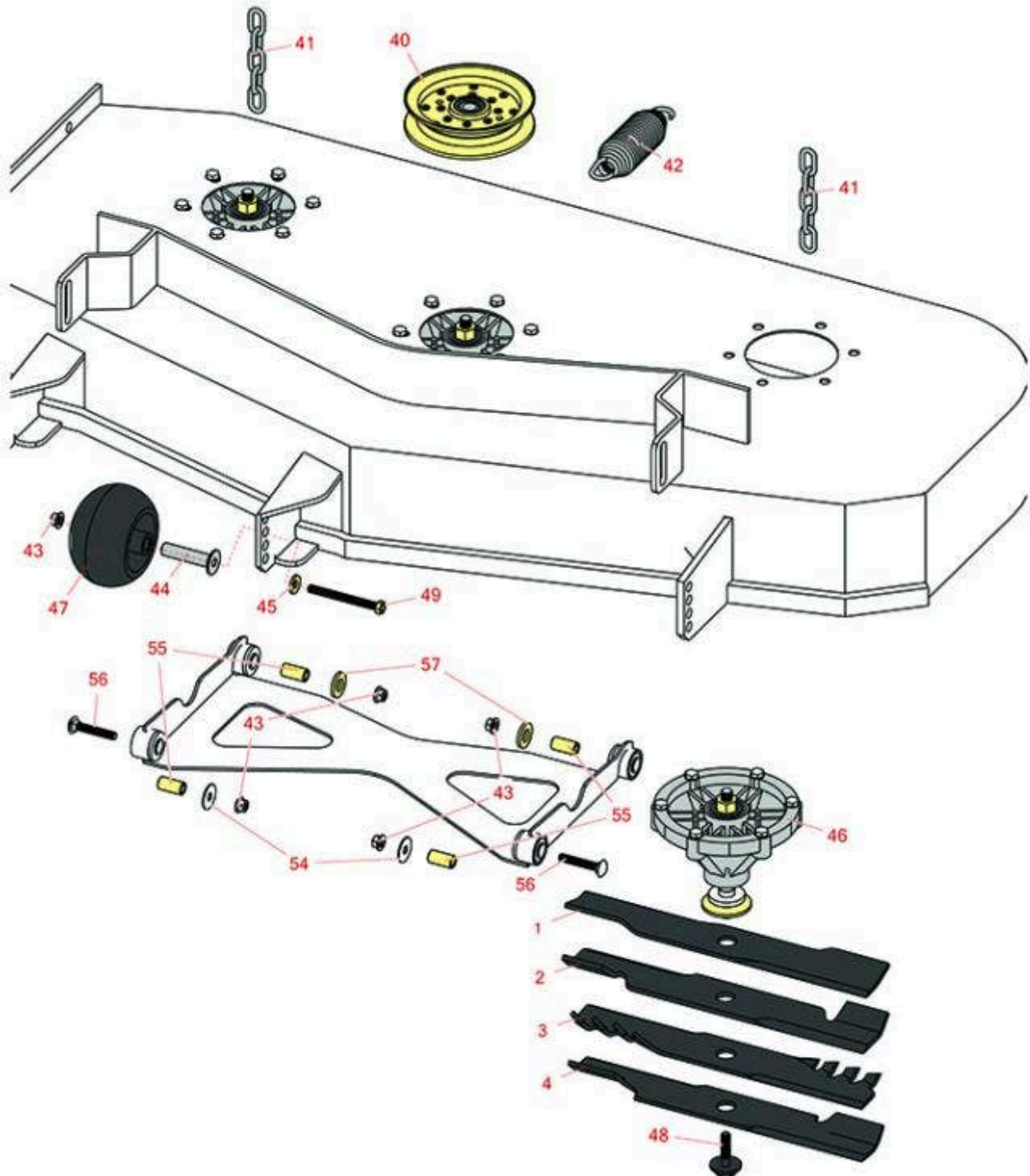




Replaces Exmark Radius S-Series Parts

48in Rotary Mower - Model RAS708GEM483C3

48in Deck Parts



All original equipment manufacturers names and part numbers are used for identification purposes only, and we are in no way implying that our products are original equipment parts. Prices subject to change without notice.



Replaces Exmark Radius S-Series Parts

48in Rotary Mower - Model RAS708GEM483C3

48in Deck Parts



Item No	R&R Part No.	OEM Part No.	Description	Qty Req	Order Quantity
Rotary Blades					
1	R103-6386	103-6386	Mower Blade - 16-1/4 Low Lift	3	
2	R103-6401	103-6401	Mower Blade- Notched 16 1/4	3	
3	RRB4062-1601	116-5177, 116-5177-S	Mower Blade - Mulcher 16.25 x 2.5in x 15/16 Mt Hole	3	
4	RRB3062-1601	103-6401, 103-6401-S	Mower Blade - High-Lift 16.25 x 2.5in x 15/16 Mt Hole	3	
Other Parts Available					
40	R126-9196	126-9196	Idler Pulley - Flat	1	
41	R1-633447	1-633447	Chain - Deck Lift	4	
42	R116-6317	116-0133, 116-6317	Spring - Extension	1	
43	R104-8301	104-8301, 109-6658	Locknut - 3/8-16 Nylon Flanged	16	
44	R116-8131	116-8131	Axle - Roller	3	
45	R98-5975	98-5975	Washer - Belleville	3	
46	R126-4630	126-4630	Spindle Housing Assy	3	
47	R103-8415	103-8415	Roller - Anti Scalp	3	
48	R116-0005	116-0005	Bolt- Blade, - Sems 7/16-20	3	
49	R116-9362	116-9362	Bolt - Hex HD 3/8-16 x 3 3/4 GR8 YZ	3	
54	R2844	2844	Washer	2	
55	R108-6544	108-6544	Spacer	4	
56	R3231-7	3231-7	Bolt - Carriage 3/8-16 x 2-1/4	4	
57	R1-373034	1-373034	Washer - 7/16 HD	2	

All original equipment manufacturers names and part numbers are used for identification purposes only, and we are in no way implying that our products are original equipment parts. Prices subject to change without notice.



Replaces Exmark Radius S-Series Parts

48in Rotary Mower - Model RAS708GEM483C3

48in Deck Parts



All original equipment manufacturers names and part numbers are used for identification purposes only, and we are in no way implying that our products are original equipment parts. Prices subject to change without notice.