

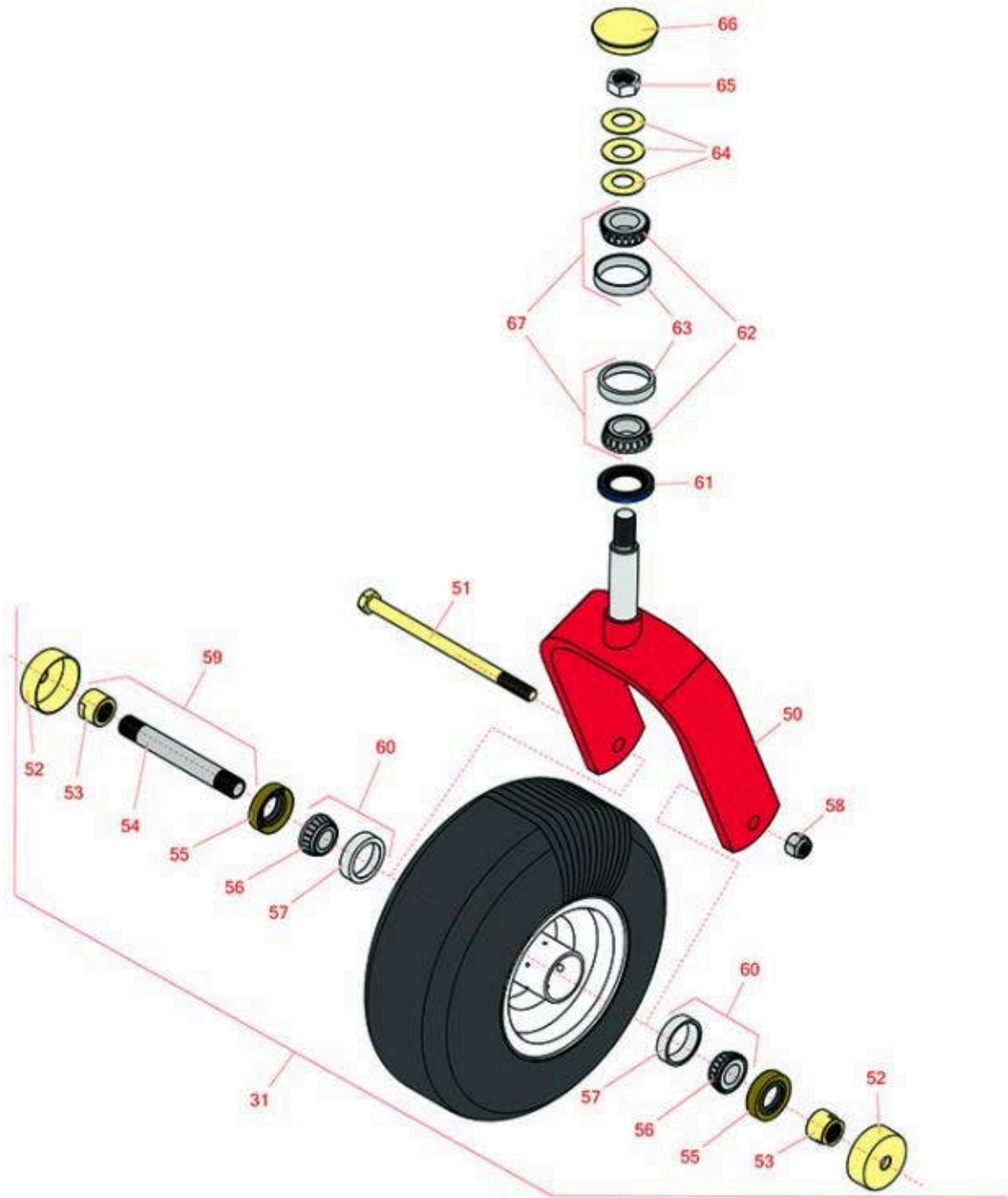


# Replaces Exmark Lazer Z X-Series Parts

Zero Turn Mower with 52in Deck - Models LZX740EKC526T0,

LZX740EKC526W0

Caster Wheel



All original equipment manufacturers names and part numbers are used for identification purposes only, and we are in no way implying that our products are original equipment parts. Prices subject to change without notice.



# Replaces Exmark Lazer Z X-Series Parts

Zero Turn Mower with 52in Deck - Models LZX740EKC526T0,

LZX740EKC526W0

Caster Wheel



Item No	R&R Part No.	OEM Part No.	Description	Qty Req	Order Quantity
<b>Tires</b>					
31	<b>R109-9126</b>	109-9126	Tire & Wheel - 13x5.00-6 - White	2	
<b>Other parts Available</b>					
50	<b>R116-6703-01</b>	116-6703-01	Caster Fork	2	
51	<b>R325-42</b>	325-42	Bolt - 1/2-13 x 8 Hex Head Gr 5	2	
52	<b>R103-2768</b>	103-2768	Guard - Seal	4	
53	<b>R103-3051</b>	103-3051	Spacer - Nut - Hardened	4	
54	<b>R103-3155</b>	103-3155	Axle - Caster	2	
55	<b>R103-0063</b>	103-0063	Seal - Grease	4	
56	<b>R254-78</b>	1-633585	Tapered Bearing Cone	4	
57	<b>R254-79</b>	1-633584, R & R ONLY	Cup - Bearing	4	
<i>Tech Note: Use R254-79M installation mandrel to properly install race.:</i>					
58	<b>RF5003</b>	3296-23	Locknut - ESNA 1/2-13	2	
59	<b>R126-5360</b>	126-5360	Axle- Caster w/Spacer Nut	2	
60	<b>R500534</b>	1-633585, R & R ONLY	Bearing - with Cup	4	
61	<b>R116-5647</b>	116-5647, R & R ONLY	Seal - Grease	2	
62	<b>R254-94</b>	1-543509	Tapered Bearing Cone	4	
63	<b>R254-72</b>	1-543508	Cup - Bearing	4	
64	<b>R1-633508</b>	1-633508	Washer - Spring Disc	6	
65	<b>R3296-51</b>	3296-51	Nut - Nylon Lock 3/4-10 Gr 8	2	

All original equipment manufacturers names and part numbers are used for identification purposes only, and we are in no way implying that our products are original equipment parts. Prices subject to change without notice.



## Replaces Exmark Lazer Z X-Series Parts

Zero Turn Mower with 52in Deck - Models LZX740EKC526T0,

LZX740EKC526W0

Caster Wheel



Item No	R&R Part No.	OEM Part No.	Description	Qty Req	Order Quantity
66	<b>R103-4882</b>	103-4882	Grease Cap - Castor	2	
67	<b>R500596</b>	R & R ONLY	Tapered Bearing Set - Cup and Cone	4	

All original equipment manufacturers names and part numbers are used for identification purposes only, and we are in no way implying that our products are original equipment parts. Prices subject to change without notice.