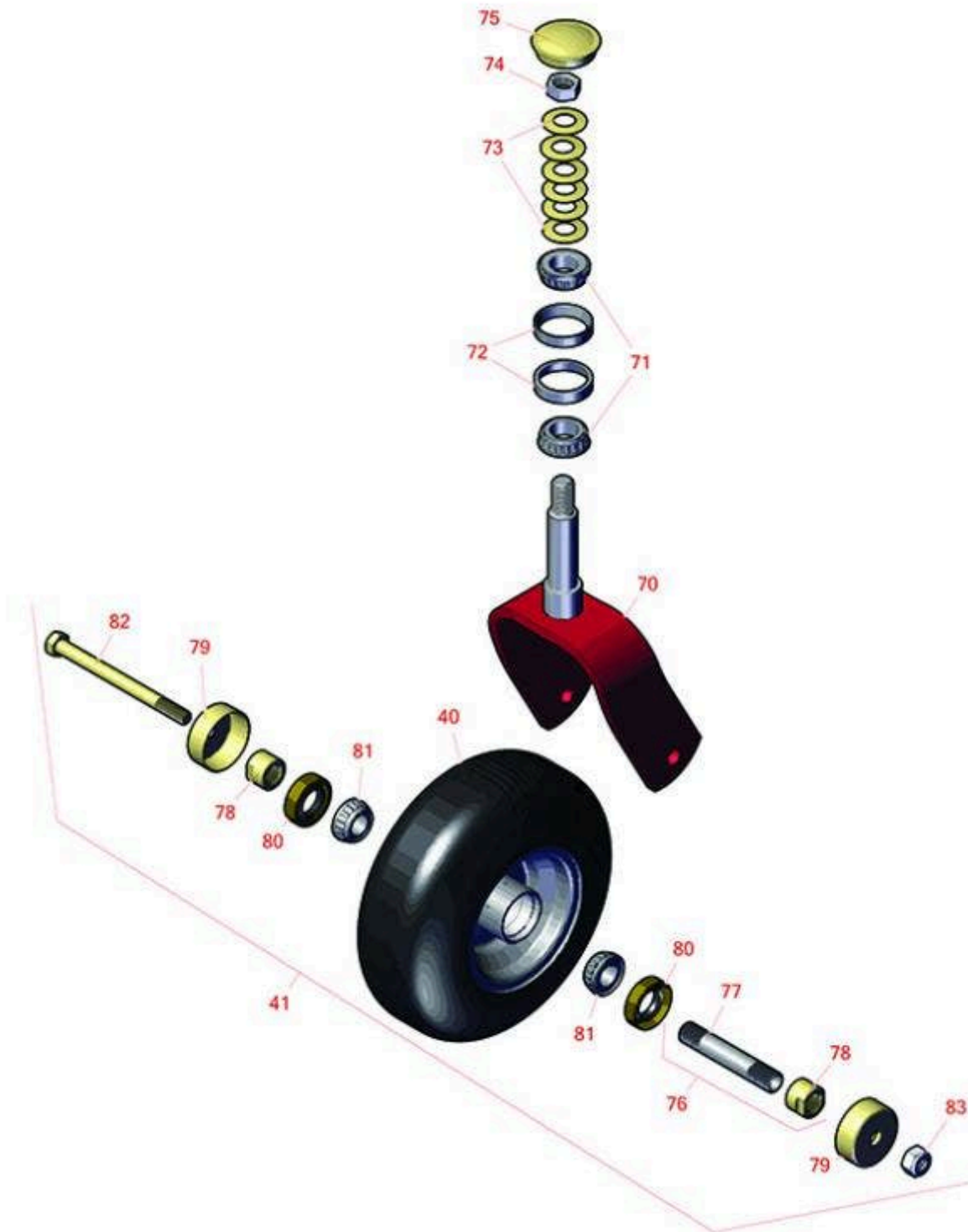




Replaces Toro GrandStand Mower Parts

Mower with 52in Deck - Models 74505
Caster Wheel



All original equipment manufacturers names and part numbers are used for identification purposes only, and we are in no way implying that our products are original equipment parts. Prices subject to change without notice.



Replaces Toro GrandStand Mower Parts

Mower with 52in Deck - Models 74505

Caster Wheel



Item No	R&R Part No.	OEM Part No.	Description	Qty Req	Order Quantity
---------	--------------	--------------	-------------	---------	----------------

Tires

40	R130-4563	110-9965, 130-4563	Wheel and Tire Assy	2	
41	R130-4558	112-3810, 112-8310, 130-4558	Wheel-Tire and Bearing Assy	2	

Other Parts Available

70	R121-7988-01	121-7988-01	Fork - Caster	2	
71	R254-94	1-543509, 254-94, 32-8090, 32-8240, 32-9640, 40440, 62-3330	Tapered Bearing Cone	4	
72	R254-72	01-103-0050, 01-103-0120, 01-103-0140, 1-543508, 254-71, 254-72, 40439, 62-3340, 99-4511	Cup - Bearing	4	
73	R1-633508	1-633508	Washer - Spring Disc	12	
74	R3296-51	3296-51, 3296-81	Nut - Nylon Lock 3/4-10 Gr 8	2	
75	R103-4882	103-4882	Grease Cap - Castor	2	
76	R126-5359	126-5359	Caster Axle Assy w/Bushing	2	
77	R103-3157	103-3157	Axle - Caster Wheel	2	
78	R103-3051	103-3051	Spacer - Nut - Hardened	4	
79	R103-2768	103-2768	Guard - Seal	4	

All original equipment manufacturers names and part numbers are used for identification purposes only, and we are in no way implying that our products are original equipment parts. Prices subject to change without notice.



Replaces Toro GrandStand Mower Parts

Mower with 52in Deck - Models 74505

Caster Wheel



Item No	R&R Part No.	OEM Part No.	Description	Qty Req	Order Quantity
80	R103-0063	103-0063	Seal - Grease	4	
81	R254-78	01-102-0060, 01-102-0130, 1-633585, 254-78, 32-7790, 32-9580, 93-4813	Tapered Bearing Cone	4	
82	R325-20	01-150-1250, 01-178-0848, 325-20	Bolt - Hx HD 1/2-13 x 6	2	
83	R3296-25	30-3380, 32127-21, 32127-31, 3290-160, 3290-33, 3296-13, 3296-25, 3296-45, 329645	Locknut - 1/2-13 Heavy ESNA	2	

All original equipment manufacturers names and part numbers are used for identification purposes only, and we are in no way implying that our products are original equipment parts. Prices subject to change without notice.