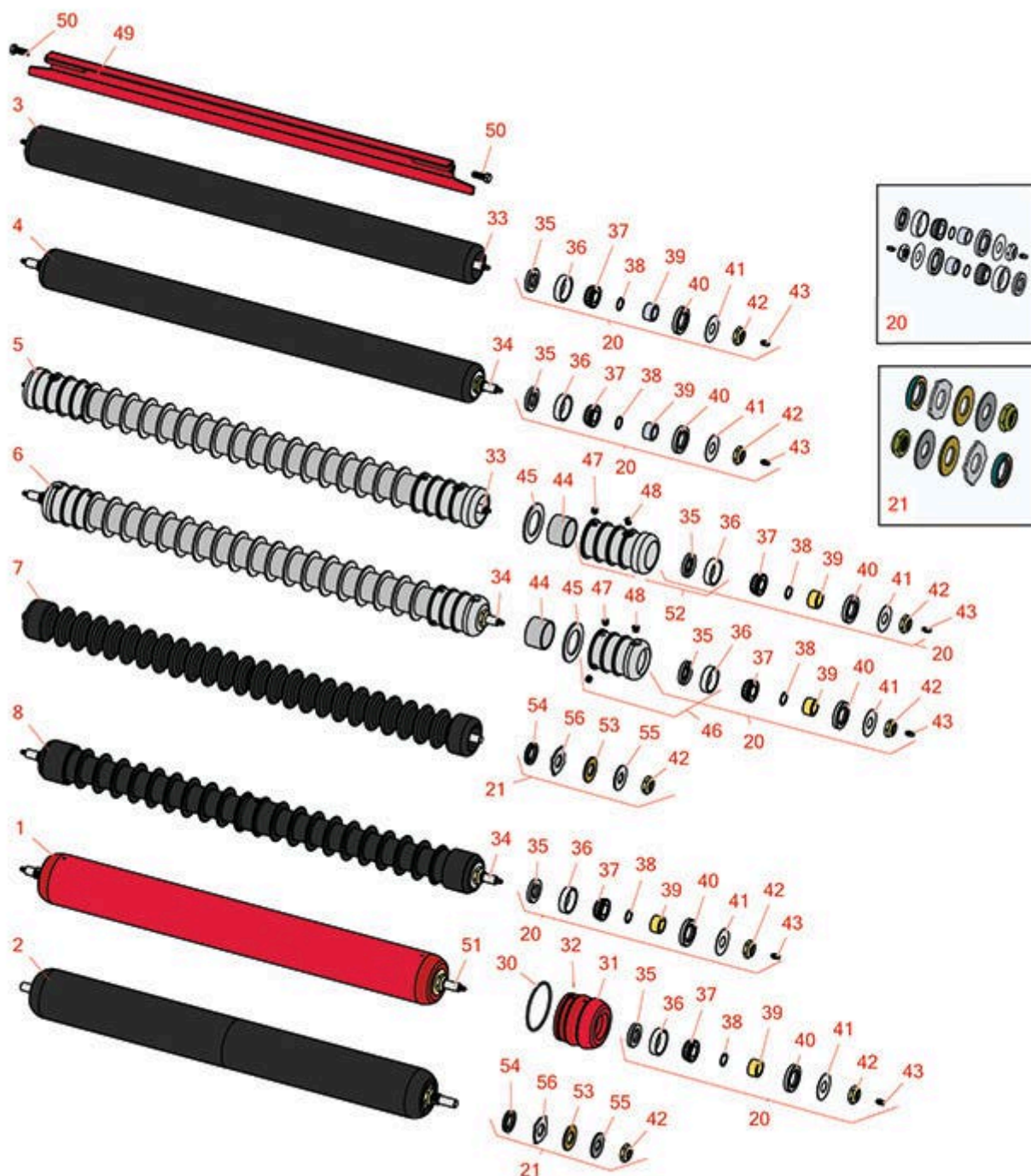




# Replaces Toro Reelmaster 3500-D Parts

Cutting Unit  
Rollers



All original equipment manufacturers names and part numbers are used for identification purposes only, and we are in no way implying that our products are original equipment parts. Prices subject to change without notice.



# Replaces Toro Reelmaster 3500-D Parts

Cutting Unit  
Rollers



Item No	R&R Part No.	OEM Part No.	Description	Qty Req	Order Quantity
---------	--------------	--------------	-------------	---------	----------------

## R&R Front Rollers

3	<b>R62-6200</b>	59-6100, 62-6200	Roller - Smooth Tubular Steel	0	
---	-----------------	---------------------	-------------------------------	---	--

*Detail Description: Constructed with a 34" body length and a through shaft, this heavy duty roller uses greasable tapered bearings for extended life.:*

4	<b>R84-6180</b>	84-6180	Roller - Smooth Tubular Steel	0	
---	-----------------	---------	-------------------------------	---	--

*Detail Description: Constructed with a 33" body length and a through shaft, this heavy duty roller uses greasable tapered bearings for extended life.:*

5	<b>R62-6130R</b>		Roller - Grooved Repairable Steel	0	
---	------------------	--	-----------------------------------	---	--

*Detail Description: Constructed with a 34" body length, a 35" through shaft and tapered bearings for extended life. This roller can be repaired by unscrewing the ends and replacing the series of washers and spacers.:*

6	<b>R150715</b>		Roller - Grooved Repairable Steel	0	
---	----------------	--	-----------------------------------	---	--

*Detail Description: Constructed with a 33" body length, a 36" through shaft and tapered bearings for extended life. This roller can be repaired by unscrewing the ends and replacing the series of washers and spacers.:*

7	<b>R1503750</b>		Roller - Grooved UHMW Polyethylene	0	
---	-----------------	--	------------------------------------	---	--

*Detail Description: This roller fits the 450D with a 35" shaft only. Machined from solid UHMW, this low maintenance roller rotates around a 1" solid stainless steel shaft and requires no bearings or grease. Patented groove design and smooth UHMW material prevents build-up of debris. Shaft length measures 35":*

8	<b>R84-6080</b>	84-6080	Roller - Grooved Cast Iron	0	
---	-----------------	---------	----------------------------	---	--

*Detail Description: This heavy duty cast iron roller with a 33" body length, a 36" shaft uses greasable tapered bearings for extended life.:*

## R&R Rear Rollers

1	<b>R59-5630</b>	59-5630	Roller - Smooth Tubular Steel	0	
---	-----------------	---------	-------------------------------	---	--

*Detail Description: Constructed with a through shaft, this heavy duty roller uses greasable tapered bearings for extended life.:*

All original equipment manufacturers names and part numbers are used for identification purposes only, and we are in no way implying that our products are original equipment parts. Prices subject to change without notice.



# Replaces Toro Reelmaster 3500-D Parts

Cutting Unit  
Rollers



Item No	R&R Part No.	OEM Part No.	Description	Qty Req	Order Quantity
2	R1503800		Roller - Smooth UHMW Polyethylene	0	

*Detail Description: Machined from solid UHMW, this low maintenance roller uses a 1" solid stainless steel shaft and requires no grease. UHMW material prevents build-up of debris.:*

## Overhaul Kits

20	R100160		Overhaul Kit - Roller	1	
----	---------	--	-----------------------	---	--

*Detail Description: Includes 2 ea.: R150504 Washers, R237-54 O-rings, R253-117 Seals, R253-122 Seals, R254-78 Bearing, R254-79 Bearing Cups, R302-5 Grease Fittings, R3296-15 Locknuts, & R59-5690 Wear Sleeves:*

21	R101399		Overhaul Kit - UHMW 2 Pc Roller	1	
----	---------	--	---------------------------------	---	--

*Detail Description: Fits all R&R 2-1/2" - 3-1/2" Dia. Black UHMW Plastic Rollers that do not use ball bearings.. Includes 2 ea.: R1503230 Star Washers, R1503470 Seals, R150333 Thrust Washers, R3296-15 Locknuts, R1503471 Bronze Thrust Washers:*

## Other Parts Available

30	R150501		O-Ring - Roller End	2	
----	---------	--	---------------------	---	--

31	R150502		Roller End - Rear	2	
----	---------	--	-------------------	---	--

32	R150503		Pin - Drive Roller End	0	
----	---------	--	------------------------	---	--

33	R62-6040	62-6040	Shaft - 35 Roller	1	
----	----------	---------	-------------------	---	--

34	R84-6070	84-6070	Shaft - 36 Roller	1	
----	----------	---------	-------------------	---	--

35	R253-122	253-122, 30-0640	Seal	2	
----	----------	---------------------	------	---	--

36	R254-79	01-103-0060, 01-103-0130, 1-633584, 252-106, 254-79, 32-7800, 32-9590	Cup - Bearing	2	
----	---------	---	---------------	---	--

*Detail Description: Use R254-79M installation mandrel to properly install race.:*

All original equipment manufacturers names and part numbers are used for identification purposes only, and we are in no way implying that our products are original equipment parts. Prices subject to change without notice.



# Replaces Toro Reelmaster 3500-D Parts

Cutting Unit  
Rollers



Item No	R&R Part No.	OEM Part No.	Description	Qty Req	Order Quantity
37	R254-78	01-102-0060, 01-102-0130, 1-633585, 254-78, 32-7790, 32-9580, 93-4813	Tapered Bearing Cone	2	
38	R237-54	237-35, 237-46, 237-54, 253-35, 353-308	O-Ring - Small	2	
39	R59-5690	59-5690	Sleeve - Wear	2	
40	R253-117	253-117, 253-165	Seal - Outer Triple Lip	2	
41	R150504	66-5620	Washer	2	
42	R3296-15	116-7306, 32118-5, 32127-23, 32127-47, 3296-15	Locknut - 3/4-16 Nylon Jam	2	
43	R302-5	21-6010, 302-11, 302-37, 302-47, 302-5, 302-57, 302-58, 302-6, 31-0300, 32-9660, 60-0800, 62-3880, 92-4181	Fitting - Grease	0	
44	R150676		Spacer - 2-3/4 Dia x 1-1/4 L	0	
45	R150672		Washer - 2-3/4 Roller	0	
46	R150718		Roller End - 2-3/4 Threaded	2	

All original equipment manufacturers names and part numbers are used for identification purposes only, and we are in no way implying that our products are original equipment parts. Prices subject to change without notice.



## Replaces Toro Reelmaster 3500-D Parts

*Cutting Unit  
Rollers*



Item No	R&R Part No.	OEM Part No.	Description	Qty Req	Order Quantity
47	<b>R150691</b>	150691	Screw - Set Nyloc 3/8-16 x 3/8	4	
48	<b>R170714</b>	302-34, 302-39, 62-3520	Fitting - Pressure Relief	2	
49	<b>R62-6220</b>	62-6220	Scraper - Front Solid Roller	1	
50	<b>R3234-11</b>	3234-11	Bolt - Hex Washer HD	2	
51	<b>R59-5670</b>	59-5670	Shaft - Rear Roller	1	
52	<b>R150687</b>		Roller End - Threaded	2	
53	<b>R1503471</b>		Washer - Thrust SAE660 Bronze	2	
54	<b>R1503470</b>		Seal - Inner Wiper	2	
55	<b>R150333</b>		Washer - Flat Keyed Outer SS	2	
56	<b>R1503230</b>		Washer - Thrust Outer Keyed	2	

All original equipment manufacturers names and part numbers are used for identification purposes only, and we are in no way implying that our products are original equipment parts. Prices subject to change without notice.