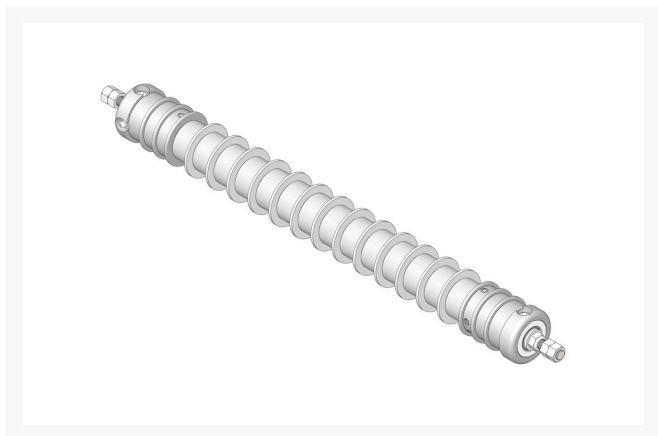




Roller - Grooved Repairable Steel

R170710R



Details

Constructed with a through shaft and greasable tapered bearings for extended life, this roller can be repaired by unscrewing the ends and replacing the series of washers and spacers.

Replaces

R&R Products	R170710
--------------	---------

Specifications

Manufacturer	R&R Products
Overhaul Kit No.	R100200
Roller Body Diameter	2.75 in
Weight	20 lb

Fits Models

Ransomes 180

Replacement Parts

R100200	Overhaul Kit - Roller
R500534	Bearing - with Cup
R170713	Shaft - Heavy Duty RR Roller
R150672	Washer - 2-3/4 Roller
R150676	Spacer - 2-3/4 Dia x 1-1/4 L
R150691	Screw - Set Nyloc 3/8-16 x 3/8
R150670	Roller End - 2-3/4 Threaded
R170714	Fitting - Pressure Relief
R302-5	Fitting - Grease
R253-122	Seal

Baber Turf Equipment Co.

Unit 6 / 10 Firth Street Auckland, 2113
09 294 6040

<https://baber.rrproducts.com/>



Roller - Grooved Repairable Steel

R170710R



R254-79	Cup - Bearing
R254-78	Tapered Bearing Cone
R253-117	Seal - Outer Triple Lip
R150674	Sleeve - Wear 3/4 Plated
R170716	Locknut - 1/2-13 Flanged
R443818	Nut - 1/2-13 Hex Jam Zinc