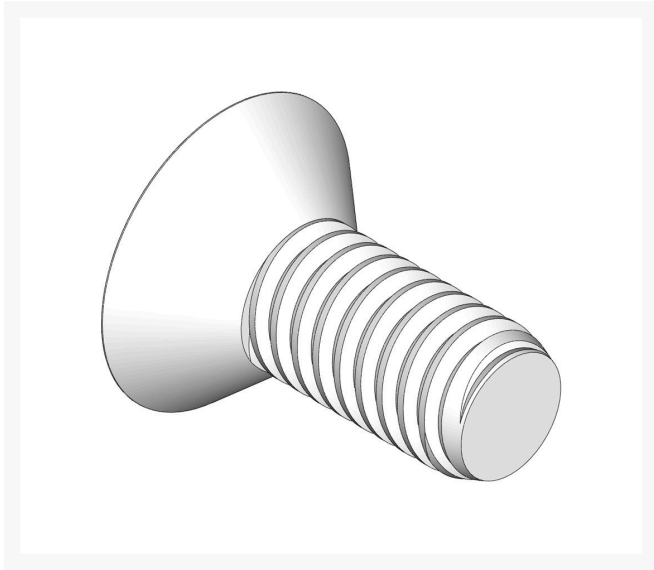




Screw - Bedknife M8-1.25 x 20

R19M7573



Replaces

John Deere 19M7573

Specifications

Manufacturer R&R Products

Fits Models

- John Deere 2500 Riding Greens Mower
- John Deere 2500A Riding Greens Mower
- John Deere 2500B Riding Greens Mower
- John Deere 2500E Riding Greens Mower
- John Deere 2500E Hybrid Riding Greens Mower
- John Deere 2653 Reel Mower
- John Deere 2653A Reel Mower
- John Deere 2653B Reel Mower
- John Deere 3215 Reel Mower
- John Deere 3215A Reel Mower
- John Deere 3215B Reel Mower
- John Deere 3225B Reel Mower
- John Deere 3225C Reel Mower
- John Deere 3235 Reel Mower
- John Deere 3235A Reel Mower
- John Deere 3235B Reel Mower
- John Deere 3235C Reel Mower
- John Deere 7200 Reel Mower
- John Deere 7200A Reel Mower
- John Deere 7400A Rotary Mower
- John Deere 7500 Reel Mower
- John Deere 7500A Reel Mower
- John Deere 7500A E-Cut Hybrid Reel Mower
- John Deere 7700 Reel Mower
- John Deere 7700A Reel Mower
- John Deere 8000A E-Cut Hybrid Reel Mower
- John Deere 8500 Reel Mower
- John Deere 8700 Reel Mower
- John Deere 8700A Reel Mower

Baber Turf Equipment Co.

Unit 6 / 10 Firth Street Auckland, 2113

09 294 6040

<https://baber.rrproducts.com/>



Screw - Bedknife M8-1.25 x 20

R19M7573



John Deere 8800 Rotary Mower
John Deere 8800A Rotary Mower
John Deere 2700 Riding Greens Mower
John Deere 2750 E-Cut Riding Greens Mower
John Deere 6080A Reel Mower
John Deere 6500A Reel Mower
John Deere 6700A Reel Mower
John Deere 6080A E-Cut Hybrid Reel Mower
John Deere 2700 E-Cut Riding Greens Mower
John Deere 3245C Rotary Mower
John Deere 8900A Reel Mower

Baber Turf Equipment Co.

Unit 6 / 10 Firth Street Auckland, 2113
09 294 6040

<https://baber.rrproducts.com/>