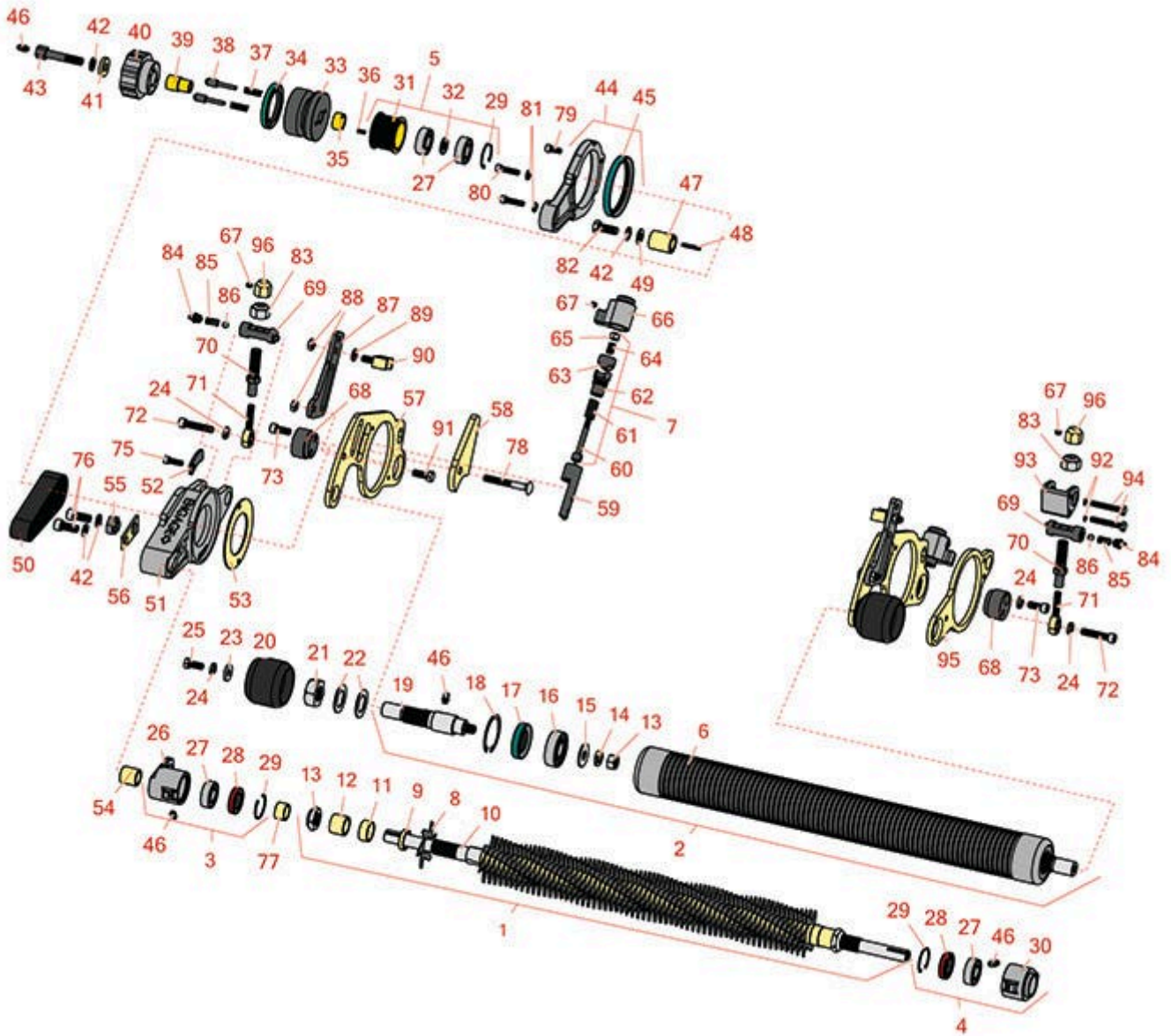




# Replaces Jacobsen GP400 Parts

Cutting Unit  
Groomer



All original equipment manufacturers names and part numbers are used for identification purposes only, and we are in no way implying that our products are original equipment parts. Prices subject to change without notice.



# Replaces Jacobsen GP400 Parts



Cutting Unit

Groomer

OEM

Item R&R  
No Part No.

Part No. Description

Qty  
Req

Order  
Quantity

1	<b>R132215</b>	132215	Cutter Blade Assy - 22 in	1
2	<b>R100115</b>		Groomer Roller - 22 in	1
<i>Tech Note: Note: 2 1/2 in Dia w/1/4 Spacing:</i>				
3	<b>R132210</b>	132210	Bearing Housing Assy	1
4	<b>R132211</b>	132211	Bearing Housing Assy	1
5	<b>R132212</b>	132212	Pulley Assy - Incl Bearing	1
6	<b>R390899</b>	390899	Roller Tube - Grooved 2.5 x 22 - 1/4 in Spacing	1
<i>Tech Note: Note: W/ 1/4 Spacing:</i>				
6	<b>R390900</b>	390900	Roller - Grooved 2-1/2 x 22	1
<i>Tech Note: Note: w/ 1/2 Spacing:</i>				
7	<b>R163761</b>	163761	Knob - Quick Hgt Adj	1
8	<b>R365230</b>	365230	Verti-Cut Blade - 2-1/2 Dia.	71
9	<b>R365236</b>	365236	Spacer - 1 1/16 x .247	70
10	<b>R390857</b>	390857	Shaft - Fits 22 Groomer	1
11	<b>R365234</b>	365234	Spacer - 1 1/16 x .467	2
12	<b>R367161</b>	367161	Spacer - 1 OD x .75	2
13	<b>R3296-15</b>	3296-15, 367029, 444742	Locknut - 3/4-16 Nylon Jam	2
14	<b>R446146</b>	446146, 446148	Lock Washer - 7/16	2
15	<b>R453013</b>	452008, 453013	Washer - Flat 7/16	2
16	<b>R365330</b>	365330	Bearing	2

All original equipment manufacturers names and part numbers are used for identification purposes only, and we are in no way implying that our products are original equipment parts. Prices subject to change without notice.



# Replaces Jacobsen GP400 Parts



Cutting Unit

Groomer

OEM

Item R&R  
No Part No.

Part No. Description

Qty  
Req

Order  
Quantity

Item R&R No	Part No.	Part No.	Description	Qty Req	Order Quantity
17	<b>R338773</b>	338773	Seal	2	
18	<b>R458113</b>	458113	Ring - Snap Fits Groomer	2	
19	<b>R338772</b>	338772	Shaft - Roller - RH	2	
20	<b>R365343</b>	365343	Wheel - Anti Scalp	2	
21	<b>R264</b>	443836	Nut - Jam Hardened 7/8-14	4	
22	<b>R365409</b>	365409	Spacer - Wheel	4	
23	<b>R364441</b>	364441, 366641	Washer - Flat 5/16x7/8	4	
24	<b>R446136</b>	446134, 446136	Washer - Lock 5/16 Zinc	2	
25	<b>R400184</b>	400184, 400194	Screw - 5/16-18 x 3/4 Hex	2	
26	<b>R241807</b>	241807	Bearing Housing	1	
27	<b>R365229</b>	365229	Bearing	1	
28	<b>R336962</b>	336962	Seal	1	
29	<b>R458461</b>	458461	Snap Ring	1	
30	<b>R241808</b>	241808	Bearing Housing	1	
31	<b>R365228</b>	365228	Drive Pulley	1	
32	<b>R365232</b>	365232	Spacer - Drive Pulley	1	
33	<b>R163776</b>	163776	Pulley Assy - Incl Seal	1	
34	<b>R338768</b>	338768	Seal - Oil	1	
35	<b>R365256</b>	365256	Spacer - Pulley .875 x .630 x .406	1	
36	<b>R365239</b>	365239	Key - 1/8 x 1/8 x 7/16	1	
37	<b>R365272</b>	365272	Spring - Clutch	2	

All original equipment manufacturers names and part numbers are used for identification purposes only, and we are in no way implying that our products are original equipment parts. Prices subject to change without notice.



# Replaces Jacobsen GP400 Parts



Cutting Unit

Groomer

OEM

Item No	R&R Part No.	OEM Part No.	Description	Qty Req	Order Quantity
38	<b>R365258</b>	365258	Pin - Clutch	2	
39	<b>R365254</b>	365254	Shaft - Stub - Clutch	1	
40	<b>R241817</b>	241817	Knob - Clutch	1	
41	<b>R363841</b>	363841	Washer - Groomer Clutch	1	
42	<b>R3254-6</b>	3254-6, 446140, 446142	Washer - Lock 3/8	3	
43	<b>R365257</b>	365257	Bolt - Special Groomer Clutch	1	
44	<b>R132214</b>	132214	Cover and Seal Assy	1	
45	<b>R338752</b>	338752	Seal	1	
46	<b>R302-5</b>	302-5, 471214, 471223, 471226	Fitting - Grease	6	
47	<b>R365227</b>	365227	Pulley - 16 Grooved	1	
48	<b>R345556</b>	345556	Key - Sq 1/8 x 1	1	
49	<b>R453011</b>	453011	Washer - Flat 3/8 SAE Y/Zinc	1	
50	<b>R365235</b>	365235	Belt - Timing Fits 2-1/2 Groomers	1	
51	<b>R220302</b>	220302	Housing - Belt	1	
52	<b>R365341</b>	365341	Washer - Special	1	
53	<b>R365226</b>	365226	Cover Plate - Groomer	1	
54	<b>R367163</b>	367163	Spacer - .875 x .630 x .880	1	
55	<b>R367162</b>	367162	Belt Tensioner - Eccentric	1	
56	<b>R365260</b>	365260	Link - Belt Adjusting	1	
57	<b>R4103100</b>	3010708	Bracket - Groomer Roller	2	

All original equipment manufacturers names and part numbers are used for identification purposes only, and we are in no way implying that our products are original equipment parts. Prices subject to change without notice.



# Replaces Jacobsen GP400 Parts



Cutting Unit

Groomer

OEM

Item R&R  
No Part No.

Part No. Description

Qty  
Req

Order  
Quantity

Item No	R&R Part No.	OEM Part No.	Description	Qty Req	Order Quantity
58	<b>R365237</b>	365237	Spacer - Grass Catcher	1	
59	<b>R365265</b>	365265	Adj. Link - Fits Groomer	1	
60	<b>R365271</b>	365271	Bolt	1	
61	<b>R365269</b>	365269	Spring - Stainless - Knob Assy	1	
62	<b>R365266</b>	365266	Bolt - Groomer Adjusting	1	
63	<b>R365267</b>	365267	Plunger - Fits Groomer	1	
64	<b>R365268</b>	365268	Spring - Stainless - Knob Assy	1	
65	<b>R32152-4</b>	32152-4, 444708	Locknut - 1/4-20 All Metal	2	
66	<b>R271919</b>	271919	Knob - Fits Groomer	1	
67	<b>R422502</b>	422502	Set Screw - 1/4-20 x 1/4 Nyloc	4	
68	<b>R367166</b>	367166	Cam - Fits Groomer Adj Assy	1	
69	<b>R3003401</b>	3003401, 3003969	Pin - Fits Groomer	2	
70	<b>R365270</b>	365270	Bolt - Groomer Adjusting	1	
71	<b>R365247</b>	365247	Rod End	2	
72	<b>R434032</b>	434032	Screw - Soc HD 5/16-18 x 1-3/4	2	
73	<b>R434024</b>	434024	Bolt - Soc HD Cap 5/16-18 x 3/4	2	
75	<b>R434031</b>	434031	Bolt - Soc HD Cap 1/4-20 x 3/4 Nyloc	2	
76	<b>R434030</b>	434030	Bolt - Soc HD Cap 3/8-16 x 7/8	2	
77	<b>R367165</b>	367165	Spacer - .875 OD x .630 ID x .532	2	
78	<b>RP17609-2</b>	441672	Bolt - Carriage 5/16-18 x 1-1/2	1	
79	<b>R434011</b>	434011	Bolt - Soc HD Cap 1/4-20 x 5/8	1	

All original equipment manufacturers names and part numbers are used for identification purposes only, and we are in no way implying that our products are original equipment parts. Prices subject to change without notice.



# Replaces Jacobsen GP400 Parts

Cutting Unit

Groomer

OEM



Item No	R&R Part No.	OEM Part No.	Description	Qty Req	Order Quantity
80	<b>R316796</b>	316796, 434029	Bolt - Allen HD 1/4-20 x 1	2	
81	<b>R3253-3</b>	3253-3, 446128, 446130	Washer - Lock 1/4	2	
82	<b>R400298</b>	400298	Bolt - Hex HD 3/8-24 x 1	2	
83	<b>R444816</b>	444816, 445667	Nut - 1/2-20 ESNA	2	
84	<b>R471219</b>	366852, 471219	Zerk - Grease	1	
85	<b>R365291</b>	365291	Spring - Fits Groomer Pin Assy	2	
86	<b>R465006</b>	465006	Steel Ball - 5/16	2	
87	<b>R365233</b>	365233	Link - Roller Adjusting	2	
88	<b>R32152-1</b>	444716	Locknut - All Metal 5/16-18	4	
89	<b>R453009</b>	3256-23, 452004, 452006, 452008, 453009	Washer - Flat 5/16 SAE	2	
90	<b>R364061</b>	364061	Bracket	2	
91	<b>R400186</b>	400186	Bolt - Hex HD 5/16-18 x 7/8	2	
92	<b>R447212</b>	447212	Lockwasher - 1/4 Internal Tooth	4	
93	<b>R2000088</b>	2000088	Pivot Block - Fits Groomer	1	
94	<b>R400118</b>	400118	Bolt - Hex HD 1/4-20 x 1-3/4 GR5	4	
95	<b>R338748</b>	338748	Bracket	1	
96	<b>R3005108</b>	3005108	Knob - Roller Adjusting	2	

All original equipment manufacturers names and part numbers are used for identification purposes only, and we are in no way implying that our products are original equipment parts. Prices subject to change without notice.