

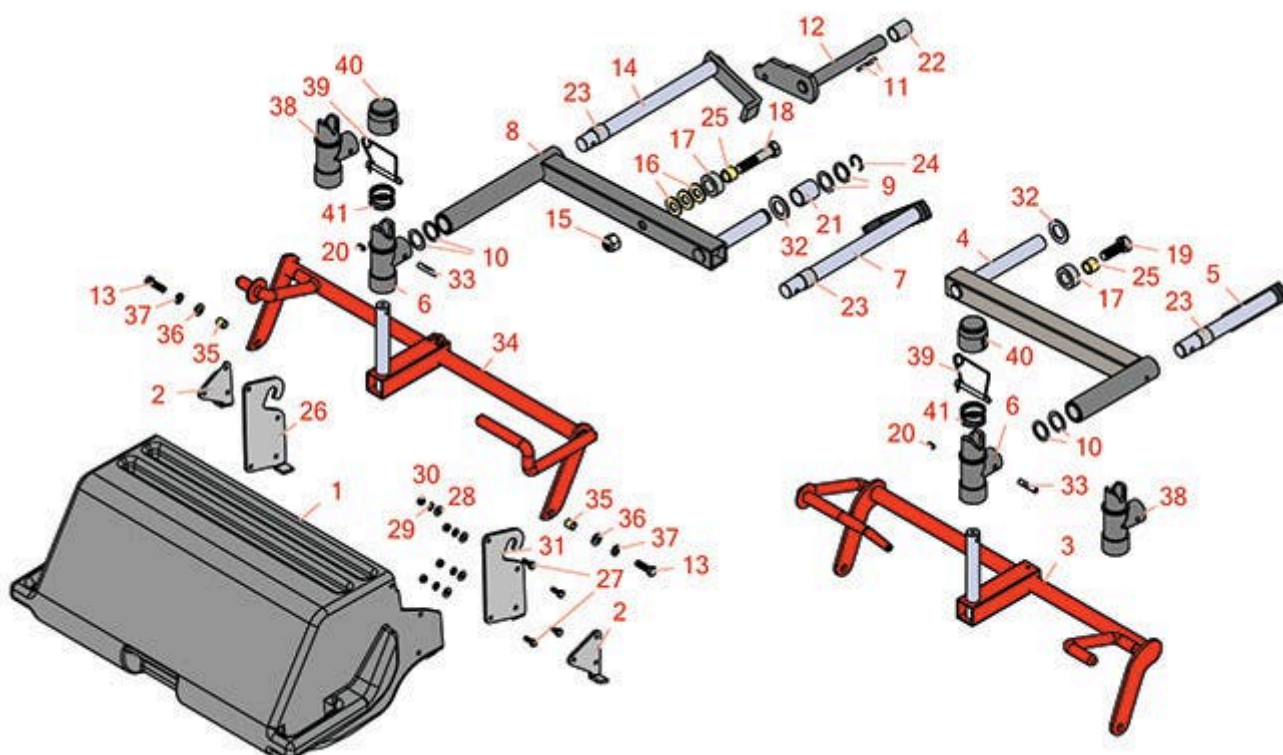


Replaces Jacobsen Greens King V & VI

Parts

Traction Unit

Grass Catcher & Lift Arm



All original equipment manufacturers names and part numbers are used for identification purposes only, and we are in no way implying that our products are original equipment parts. Prices subject to change without notice.



Replaces Jacobsen Greens King V & VI

Parts

Traction Unit

Grass Catcher & Lift Arm



Item No	R&R Part No.	OEM Part No.	Description	Qty Req	Order Quantity
1	R101530	122883, 67774, 67891	Grass Basket	3	
<i>Detail Description: Includes R101531, R101532, R321-4, R3253-3, R443102 & R453023. Due to excessive air freight charges, this item will be shipped ground freight.
Please note: Due to excessive air freight charges, this item will be shipped ground freight.:</i>					
2	R338654	338654	Bracket - Basket Stop RH	1	
2	R338655	338655	Bracket - Basket Stop LH	1	
3	R1000362	1000362	Yoke - Rear Lift	1	
4	R1000252	1000252	Arm - Lift Assy Rear	1	
5	R1000416	1000416	Shaft - w/Lever Assy - Rear	1	
6	R2000053	2000053	Housing - Swivel	1	
7	R1000451	1000451	Shaft - w/Lever Assy - LH	1	
8	R1000459	1000459	Arm - Lift Assy Front	2	
9	R345699	345699	Washer - Hardened Lift Arm	0	
10	R303629	303629	Washer - Spacer	0	
11	R463017	463017	Key - Woodruff	4	
12	R1000328	1000328	Shaft - Cam LH	1	
12	R1000327	1000327	Shaft - Cam RH	1	
13	R400264	400264	Bolt - Hex HD 3/8-16 x 1-1/4	2	
14	R163430	1000450, 159990, 163430, 163696	Shaft - Front RH	1	
15	R3296-53	444752	Locknut - 5/8-11 ESNA Yellow	3	

All original equipment manufacturers names and part numbers are used for identification purposes only, and we are in no way implying that our products are original equipment parts. Prices subject to change without notice.



Replaces Jacobsen Greens King V & VI

Parts

Traction Unit

Grass Catcher & Lift Arm



Item No	R&R Part No.	OEM Part No.	Description	Qty Req	Order Quantity
16	R453020	453020	Washer - 5/8 SAE Flat Z	6	
17	R3000418	1004059, 3000418, 345296	Roller Bearing - Hardened Cam	3	
18	R400624	400264, 400624	Bolt - Cam 5/8-11 x 3 GR8	2	
19	R400614	400614	Bolt - Hex HD 5/8-11 x 1-3/4	1	
20	R302-5	302-5, 471214, 471223, 471226	Fitting - Grease	8	
21	R315296	315296	Bushing - Pivot Housing	4	
22	R357999	357999	Bushing - Camshaft Housing	4	
23	R365001	365001	Bushing - Lift Arm	6	
24	R458433	458433	Ring - Retaining	5	
25	R3000417	3000417, 3009234, 345295	Spacer - Hardened Cam	3	
26	R101531		Bracket - Mounting LH	1	
27	R321-4	321-4, 400108	Bolt - Hex HD 1/4-20 x 3/4	6	
28	R453023	453023	Washer - Flat 1/4	6	
29	R3253-3	3253-3, 446128, 446130	Washer - Lock 1/4	6	
30	R443102	443102	Nut - 1/4-20 Yellow Zinc	6	
31	R101532		Bracket - Mounting RH	1	
32	R367349	367349	Washer - Thrust	3	

All original equipment manufacturers names and part numbers are used for identification purposes only, and we are in no way implying that our products are original equipment parts. Prices subject to change without notice.



Replaces Jacobsen Greens King V & VI

Parts

Traction Unit

Grass Catcher & Lift Arm



Item No	R&R Part No.	OEM Part No.	Description	Qty Req	Order Quantity
33	R461336	461336	Pin - Grooved 5/16 x 1-1/2 E	3	
33	R3004975	3004975	Pin - Hardened 5/16 x 2 1/4	1	
34	R122786	122786	Yoke - Lift Assy LH	1	
<i>Detail Description: 27-1/2" INSIDE:</i>					
34	R122712	122712	Yoke - Lift Assy RH / Center	2	
<i>Detail Description: 25-1/4" Inside dimension.:</i>					
34	R122787	122787	Yoke - Lift Assy RH	1	
<i>Detail Description: 27-1/2" INSIDE:</i>					
34	R122713	122713	Yoke - Lift Assy LH	1	
<i>Detail Description: 25-1/4" Inside dimension:</i>					
35	R345510	345510	Spacer	2	
36	R453011	453011	Washer - Flat 3/8 SAE Y/Zinc	2	
37	R3254-6	3254-6, 446140, 446142	Washer - Lock 3/8	2	
38	R2000121	2000121	Housing - Swivel Quick Release	1	
39	R3005435	3000924, 3005435	Pin - Quick Release Swivel Hous.	1	
40	R3004870	3004870	Cover - Swivel Housing	1	
41	R3004063	3004063	Spring - Swivel Housing	1	

All original equipment manufacturers names and part numbers are used for identification purposes only, and we are in no way implying that our products are original equipment parts. Prices subject to change without notice.