

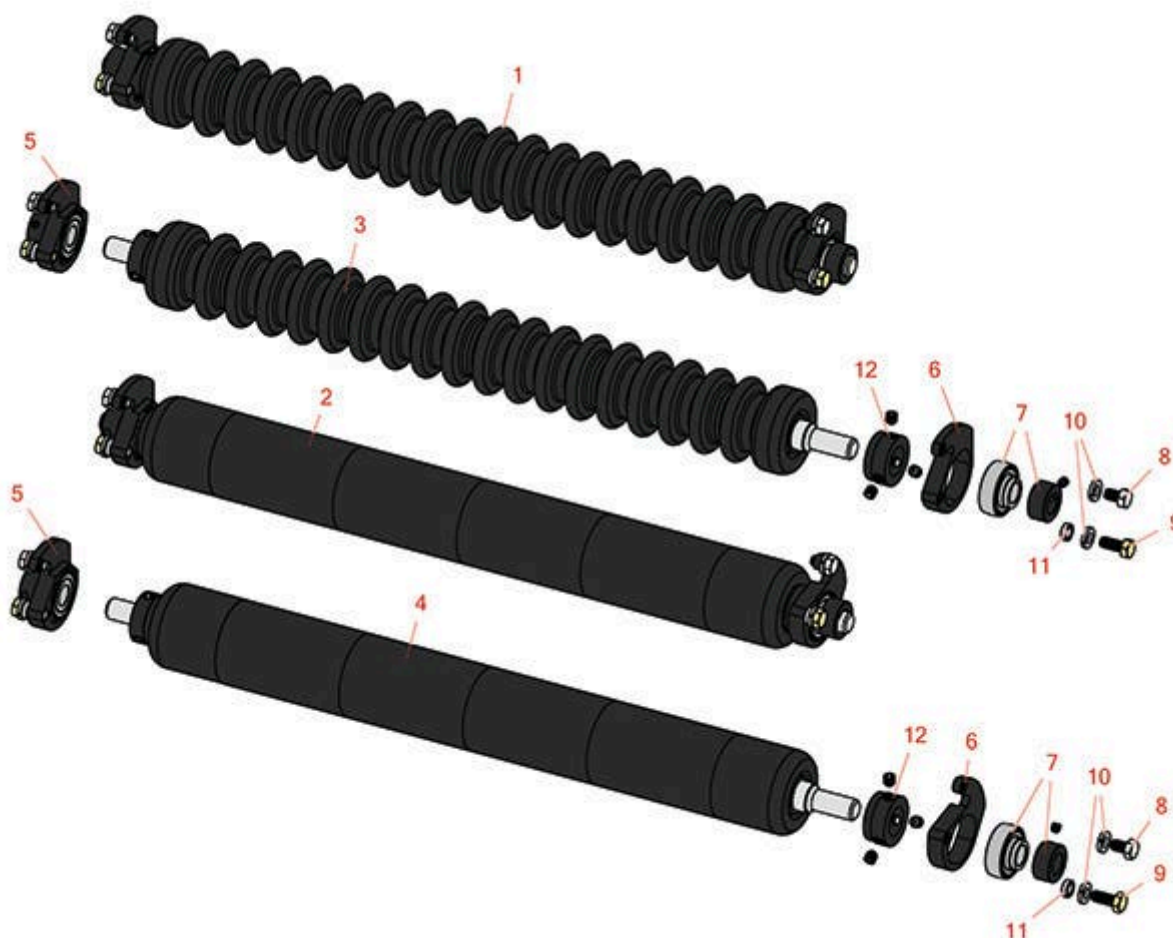


Replaces Jacobsen Greens King V & VI

Parts

Cutting Unit

Minuteman Rear Roller System



All original equipment manufacturers names and part numbers are used for identification purposes only, and we are in no way implying that our products are original equipment parts. Prices subject to change without notice.



Replaces Jacobsen Greens King V & VI

Parts

Cutting Unit

Minuteman Rear Roller System



Item No	R&R Part No.	OEM Part No.	Description	Qty Req	Order Quantity
---------	--------------	--------------	-------------	---------	----------------

Complete Minuteman Roller Systems

1	RMJ1002		Minuteman Rear Grooved Roller System	0	
---	---------	--	--------------------------------------	---	--

Detail Description: Complete roller systems include roller, two brackets with bearings and mounting hardware.:

2	RMJ1003		Minuteman Rear Smooth Roller System	0	
---	---------	--	-------------------------------------	---	--

Detail Description: Complete roller systems include roller, two brackets with bearings and mounting hardware.:

Minuteman Rollers Only

3	RM515		Minuteman Grooved Roller Only	0	
---	-------	--	-------------------------------	---	--

Detail Description: Use with Minuteman Roller Bracket System Only:

4	RM516		Minuteman Smooth Roller Only	0	
---	-------	--	------------------------------	---	--

Detail Description: Use with Minuteman Rollers Bracket System Only:

Other Parts Available

5	RJ131		Bracket - Rear LH	0	
---	-------	--	-------------------	---	--

6	RJ132		Bracket - Rear RH	0	
---	-------	--	-------------------	---	--

7	RMMB157		Bearing w/Locking Collar	0	
---	---------	--	--------------------------	---	--

8	R322-1		Bolt - Hex HD 5/16-18 x 1/2	0	
---	--------	--	-----------------------------	---	--

9	R322-3		Bolt - Hex HD 5/16-18 x 3/4	0	
---	--------	--	-----------------------------	---	--

10	R446136	446134, 446136	Washer - Lock 5/16 Zinc	0	
----	---------	-------------------	-------------------------	---	--

11	RMM609		Bushing - Aluminum Spacer	0	
----	--------	--	---------------------------	---	--

12	RMM3		End Hub - 7/8 ID	0	
----	------	--	------------------	---	--

All original equipment manufacturers names and part numbers are used for identification purposes only, and we are in no way implying that our products are original equipment parts. Prices subject to change without notice.