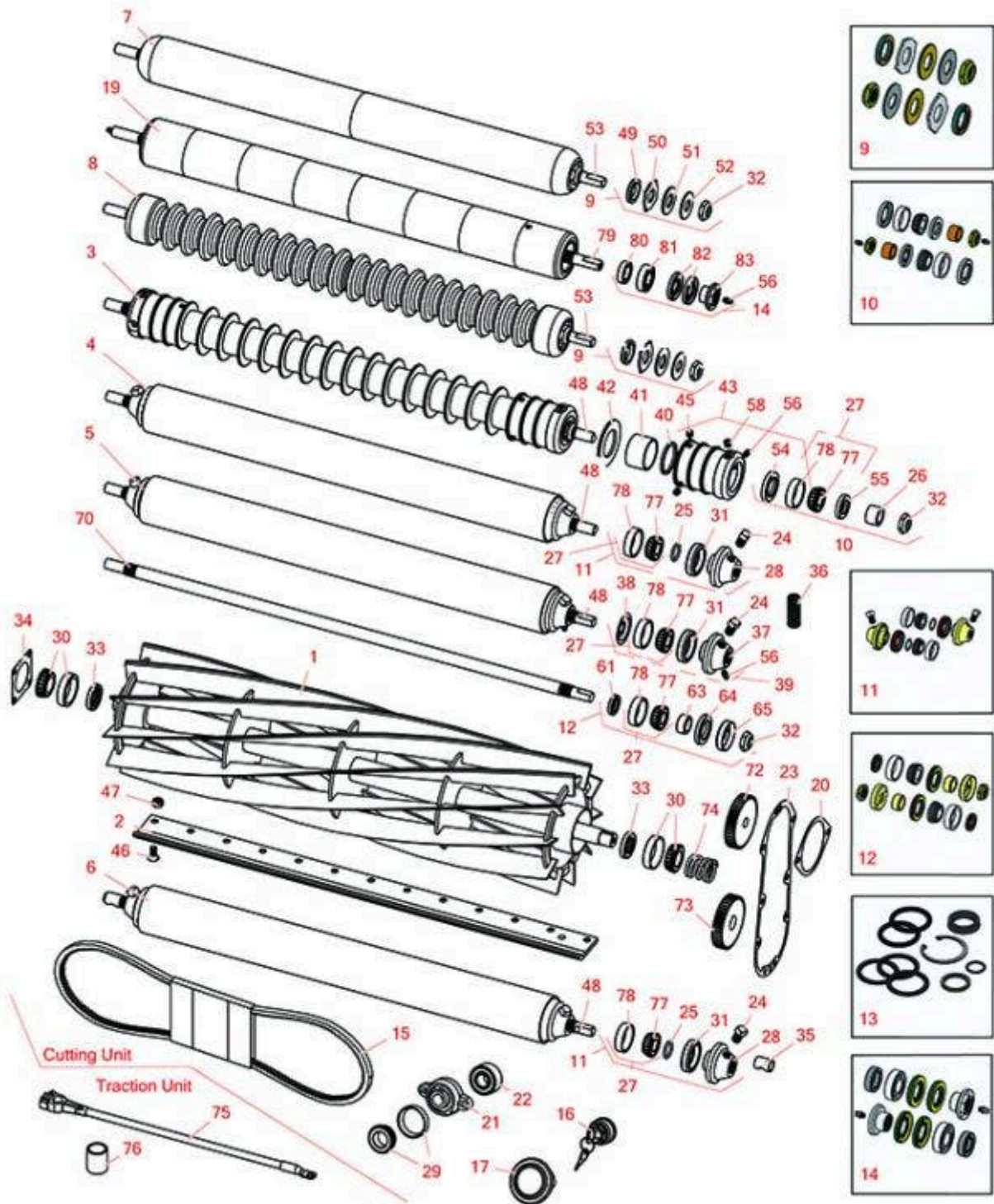




# Replaces Jacobsen HF-5 Parts

Cutting Unit

Reel Bedknife & Roller



All original equipment manufacturers names and part numbers are used for identification purposes only, and we are in no way implying that our products are original equipment parts. Prices subject to change without notice.



# Replaces Jacobsen HF-5 Parts

Cutting Unit  
Reel, Bedknife & Roller



Item No	R&R Part No.	OEM Part No.	Description	Qty Req	Order Quantity
---------	--------------	--------------	-------------	---------	----------------

## R&R Reels, Lifetime Guaranteed

1	<b>R502874</b>	502874	Reel - 6 Blade RH	1
---	----------------	--------	-------------------	---

*Detail Description: R&R Reel blades are expertly crafted from premium high carbon-boron alloy steel, heat-treated to perfectly complement both R&R and OEM bedknives. Each reel undergoes precision cylindrical grinding on bearing surfaces, followed by relief grinding for optimal performance. Advanced computer balancing ensures extended reel and bearing life. Backed by our lifetime guarantee against defects in materials and craftsmanship under normal use, R&R Reels deliver unmatched durability and cutting precision you can trust.:*

1	<b>R502875</b>	502875	Reel - 6 Blade LH	1
---	----------------	--------	-------------------	---

*Detail Description: R&R Reel blades are expertly crafted from premium high carbon-boron alloy steel, heat-treated to perfectly complement both R&R and OEM bedknives. Each reel undergoes precision cylindrical grinding on bearing surfaces, followed by relief grinding for optimal performance. Advanced computer balancing ensures extended reel and bearing life. Backed by our lifetime guarantee against defects in materials and craftsmanship under normal use, R&R Reels deliver unmatched durability and cutting precision you can trust.:*

1	<b>R502876</b>	502876	Reel - 10 Blade RH	1
---	----------------	--------	--------------------	---

*Detail Description: R&R Reel blades are expertly crafted from premium high carbon-boron alloy steel, heat-treated to perfectly complement both R&R and OEM bedknives. Each reel undergoes precision cylindrical grinding on bearing surfaces, followed by relief grinding for optimal performance. Advanced computer balancing ensures extended reel and bearing life. Backed by our lifetime guarantee against defects in materials and craftsmanship under normal use, R&R Reels deliver unmatched durability and cutting precision you can trust.:*

1	<b>R502877</b>	502877	Reel - 10 Blade LH	1
---	----------------	--------	--------------------	---

*Detail Description: R&R Reel blades are expertly crafted from premium high carbon-boron alloy steel, heat-treated to perfectly complement both R&R and OEM bedknives. Each reel undergoes precision cylindrical grinding on bearing surfaces, followed by relief grinding for optimal performance. Advanced computer balancing ensures extended reel and bearing life. Backed by our lifetime guarantee against defects in materials and craftsmanship under normal use, R&R Reels deliver unmatched durability and cutting precision you can trust.:*

1	<b>R503041</b>	503041	Reel - 10 Blade RH 86-ON	1
---	----------------	--------	--------------------------	---

*Detail Description: R&R Reel blades are expertly crafted from premium high carbon-boron alloy steel, heat-treated to perfectly complement both R&R and OEM bedknives. Each reel undergoes precision cylindrical grinding on bearing surfaces, followed by relief grinding for optimal performance. Advanced computer balancing ensures extended reel and bearing life. Backed by our lifetime guarantee against defects in materials and craftsmanship under normal use, R&R Reels deliver unmatched durability and cutting precision you can trust.:*

All original equipment manufacturers names and part numbers are used for identification purposes only, and we are in no way implying that our products are original equipment parts. Prices subject to change without notice.



# Replaces Jacobsen HF-5 Parts

Cutting Unit

Reel, Bedknife & Roller



Item No	R&R Part No.	OEM Part No.	Description	Qty Req	Order Quantity
---------	--------------	--------------	-------------	---------	----------------

1	<b>R503042</b>	503042	Reel - 10 Blade LH 86-ON	1	
<i>Detail Description: R&amp;R Reel blades are expertly crafted from premium high carbon-boron alloy steel, heat-treated to perfectly complement both R&amp;R and OEM bedknives. Each reel undergoes precision cylindrical grinding on bearing surfaces, followed by relief grinding for optimal performance. Advanced computer balancing ensures extended reel and bearing life. Backed by our lifetime guarantee against defects in materials and craftsmanship under normal use, R&amp;R Reels deliver unmatched durability and cutting precision you can trust.:</i>					

1	<b>R503043</b>	503043	Reel - 6 Blade RH 86-ON	1	
<i>Detail Description: R&amp;R Reel blades are expertly crafted from premium high carbon-boron alloy steel, heat-treated to perfectly complement both R&amp;R and OEM bedknives. Each reel undergoes precision cylindrical grinding on bearing surfaces, followed by relief grinding for optimal performance. Advanced computer balancing ensures extended reel and bearing life. Backed by our lifetime guarantee against defects in materials and craftsmanship under normal use, R&amp;R Reels deliver unmatched durability and cutting precision you can trust.:</i>					

1	<b>R503044</b>	503044	Reel - 6 Blade LH 86-ON	1	
<i>Detail Description: R&amp;R Reel blades are expertly crafted from premium high carbon-boron alloy steel, heat-treated to perfectly complement both R&amp;R and OEM bedknives. Each reel undergoes precision cylindrical grinding on bearing surfaces, followed by relief grinding for optimal performance. Advanced computer balancing ensures extended reel and bearing life. Backed by our lifetime guarantee against defects in materials and craftsmanship under normal use, R&amp;R Reels deliver unmatched durability and cutting precision you can trust.:</i>					

## R&R Bedknives, Lifetime Guaranteed

2	<b>R503550</b>	331692, 503363, 503550	Bedknife - 30 in (13 Hole)	1	
<i>Detail Description: R&amp;R Bedknives are manufactured from high carbon-boron alloy steel and then hardened to RC46-49 to match the temper of our reel blades and original equipment reels. Bedknives are surface ground on the top and front edge and straightened three times before being packaged with oil for rust prevention. All R&amp;R Bedknives now have an increased front edge grind for added life. All R&amp;R Bedknives are guaranteed against defects in material and workmanship under normal use for the life of the part.:</i>					

## R&R Rollers

3	<b>R113897RG</b>	123267	Roller - Grooved Repairable Steel	1	
<i>Detail Description: Constructed with a through shaft and greasable ball bearings, this roller can be repaired by unscrewing the ends and replacing the series of washers and spacers.:</i>					

All original equipment manufacturers names and part numbers are used for identification purposes only, and we are in no way implying that our products are original equipment parts. Prices subject to change without notice.



# Replaces Jacobsen HF-5 Parts

Cutting Unit  
Reel, Bedknife & Roller



Item No	R&R Part No.	OEM Part No.	Description	Qty Req	Order Quantity
3	R700513		Roller - Grooved	1	
4	R700512		Roller - Smooth Tubular Steel Oil Filled	1	
4	R113897	113897, 132506	Roller - Smooth Tubular Steel Oil Filled	1	
<i>Detail Description: Constructed with a through shaft, this oil filled heavy-duty roller uses tapered bearings for extended life.:</i>					
5	R700500	700500	Roller - Smooth Tubular Steel Regreasable	1	
<i>Detail Description: Constructed with a through shaft, this heavy duty roller uses greasable tapered bearings for extended life.:</i>					
6	R700400		Roller - Front w/ Bushing	1	
7	R1013902		Roller - Smooth UHMW Polyethylene	1	
<i>Detail Description: Machined from solid UHMW, this low maintenance roller uses a 1" solid stainless steel shaft and requires no grease. UHMW material prevents build-up of debris.:</i>					
8	R1013800		Roller - Grooved UHMW Polyethylene	1	
<i>Detail Description: Machined from solid UHMW, this low maintenance roller rotates around a 1" solid stainless steel shaft and requires no bearings or grease. Patented groove design and smooth UHMW material prevent build-up of debris. (2006 &amp; Up):</i>					
19	R1013910		Roller - Fusion Smooth UHMW Polyethylene	1	
<i>Detail Description: Machined from solid UHMW plastic that prevents build-up of debris. This roller turns on precision stainless ball bearings.:</i>					
<b>Overhaul Kits</b>					
9	R101399		Overhaul Kit - UHMW 2 Pc Roller	1	
<i>Detail Description: Fits all R&amp;R 2-1/2" - 3-1/2" Dia. Black UHMW Plastic Rollers that do not use ball bearings.. Includes 2 ea.: R1503230 Star Washers, R1503470 Seals, R150333 Thrust Washers, R3296-15 Locknuts, R1503471 Bronze Thrust Washers:</i>					

All original equipment manufacturers names and part numbers are used for identification purposes only, and we are in no way implying that our products are original equipment parts. Prices subject to change without notice.





# Replaces Jacobsen HF-5 Parts

Cutting Unit  
Reel, Bedknife & Roller



Item No	R&R Part No.	OEM Part No.	Description	Qty Req	Order Quantity
10	<b>R100135</b>		Overhaul Kit - Roller	0	
<i>Detail Description: Includes 2 ea.: R302-5 Grease Fittings, R253-122 Seals, R253-117 Seals, R150674 Wear Sleeves, R254-78 Bearings, R254-79 Bearing Cups, &amp; R3296-15 Locknuts:</i>					
11	<b>R100140</b>		Overhaul Kit - Oil Filled Roller	0	
<i>Detail Description: Includes 2 ea.: R500574 Roller Collar, R500534 Bearing Cup &amp; Cone, R459007 O-ring, R328062 Seal, R412063 Screw:</i>					
12	<b>R100133</b>		Overhaul Kit - Roller	1	
<i>Detail Description: Includes: 2ea: R254-78 Bearings, R254-79 Bearing Cups, R3296-15 Locknuts, R338645 Cup Deflectors, R338646 Seals, R338647 Seals, &amp; R366168 Wear Sleeves:</i>					
13	<b>R500798</b>	500798	Seal Kit - Fits R130210 Cylinder	1	
14	<b>R114-5430</b>	114-5430	Overhaul Kit - Roller	1	
<i>Detail Description: Includes 4 ea.: R112-7494 Seals; 2 ea.: R302-5 Grease Zerks, R114-3717 Seals, R112-5290 Bearings &amp; R114-3745 Locknuts:</i>					
<b>Belts</b>					
15	<b>R101420</b>	337854	Belt - Pump	1	
<b>Gauges and Controls</b>					
17	<b>R162723</b>	162723, 358825	Meter - Hour	1	
16	<b>R12-8140</b>	129846	Switch - Key 5 Lead	1	
<b>Other Parts Available</b>					
20	<b>R359960</b>	359960	Gasket - Hyd Motor	1	
21	<b>R361441</b>	361441	Bearing - Flange	2	
22	<b>R361443</b>	361443	Bearing - Idler Belt	1	
23	<b>R390379</b>	390379	Gasket - Cover	1	
24	<b>R412063</b>	412063	Screw - Sq. HD. Set	2	

All original equipment manufacturers names and part numbers are used for identification purposes only, and we are in no way implying that our products are original equipment parts. Prices subject to change without notice.



# Replaces Jacobsen HF-5 Parts

Cutting Unit

Reel, Bedknife & Roller



Item No	R&R Part No.	OEM Part No.	Description	Qty Req	Order Quantity
25	<b>R459007</b>	459007	O-Ring - Roller	2	
26	<b>R150674</b>	150674	Sleeve - Wear 3/4 Plated	2	
27	<b>R500534</b>	500534, R500534	Bearing - with Cup	2	
<i>Detail Description: Kit includes: 1 ea R254-78- Bearing Cone &amp; R254-79 Bearing Cone:</i>					
28	<b>R500574</b>	500574	Collar - Roller	2	
29	<b>R500596</b>	500596	Tapered Bearing Set - Cup and Cone	4	
30	<b>R500711</b>	500711	Bearing - with Cup	2	
31	<b>R328062</b>	328062	Seal - Roller	2	
32	<b>R3296-15</b>	3296-15, 367029, 444742	Locknut - 3/4-16 Nylon Jam	1	
33	<b>R337593</b>	3000983, 337593	Seal	2	
34	<b>R350698</b>	350698	Gasket - Bearing Housing	1	
35	<b>R700401</b>		Bushing - Front Roller	1	
36	<b>R351417</b>	351417	Spring - Reel to Bedknife	1	
37	<b>R700501</b>	700501	Roller End - Regreasable	2	
38	<b>R700502</b>	700502	Retainer - Grease	2	
39	<b>R700505</b>		Conversion Kit - Roller	1	
<i>Detail Description: Includes: 2 each: R254-78 Bearing Cones, R254-79 Bearing Cups, R328062 Seals, R412063 Square Head Set Screws, R700501 Roller Ends &amp; R700502 Grease Retainers.:</i>					
40	<b>R150676A</b>		Spacer - 1/8	2	
41	<b>R150671</b>		Spacer - 2 3/4 / 3 Rollers 13/16 L	0	
41	<b>R150676</b>	150676	Spacer - 2-3/4 Dia x 1-1/4 L	10	

All original equipment manufacturers names and part numbers are used for identification purposes only, and we are in no way implying that our products are original equipment parts. Prices subject to change without notice.



## Replaces Jacobsen HF-5 Parts

*Cutting Unit*

*Reel, Bedknife & Roller*



Item No	R&R Part No.	OEM Part No.	Description	Qty Req	Order Quantity
42	R150673	150673	Washer - 3 Repairable Roller	11	
43	R150675		Roller - End - 3 Threaded	2	
45	R150691		Screw - Set Nyloc 3/8-16 x 3/8	4	
46	R101270	402698, 403757	Screw - Bedknife 3/8-24 x 13/16	13	
47	R101271	445684	Nut - Bedknife	13	
48	R328058	328058	Shaft - Roller	1	
48	R700514		Shaft - Roller - 35-1/16	1	
49	R1503470		Seal - Inner Wiper	2	
50	R1503230		Washer - Thrust Outer Keyed	2	
51	R1503471		Washer - Thrust SAE660 Bronze	2	
52	R150333		Washer - Flat Keyed Outer SS	2	
53	R1013831		Shaft - 1in Stainless Steel	1	
54	R253-117	253-117, 3004882	Seal - Outer Triple Lip	2	
55	R253-122		Seal	2	
56	R302-5	302-5, 471214, 471223, 471226	Fitting - Grease	2	
58	R170714	170714, 471240, 471242	Fitting - Pressure Relief	2	
<b>Replaces Jacobsen 132506 Roller Parts</b>					
61	R338647	338647	Seal - Inner Roller	2	
63	R366168	336168, 366168	Sleeve - Wear Hardened	2	

All original equipment manufacturers names and part numbers are used for identification purposes only, and we are in no way implying that our products are original equipment parts. Prices subject to change without notice.



## Replaces Jacobsen HF-5 Parts

Cutting Unit

Reel, Bedknife & Roller



Item No	R&R Part No.	OEM Part No.	Description	Qty Req	Order Quantity
64	<b>R338646</b>	338646	Seal - Outer Roller	2	
65	<b>R338645</b>	338645	Deflector - Cup	2	
70	<b>R339051</b>	339051	Shaft - Roller - Fits OEM Rollers	1	
72	<b>R162693</b>	162693	Gear - Idler 45 Teeth	1	
73	<b>R337390</b>	337390	Gear - Reel	1	
74	<b>R350671</b>	350671	Spring - Reel	1	
75	<b>R153244</b>	153244	Cable - Battery Negative	1	
76	<b>R315296</b>	315296	Bushing - Pivot Housing	2	
77	<b>R254-78</b>	254-78, 385174, 4121174, 4135152	Tapered Bearing Cone	2	
78	<b>R254-79</b>	254-79, 4121175	Cup - Bearing	2	
<i>Detail Description: Use R254-79M installation mandrel to properly install race.:</i>					
79	<b>R1013911</b>		Shaft	1	
80	<b>R114-3717</b>		Seal	2	
81	<b>R112-5290</b>		Bearing - Stainless	2	
82	<b>R112-7494</b>		Seal	4	
83	<b>R114-3745</b>		Locknut - Bearing - Stainless	2	

All original equipment manufacturers names and part numbers are used for identification purposes only, and we are in no way implying that our products are original equipment parts. Prices subject to change without notice.