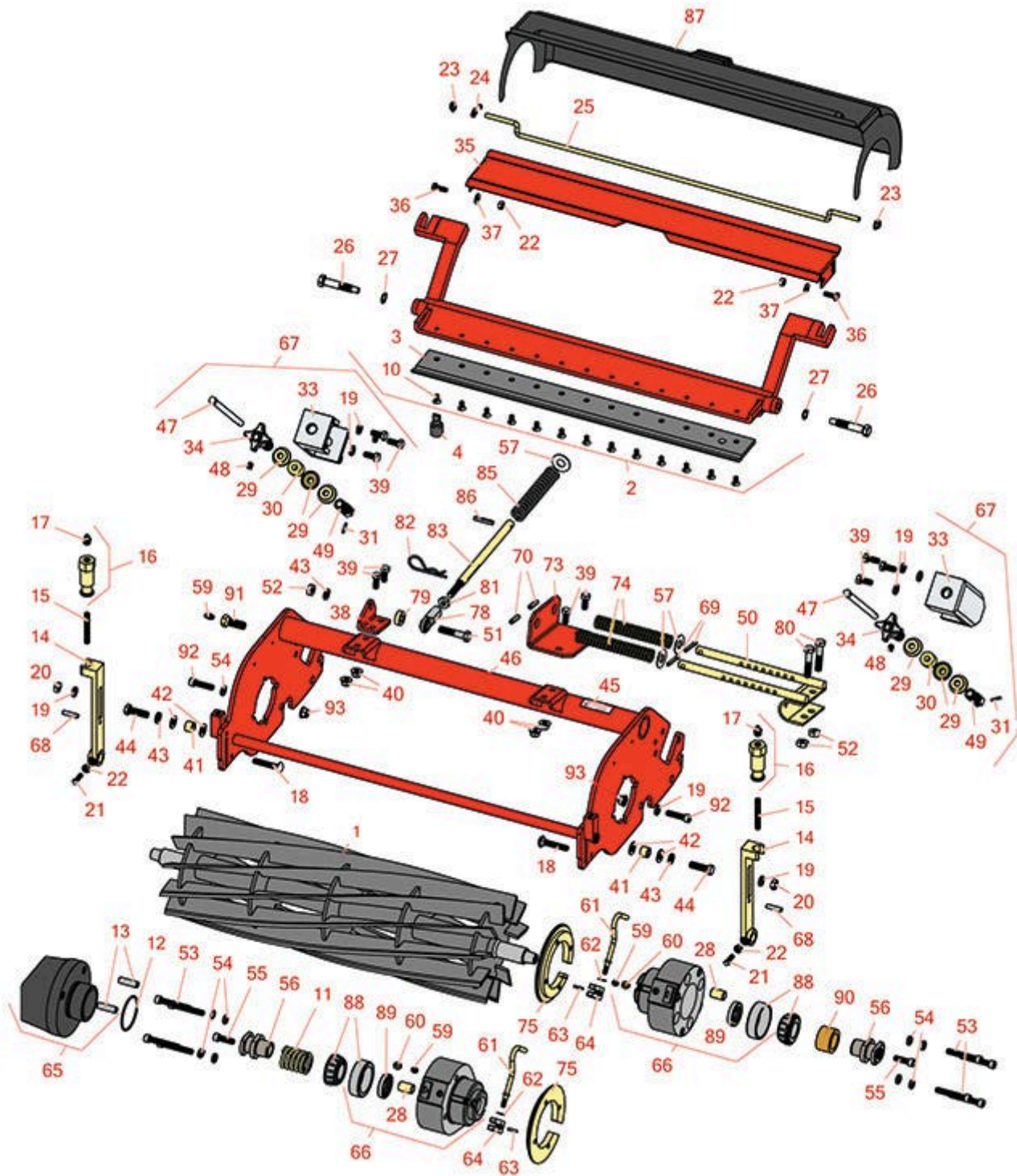




# Replaces Jacobsen LF-135 Parts

7" Reel Units  
Reel & Bedknife



All original equipment manufacturers names and part numbers are used for identification purposes only, and we are in no way implying that our products are original equipment parts. Prices subject to change without notice.



# Replaces Jacobsen LF-135 Parts

7" Reel Units

Reel & Bedknife



Item No	R&R Part No.	OEM Part No.	Description	Qty Req	Order Quantity
---------	--------------	--------------	-------------	---------	----------------

## R&R Reels, Lifetime Guaranteed

1	<b>R101329</b>		Reel - 7 Blade	1
---	----------------	--	----------------	---

*Detail Description:* R&R Reel blades are manufactured from high carbon-boron alloy steel and then hardened to RC46-49 to match the temper of our bedknives and original equipment bedknives. All R&R Reels are cylindrically ground on bearing surfaces and then relief ground. Reels are then precision computer balanced for extended bearing and reel life. R&R Products Reels are guaranteed against defects in material and workmanship for the life of the reel under normal use.:

1	<b>R5002476</b>	5002476	Reel - 9 Blade	1
---	-----------------	---------	----------------	---

*Detail Description:* R&R Reel blades are expertly crafted from premium high carbon-boron alloy steel, heat-treated to perfectly complement both R&R and OEM bedknives. Each reel undergoes precision cylindrical grinding on bearing surfaces, followed by relief grinding for optimal performance. Advanced computer balancing ensures extended reel and bearing life. Backed by our lifetime guarantee against defects in materials and craftsmanship under normal use, R&R Reels deliver unmatched durability and cutting precision you can trust.:

1	<b>R2810471</b>	2810471	Reel - 9 Blade	1
---	-----------------	---------	----------------	---

*Detail Description:* R&R Reel blades are expertly crafted from premium high carbon-boron alloy steel, heat-treated to perfectly complement both R&R and OEM bedknives. Each reel undergoes precision cylindrical grinding on bearing surfaces, followed by relief grinding for optimal performance. Advanced computer balancing ensures extended reel and bearing life. Backed by our lifetime guarantee against defects in materials and craftsmanship under normal use, R&R Reels deliver unmatched durability and cutting precision you can trust.:

1	<b>R5002762</b>	2810472, 5002762	Reel - 11 Blade	1
---	-----------------	---------------------	-----------------	---

*Detail Description:* R&R Reel blades are expertly crafted from premium high carbon-boron alloy steel, heat-treated to perfectly complement both R&R and OEM bedknives. Each reel undergoes precision cylindrical grinding on bearing surfaces, followed by relief grinding for optimal performance. Advanced computer balancing ensures extended reel and bearing life. Backed by our lifetime guarantee against defects in materials and craftsmanship under normal use, R&R Reels deliver unmatched durability and cutting precision you can trust.:

## R&R Bedknives, Lifetime Guaranteed

2	<b>R1002556</b>	1002556	Bedknife/Bedbar Assy	1
---	-----------------	---------	----------------------	---

*Tech Note:* w/ R503257 Bedknife:

All original equipment manufacturers names and part numbers are used for identification purposes only, and we are in no way implying that our products are original equipment parts. Prices subject to change without notice.



## Replaces Jacobsen LF-135 Parts

7" Reel Units

Reel & Bedknife



Item R&R

No Part No.

OEM

Part No.

Description

Qty  
Req

Order  
Quantity

*Detail Description: R&R Bedknives are manufactured from high carbon-boron alloy steel and then hardened to RC46-49 to match the temper of our reel blades and original equipment reels. Bedknives are surface ground on the top and front edge and straightened three times before being packaged with oil for rust prevention. All R&R Bedknives now have an increased front edge grind for added life. All R&R Bedknives are guaranteed against defects in material and workmanship under normal use for the life of the part.:*

Item No	R&R Part No.	OEM Part No.	Description	Qty Req	Order Quantity
2	<b>R1003934</b>	1003934	Bedknife/Bedbar Assy	1	

*Tech Note: w/ R5003150 Bedknife:*

*Detail Description: R&R Bedknives are manufactured from high carbon-boron alloy steel and then hardened to RC46-49 to match the temper of our reel blades and original equipment reels. Bedknives are surface ground on the top and front edge and straightened three times before being packaged with oil for rust prevention. All R&R Bedknives now have an increased front edge grind for added life. All R&R Bedknives are guaranteed against defects in material and workmanship under normal use for the life of the part.:*

3	<b>R5003150</b>	5003150	Bedknife - Low Cut	1	
---	-----------------	---------	--------------------	---	--

*Detail Description: R&R Bedknives are manufactured from high carbon-boron alloy steel and then hardened to RC46-49 to match the temper of our reel blades and original equipment reels. Bedknives are surface ground on the top and front edge and straightened three times before being packaged with oil for rust prevention. All R&R Bedknives now have an increased front edge grind for added life. All R&R Bedknives are guaranteed against defects in material and workmanship under normal use for the life of the part.:*

3	<b>R503460</b>	503257, 503460	Bedknife - 22 in 13 Hole	1	
---	----------------	-------------------	--------------------------	---	--

*Detail Description: R&R Bedknives are manufactured from high carbon-boron alloy steel and then hardened to RC46-49 to match the temper of our reel blades and original equipment reels. Bedknives are surface ground on the top and front edge and straightened three times before being packaged with oil for rust prevention. All R&R Bedknives now have an increased front edge grind for added life. All R&R Bedknives are guaranteed against defects in material and workmanship under normal use for the life of the part.:*

### R&R Razor Tool Steel Bedknives, Lifetime Guaranteed

3	<b>R101523</b>		Bedknife - Razor Tool Steel - 22 High Cut	1	
---	----------------	--	---	---	--

All original equipment manufacturers names and part numbers are used for identification purposes only, and we are in no way implying that our products are original equipment parts. Prices subject to change without notice.



# Replaces Jacobsen LF-135 Parts

7" Reel Units

Reel & Bedknife



Item No	R&R Part No.	OEM Part No.	Description	Qty Req	Order Quantity
---------	--------------	--------------	-------------	---------	----------------

*Detail Description: R&R Razor bedknives are manufactured from premium alloy tool steel steel and then hardened to RC48-51 to match the temper of our Razor reel blades and original equipment premium series reels. Bedknives are surface ground on the top and front edge and specially packaged for rust prevention. All R&R Bedknives now have an increased front edge grind for added life. All R&R Bedknives are guaranteed against defects in material and workmanship under normal use for the life of the part. You can expect up to double the life over standard bedknives.:*

## Service Tools

4	<b>R101272T</b>		Bedknife Screw Driver Tool	0
---	-----------------	--	----------------------------	---

*Tech Note: Easily install and remove bed knife screws with the help of a ratchet. Tool manufactured with hardened alloy steel.:*

*Detail Description: Easily install and remove bed knife screws with the help of a ratchet. Tool manufactured with hardened alloy steel.:*

## Other Parts Available

10	<b>R101272</b>	101272, 3009138, 402578, 800813	Screw - Bedknife 1/4-20 x 1/2	13
11	<b>R3004734</b>	3004734	Spring - Compression	1
12	<b>R3006021</b>	3006021	O-Ring	1
13	<b>R3006022</b>	3006022	Pin - Hardened Counter Balance	2
14	<b>R3004738</b>	3004738	Adjuster - Front Roller	2
15	<b>R343616</b>	343616, 443102	Stud	2
16	<b>R365009</b>	3005692, 365009, 365170, 441674	Knob - Adjusting Roller	2
17	<b>R471219</b>	366852, 471219	Zerk - Grease	2
18	<b>R441674</b>	441674	Screw - 5/16-18 x 1-3/4 Carriage	2

All original equipment manufacturers names and part numbers are used for identification purposes only, and we are in no way implying that our products are original equipment parts. Prices subject to change without notice.



## Replaces Jacobsen LF-135 Parts

7" Reel Units

Reel & Bedknife



Item No	R&R Part No.	OEM Part No.	Description	Qty Req	Order Quantity
19	R446136	446134, 446136	Washer - Lock 5/16 Zinc	2	
20	R443106	443106	Nut - 5/16-18 Y/Zinc Plated	2	
21	R352737	352737	Screw - Set 1/4 x 7/8 Sq Head	2	
22	R443102	443102	Nut - 1/4-20 Yellow Zinc	4	
23	R445525	445525	Nut - 1/4 Pal	2	
24	R3009281	3009281	Spring - Torsion 22 Roller	1	
24	R3005267	3005267	Spring - Torsion 24 Roller	1	
25	R3009280	3009280	Scraper - 22 Rear Roller (Rod)	1	
25	R3005316	3005316	Scraper - 24 Rear Roller (Rod)	1	
26	R347169	347169, 365501	Stud - Backing RH 2-5/16	2	
27	R454017	454017	Shim - Bed Bar Bolt	2	
28	R545940	2500759, 545940	Bushing	2	
29	R3009892	3009075, 3009892	Spacer - Cup	6	
30	R3010470	3008946, 3010470	Spring - Urethane	2	
31	R460026	460026	Pin - Cotter 1/8 x 3/4	2	
33	R3004795	3004795	Housing - Bed Knife Adj	1	
34	R2000125	2000125, 2000215	Knob, Bedknife Adj.	2	
35	R3006248	3006248	Deflector	1	
36	R321-4	321-4, 400108	Bolt - Hex HD 1/4-20 x 3/4	2	

All original equipment manufacturers names and part numbers are used for identification purposes only, and we are in no way implying that our products are original equipment parts. Prices subject to change without notice.



## Replaces Jacobsen LF-135 Parts

7" Reel Units

Reel & Bedknife



Item No	R&R Part No.	OEM Part No.	Description	Qty Req	Order Quantity
37	R453023	453023	Washer - Flat 1/4	2	
38	R3008601	3008601	Bracket - Spring Holddown	1	
39	R400184	400184, 400194	Screw - 5/16-18 x 3/4 Hex	2	
40	R445722	445722	Nut - Serrated Washer	2	
41	R3006290	3006290	Spacer - Hardened	2	
42	R453011	453011	Washer - Flat 3/8 SAE Y/Zinc	4	
43	R3254-6	3254-6, 446140, 446142	Washer - Lock 3/8	2	
44	R400264	400264	Bolt - Hex HD 3/8-16 x 1-1/4	2	
45	R354083	354083, 361877, 4127335	Decal - Danger	2	
46	R5002609	5002609	Frame	1	
47	R3010472	3004798, 3010472	Rod - Bedknife Adj	2	
48	R422511	422511	Screw - Set w/Nylon Plug	2	
49	R3010471	3004799, 3009894, 3010471	Bolt - Special	2	
50	R1002682	1002682	Support - Down Pressure Spr	1	
52	R443110	306562, 443110, 444762	Nut - 3/8-16 Hex	2	
53	R434049	434049	Bolt - Soc HD Cap 5/16-18 x 2	8	
54	R362643	362643	Spacer - Brg Housing	8	

All original equipment manufacturers names and part numbers are used for identification purposes only, and we are in no way implying that our products are original equipment parts. Prices subject to change without notice.



## Replaces Jacobsen LF-135 Parts

7" Reel Units

Reel & Bedknife



Item No	R&R Part No.	OEM Part No.	Description	Qty Req	Order Quantity
55	R434004	434003, 434004	Screw - Soc HD 5/16-18 x 1	2	
56	R4166860	3004737, 3010046, 4166860	Coupler	2	
57	R453017	452012, 453017	Washer - Flat 1/2	2	
59	R302-5	302-5, 471214, 471223, 471226	Fitting - Grease	2	
60	R170714	170714, 471240, 471242	Fitting - Pressure Relief	2	
61	R3006028	3006028	Rod	2	
62	R455066	455066	Washer - M6 Flat	2	
63	R012419	461357, 461359	Pin - Roll 1/8 x 3/4	2	
64	R4130092	4130092	Block - Clamp	2	
65	R2000135	2000135	Casting - Weight - Counter Balance	1	
66	R1002811	1002811	Bearing Housing Assy	2	
67	R1002532	1002532	Adjusting Assy - Bedknife	2	
68	R461256	461256	Pin - 1/4 x 1	2	
69	R460050	460050	Pin - Cotter 3/16 x 1-1/4	2	
70	R461387	461387	Pin - Spring Roll 1/4 x 1	2	
73	R365162	365162	Bracket	1	
74	R365165	365165	Spring - Compression	2	
75	R3005210	3005210	Ring - Retaining	1	

All original equipment manufacturers names and part numbers are used for identification purposes only, and we are in no way implying that our products are original equipment parts. Prices subject to change without notice.



## Replaces Jacobsen LF-135 Parts

7" Reel Units

Reel & Bedknife



Item No	R&R Part No.	OEM Part No.	Description	Qty Req	Order Quantity
78	R366974	366974	Bearing - Rod End	1	
79	R352435	352435	Spacer	1	
80	R400266	400266	Bolt - Hex HD 3/8-16 x 1-1/2	1	
80	R400268	400268	Bolt - Hex HD 3/8-16 x 1-3/4	1	
81	R3219-3	3219-3, 443112, 443812	Nut - 3/8-24	1	
82	R460312	460312	Pin - Hair Cotter	1	
83	R3008593	3008593	Shaft - Down Pressure	1	
85	R311870	311870	Spring - Compression	1	
86	R461397	461397	Pin - Roll 1/4 x 1-1/4	1	
87	R3005209	3005209	Shield - Grass	1	
88	R5002477	5002477	Bearing - w/Cup	2	
89	R3006030	3006030	Seal	2	
90	R3004800	3004800	Spacer - Hardened Reel	1	
91	R163568	163568	Bolt - Grease	2	
92	R434036	434036	Screw - Soc HD 5/16-18 x 1-1/4	2	
93	R445795	445795	Nut - 5/16-18 Flanged	2	

All original equipment manufacturers names and part numbers are used for identification purposes only, and we are in no way implying that our products are original equipment parts. Prices subject to change without notice.