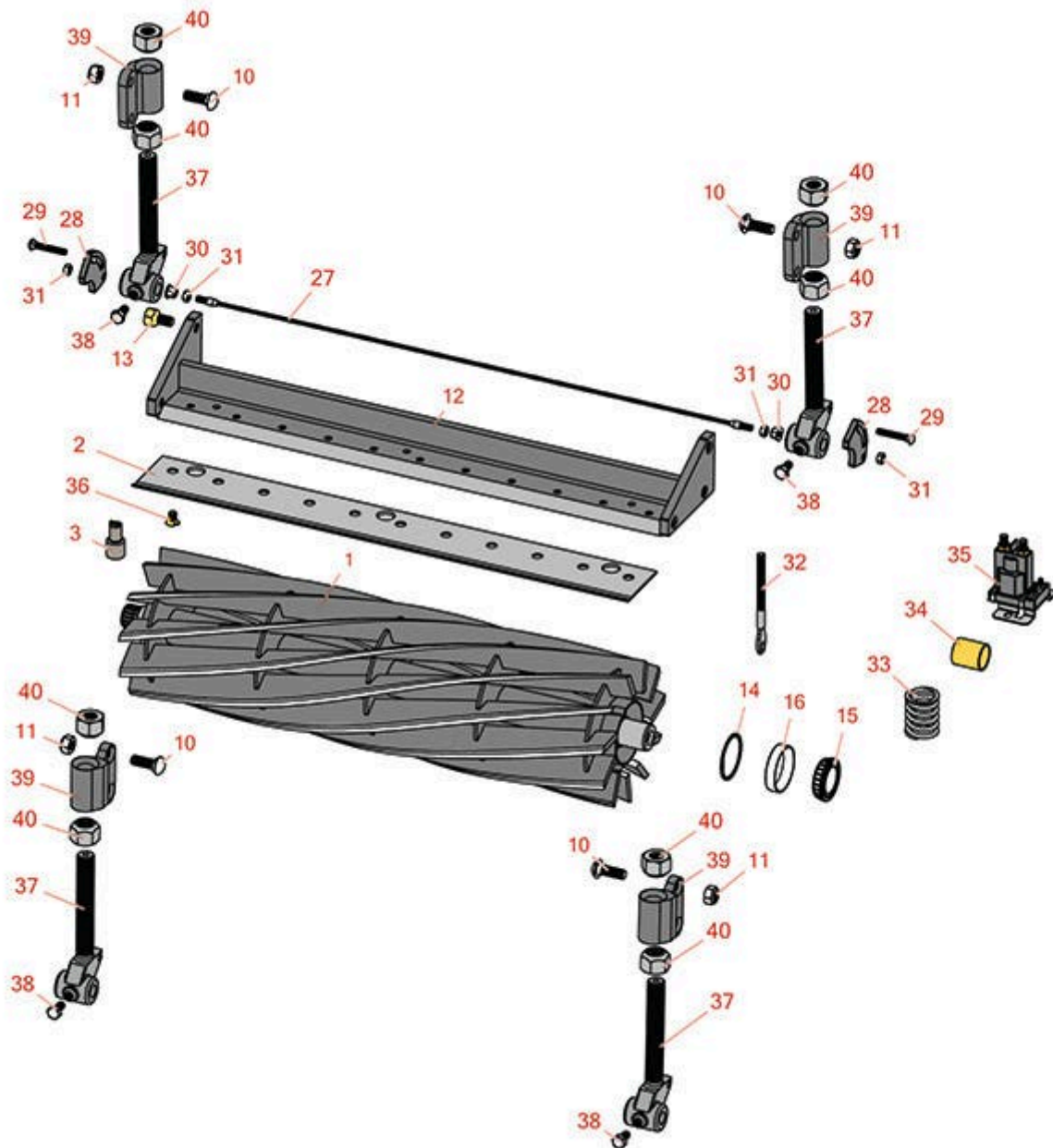




# Replaces Jacobsen LF-3050 Parts

Cutting Unit  
Reel & Bedknife



All original equipment manufacturers names and part numbers are used for identification purposes only, and we are in no way implying that our products are original equipment parts. Prices subject to change without notice.



# Replaces Jacobsen LF-3050 Parts

Cutting Unit  
Reel & Bedknife



Item No	R&R Part No.	OEM Part No.	Description	Qty Req	Order Quantity
---------	--------------	--------------	-------------	---------	----------------

## R&R Reels, Lifetime Guaranteed

1	<b>R4115122</b>	4115122	Reel - 11 Blade	1
---	-----------------	---------	-----------------	---

*Tech Note: Fits 22 in Units Only:*

*Detail Description: R&R Reel blades are expertly crafted from premium high carbon-boron alloy steel, heat-treated to perfectly complement both R&R and OEM bedknives. Each reel undergoes precision cylindrical grinding on bearing surfaces, followed by relief grinding for optimal performance. Advanced computer balancing ensures extended reel and bearing life. Backed by our lifetime guarantee against defects in materials and craftsmanship under normal use, R&R Reels deliver unmatched durability and cutting precision you can trust.:*

1	<b>R4115123</b>	4115123	Reel - 7 Blade	1
---	-----------------	---------	----------------	---

*Tech Note: Fits 22 in Units Only:*

*Detail Description: R&R Reel blades are expertly crafted from premium high carbon-boron alloy steel, heat-treated to perfectly complement both R&R and OEM bedknives. Each reel undergoes precision cylindrical grinding on bearing surfaces, followed by relief grinding for optimal performance. Advanced computer balancing ensures extended reel and bearing life. Backed by our lifetime guarantee against defects in materials and craftsmanship under normal use, R&R Reels deliver unmatched durability and cutting precision you can trust.:*

1	<b>R4115124</b>	4115124	Reel - 11 Blade	1
---	-----------------	---------	-----------------	---

*Tech Note: Fits 26 in Units Only:*

*Detail Description: R&R Reel blades are expertly crafted from premium high carbon-boron alloy steel, heat-treated to perfectly complement both R&R and OEM bedknives. Each reel undergoes precision cylindrical grinding on bearing surfaces, followed by relief grinding for optimal performance. Advanced computer balancing ensures extended reel and bearing life. Backed by our lifetime guarantee against defects in materials and craftsmanship under normal use, R&R Reels deliver unmatched durability and cutting precision you can trust.:*

1	<b>R4115125</b>	4115125	Reel - 7 Blade	1
---	-----------------	---------	----------------	---

*Tech Note: Fits 26 in Units Only:*

*Detail Description: R&R Reel blades are expertly crafted from premium high carbon-boron alloy steel, heat-treated to perfectly complement both R&R and OEM bedknives. Each reel undergoes precision cylindrical grinding on bearing surfaces, followed by relief grinding for optimal performance. Advanced computer balancing ensures extended reel and bearing life. Backed by our lifetime guarantee against defects in materials and craftsmanship under normal use, R&R Reels deliver unmatched durability and cutting precision you can trust.:*

## R&R Bedknives, Lifetime Guaranteed

All original equipment manufacturers names and part numbers are used for identification purposes only, and we are in no way implying that our products are original equipment parts. Prices subject to change without notice.



# Replaces Jacobsen LF-3050 Parts

Cutting Unit  
Reel & Bedknife



Item No	R&R Part No.	OEM Part No.	Description	Qty Req	Order Quantity
2	<b>R2202002</b>	2202002	Bedknife - Thin 5mm	1	

*Tech Note: Fits 22 in Units Only:*

*Detail Description: R&R Bedknives are manufactured from high carbon-boron alloy steel and then hardened to RC46-49 to match the temper of our reel blades and original equipment reels. Bedknives are surface ground on the top and front edge and straightened three times before being packaged with oil for rust prevention. All R&R Bedknives now have an increased front edge grind for added life. All R&R Bedknives are guaranteed against defects in material and workmanship under normal use for the life of the part.:*

2	<b>R2202305</b>	2202305	Bedknife - 10mm	1	
---	-----------------	---------	-----------------	---	--

*Tech Note: Fits 22 in Units Only:*

*Detail Description: R&R Bedknives are manufactured from high carbon-boron alloy steel and then hardened to RC46-49 to match the temper of our reel blades and original equipment reels. Bedknives are surface ground on the top and front edge and straightened three times before being packaged with oil for rust prevention. All R&R Bedknives now have an increased front edge grind for added life. All R&R Bedknives are guaranteed against defects in material and workmanship under normal use for the life of the part.:*

2	<b>R2202306</b>	2202306	Bedknife - 10mm	1	
---	-----------------	---------	-----------------	---	--

*Tech Note: Fits 26 in Units Only:*

*Detail Description: R&R Bedknives are manufactured from high carbon-boron alloy steel and then hardened to RC46-49 to match the temper of our reel blades and original equipment reels. Bedknives are surface ground on the top and front edge and straightened three times before being packaged with oil for rust prevention. All R&R Bedknives now have an increased front edge grind for added life. All R&R Bedknives are guaranteed against defects in material and workmanship under normal use for the life of the part.:*

## Service Tools

3	<b>R51-0880</b>		Bedknife Screw Driver Tool	0	
---	-----------------	--	----------------------------	---	--

*Detail Description: Easily install and remove bed knife screws with the help of a ratchet with 3/8" drive. Tool manufactured with hardened alloy steel.:*

## Other Parts Available

10	<b>R64243-01</b>	64243-01	Bolt - Carriage M10-1.5 x 30	4	
11	<b>R64237-03</b>	64237-03	Locknut - 10mm x 1.5 Nylon Jam	8	

All original equipment manufacturers names and part numbers are used for identification purposes only, and we are in no way implying that our products are original equipment parts. Prices subject to change without notice.



## Replaces Jacobsen LF-3050 Parts

Cutting Unit  
Reel & Bedknife



Item No	R&R Part No.	OEM Part No.	Description	Qty Req	Order Quantity
12	<b>R2206011</b>	2206011.7	Bed Bar - 22 in Units	1	
12	<b>R2206081</b>	2206081.7	Bed Bar - 26 in Units	1	
13	<b>R64242</b>	64242	Stud - Bed Bar	6	
14	<b>R2208004</b>	2208004	Retaining Ring - Reel Housing	2	
15	<b>R4121172</b>	4121172	Tapered Bearing Cup	2	
16	<b>R4121173</b>	4121173	Tapered Bearing Cup	2	
27	<b>R2208018</b>	2208018	Scraper Cable - Fits 22 in Units	1	
27	<b>R2208019</b>	2208019	Scraper Cable - Fits 26 in Units	1	
28	<b>R2202132</b>	2202132	Bracket - Rear Roller Scraper	2	
29	<b>R64018-22</b>	64018-22	Bolt - Carriage M6 x 35	2	
30	<b>R64237-02</b>	64237-02	Locknut - ESNA 6mm x 1.0	2	
31	<b>R64207-06</b>	64207-06	Nut - M6 x 1.0	4	
32	<b>R2203020</b>	2203020	Adjusting Rod - Reel to Bedknife	2	
33	<b>R2208131</b>	2208131	Spring - Bed Bar	2	
34	<b>R48048A</b>	48048A	Sleeve - Bearing Bronze	2	
35	<b>R38665</b>	38665	Solenoid	1	
36	<b>R150477</b>	A119001	Screw - Bedknife 5/16-18 x 1/2	11	
37	<b>RMBE3982</b>	2201004	Bracket - Roller Front / Rear	4	
38	<b>R64205-018</b>	64205-018	Bolt - Hex HD M8-1.25 x 16	4	
39	<b>R2201010</b>	2201010.7	Housing - Roller Adj	4	

All original equipment manufacturers names and part numbers are used for identification purposes only, and we are in no way implying that our products are original equipment parts. Prices subject to change without notice.



# Replaces Jacobsen LF-3050 Parts

Cutting Unit  
Reel & Bedknife



Item No	R&R Part No.	OEM Part No.	Description	Qty Req	Order Quantity
40	R64254-01	64254-01	Nut - Roller Adj.	8	

All original equipment manufacturers names and part numbers are used for identification purposes only, and we are in no way implying that our products are original equipment parts. Prices subject to change without notice.