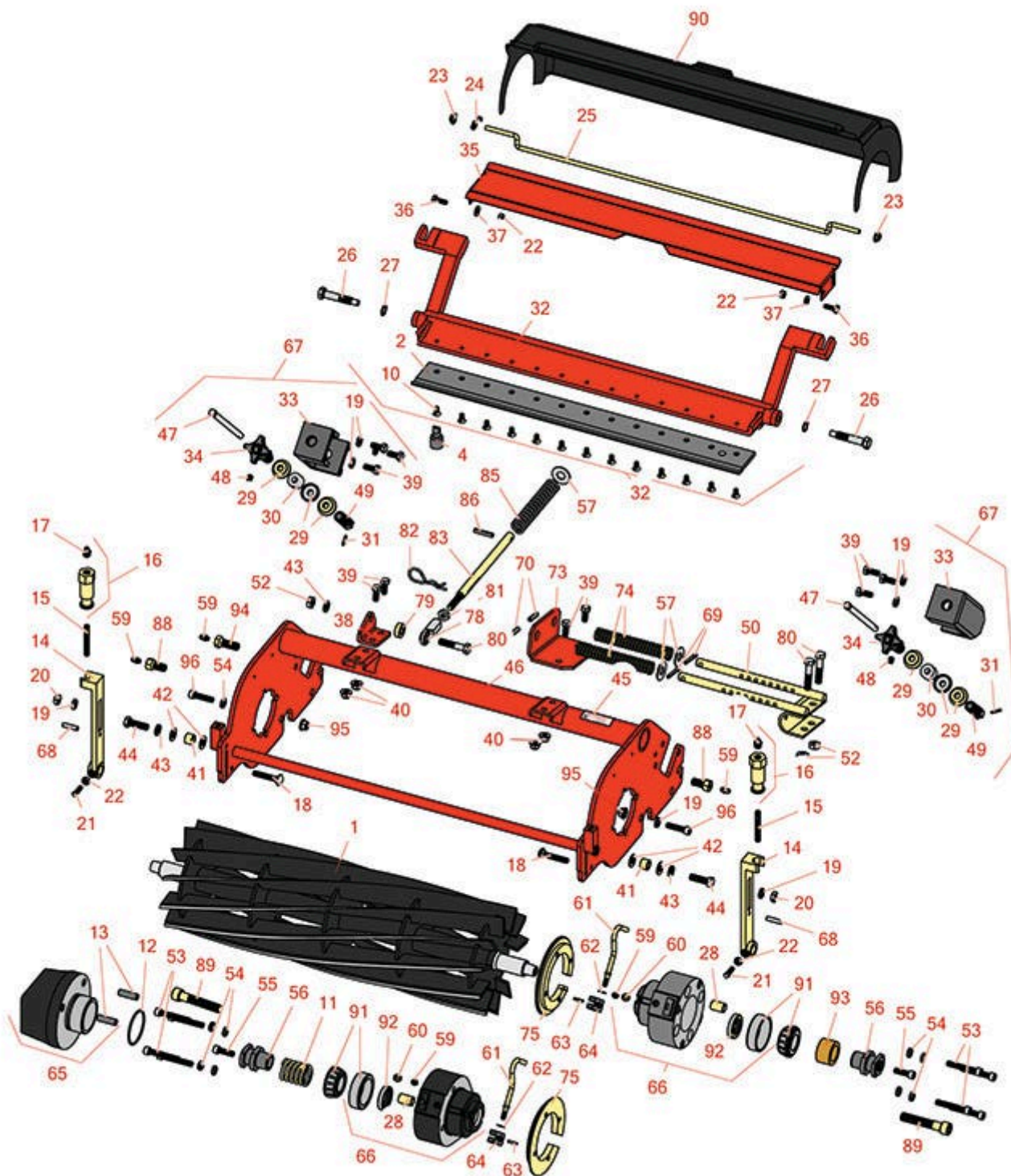


## Replaces Jacobsen LF-3400 Parts

## 7" Reel Units

## Reel & Bedknife



All original equipment manufacturers names and part numbers are used for identification purposes only, and we are in no way implying that our products are original equipment parts. Prices subject to change without notice.



# Replaces Jacobsen LF-3400 Parts

7" Reel Units

Reel & Bedknife



Item R&R

No Part No.

OEM

Part No.

Description

Qty

Req

Order

Quantity

## R&R Reels, Lifetime Guaranteed

Item No	R&R Part No.	OEM Part No.	Description	Qty Req	Order Quantity
1	R101329		Reel - 7 Blade	1	
<p><i>Detail Description:</i> R&amp;R Reel blades are manufactured from high carbon-boron alloy steel and then hardened to RC46-49 to match the temper of our bedknives and original equipment bedknives. All R&amp;R Reels are cylindrically ground on bearing surfaces and then relief ground. Reels are then precision computer balanced for extended bearing and reel life. R&amp;R Products Reels are guaranteed against defects in material and workmanship for the life of the reel under normal use.:</p>					
1	R5002476	5002476	Reel - 9 Blade	1	
<p><i>Detail Description:</i> R&amp;R Reel blades are expertly crafted from premium high carbon-boron alloy steel, heat-treated to perfectly complement both R&amp;R and OEM bedknives. Each reel undergoes precision cylindrical grinding on bearing surfaces, followed by relief grinding for optimal performance. Advanced computer balancing ensures extended reel and bearing life. Backed by our lifetime guarantee against defects in materials and craftsmanship under normal use, R&amp;R Reels deliver unmatched durability and cutting precision you can trust.:</p>					
1	R2810471	2810471	Reel - 9 Blade	1	
<p><i>Detail Description:</i> R&amp;R Reel blades are expertly crafted from premium high carbon-boron alloy steel, heat-treated to perfectly complement both R&amp;R and OEM bedknives. Each reel undergoes precision cylindrical grinding on bearing surfaces, followed by relief grinding for optimal performance. Advanced computer balancing ensures extended reel and bearing life. Backed by our lifetime guarantee against defects in materials and craftsmanship under normal use, R&amp;R Reels deliver unmatched durability and cutting precision you can trust.:</p>					
1	R5002762	2810472, 5002762	Reel - 11 Blade	1	
<p><i>Detail Description:</i> R&amp;R Reel blades are expertly crafted from premium high carbon-boron alloy steel, heat-treated to perfectly complement both R&amp;R and OEM bedknives. Each reel undergoes precision cylindrical grinding on bearing surfaces, followed by relief grinding for optimal performance. Advanced computer balancing ensures extended reel and bearing life. Backed by our lifetime guarantee against defects in materials and craftsmanship under normal use, R&amp;R Reels deliver unmatched durability and cutting precision you can trust.:</p>					

## R&R Bedknives, Lifetime Guaranteed

2	R5003150	5003150	Bedknife - Low Cut	1	
---	----------	---------	--------------------	---	--

All original equipment manufacturers names and part numbers are used for identification purposes only, and we are in no way implying that our products are original equipment parts. Prices subject to change without notice.



## Replaces Jacobsen LF-3400 Parts

7" Reel Units

Reel & Bedknife



Item No	R&R Part No.	OEM Part No.	Description	Qty Req	Order Quantity
---------	--------------	--------------	-------------	---------	----------------

*Detail Description: R&R Bedknives are manufactured from high carbon-boron alloy steel and then hardened to RC46-49 to match the temper of our reel blades and original equipment reels. Bedknives are surface ground on the top and front edge and straightened three times before being packaged with oil for rust prevention. All R&R Bedknives now have an increased front edge grind for added life. All R&R Bedknives are guaranteed against defects in material and workmanship under normal use for the life of the part.:*

2	<b>R503460</b>	503257, 503460	Bedknife - 22 in 13 Hole	1	
---	----------------	-------------------	--------------------------	---	--

*Detail Description: R&R Bedknives are manufactured from high carbon-boron alloy steel and then hardened to RC46-49 to match the temper of our reel blades and original equipment reels. Bedknives are surface ground on the top and front edge and straightened three times before being packaged with oil for rust prevention. All R&R Bedknives now have an increased front edge grind for added life. All R&R Bedknives are guaranteed against defects in material and workmanship under normal use for the life of the part.:*

### R&R Razor Tool Steel Bedknives, Lifetime Guaranteed

2	<b>R101523</b>		Bedknife - Razor Tool Steel - 22 High Cut	1	
---	----------------	--	---	---	--

*Detail Description: R&R Razor bedknives are manufactured from premium alloy tool steel steel and then hardened to RC48-51 to match the temper of our Razor reel blades and original equipment premium series reels. Bedknives are surface ground on the top and front edge and specially packaged for rust prevention. All R&R Bedknives now have an increased front edge grind for added life. All R&R Bedknives are guaranteed against defects in material and workmanship under normal use for the life of the part. You can expect up to double the life over standard bedknives.:*

### Service Tools

4	<b>R101272T</b>		Bedknife Screw Driver Tool	0	
---	-----------------	--	----------------------------	---	--

*Tech Note: Easily install and remove bed knife screws with the help of a ratchet. Tool manufactured with hardened alloy steel.:*

*Detail Description: Easily install and remove bed knife screws with the help of a ratchet. Tool manufactured with hardened alloy steel.:*

### Other Parts Available

10	<b>R101272</b>	101272, 3009138, 402578, 800813	Screw - Bedknife 1/4-20 x 1/2	13	
----	----------------	--	-------------------------------	----	--

All original equipment manufacturers names and part numbers are used for identification purposes only, and we are in no way implying that our products are original equipment parts. Prices subject to change without notice.



## Replaces Jacobsen LF-3400 Parts

7" Reel Units

Reel & Bedknife



Item No	R&R Part No.	OEM Part No.	Description	Qty Req	Order Quantity
11	R3004734	3004734	Spring - Compression	1	
12	R3006021	3006021	O-Ring	1	
13	R3006022	3006022	Pin - Hardened Counter Balance	2	
14	R3004738	3004738	Adjuster - Front Roller	2	
15	R343616	343616, 443102	Stud	2	
16	R365009	3005692, 365009, 365170, 441674	Knob - Adjusting Roller	2	
17	R471219	366852, 471219	Zerk - Grease	2	
18	R441674	441674	Screw - 5/16-18 x 1-3/4 Carriage	2	
19	R446136	446134, 446136	Washer - Lock 5/16 Zinc	2	
20	R443106	443106	Nut - 5/16-18 Y/Zinc Plated	2	
21	R352737	352737	Screw - Set 1/4 x 7/8 Sq Head	2	
22	R443102	443102	Nut - 1/4-20 Yellow Zinc	4	
23	R445525	445525	Nut - 1/4 Pal	2	
24	R3009281	3009281	Spring - Torsion 22 Roller	1	
24	R3005267	3005267	Spring - Torsion 24 Roller	1	
25	R3009280	3009280	Scraper - 22 Rear Roller (Rod)	1	
26	R347169	347169, 365501	Stud - Backing RH 2-5/16	2	
27	R454017	454017	Shim - Bed Bar Bolt	2	
28	R545940	2500759, 545940	Bushing	2	

All original equipment manufacturers names and part numbers are used for identification purposes only, and we are in no way implying that our products are original equipment parts. Prices subject to change without notice.



## Replaces Jacobsen LF-3400 Parts

7" Reel Units

Reel & Bedknife



Item No	R&R Part No.	OEM Part No.	Description	Qty Req	Order Quantity
29	<b>R3009892</b>	3009075, 3009892	Spacer - Cup	6	
30	<b>R3010470</b>	3008946, 3010470	Spring - Urethane	2	
31	<b>R460026</b>	460026	Pin - Cotter 1/8 x 3/4	2	
32	<b>R1002556</b>	1002556	Bedknife/Bedbar Assy	1	
<i>Tech Note: w/ R503257 Bedknife:</i>					
<i>Detail Description: R&amp;R Bedknives are manufactured from high carbon-boron alloy steel and then hardened to RC46-49 to match the temper of our reel blades and original equipment reels. Bedknives are surface ground on the top and front edge and straightened three times before being packaged with oil for rust prevention. All R&amp;R Bedknives now have an increased front edge grind for added life. All R&amp;R Bedknives are guaranteed against defects in material and workmanship under normal use for the life of the part.:</i>					
32	<b>R1003934</b>	1003934	Bedknife/Bedbar Assy	1	
<i>Tech Note: W/ R5003150 Bedknife:</i>					
<i>Detail Description: R&amp;R Bedknives are manufactured from high carbon-boron alloy steel and then hardened to RC46-49 to match the temper of our reel blades and original equipment reels. Bedknives are surface ground on the top and front edge and straightened three times before being packaged with oil for rust prevention. All R&amp;R Bedknives now have an increased front edge grind for added life. All R&amp;R Bedknives are guaranteed against defects in material and workmanship under normal use for the life of the part.:</i>					
33	<b>R3004795</b>	3004795	Housing - Bed Knife Adj	1	
34	<b>R2000125</b>	2000125, 2000215	Knob, Bedknife Adj.	2	
35	<b>R3006248</b>	3006248	Deflector	1	
36	<b>R321-4</b>	321-4, 400108	Bolt - Hex HD 1/4-20 x 3/4	2	
37	<b>R453023</b>	453023	Washer - Flat 1/4	2	
38	<b>R3008601</b>	3008601	Bracket - Spring Holddown	1	
39	<b>R400184</b>	400184, 400194	Screw - 5/16-18 x 3/4 Hex	2	

All original equipment manufacturers names and part numbers are used for identification purposes only, and we are in no way implying that our products are original equipment parts. Prices subject to change without notice.



## Replaces Jacobsen LF-3400 Parts

7" Reel Units

Reel & Bedknife



Item No	R&R Part No.	OEM Part No.	Description	Qty Req	Order Quantity
40	R445722	445722	Nut - Serrated Washer	2	
41	R3006290	3006290	Spacer - Hardened	2	
42	R453011	453011	Washer - Flat 3/8 SAE Y/Zinc	4	
43	R3254-6	3254-6, 446140, 446142	Washer - Lock 3/8	2	
44	R400264	400264	Bolt - Hex HD 3/8-16 x 1-1/4	2	
45	R354083	354083, 361877, 4127335	Decal - Danger	2	
46	R5002609	5002609	Frame	1	
47	R3010472	3004798, 3010472	Rod - Bedknife Adj	2	
48	R422511	422511	Screw - Set w/Nylon Plug	2	
49	R3010471	3004799, 3009894, 3010471	Bolt - Special	2	
50	R1002682	1002682	Support - Down Pressure Spr	1	
52	R443110	306562, 443110, 444762	Nut - 3/8-16 Hex	2	
53	R434049	434049	Bolt - Soc HD Cap 5/16-18 x 2	8	
54	R362643	362643	Spacer - Brg Housing	8	
55	R434004	434003, 434004	Screw - Soc HD 5/16-18 x 1	2	
56	R4166860	3004737, 3010046, 4166860	Coupler	2	

All original equipment manufacturers names and part numbers are used for identification purposes only, and we are in no way implying that our products are original equipment parts. Prices subject to change without notice.



# Replaces Jacobsen LF-3400 Parts

7" Reel Units

Reel & Bedknife



Item No	R&R Part No.	OEM Part No.	Description	Qty Req	Order Quantity
57	<b>R453017</b>	452012, 453017	Washer - Flat 1/2	2	
59	<b>R302-5</b>	302-5, 471214, 471223, 471226	Fitting - Grease	2	
60	<b>R170714</b>	170714, 471240, 471242	Fitting - Pressure Relief	2	
61	<b>R3006028</b>	3006028	Rod	2	
62	<b>R455066</b>	455066	Washer - M6 Flat	2	
63	<b>R012419</b>	461357, 461359	Pin - Roll 1/8 x 3/4	2	
64	<b>R4130092</b>	4130092	Block - Clamp	2	
65	<b>R2000135</b>	2000135	Casting - Weight - Counter Balance	1	
66	<b>R1002811</b>	1002811	Bearing Housing Assy	2	
67	<b>R1002532</b>	1002532	Adjusting Assy - Bedknife	2	
68	<b>R461256</b>	461256	Pin - 1/4 x 1	2	
69	<b>R460050</b>	460050	Pin - Cotter 3/16 x 1-1/4	2	
70	<b>R461387</b>	461387	Pin - Spring Roll 1/4 x 1	2	
73	<b>R365162</b>	365162	Bracket	1	
74	<b>R365165</b>	365165	Spring - Compression	2	
75	<b>R3005210</b>	3005210	Ring - Retaining	1	
78	<b>R366974</b>	366974	Bearing - Rod End	1	
79	<b>R352435</b>	352435	Spacer	1	
80	<b>R400266</b>	400266	Bolt - Hex HD 3/8-16 x 1-1/2	1	

All original equipment manufacturers names and part numbers are used for identification purposes only, and we are in no way implying that our products are original equipment parts. Prices subject to change without notice.





## Replaces Jacobsen LF-3400 Parts

7" Reel Units

Reel & Bedknife



Item No	R&R Part No.	OEM Part No.	Description	Qty Req	Order Quantity
80	<b>R400268</b>	400268	Bolt - Hex HD 3/8-16 x 1-3/4	1	
81	<b>R3219-3</b>	3219-3, 443112, 443812	Nut - 3/8-24	1	
82	<b>R460312</b>	460312	Pin - Hair Cotter	1	
83	<b>R3008593</b>	3008593	Shaft - Down Pressure	1	
85	<b>R311870</b>	311870	Spring - Compression	1	
86	<b>R461397</b>	461397	Pin - Roll 1/4 x 1-1/4	1	
88	<b>R345470</b>	1002226, 345470	Bolt - Rear Roller 7/16-20	2	
<i>Detail Description: Incl. Grease Zerk:</i>					
89	<b>R434039</b>	434039	Bolt - Hex Soc HD 1/2-13 x 2 3/4	2	
90	<b>R3005209</b>	3005209	Shield - Grass	1	
91	<b>R5002477</b>	5002477	Bearing - w/Cup	2	
92	<b>R3006030</b>	3006030	Seal	2	
93	<b>R3004800</b>	3004800	Spacer - Hardened Reel	1	
94	<b>R163568</b>	163568	Bolt - Grease	2	
95	<b>R445795</b>	445795	Nut - 5/16-18 Flanged	2	
96	<b>R434036</b>	434036	Screw - Soc HD 5/16-18 x 1-1/4	2	

All original equipment manufacturers names and part numbers are used for identification purposes only, and we are in no way implying that our products are original equipment parts. Prices subject to change without notice.