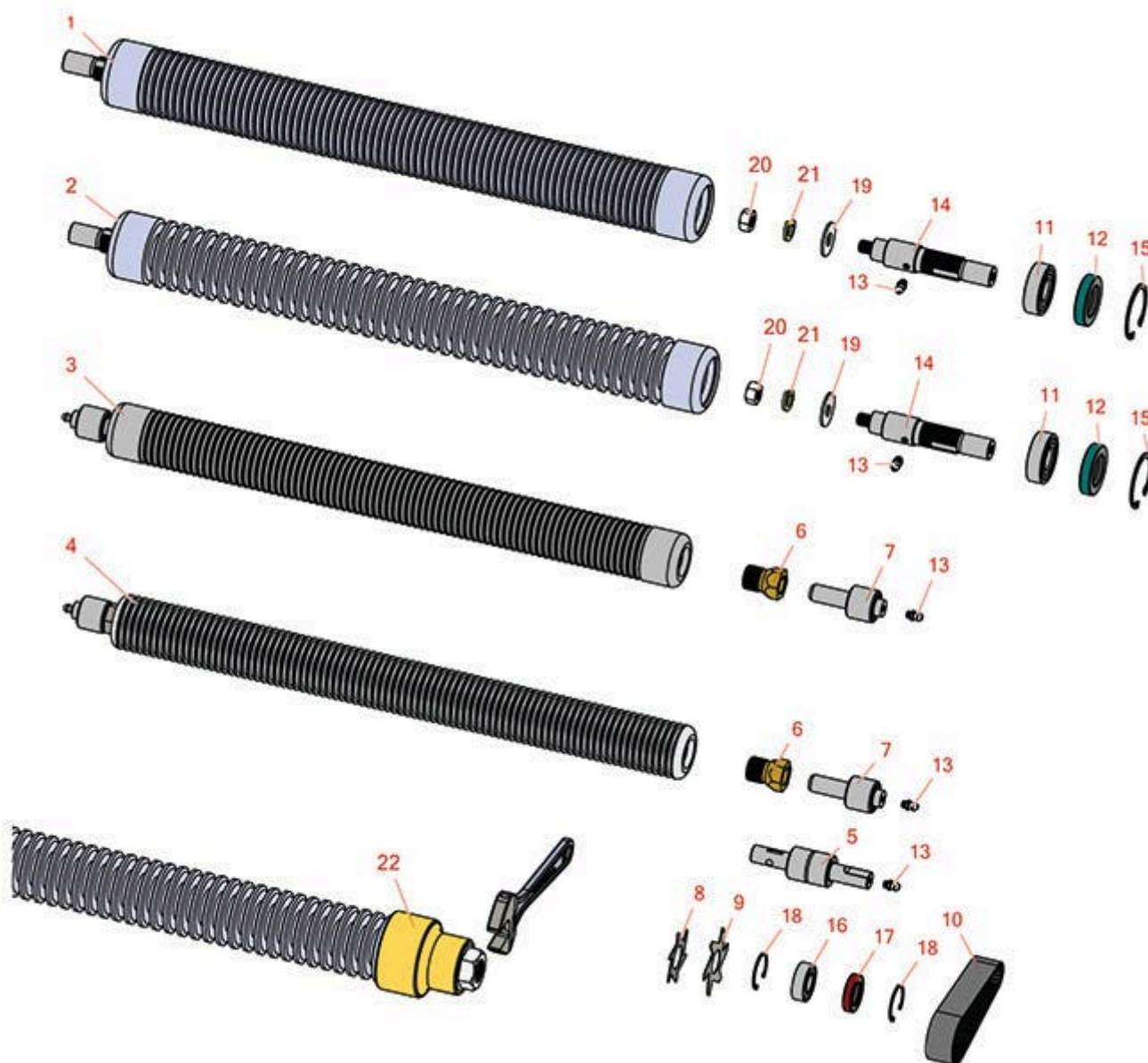




Replaces Jacobsen PGM 22 Parts

Cutting Unit
Groomer Roller



All original equipment manufacturers names and part numbers are used for identification purposes only, and we are in no way implying that our products are original equipment parts. Prices subject to change without notice.



Replaces Jacobsen PGM 22 Parts

Cutting Unit
Groomer Roller



Item No	R&R Part No.	OEM Part No.	Description	Qty Req	Order Quantity
Groomer Roller Parts					
1	R390899	390899	Roller Tube - Grooved 2.5 x 22 - 1/4 in Spacing	1	
<i>Detail Description: Note: W/ 1/4 Spacing:</i>					
2	R390900	390900	Roller - Grooved 2-1/2 x 22	1	
<i>Detail Description: Note: w/ 1/2 Spacing:</i>					
3	R131927	131927	Roller - Grooved Machined Aluminum	1	
<i>Detail Description: Includes Bearing & Collar:</i>					
3	R131959	131959	Groomer Roller - Grooved Machined Aluminum	1	
<i>Detail Description: 2" DIA. 19" Long. Includes Bearing & Collar:</i>					
4	R338485	338485	Roller Tube Only - Grooved Machined Aluminum	1	
4	R338519	338519	Groomer Roller - Grooved Machined Aluminum	1	
5	R554571	554571	Bearing	2	
6	R364541	364541	Collar - Locking	2	
7	R554570	554570	Bearing - w/Zerk Fits Groomer	2	
8	R363808	363808	Blade - V-Cut 2 Dia	85	
9	R365230	365230	Verti-Cut Blade - 2-1/2 Dia.	85	
10	R363806	363806	Belt - Fits Turf Groomer	1	
10	R365235	365235	Belt - Timing Fits 2-1/2 Groomers	1	
11	R365330	365330	Bearing	2	
12	R338773	338773	Seal	2	

All original equipment manufacturers names and part numbers are used for identification purposes only, and we are in no way implying that our products are original equipment parts. Prices subject to change without notice.



Replaces Jacobsen PGM 22 Parts

Cutting Unit
Groomer Roller



Item No	R&R Part No.	OEM Part No.	Description	Qty Req	Order Quantity
13	R302-5	302-5, 471214, 471223, 471226	Fitting - Grease	2	
14	R338772	338772	Shaft - Roller - RH	2	
15	R458113	458113	Ring - Snap Fits Groomer	2	
16	R365229	365229	Bearing	2	
17	R336962	336962	Seal	2	
18	R458461	458461	Snap Ring	4	
19	R453013	452008, 453013	Washer - Flat 7/16	2	
20	R443816	443816	Nut - 7/16-20 Hex Jam	2	
21	R446146	446146, 446148	Lock Washer - 7/16	2	
22	R262		Bearing Puller - Fits Groomer Roller	1	

Tech Note: Excellent tool to quickly remove bearings and shafts from R390899 and R390900 groomer rollers. Puller Fits Jacobsen & R&R 2-1/2" Groomer Rollers:

Detail Description: R&R Products developed a special line of tools to remove tapered bearing races from rollers, gear boxes and the outer ball bearing races left inside roller ends, in case of a catastrophic bearing failure. The R&R Puller contains a mandrel and spreader which secures behind the tapered bearing race or to the inside ball bearing groove. The tube assembly, which contains its own tapered bearing pulling system, is then placed over the mandrel and spreader to easily remove the outer race. Mandrels and spreaders are manufactured by R&R Products from high carbon chromium vanadium steel and heat treated for maximum strength.:

All original equipment manufacturers names and part numbers are used for identification purposes only, and we are in no way implying that our products are original equipment parts. Prices subject to change without notice.