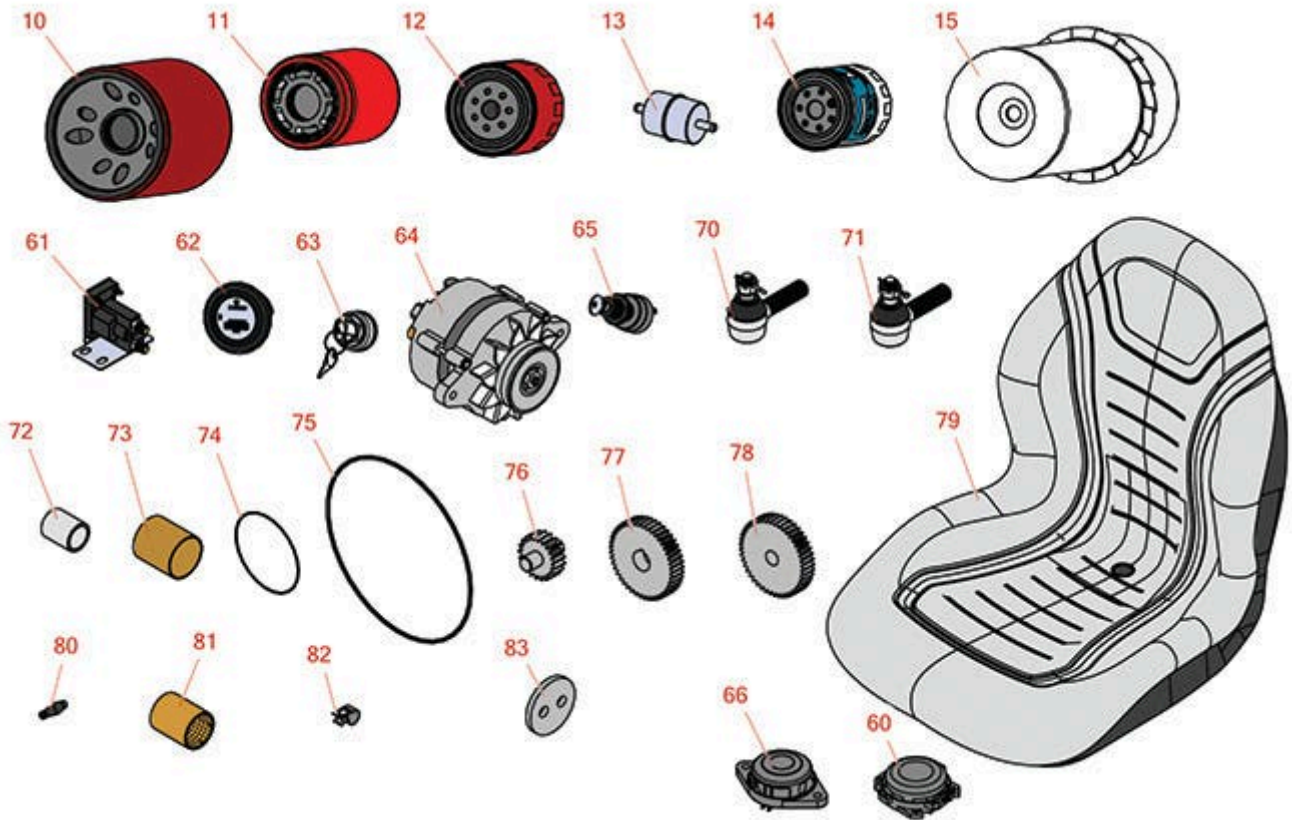




# Replaces Jacobsen ST-5111 Parts

Traction Unit  
Traction Unit



All original equipment manufacturers names and part numbers are used for identification purposes only, and we are in no way implying that our products are original equipment parts. Prices subject to change without notice.



# Replaces Jacobsen ST-5111 Parts

Traction Unit

Traction Unit



Item R&R  
No Part No.

OEM  
Part No. Description

Qty  
Req

Order  
Quantity

## Filters

10	<b>R74-3570</b>	555771	Baldwin Oil Filter - Hyd 10 Micron	1
10	<b>RRF10615</b>		SilverGuard Oil Filter	1
11	<b>R556418</b>	2811255, 556418	Baldwin Oil Filter - Hydraulic	1
11	<b>RRF10627</b>	2811255, 556418	SilverGuard Oil Filter - Hydraulic	1
12	<b>R555773</b>	350993, 555773	Baldwin Oil Filter	1
13	<b>RRF10520</b>		SilverGuard Fuel Filter	1
13	<b>R18-1520</b>	5001182	Baldwin Fuel Filter	1
14	<b>RRF10530</b>		SilverGuard Fuel Filter	1
14	<b>RX1663143560</b>	557619	Kubota Filter - Fuel	1
15	<b>R549633</b>	549633	Baldwin Filter - Air Element	1
15	<b>RRF10203</b>	549633	SilverGuard Filter - Air Element	1

## Gauges and Controls

60	<b>R151541</b>		Delta Seat Switch - Twist Mount 1 Pole Normally Open	1
61	<b>R131905</b>	126070, 131905	Solenoid - Starter	1
62	<b>R162723</b>	162723, 358825	Meter - Hour	1
63	<b>R27-2360</b>	1000348, 131095	Switch - Key 6 Lead 9/16 Mount	1
64	<b>RX1576364010</b>	5000938	Kubota Alternator 35 Amp	1
65	<b>R1004316</b>	132857	Switch - Ignition	1
66	<b>R92-6282</b>	554390	Switch - Kill - Seat	1

All original equipment manufacturers names and part numbers are used for identification purposes only, and we are in no way implying that our products are original equipment parts. Prices subject to change without notice.



# Replaces Jacobsen ST-5111 Parts

Traction Unit

Traction Unit



Item R&R  
No Part No.

OEM  
Part No. Description

Qty  
Req

Order  
Quantity

## Other Parts Available

70	<b>R153196</b>	153196	End - Tie Rod RH	1
71	<b>R153197</b>	153197	End - Tie Rod LH	1
72	<b>R315296</b>	315296	Bushing - Pivot Housing	2
73	<b>R342049</b>	342049	Bushing - Formed 1.75 x 1.875 x 2	8
74	<b>R363034</b>	363034	O-Ring - Seal Reel Motor	1
75	<b>R365570</b>	365570	O-Ring - Seal Gear Cover	1
76	<b>R163832</b>	163832	Gear - Idler 21 Teeth	1
77	<b>R337390</b>	337390	Gear - Reel	1
78	<b>R162693</b>	162693	Gear - Idler 45 Teeth	1
79	<b>RMXB200GY</b>	1001774, 66172	Milsco Seat XB200 - Grey	1
<i>Tech Note: This seat will not accept seat belts:</i>				
80	<b>R232-27</b>	232-27, 360111	Stem - Valve w/ Cap	1
81	<b>R550344</b>	342022, 550344	Bushing - Formed 1.5 x 1.625 x 2	1
82	<b>R345666</b>	345666	Clamp	2
83	<b>R342028</b>	342028	End Cap	1

All original equipment manufacturers names and part numbers are used for identification purposes only, and we are in no way implying that our products are original equipment parts. Prices subject to change without notice.