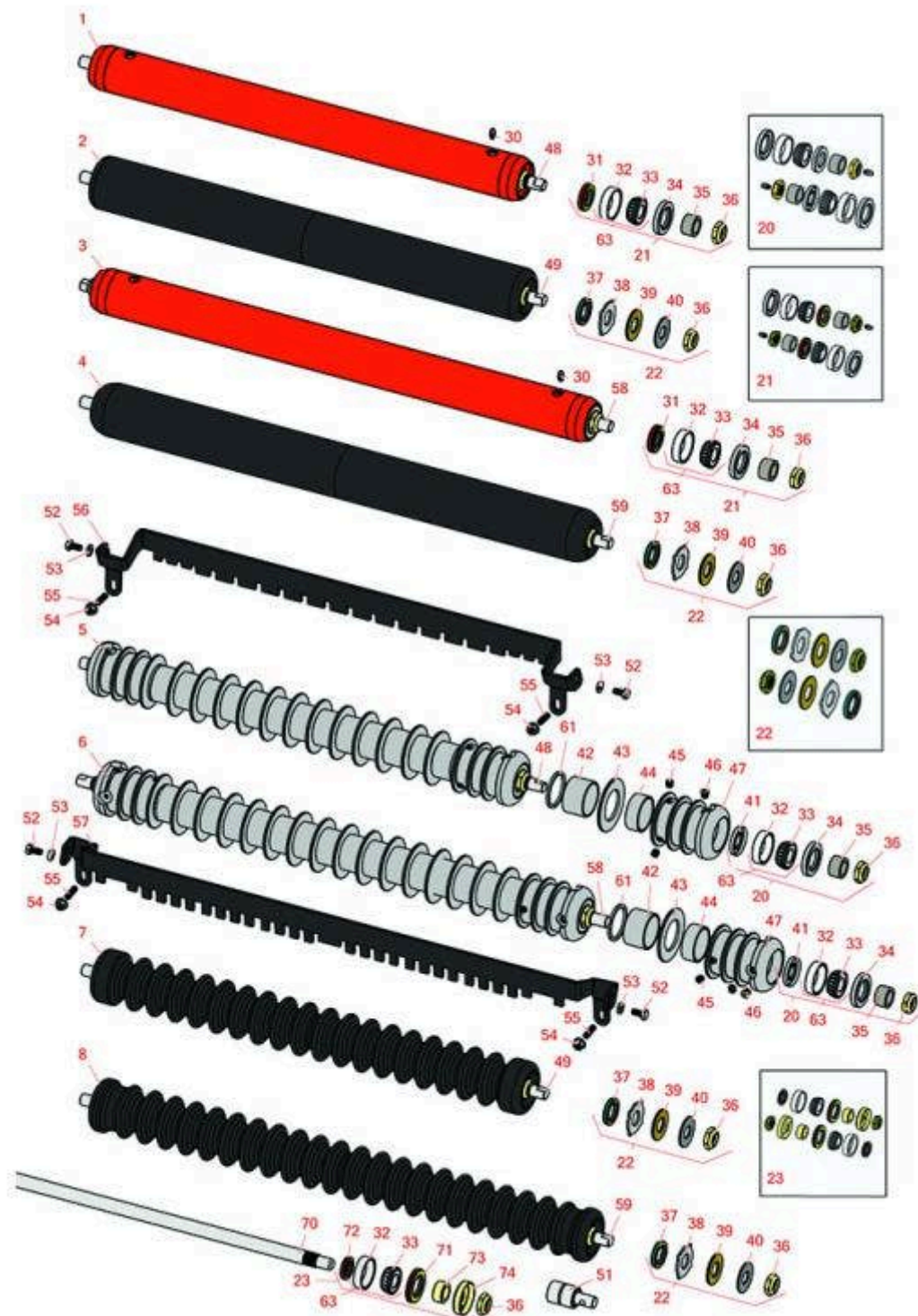




Replaces Jacobsen Tri-King 1671D Parts

26" & 30" Cutting Unit
Rollers



All original equipment manufacturers names and part numbers are used for identification purposes only, and we are in no way implying that our products are original equipment parts. Prices subject to change without notice.



Replaces Jacobsen Tri-King 1671D Parts

26" & 30" Cutting Unit Rollers



| Item No | R&R Part No. | OEM Part No. | Description | Qty Req | Order Quantity |
|---------|--------------|--------------|-------------|---------|----------------|
|---------|--------------|--------------|-------------|---------|----------------|

R&R Rollers

| | | | | | |
|---|----------------|------------------------------|-------------------------------|---|--|
| 1 | R104125 | 116940, 131863, 132639 | Roller - Smooth Tubular Steel | 0 | |
|---|----------------|------------------------------|-------------------------------|---|--|

Tech Note: Fits 26" Unit:

Detail Description: Constructed with a through shaft, this heavy duty roller uses greasable tapered bearings for extended life.:

| | | | | | |
|---|-----------------|--|-----------------------------------|---|--|
| 2 | R1013630 | | Roller - Smooth UHMW Polyethylene | 0 | |
|---|-----------------|--|-----------------------------------|---|--|

Tech Note: Fits 26" Unit:

Detail Description: Machined from solid UHMW, this low maintenance roller uses a 1" solid stainless steel shaft and requires no grease. UHMW material prevents build-up of debris.:

| | | | | | |
|---|----------------|-------------------|-------------------------------|---|--|
| 3 | R104130 | 116933, 132640 | Roller - Smooth Tubular Steel | 0 | |
|---|----------------|-------------------|-------------------------------|---|--|

Tech Note: Fits 30" Unit:

Detail Description: Constructed with a through shaft, this heavy duty roller uses greasable tapered bearings for extended life.:

| | | | | | |
|---|-----------------|--|--------------------------------------|---|--|
| 4 | R1013650 | | Roller - Smooth UHMW Polyethylene 30 | 0 | |
|---|-----------------|--|--------------------------------------|---|--|

Tech Note: Fits 30" Unit:

Detail Description: Machined from solid UHMW, this low maintenance roller rotates around a 1" solid stainless steel shaft and requires no bearings or grease. Patented groove design and smooth UHMW material prevents build-up of debris.:

| | | | | | |
|---|----------------|-------------------|--|---|--|
| 5 | R104100 | 116906, 123266 | Roller - Grooved Repairable Steel - 26 | 0 | |
|---|----------------|-------------------|--|---|--|

Tech Note: Fits 26" Unit:

Detail Description: Constructed with a through shaft and greasable ball bearings, this roller can be repaired by unscrewing the ends and replacing the series of washers and spacers.:

All original equipment manufacturers names and part numbers are used for identification purposes only, and we are in no way implying that our products are original equipment parts. Prices subject to change without notice.



Replaces Jacobsen Tri-King 1671D Parts

26" & 30" Cutting Unit
Rollers



| Item No | R&R Part No. | OEM Part No. | Description | Qty Req | Order Quantity |
|---------|--------------|--------------|-------------|---------|----------------|
|---------|--------------|--------------|-------------|---------|----------------|

| | | | | | |
|---|----------------|------------------|--|---|--|
| 6 | R104115 | 123265, 67729 | Roller - Grooved Repairable Steel - 30 | 0 | |
|---|----------------|------------------|--|---|--|

Tech Note: Fits 30" Unit:

Detail Description: Constructed with a through shaft and greasable ball bearings, this roller can be repaired by unscrewing the ends and replacing the series of washers and spacers.:

| | | | | | |
|---|-----------------|--------|------------------------------------|---|--|
| 7 | R1013620 | 123266 | Roller - Grooved UHMW Polyethylene | 0 | |
|---|-----------------|--------|------------------------------------|---|--|

Tech Note: Fits 26" Unit:

Detail Description: Machined from solid UHMW, this low maintenance roller rotates around a 1" solid stainless steel shaft and requires no bearings or grease. Patented groove design and smooth UHMW material prevents build-up of debris.:

| | | | | | |
|---|-----------------|--------|---|---|--|
| 8 | R1013640 | 123265 | Roller - Grooved UHMW Polyethylene - 30 | 0 | |
|---|-----------------|--------|---|---|--|

Tech Note: Fits 30" Unit:

Detail Description: Machined from solid UHMW, this low maintenance roller rotates around a 1" solid stainless steel shaft and requires no bearings or grease. Patented groove design and smooth UHMW material prevents build-up of debris.:

Overhaul Kits

| | | | | | |
|----|----------------|--|-----------------------|---|--|
| 20 | R100137 | | Overhaul Kit - Roller | 0 | |
|----|----------------|--|-----------------------|---|--|

Detail Description: Includes 2 ea.: R3296-15 Locknuts, R302-5 Grease Fittings, R253-122 Seals, R253-117 Seals, R5-4038 Wear Sleeves, R254-78 Bearings & R254-79 Bearing Cups:

| | | | | | |
|----|----------------|--|-----------------------|---|--|
| 21 | R100138 | | Overhaul Kit - Roller | 0 | |
|----|----------------|--|-----------------------|---|--|

Detail Description: Includes 2 ea.: R3296-15 Locknuts, R253-152 Seals, R253-117 Seals, R5-4038 Wear Sleeves, R254-78 Bearings, R254-79 Bearing Cups, & R302-5 Grease Fittings:

| | | | | | |
|----|----------------|--|---------------------------------|---|--|
| 22 | R101399 | | Overhaul Kit - UHMW 2 Pc Roller | 1 | |
|----|----------------|--|---------------------------------|---|--|

Detail Description: Fits all R&R 2-1/2" - 3-1/2" Dia. Black UHMW Plastic Rollers that do not use ball bearings.. Includes 2 ea.: R1503230 Star Washers, R1503470 Seals, R150333 Thrust Washers, R3296-15 Locknuts, R1503471 Bronze Thrust Washers:

All original equipment manufacturers names and part numbers are used for identification purposes only, and we are in no way implying that our products are original equipment parts. Prices subject to change without notice.



Replaces Jacobsen Tri-King 1671D Parts

26" & 30" Cutting Unit
Rollers



| Item No | R&R Part No. | OEM Part No. | Description | Qty Req | Order Quantity |
|--|-----------------|---|-------------------------------|---------|----------------|
| 23 | R100133 | | Overhaul Kit - Roller | 1 | |
| <i>Detail Description: Includes: 2ea: R254-78 Bearings, R254-79 Bearing Cups, R3296-15 Locknuts, R338645 Cup Deflectors, R338646 Seals, R338647 Seals, & R366168 Wear Sleeves:</i> | | | | | |
| Other Parts Available | | | | | |
| 30 | R302-5 | 302-5, 471214, 471223, 471226 | Fitting - Grease | 2 | |
| 31 | R253-152 | 3001656 | Seal - Inner Roller | 2 | |
| 32 | R254-79 | 254-79, 4121175 | Cup - Bearing | 2 | |
| <i>Detail Description: Use R254-79M installation mandrel to properly install race.:</i> | | | | | |
| 33 | R254-78 | 254-78, 385174, 4121174, 4135152 | Tapered Bearing Cone | 2 | |
| 34 | R253-117 | 253-117, 3004882 | Seal - Outer Triple Lip | 2 | |
| 35 | R5-4038 | 5-4038 | Sleeve - Wear Reel Shaft | 2 | |
| 36 | R3296-15 | 3296-15, 367029, 444742 | Locknut - 3/4-16 Nylon Jam | 2 | |
| 37 | R1503470 | | Seal - Inner Wiper | 2 | |
| 38 | R1503230 | | Washer - Thrust Outer Keyed | 2 | |
| 39 | R1503471 | | Washer - Thrust SAE660 Bronze | 2 | |
| 40 | R150333 | | Washer - Flat Keyed Outer SS | 2 | |
| 41 | R253-122 | | Seal | 2 | |
| 42 | R150676 | 150676 | Spacer - 2-3/4 Dia x 1-1/4 L | 0 | |

All original equipment manufacturers names and part numbers are used for identification purposes only, and we are in no way implying that our products are original equipment parts. Prices subject to change without notice.



Replaces Jacobsen Tri-King 1671D Parts

26" & 30" Cutting Unit
Rollers



| Item No | R&R Part No. | OEM Part No. | Description | Qty Req | Order Quantity |
|---------|--------------|------------------------------|--------------------------------|---------|----------------|
| 43 | R150673 | 150673 | Washer - 3 Repairable Roller | 0 | |
| 44 | R150678 | | Spacer - Grooved Roller 3/4 | 2 | |
| 45 | R150691 | | Screw - Set Nyloc 3/8-16 x 3/8 | 4 | |
| 46 | R170714 | 170714, 471240, 471242 | Fitting - Pressure Relief | 2 | |
| 47 | R100103 | | Roller End - Grooved | 2 | |
| 48 | R104102 | | Shaft - 26 Roller | 1 | |
| 49 | R1013810 | | Shaft - 1 SS Roller | 1 | |
| 51 | R75-1290 | 75-1290 | Bearing - Roller | 2 | |
| 52 | R400182 | 400182 | Bolt - Hex HD 5/16-18 x 5/8 | 2 | |
| 53 | R446136 | 446134, 446136 | Washer - Lock 5/16 Zinc | 2 | |
| 54 | R445781 | 445781 | Nut - 5/16-18 Whiz | 2 | |
| 55 | R415559 | 415559 | Screw - Set 5/16-18 x 1 | 2 | |
| 56 | R3001706 | 3001706 | Scraper - 26 Grooved Roller | 1 | |
| 56 | R700508 | | Scraper - 26 Grooved Roller | 1 | |
| 57 | R3003811 | 3003811 | Scraper - 30 Grooved Roller | 1 | |
| 57 | R700509 | | Scraper - 30 Grooved Roller | 1 | |
| 58 | R104117 | | Shaft - 30 Roller | 1 | |
| 59 | R1013820 | | Shaft - 1 SS Roller 2 Pc | 1 | |
| 61 | R150676A | | Spacer - 1/8 | 4 | |
| 63 | R500534 | 500534, R500534 | Bearing - with Cup | 2 | |

All original equipment manufacturers names and part numbers are used for identification purposes only, and we are in no way implying that our products are original equipment parts. Prices subject to change without notice.



Replaces Jacobsen Tri-King 1671D Parts

26" & 30" Cutting Unit
Rollers



| Item No | R&R Part No. | OEM Part No. | Description | Qty Req | Order Quantity |
|---------|--------------|--------------|-------------|---------|----------------|
|---------|--------------|--------------|-------------|---------|----------------|

Detail Description: Kit includes: 1 ea R254-78- Bearing Cone & R254-79 Bearing Cone:

Replaces Jacobsen 30" 132640 Solid Roller & 1000384 Grooved Roller Parts

| | | | | |
|----|----------------|-------------------|-------------------------|---|
| 70 | R366587 | 366587 | Shaft - Solid 30 Roller | 1 |
| 70 | R104109 | | Shaft - 30 Solid Roller | 1 |
| 70 | R366588 | 366588 | Shaft - 26 Roller | 1 |
| 70 | R104108 | | Shaft - 26 Solid Roller | 1 |
| 71 | R338646 | 338646 | Seal - Outer Roller | 2 |
| 72 | R338647 | 338647 | Seal - Inner Roller | 2 |
| 73 | R366168 | 336168, 366168 | Sleeve - Wear Hardened | 2 |
| 74 | R338645 | 338645 | Deflector - Cup | 2 |

All original equipment manufacturers names and part numbers are used for identification purposes only, and we are in no way implying that our products are original equipment parts. Prices subject to change without notice.