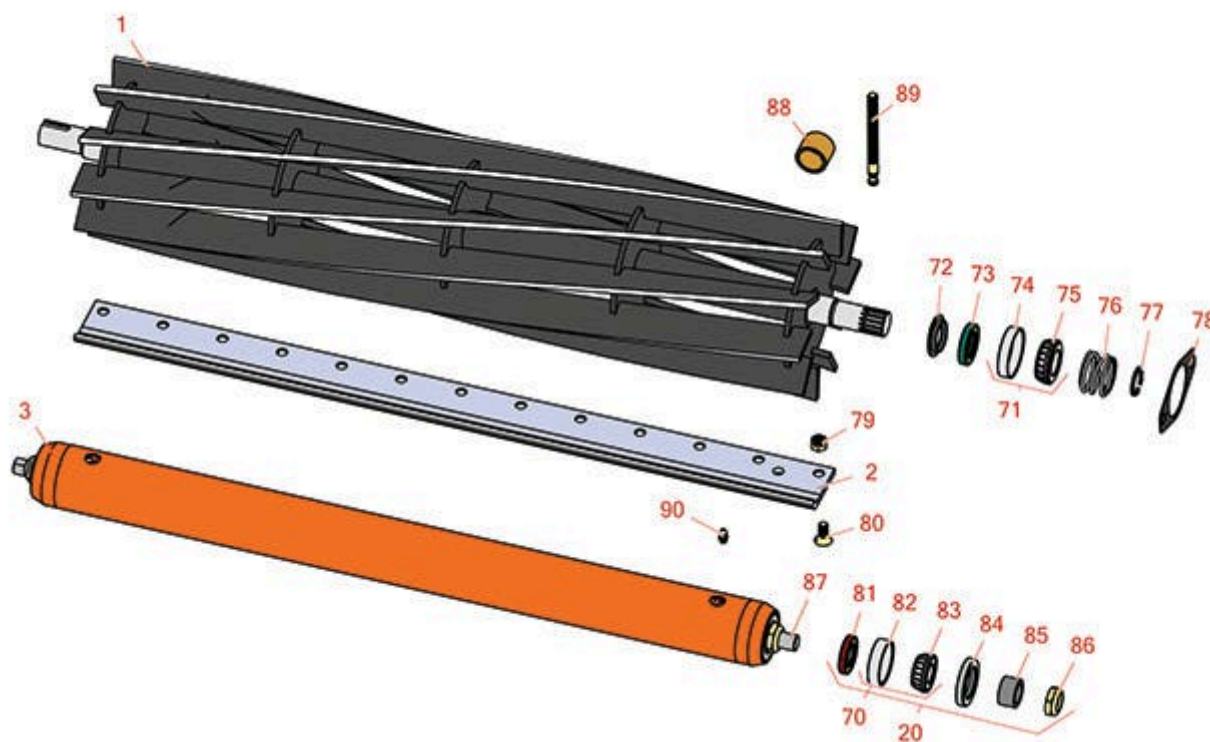




Replaces Jacobsen Tri-King 1884D Parts

Cutting Unit
Reel & Bedknife



All original equipment manufacturers names and part numbers are used for identification purposes only, and we are in no way implying that our products are original equipment parts. Prices subject to change without notice.



Replaces Jacobsen Tri-King 1884D Parts

Cutting Unit
Reel & Bedknife



| Item No | R&R Part No. | OEM Part No. | Description | Qty Req | Order Quantity |
|---------|--------------|--------------|-------------|---------|----------------|
|---------|--------------|--------------|-------------|---------|----------------|

R&R Reels, Lifetime Guaranteed

| | | | | | |
|---|----------------|--------|----------------------------------|---|--|
| 1 | R503359 | 503359 | Reel - 5 Blade LH/Center - 30 in | 2 | |
|---|----------------|--------|----------------------------------|---|--|

Detail Description: R&R Reel blades are expertly crafted from premium high carbon-boron alloy steel, heat-treated to perfectly complement both R&R and OEM bedknives. Each reel undergoes precision cylindrical grinding on bearing surfaces, followed by relief grinding for optimal performance. Advanced computer balancing ensures extended reel and bearing life. Backed by our lifetime guarantee against defects in materials and craftsmanship under normal use, R&R Reels deliver unmatched durability and cutting precision you can trust.:

| | | | | | |
|---|----------------|--------|-------------------------|---|--|
| 1 | R503360 | 503360 | Reel - 5 Blade RH 30 in | 1 | |
|---|----------------|--------|-------------------------|---|--|

Detail Description: R&R Reel blades are expertly crafted from premium high carbon-boron alloy steel, heat-treated to perfectly complement both R&R and OEM bedknives. Each reel undergoes precision cylindrical grinding on bearing surfaces, followed by relief grinding for optimal performance. Advanced computer balancing ensures extended reel and bearing life. Backed by our lifetime guarantee against defects in materials and craftsmanship under normal use, R&R Reels deliver unmatched durability and cutting precision you can trust.:

| | | | | | |
|---|----------------|--------|-----------------------------------|---|--|
| 1 | R503361 | 503361 | Reel - 10 Blade LH/Center - 30 in | 2 | |
|---|----------------|--------|-----------------------------------|---|--|

Detail Description: R&R Reel blades are expertly crafted from premium high carbon-boron alloy steel, heat-treated to perfectly complement both R&R and OEM bedknives. Each reel undergoes precision cylindrical grinding on bearing surfaces, followed by relief grinding for optimal performance. Advanced computer balancing ensures extended reel and bearing life. Backed by our lifetime guarantee against defects in materials and craftsmanship under normal use, R&R Reels deliver unmatched durability and cutting precision you can trust.:

| | | | | | |
|---|----------------|--------|----------------------------|---|--|
| 1 | R503362 | 503362 | Reel - 10 Blade RH - 30 in | 1 | |
|---|----------------|--------|----------------------------|---|--|

Detail Description: R&R Reel blades are expertly crafted from premium high carbon-boron alloy steel, heat-treated to perfectly complement both R&R and OEM bedknives. Each reel undergoes precision cylindrical grinding on bearing surfaces, followed by relief grinding for optimal performance. Advanced computer balancing ensures extended reel and bearing life. Backed by our lifetime guarantee against defects in materials and craftsmanship under normal use, R&R Reels deliver unmatched durability and cutting precision you can trust.:

R&R Bedknives, Lifetime Guaranteed

| | | | | | |
|---|----------------|------------------------------|----------------------------|---|--|
| 2 | R503550 | 331692, 503363, 503550 | Bedknife - 30 in (13 Hole) | 1 | |
|---|----------------|------------------------------|----------------------------|---|--|

All original equipment manufacturers names and part numbers are used for identification purposes only, and we are in no way implying that our products are original equipment parts. Prices subject to change without notice.



Replaces Jacobsen Tri-King 1884D Parts

Cutting Unit
Reel & Bedknife



| Item No | R&R Part No. | OEM Part No. | Description | Qty Req | Order Quantity |
|---------|--------------|--------------|-------------|---------|----------------|
|---------|--------------|--------------|-------------|---------|----------------|

Detail Description: R&R Bedknives are manufactured from high carbon-boron alloy steel and then hardened to RC46-49 to match the temper of our reel blades and original equipment reels. Bedknives are surface ground on the top and front edge and straightened three times before being packaged with oil for rust prevention. All R&R Bedknives now have an increased front edge grind for added life. All R&R Bedknives are guaranteed against defects in material and workmanship under normal use for the life of the part.:

R&R Rollers

| | | | | |
|---|----------------|-------------------|-------------------------------|---|
| 3 | R104130 | 116933, 132640 | Roller - Smooth Tubular Steel | 1 |
|---|----------------|-------------------|-------------------------------|---|

Detail Description: Constructed with a through shaft, this heavy duty roller uses greasable tapered bearings for extended life.:

Overhaul Kits

| | | | | |
|----|----------------|--|-----------------------|---|
| 20 | R100138 | | Overhaul Kit - Roller | 0 |
|----|----------------|--|-----------------------|---|

Detail Description: Includes 2 ea.: R3296-15 Locknuts, R253-152 Seals, R253-117 Seals, R5-4038 Wear Sleeves, R254-78 Bearings, R254-79 Bearing Cups, & R302-5 Grease Fittings:

Other Parts Available

| | | | | |
|----|----------------|--------------------|--------------------|---|
| 70 | R500534 | 500534, R500534 | Bearing - with Cup | 0 |
|----|----------------|--------------------|--------------------|---|

Detail Description: Kit includes: 1 ea R254-78- Bearing Cone & R254-79 Bearing Cone:

| | | | | |
|----|----------------|--------|------------------------------------|---|
| 71 | R500596 | 500596 | Tapered Bearing Set - Cup and Cone | 2 |
|----|----------------|--------|------------------------------------|---|

| | | | | |
|----|----------------|--------|-------------------|---|
| 72 | R364275 | 364275 | Disc - Reel Shaft | 2 |
|----|----------------|--------|-------------------|---|

| | | | | |
|----|----------------|--------------------|------|---|
| 73 | R337593 | 3000983, 337593 | Seal | 2 |
|----|----------------|--------------------|------|---|

| | | | | |
|----|----------------|--------|---------------|---|
| 74 | R254-72 | 313456 | Cup - Bearing | 2 |
|----|----------------|--------|---------------|---|

| | | | | |
|----|----------------|--------|----------------------|---|
| 75 | R254-94 | 313089 | Tapered Bearing Cone | 2 |
|----|----------------|--------|----------------------|---|

| | | | | |
|----|----------------|--------|---------------------------|---|
| 76 | R364148 | 364148 | Spring - Reel Brg Tension | 1 |
|----|----------------|--------|---------------------------|---|

| | | | | |
|----|----------------|--------|------------------|---|
| 77 | R458039 | 458039 | Ring - Retaining | 1 |
|----|----------------|--------|------------------|---|

All original equipment manufacturers names and part numbers are used for identification purposes only, and we are in no way implying that our products are original equipment parts. Prices subject to change without notice.



Replaces Jacobsen Tri-King 1884D Parts

Cutting Unit
Reel & Bedknife



| Item No | R&R Part No. | OEM Part No. | Description | Qty Req | Order Quantity |
|---|-----------------|---|-----------------------------------|---------|----------------|
| 78 | R364777 | 364777 | Gasket - Motor End | 1 | |
| 79 | R101271 | 445684 | Nut - Bedknife | 13 | |
| 80 | R101270 | 402698, 403757 | Screw - Bedknife 3/8-24 x 13/16 | 13 | |
| 81 | R253-152 | 3001656 | Seal - Inner Roller | 2 | |
| 82 | R254-79 | 254-79, 4121175 | Cup - Bearing | 2 | |
| <i>Detail Description: Use R254-79M installation mandrel to properly install race.:</i> | | | | | |
| 83 | R254-78 | 254-78, 385174, 4121174, 4135152 | Tapered Bearing Cone | 2 | |
| 84 | R253-117 | 253-117, 3004882 | Seal - Outer Triple Lip | 2 | |
| 85 | R5-4038 | 5-4038 | Sleeve - Wear Reel Shaft | 2 | |
| 86 | R3296-15 | 3296-15, 367029, 444742 | Locknut - 3/4-16 Nylon Jam | 2 | |
| 87 | R1013820 | | Shaft - 1 SS Roller 2 Pc | 1 | |
| 88 | R364140 | 364140 | Bushing | 2 | |
| <i>Tech Note: Pull Frame:</i> | | | | | |
| 89 | R364265 | 364265 | Screw - Adjusting Reel 3/8-16 Thd | 2 | |
| 90 | R302-5 | 302-5, 471214, 471223, 471226 | Fitting - Grease | 2 | |

All original equipment manufacturers names and part numbers are used for identification purposes only, and we are in no way implying that our products are original equipment parts. Prices subject to change without notice.