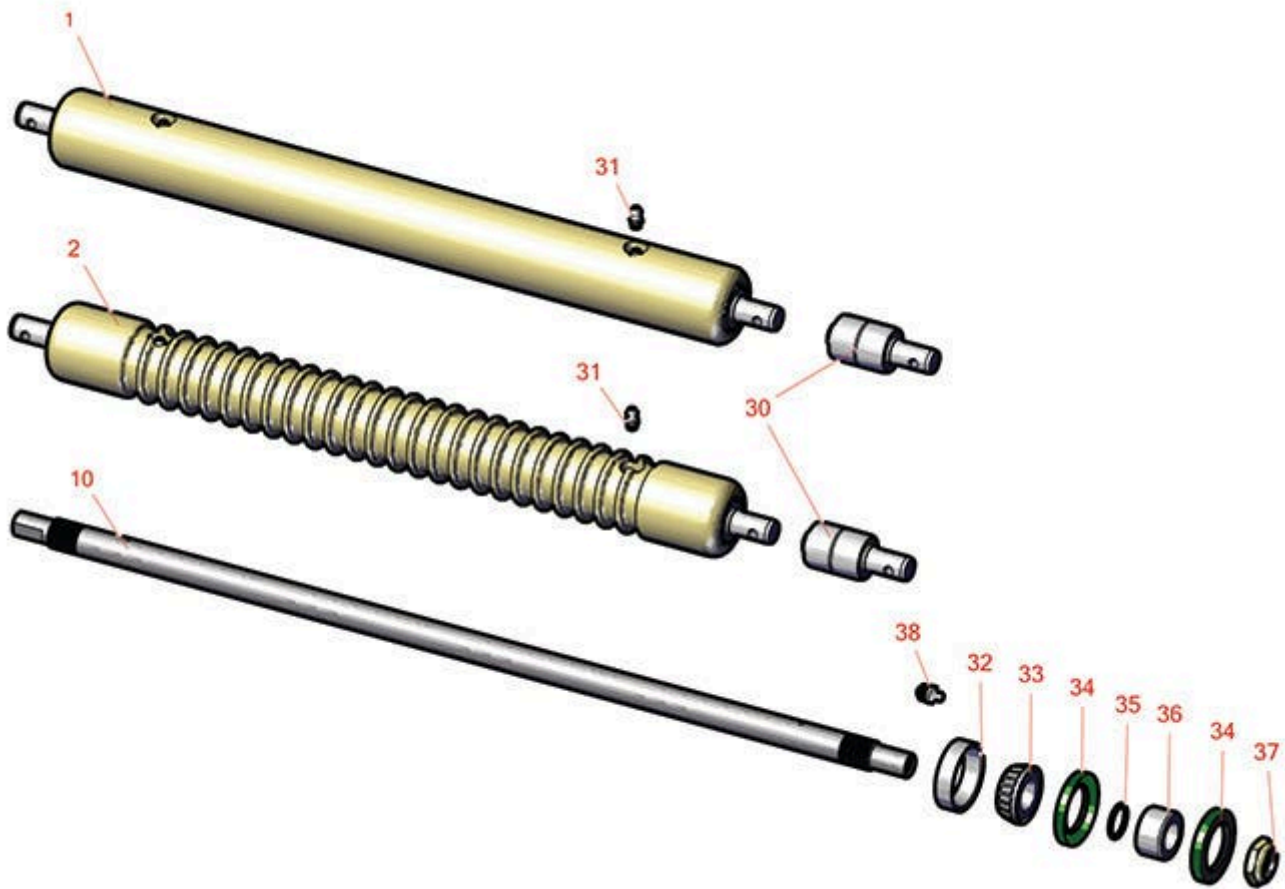




# Replaces John Deere 180B Walk-Behind Greens Mower Parts

Cutting Unit  
Rollers



All original equipment manufacturers names and part numbers are used for identification purposes only, and we are in no way implying that our products are original equipment parts. Prices subject to change without notice.



# Replaces John Deere 180B Walk-Behind Greens Mower Parts

Cutting Unit  
Rollers



Item No	R&R Part No.	OEM Part No.	Description	Qty Req	Order Quantity
---------	--------------	--------------	-------------	---------	----------------

## R&R Rollers to Fit 180B

1	RAMT2786	AMT2786, AMT2981, BM20561	Roller - Smooth Solid Steel	1	
---	----------	---------------------------------	-----------------------------	---	--

*Detail Description: Machined from solid steel, this heavy weight roller uses greasable "water-pump" style bearings.:*

1	RAMT2787	AMT2787, AMT2982	Roller - Smooth Solid Steel	1	
---	----------	---------------------	-----------------------------	---	--

*Detail Description: Machined from solid steel, this heavy weight roller uses greasable "water-pump" style bearings.:*

1	RAMT1442	AMT1442, AMT2878	Roller - Smooth Solid Steel	1	
---	----------	---------------------	-----------------------------	---	--

*Detail Description: Machined from solid steel, this heavy weight roller uses greasable "water-pump" style bearings.:*

2	RAMT2784	AMT2784, AMT2979, BM20562	Roller - Grooved Machined Solid Steel	1	
---	----------	---------------------------------	---------------------------------------	---	--

*Detail Description: Machined from solid steel, this heavy weight roller uses greasable "water-pump" style bearings.:*

2	RAMT2785	AMT2785	Roller - Grooved Machined Solid Steel	1	
---	----------	---------	---------------------------------------	---	--

*Detail Description: Machined from solid steel, this heavy weight roller uses greasable "water-pump" style bearings.:*

2	RAMT1443	AMT1443, AMT2879	Roller - Grooved Machined Solid Steel	1	
---	----------	---------------------	---------------------------------------	---	--

*Detail Description: Machined from solid steel, this heavy weight roller uses greasable "water-pump" style bearings. Extended length body.:*

## Shafts

10	RET17515	ET17515	Shaft - Roller	1	
----	----------	---------	----------------	---	--

## Other Parts Available

All original equipment manufacturers names and part numbers are used for identification purposes only, and we are in no way implying that our products are original equipment parts. Prices subject to change without notice.



# Replaces John Deere 180B Walk-Behind Greens Mower Parts

Cutting Unit  
Rollers



Item No	R&R Part No.	OEM Part No.	Description	Qty Req	Order Quantity
30	<b>RAA35741</b>	AA35741, AET10129, TCA22836	Bearing	2	
<i>Detail Description: 1/4" Side Hole:</i>					
31	<b>R302-5</b>	JD7797, JD7842, JD7844	Fitting - Grease	2	
32	<b>R254-79</b>	JD8226	Cup - Bearing	2	
<i>Detail Description: Use R254-79M installation mandrel to properly install race.:</i>					
33	<b>R254-78</b>	JD8188	Tapered Bearing Cone	2	
34	<b>RET15755</b>	ET15755	Seal - Oil	4	
35	<b>R237-54</b>	U46731, U6731	O-Ring - Small	2	
36	<b>RET15726</b>	ET15726, RET15726	Sleeve - Wear Hardened	2	
37	<b>R3296-15</b>	N101345	Locknut - 3/4-16 Nylon Jam	2	
38	<b>R471219</b>	471219, 471231, JD7759, JD7798	Zerk - Grease	2	

All original equipment manufacturers names and part numbers are used for identification purposes only, and we are in no way implying that our products are original equipment parts. Prices subject to change without notice.