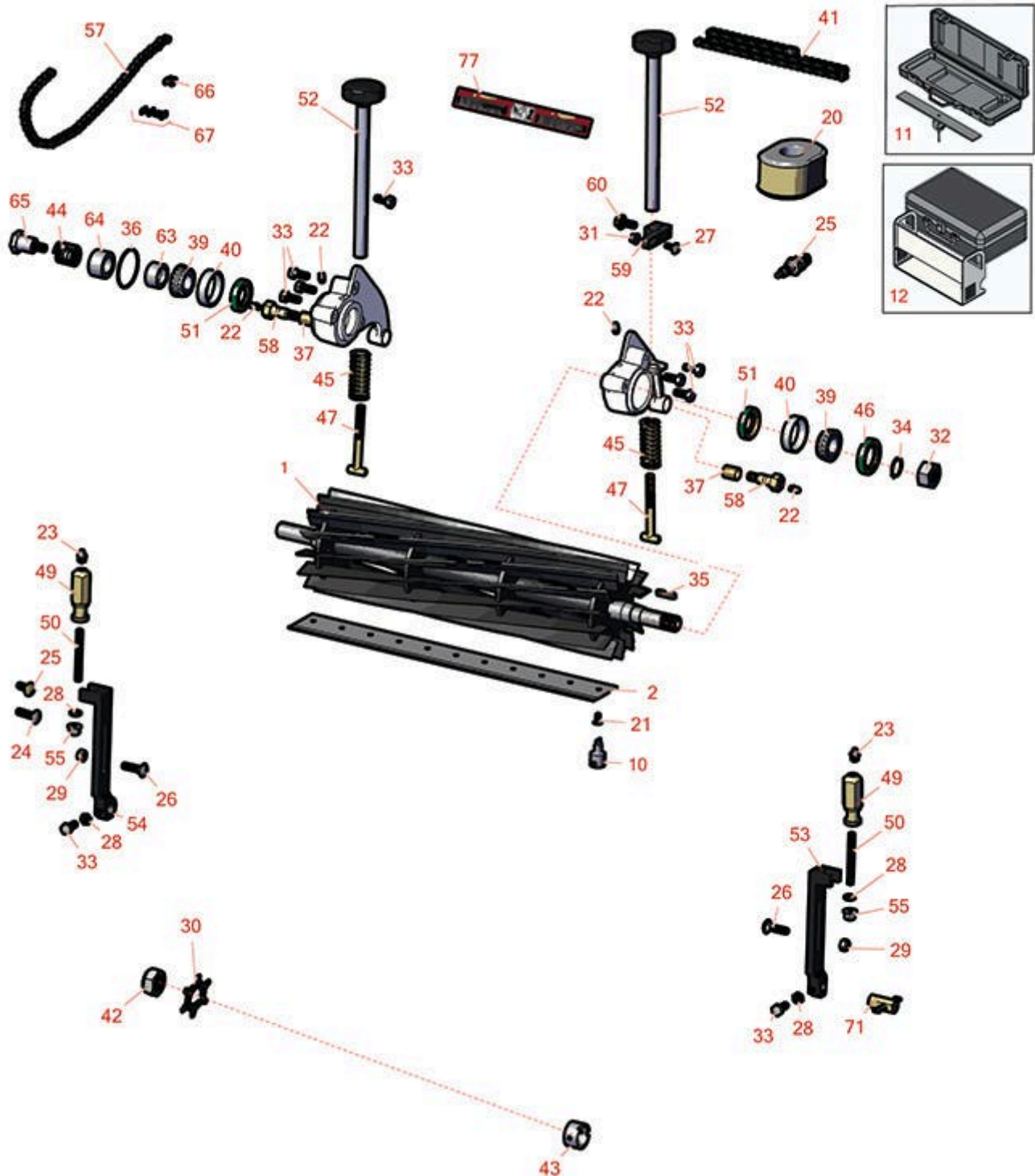




# Replaces John Deere 180C Walk-Behind Greens Mower Parts

Cutting Unit  
Reel & Bedknife



All original equipment manufacturers names and part numbers are used for identification purposes only, and we are in no way implying that our products are original equipment parts. Prices subject to change without notice.



# Replaces John Deere 180C Walk-Behind Greens Mower Parts

Cutting Unit  
Reel & Bedknife



Item No	R&R Part No.	OEM Part No.	Description	Qty Req	Order Quantity
---------	--------------	--------------	-------------	---------	----------------

## R&R Reels, Lifetime Guaranteed

1	<b>RAMT2715</b>	AMT2904	Reel - 11 Blade 18in	1
---	-----------------	---------	----------------------	---

*Detail Description: R&R Reel blades are expertly crafted from premium high carbon-boron alloy steel, heat-treated to perfectly complement both R&R and OEM bedknives. Each reel undergoes precision cylindrical grinding on bearing surfaces, followed by relief grinding for optimal performance. Advanced computer balancing ensures extended reel and bearing life. Backed by our lifetime guarantee against defects in materials and craftsmanship under normal use, R&R Reels deliver unmatched durability and cutting precision you can trust.:*

1	<b>R130235</b>		Reel - 14 Blade	1
---	----------------	--	-----------------	---

*Detail Description: R&R Reel blades are expertly crafted from premium high carbon-boron alloy steel, heat-treated to perfectly complement both R&R and OEM bedknives. Each reel undergoes precision cylindrical grinding on bearing surfaces, followed by relief grinding for optimal performance. Advanced computer balancing ensures extended reel and bearing life. Backed by our lifetime guarantee against defects in materials and craftsmanship under normal use, R&R Reels deliver unmatched durability and cutting precision you can trust.:*

## R&R Bedknives, Lifetime Guaranteed

2	<b>R130110</b>		Bedknife - Micro Cut	1
---	----------------	--	----------------------	---

*Detail Description: R&R Bedknives are manufactured from high carbon-boron alloy steel and then hardened to RC46-49 to match the temper of our reel blades and original equipment reels. Bedknives are surface ground on the top and front edge and straightened three times before being packaged with oil for rust prevention. All R&R Bedknives now have an increased front edge grind for added life. All R&R Bedknives are guaranteed against defects in material and workmanship under normal use for the life of the part.:*

2	<b>RMT6944</b>	MT6944, MT7350, UC19156	Bedknife - Low Cut Min HOC .079	1
---	----------------	-------------------------------	---------------------------------	---

*Detail Description: R&R Bedknives are manufactured from high carbon-boron alloy steel and then hardened to RC46-49 to match the temper of our reel blades and original equipment reels. Bedknives are surface ground on the top and front edge and straightened three times before being packaged with oil for rust prevention. All R&R Bedknives now have an increased front edge grind for added life. All R&R Bedknives are guaranteed against defects in material and workmanship under normal use for the life of the part.:*

2	<b>RMT4846</b>	MT4846, MT4906, UC18877	Bedknife - Tournament	1
---	----------------	-------------------------------	-----------------------	---

All original equipment manufacturers names and part numbers are used for identification purposes only, and we are in no way implying that our products are original equipment parts. Prices subject to change without notice.



# Replaces John Deere 180C Walk-Behind Greens Mower Parts

Cutting Unit  
Reel & Bedknife



Item No	R&R Part No.	OEM Part No.	Description	Qty Req	Order Quantity
---------	--------------	--------------	-------------	---------	----------------

*Detail Description:* R&R Bedknives are manufactured from high carbon-boron alloy steel and then hardened to RC46-49 to match the temper of our reel blades and original equipment reels. Bedknives are surface ground on the top and front edge and straightened three times before being packaged with oil for rust prevention. All R&R Bedknives now have an increased front edge grind for added life. All R&R Bedknives are guaranteed against defects in material and workmanship under normal use for the life of the part.:

2	<b>RMT7350</b>	MT6944, MT7350	Bedknife - 22in Low Cut Min HOC .079	1	
---	----------------	-------------------	---	---	--

*Detail Description:* R&R Bedknives are manufactured from high carbon-boron alloy steel and then hardened to RC46-49 to match the temper of our reel blades and original equipment reels. Bedknives are surface ground on the top and front edge and straightened three times before being packaged with oil for rust prevention. All R&R Bedknives now have an increased front edge grind for added life. All R&R Bedknives are guaranteed against defects in material and workmanship under normal use for the life of the part.:

## Service Tools

10	<b>R101278T</b>		Bedknife Screw Driver Tool	1	
----	-----------------	--	----------------------------	---	--

*Tech Note:* Easily install and remove bed knife screws with the help of a ratchet. Tool manufactured with hardened alloy steel.:

*Detail Description:* Easily install and remove bed knife screws with the help of a ratchet. Tool manufactured with hardened alloy steel.:

11	<b>R184</b>		Masters Gauge - Digital - Inches/Metric	1	
----	-------------	--	--	---	--

*Detail Description:* Accurately measures desired height of cut. Easy to read digital indicator. Displays measurements in decimals and fractions, in English and Metric. 18" length.:

11	<b>R175</b>		Masters Gauge - Inches	1	
----	-------------	--	------------------------	---	--

*Detail Description:* Dial indicator accurately measures desired height of cut. Easy to use. Place the bar on front and rear rollers then push the measuring rod until it touches the bedknife edge. Hard anodized aluminum. Fits all greensmowers. Easy to read dial indicator. Displays measurements in .001" increments. 18" length.:

12	<b>RP508</b>		Turf Evaluation and Height of Cut Prism Tool	1	
----	--------------	--	---	---	--

All original equipment manufacturers names and part numbers are used for identification purposes only, and we are in no way implying that our products are original equipment parts. Prices subject to change without notice.



# Replaces John Deere 180C Walk-Behind Greens Mower Parts

Cutting Unit  
Reel & Bedknife



Item No	R&R Part No.	OEM Part No.	Description	Qty Req	Order Quantity
---------	--------------	--------------	-------------	---------	----------------

*Detail Description: Measure actual turfgrass height of cut, as well as, smoothness and quality of cut, on your greens to 100th of an inch. This impressive Height of Cut Prism Gauge is designed with a solid glass prism in a stainless steel frame. Graduated lines show 1/8th, 1/10th and 1/16th (.002 lines) and 1 mm intervals with grass measurements up to 1-5/8 inches or 40 mm. tall. Complete with protective case. Measures inches and metric.:*

## Filters

20	<b>RHE17210-ZE0-505</b>	MIU11464	Honda Element - Air Cleaner	1
----	-------------------------	----------	-----------------------------	---

## Electrical, Gauges & Controls

25	<b>RN7131</b>	M128206	NGK Spark Plug - BPR6ES	1
----	---------------	---------	-------------------------	---

## Blades

30	<b>RET14707</b>	ET14707	Verti-Cut Blade - .025 x 2.375	60
30	<b>RET14707C</b>		Verti-Cut Blade - .025 x 2.375 Carbide Tipped	60

## Other Parts Available

21	<b>R101278</b>	21M7194	Screw - Bedknife	11
22	<b>R302-5</b>	JD7797, JD7842, JD7844	Fitting - Grease	2
23	<b>R471219</b>	471219, 471231, JD7759, JD7798	Zerk - Grease	2
24	<b>R03M7186</b>	03M7186	Bolt - Carriage 8-1.25 x 30mm	4
25	<b>R03M7184</b>	03M7184	Bolt - Carriage M8	4
26	<b>R03M7094</b>	03M7094	Bolt - Carriage M8-1.25 x 30	4
27	<b>R03M7222</b>	03M7222	Bolt - Carriage M6-1.0 x 20	2
28	<b>R14M7151</b>	14M7151	Nut - Jam Roller Adj	4

All original equipment manufacturers names and part numbers are used for identification purposes only, and we are in no way implying that our products are original equipment parts. Prices subject to change without notice.



# Replaces John Deere 180C Walk-Behind Greens Mower Parts

*Cutting Unit  
Reel & Bedknife*



Item No	R&R Part No.	OEM Part No.	Description	Qty Req	Order Quantity
29	R14M7166	14M7166	Locknut - 8mm x 1.25 ESNA	2	
31	R14M7397	14M7397, 14M7463	Locknut - 6mm x 1.0 ESNA Flanged	2	
32	R14M7306	14M7306	Nut - M20-1.5	1	
33	R19M7881	19M7881	Bolt - Hex HD M8-1.25 x 20	6	
34	R40M7080	40M7080, ET11059	Ring - Snap	1	
35	R49M7049	49M7049	Key - 5mm x 22mm	1	
36	RM44162	M44162	O-Ring - Reel	1	
37	RP44946	P44946	Bushing - Bronze	2	
39	RAMT1108	AMT1108	Tapered Bearing Cone	2	
40	RMT2108	MT2108	Tapered Bearing Cup	2	
41	RTCA16596	TCA16596	Roller Chain #35	1	
42	RN198341	N198341	Nut - Nyloc 7/8-14	1	
43	RET14917	ET14917	Spacer	1	
44	RET11053	ET11053	Spring - Reel	1	
45	RET11070	ET11070	Spring - Bed Bar	2	
46	RET11073	ET11073	Seal - Reel Outer	1	
47	RET11372	ET11372	Bolt - Adjusting Bed Bar	2	
49	RMT1087	MT1087	Knob - Adjusting Roller	2	
50	RMT1088	MT1088	Stud - Roller Adj.	2	
51	RMT1160	MT1160	Seal - Reel	2	
52	RAMT2798	AMT2798	Handle - Adjuster	2	

All original equipment manufacturers names and part numbers are used for identification purposes only, and we are in no way implying that our products are original equipment parts. Prices subject to change without notice.



# Replaces John Deere 180C Walk-Behind Greens Mower Parts

*Cutting Unit  
Reel & Bedknife*



Item No	R&R Part No.	OEM Part No.	Description	Qty Req	Order Quantity
53	<b>RMT5245</b>	MT5245	Bracket - Roller RH	1	
54	<b>RMT5244</b>	MT5244	Bracket - Roller LH	1	
55	<b>RE63525</b>	E63525	Nut - Flanged M8-1.25	4	
57	<b>RTCA16595</b>	TCA16595	Chain - Rear Roller	1	
58	<b>RET11371</b>	ET11371	Screw - Special	2	
59	<b>RUC16469</b>	MT6952, UC16469	Clamp	2	
60	<b>R19M7866</b>	19M7866	Bolt - Flanged Hex M8-1.25 x 20	2	
63	<b>RET11368</b>	ET11368	Spacer	1	
64	<b>RET11464</b>	ET11464	Spacer	1	
65	<b>RET11367</b>	ET11367	Cap Screw - Special	1	
66	<b>RSW35OLUS</b>	SW35OLUS	Chain Link - Offset #35	1	
67	<b>RSW35COUS</b>	SW35COUS	Chain Link - Coupler #35	1	
71	<b>RET11356</b>	ET11356	Nut - Adjusting	2	
77	<b>RMT6517</b>	MT6517	Label - Warning	1	

All original equipment manufacturers names and part numbers are used for identification purposes only, and we are in no way implying that our products are original equipment parts. Prices subject to change without notice.