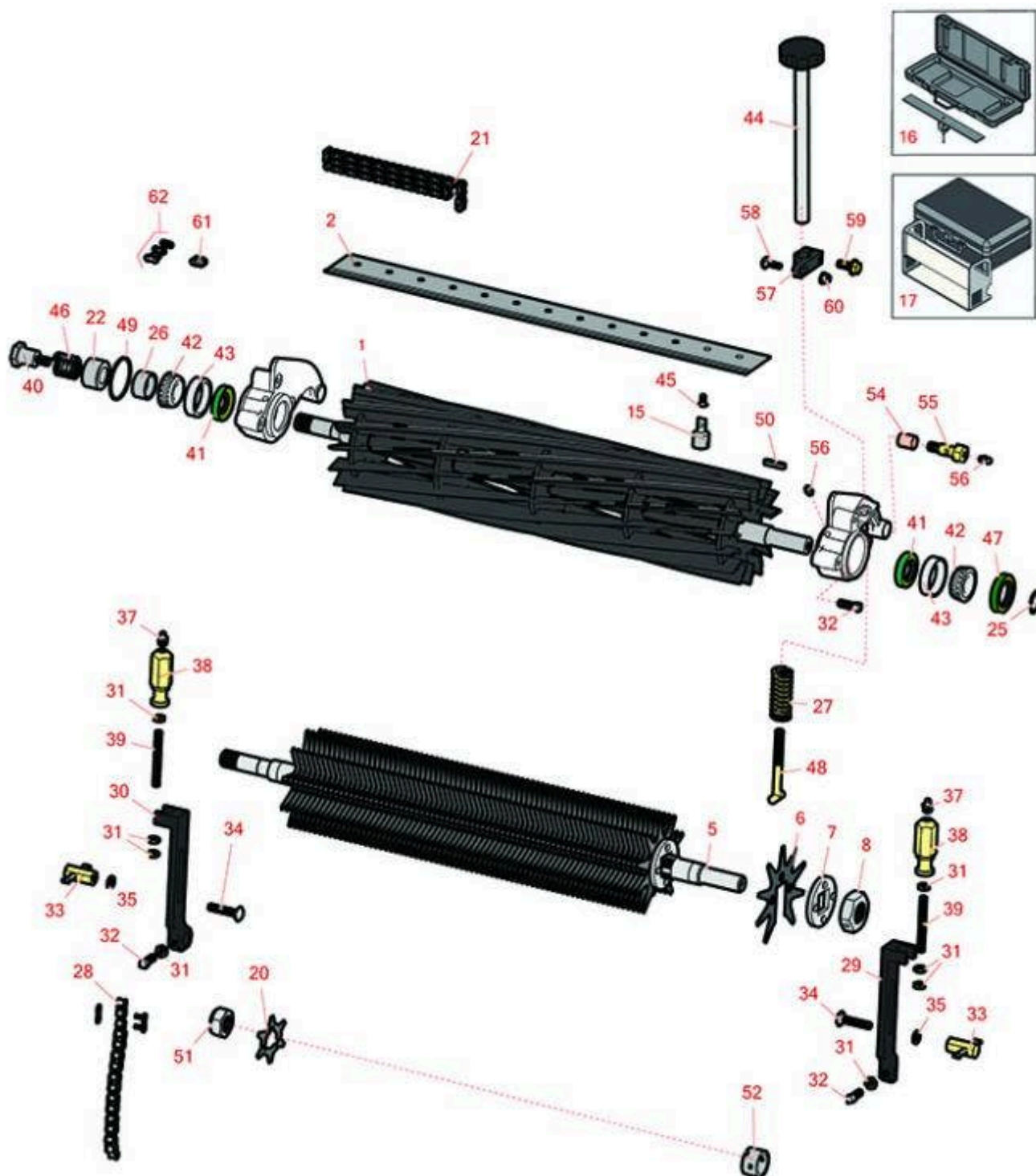




Replaces John Deere 220B Greens Mower Parts

Cutting Unit
Reel & Bedknife



All original equipment manufacturers names and part numbers are used for identification purposes only, and we are in no way implying that our products are original equipment parts. Prices subject to change without notice.



Replaces John Deere 220B Greens Mower Parts

Cutting Unit
Reel & Bedknife



| Item No | R&R Part No. | OEM Part No. | Description | Qty Req | Order Quantity |
|---------|--------------|--------------|-------------|---------|----------------|
|---------|--------------|--------------|-------------|---------|----------------|

R&R Reels, Lifetime Guaranteed

| | | | | | |
|---|----------|--------------------------------|---------------------|---|--|
| 1 | RET11055 | AMT2867, AMT536, ET11055 | Reel - 9 Blade 22in | 1 | |
|---|----------|--------------------------------|---------------------|---|--|

Detail Description: R&R Reel blades are expertly crafted from premium high carbon-boron alloy steel, heat-treated to perfectly complement both R&R and OEM bedknives. Each reel undergoes precision cylindrical grinding on bearing surfaces, followed by relief grinding for optimal performance. Advanced computer balancing ensures extended reel and bearing life. Backed by our lifetime guarantee against defects in materials and craftsmanship under normal use, R&R Reels deliver unmatched durability and cutting precision you can trust.:

| | | | | | |
|---|---------|--------------------|----------------------|---|--|
| 1 | RAMT537 | AMT2886, AMT537 | Reel - 11 Blade 22in | 1 | |
|---|---------|--------------------|----------------------|---|--|

Detail Description: R&R Reel blades are expertly crafted from premium high carbon-boron alloy steel, heat-treated to perfectly complement both R&R and OEM bedknives. Each reel undergoes precision cylindrical grinding on bearing surfaces, followed by relief grinding for optimal performance. Advanced computer balancing ensures extended reel and bearing life. Backed by our lifetime guarantee against defects in materials and craftsmanship under normal use, R&R Reels deliver unmatched durability and cutting precision you can trust.:

| | | | | | |
|---|---------|--|----------------------|---|--|
| 1 | R130240 | | Reel - 14 Blade 22in | 1 | |
|---|---------|--|----------------------|---|--|

Detail Description: R&R Reel blades are expertly crafted from premium high carbon-boron alloy steel, heat-treated to perfectly complement both R&R and OEM bedknives. Each reel undergoes precision cylindrical grinding on bearing surfaces, followed by relief grinding for optimal performance. Advanced computer balancing ensures extended reel and bearing life. Backed by our lifetime guarantee against defects in materials and craftsmanship under normal use, R&R Reels deliver unmatched durability and cutting precision you can trust.:

R&R Bedknives, Lifetime Guaranteed

| | | | | | |
|---|----------|---|--|---|--|
| 2 | RET17533 | ET14402, ET17533, ET17767, MT4869, MT7351, UC18873 | Bedknife - 22in Standard- .126 Min. HOC | 1 | |
|---|----------|---|--|---|--|

All original equipment manufacturers names and part numbers are used for identification purposes only, and we are in no way implying that our products are original equipment parts. Prices subject to change without notice.



Replaces John Deere 220B Greens Mower Parts

Cutting Unit
Reel & Bedknife



| Item No | R&R Part No. | OEM Part No. | Description | Qty Req | Order Quantity |
|---------|--------------|--------------|-------------|---------|----------------|
|---------|--------------|--------------|-------------|---------|----------------|

Detail Description: R&R Bedknives are manufactured from high carbon-boron alloy steel and then hardened to RC46-49 to match the temper of our reel blades and original equipment reels. Bedknives are surface ground on the top and front edge and straightened three times before being packaged with oil for rust prevention. All R&R Bedknives now have an increased front edge grind for added life. All R&R Bedknives are guaranteed against defects in material and workmanship under normal use for the life of the part.:

| | | | | | |
|---|-----------------|---------|--|---|--|
| 2 | RET17534 | ET17534 | Bedknife - 22in Tounament-.098 Min HOC | 1 | |
|---|-----------------|---------|--|---|--|

Detail Description: R&R Bedknives are manufactured from high carbon-boron alloy steel and then hardened to RC46-49 to match the temper of our reel blades and original equipment reels. Bedknives are surface ground on the top and front edge and straightened three times before being packaged with oil for rust prevention. All R&R Bedknives now have an increased front edge grind for added life. All R&R Bedknives are guaranteed against defects in material and workmanship under normal use for the life of the part.:

| | | | | | |
|---|----------------|-------------------|--------------------------------------|---|--|
| 2 | RMT7350 | MT6944, MT7350 | Bedknife - 22in Low Cut Min HOC .079 | 1 | |
|---|----------------|-------------------|--------------------------------------|---|--|

Detail Description: R&R Bedknives are manufactured from high carbon-boron alloy steel and then hardened to RC46-49 to match the temper of our reel blades and original equipment reels. Bedknives are surface ground on the top and front edge and straightened three times before being packaged with oil for rust prevention. All R&R Bedknives now have an increased front edge grind for added life. All R&R Bedknives are guaranteed against defects in material and workmanship under normal use for the life of the part.:

| | | | | | |
|---|----------------|--|--------------------------------------|---|--|
| 2 | RMT7351 | ET17489, MT7351, UC19154, UC28163 | Bedknife - 22in Lo-Cut .079 Min. HOC | 1 | |
|---|----------------|--|--------------------------------------|---|--|

Detail Description: R&R Bedknives are manufactured from high carbon-boron alloy steel and then hardened to RC46-49 to match the temper of our reel blades and original equipment reels. Bedknives are surface ground on the top and front edge and straightened three times before being packaged with oil for rust prevention. All R&R Bedknives now have an increased front edge grind for added life. All R&R Bedknives are guaranteed against defects in material and workmanship under normal use for the life of the part.:

R&R Razor Tool Steel Bedknives, Lifetime Guaranteed

| | | | | | |
|---|----------------|--|--|---|--|
| 2 | R130115 | | Bedknife - Razor Tool Steel - 22 Micro Cut | 1 | |
|---|----------------|--|--|---|--|

All original equipment manufacturers names and part numbers are used for identification purposes only, and we are in no way implying that our products are original equipment parts. Prices subject to change without notice.



Replaces John Deere 220B Greens Mower Parts

Cutting Unit
Reel & Bedknife



| Item No | R&R Part No. | OEM Part No. | Description | Qty Req | Order Quantity |
|---------|--------------|--------------|-------------|---------|----------------|
|---------|--------------|--------------|-------------|---------|----------------|

Detail Description: R&R Razor bedknives are manufactured from premium alloy tool steel steel and then hardened to RC48-51 to match the temper of our Razor reel blades and original equipment premium series reels. Bedknives are surface ground on the top and front edge and specially packaged for rust prevention. All R&R Bedknives now have an increased front edge grind for added life. All R&R Bedknives are guaranteed against defects in material and workmanship under normal use for the life of the part. You can expect up to double the life over standard bedknives.:

| | | | | | |
|---|----------------|--------------------|--|---|--|
| 2 | R130116 | MT4846, UC18877 | Bedknife - Razor Tool Steel - 22 Tournament Cut | 1 | |
|---|----------------|--------------------|--|---|--|

Detail Description: R&R Razor bedknives are manufactured from premium alloy tool steel steel and then hardened to RC48-51 to match the temper of our Razor reel blades and original equipment premium series reels. Bedknives are surface ground on the top and front edge and specially packaged for rust prevention. All R&R Bedknives now have an increased front edge grind for added life. All R&R Bedknives are guaranteed against defects in material and workmanship under normal use for the life of the part. You can expect up to double the life over standard bedknives.:

Vertical Reel to fit 220B

| | | | | | |
|---|----------------|--|------------------------------|----|--|
| 5 | R130141 | | Shaft - V-Cut | 1 | |
| 6 | R101160 | | Verti-Cut Blade - Fits 22 Gm | 73 | |
| 7 | R352221 | | Spacer - Nylon V-Cut Shaft | 74 | |
| 8 | R352437 | | Nut - V-Cut Shaft | 1 | |

Service Tools

| | | | | | |
|----|-----------------|--|----------------------------|---|--|
| 15 | R101278T | | Bedknife Screw Driver Tool | 1 | |
|----|-----------------|--|----------------------------|---|--|

Tech Note: Easily install and remove bed knife screws with the help of a ratchet. Tool manufactured with hardened alloy steel.:

Detail Description: Easily install and remove bed knife screws with the help of a ratchet. Tool manufactured with hardened alloy steel.:

| | | | | | |
|----|-------------|--|--|---|--|
| 16 | R184 | | Masters Gauge - Digital - Inches/Metric | 1 | |
|----|-------------|--|--|---|--|

Detail Description: Accurately measures desired height of cut. Easy to read digital indicator. Displays measurements in decimals and fractions, in English and Metric. 18" length.:

All original equipment manufacturers names and part numbers are used for identification purposes only, and we are in no way implying that our products are original equipment parts. Prices subject to change without notice.



Replaces John Deere 220B Greens Mower Parts

Cutting Unit
Reel & Bedknife



| Item No | R&R Part No. | OEM Part No. | Description | Qty Req | Order Quantity |
|---------|--------------|--------------|-------------|---------|----------------|
|---------|--------------|--------------|-------------|---------|----------------|

| | | | | | |
|----|-------------|--|------------------------|---|--|
| 16 | R175 | | Masters Gauge - Inches | 1 | |
|----|-------------|--|------------------------|---|--|

Detail Description: Dial indicator accurately measures desired height of cut. Easy to use. Place the bar on front and rear rollers then push the measuring rod until it touches the bedknife edge. Hard anodized aluminum. Fits all greensmowers. Easy to read dial indicator. Displays measurements in .001" increments. 18" length.:

| | | | | | |
|----|--------------|--|--|---|--|
| 17 | RP508 | | Turf Evaluation and Height of Cut Prism Tool | 1 | |
|----|--------------|--|--|---|--|

Detail Description: Measure actual turfgrass height of cut, as well as, smoothness and quality of cut, on your greens to 100th of an inch. This impressive Height of Cut Prism Gauge is designed with a solid glass prism in a stainless steel frame. Graduated lines show 1/8th, 1/10th and 1/16th (.002 lines) and 1 mm intervals with grass measurements up to 1-5/8 inches or 40 mm. tall. Complete with protective case. Measures inches and metric.:

Other Parts Available

| | | | | | |
|----|------------------|---------------------|---|----|--|
| 20 | RET14707 | ET14707 | Verti-Cut Blade - .025 x 2.375 | 60 | |
| 20 | RET14707C | | Verti-Cut Blade - .025 x 2.375 Carbide Tipped | 60 | |
| 21 | RTCA16596 | TCA16596 | Roller Chain #35 | 1 | |
| 22 | RET11464 | ET11464 | Spacer | 1 | |
| 25 | R40M7080 | 40M7080, ET11059 | Ring - Snap | 1 | |
| 26 | RET11368 | ET11368 | Spacer | 1 | |
| 27 | RET11070 | ET11070 | Spring - Bed Bar | 2 | |
| 28 | RAMT2778 | | Chain - Rear Roller | 1 | |
| 28 | RTCA16595 | TCA16595 | Chain - Rear Roller | 1 | |
| 28 | RAMT2862 | | Chain - Reel Drive | 1 | |
| 29 | RMT5244 | MT5244 | Bracket - Roller LH | 1 | |
| 30 | RMT5245 | MT5245 | Bracket - Roller RH | 1 | |

All original equipment manufacturers names and part numbers are used for identification purposes only, and we are in no way implying that our products are original equipment parts. Prices subject to change without notice.



Replaces John Deere 220B Greens Mower Parts

*Cutting Unit
Reel & Bedknife*



| Item No | R&R Part No. | OEM Part No. | Description | Qty Req | Order Quantity |
|---------|-----------------|---|-------------------------------|---------|----------------|
| 31 | R14M7151 | 14M7151 | Nut - Jam Roller Adj | 2 | |
| 32 | RA50744 | A50744 | Screw - 8mm-1.25 x 25 Sq HD | 2 | |
| 32 | R19M7881 | 19M7881 | Bolt - Hex HD M8-1.25 x 20 | 2 | |
| 33 | RET11356 | ET11356 | Nut - Adjusting | 2 | |
| 34 | R03M7186 | 03M7186 | Bolt - Carriage 8-1.25 x 30mm | 2 | |
| 35 | R24M7036 | 24M7036 | Washer - Flat 8mm Zinc | 2 | |
| 37 | R471219 | 471219, 471231, JD7759, JD7798 | Zerk - Grease | 2 | |
| 38 | RMT1087 | MT1087 | Knob - Adjusting Roller | 2 | |
| 39 | RMT1088 | MT1088 | Stud - Roller Adj. | 2 | |
| 40 | RET11367 | ET11367 | Cap Screw - Special | 1 | |
| 41 | RMT1160 | MT1160 | Seal - Reel | 2 | |
| 42 | RAMT1108 | AMT1108 | Tapered Bearing Cone | 2 | |
| 43 | RMT2108 | MT2108 | Tapered Bearing Cup | 2 | |
| 44 | RAMT2798 | AMT2798 | Handle - Adjuster | 2 | |
| 45 | R101278 | 21M7194 | Screw - Bedknife | 11 | |
| 46 | RET11053 | ET11053 | Spring - Reel | 2 | |
| 47 | RET11073 | ET11073 | Seal - Reel Outer | 1 | |
| 48 | RET11372 | ET11372 | Bolt - Adjusting Bed Bar | 2 | |
| 49 | RM44162 | M44162 | O-Ring - Reel | 1 | |
| 50 | R49M7049 | 49M7049 | Key - 5mm x 22mm | 1 | |

All original equipment manufacturers names and part numbers are used for identification purposes only, and we are in no way implying that our products are original equipment parts. Prices subject to change without notice.



Replaces John Deere 220B Greens Mower Parts

*Cutting Unit
Reel & Bedknife*



| Item No | R&R Part No. | OEM Part No. | Description | Qty Req | Order Quantity |
|---------|------------------|------------------------------|-------------------------------------|---------|----------------|
| 51 | RN198341 | N198341 | Nut - Nyloc 7/8-14 | 1 | |
| 52 | RET14917 | ET14917 | Spacer | 1 | |
| 54 | RP44946 | P44946 | Bushing - Bronze | 2 | |
| 55 | RET11371 | ET11371 | Screw - Special | 2 | |
| 56 | R302-5 | JD7797, JD7842, JD7844 | Fitting - Grease | 4 | |
| 57 | RUC16469 | MT6952, UC16469 | Clamp | 2 | |
| 58 | R03M7222 | 03M7222 | Bolt - Carriage M6-1.0 x 20 | 2 | |
| 59 | R19M7866 | 19M7866 | Bolt - Flanged Hex M8-1.25 x 20 | 2 | |
| 60 | R14M7397 | 14M7397, 14M7463 | Locknut - 6mm x 1.0 ESNA Flanged | 2 | |
| 61 | RSW35OLUS | SW35OLUS | Chain Link - Offset #35 | 1 | |
| 62 | RSW35COUS | SW35COUS | Chain Link - Coupler #35 | 1 | |

All original equipment manufacturers names and part numbers are used for identification purposes only, and we are in no way implying that our products are original equipment parts. Prices subject to change without notice.