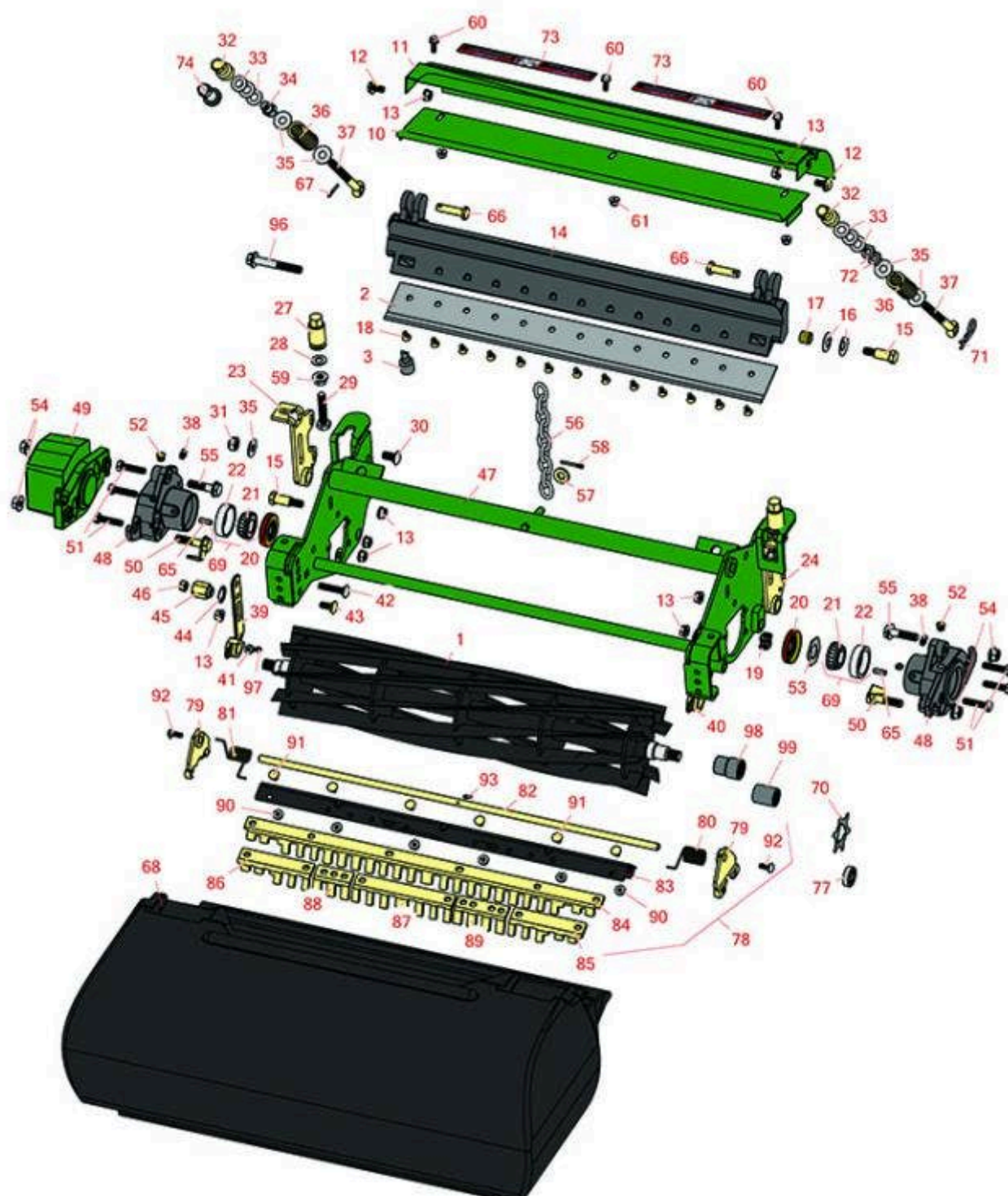




Replaces John Deere 2500E Riding Greens Mower Parts

Cutting Unit - Serial up to 030000
Reel & Bedknife



All original equipment manufacturers names and part numbers are used for identification purposes only, and we are in no way implying that our products are original equipment parts. Prices subject to change without notice.



Replaces John Deere 2500E Riding Greens Mower Parts

Cutting Unit - Serial up to 030000
Reel & Bedknife



Item No	R&R Part No.	OEM Part No.	Description	Qty Req	Order Quantity
---------	--------------	--------------	-------------	---------	----------------

R&R Reels, Lifetime Guaranteed

1	R101274	AMT2885, AMT538	Reel - 11 Blade - External Spline	1	
---	----------------	--------------------	-----------------------------------	---	--

Detail Description: R&R Reel blades are manufactured from high carbon-boron alloy steel and then hardened to RC46-49 to match the temper of our bedknives and original equipment bedknives. All R&R Reels are cylindrically ground on bearing surfaces and then relief ground. Reels are then precision computer balanced for extended bearing and reel life. R&R Products Reels are guaranteed against defects in material and workmanship for the life of the reel under normal use.:

1	RAET10826	AET10826, AET11347	Reel - 9 Blade - External Spline	1	
---	------------------	-----------------------	----------------------------------	---	--

Detail Description: R&R Reel blades are expertly crafted from premium high carbon-boron alloy steel, heat-treated to perfectly complement both R&R and OEM bedknives. Each reel undergoes precision cylindrical grinding on bearing surfaces, followed by relief grinding for optimal performance. Advanced computer balancing ensures extended reel and bearing life. Backed by our lifetime guarantee against defects in materials and craftsmanship under normal use, R&R Reels deliver unmatched durability and cutting precision you can trust.:

1	RAET11237	AET11237, AMT2883	Reel - 7 Blade Heavy Duty - External Spline	1	
---	------------------	----------------------	---	---	--

Detail Description: R&R Reel blades are expertly crafted from premium high carbon-boron alloy steel, heat-treated to perfectly complement both R&R and OEM bedknives. Each reel undergoes precision cylindrical grinding on bearing surfaces, followed by relief grinding for optimal performance. Advanced computer balancing ensures extended reel and bearing life. Backed by our lifetime guarantee against defects in materials and craftsmanship under normal use, R&R Reels deliver unmatched durability and cutting precision you can trust.:

R&R Bedknives, Lifetime Guaranteed

2	RET17767	ET17767, UC23562	Bedknife - High Cut 5/16	1	
---	-----------------	---------------------	--------------------------	---	--

Detail Description: R&R Bedknives are manufactured from high carbon-boron alloy steel and then hardened to RC46-49 to match the temper of our reel blades and original equipment reels. Bedknives are surface ground on the top and front edge and straightened three times before being packaged with oil for rust prevention. All R&R Bedknives now have an increased front edge grind for added life. All R&R Bedknives are guaranteed against defects in material and workmanship under normal use for the life of the part.:

2	RET17532	ET11066, ET17532	Bedknife - Fairway .189 Min	1	
---	-----------------	---------------------	-----------------------------	---	--

All original equipment manufacturers names and part numbers are used for identification purposes only, and we are in no way implying that our products are original equipment parts. Prices subject to change without notice.



Replaces John Deere 2500E Riding Greens Mower Parts

Cutting Unit - Serial up to 030000
Reel & Bedknife



Item No	R&R Part No.	OEM Part No.	Description	Qty Req	Order Quantity
---------	--------------	--------------	-------------	---------	----------------

Detail Description: R&R Bedknives are manufactured from high carbon-boron alloy steel and then hardened to RC46-49 to match the temper of our reel blades and original equipment reels. Bedknives are surface ground on the top and front edge and straightened three times before being packaged with oil for rust prevention. All R&R Bedknives now have an increased front edge grind for added life. All R&R Bedknives are guaranteed against defects in material and workmanship under normal use for the life of the part.:

2	RET17533	ET14402, ET17533, ET17767, MT4869, MT7351, UC18873	Bedknife - 22in Standard- .126 Min. HOC	1	
---	-----------------	---	---	---	--

Detail Description: R&R Bedknives are manufactured from high carbon-boron alloy steel and then hardened to RC46-49 to match the temper of our reel blades and original equipment reels. Bedknives are surface ground on the top and front edge and straightened three times before being packaged with oil for rust prevention. All R&R Bedknives now have an increased front edge grind for added life. All R&R Bedknives are guaranteed against defects in material and workmanship under normal use for the life of the part.:

2	RET17534	ET17534	Bedknife - 22in Tounament- .098 Min HOC	1	
---	-----------------	---------	---	---	--

Detail Description: R&R Bedknives are manufactured from high carbon-boron alloy steel and then hardened to RC46-49 to match the temper of our reel blades and original equipment reels. Bedknives are surface ground on the top and front edge and straightened three times before being packaged with oil for rust prevention. All R&R Bedknives now have an increased front edge grind for added life. All R&R Bedknives are guaranteed against defects in material and workmanship under normal use for the life of the part.:

2	RMT7351	ET17489, MT7351, UC19154, UC28163	Bedknife - 22in Lo-Cut .079 Min. HOC	1	
---	----------------	--	--------------------------------------	---	--

Detail Description: R&R Bedknives are manufactured from high carbon-boron alloy steel and then hardened to RC46-49 to match the temper of our reel blades and original equipment reels. Bedknives are surface ground on the top and front edge and straightened three times before being packaged with oil for rust prevention. All R&R Bedknives now have an increased front edge grind for added life. All R&R Bedknives are guaranteed against defects in material and workmanship under normal use for the life of the part.:

R&R Razor Tool Steel Bedknives, Lifetime Guaranteed

All original equipment manufacturers names and part numbers are used for identification purposes only, and we are in no way implying that our products are original equipment parts. Prices subject to change without notice.



Replaces John Deere 2500E Riding Greens Mower Parts

Cutting Unit - Serial up to 030000
Reel & Bedknife



Item No	R&R Part No.	OEM Part No.	Description	Qty Req	Order Quantity
---------	--------------	--------------	-------------	---------	----------------

2	R130130		Bedknife - Razor Tool Steel - 22 High Cut	1	
---	---------	--	---	---	--

Detail Description: R&R Razor bedknives are manufactured from premium alloy tool steel steel and then hardened to RC48-51 to match the temper of our Razor reel blades and original equipment premium series reels. Bedknives are surface ground on the top and front edge and specially packaged for rust prevention. All R&R Bedknives now have an increased front edge grind for added life. All R&R Bedknives are guaranteed against defects in material and workmanship under normal use for the life of the part. You can expect up to double the life over standard bedknives.:

2	R130116	MT4846, UC18877	Bedknife - Razor Tool Steel - 22 Tournament Cut	1	
---	---------	--------------------	---	---	--

Detail Description: R&R Razor bedknives are manufactured from premium alloy tool steel steel and then hardened to RC48-51 to match the temper of our Razor reel blades and original equipment premium series reels. Bedknives are surface ground on the top and front edge and specially packaged for rust prevention. All R&R Bedknives now have an increased front edge grind for added life. All R&R Bedknives are guaranteed against defects in material and workmanship under normal use for the life of the part. You can expect up to double the life over standard bedknives.:

2	R130115		Bedknife - Razor Tool Steel - 22 Micro Cut	1	
---	---------	--	--	---	--

Detail Description: R&R Razor bedknives are manufactured from premium alloy tool steel steel and then hardened to RC48-51 to match the temper of our Razor reel blades and original equipment premium series reels. Bedknives are surface ground on the top and front edge and specially packaged for rust prevention. All R&R Bedknives now have an increased front edge grind for added life. All R&R Bedknives are guaranteed against defects in material and workmanship under normal use for the life of the part. You can expect up to double the life over standard bedknives.:

Service Tools

3	R101278T		Bedknife Screw Driver Tool	0	
---	----------	--	----------------------------	---	--

Tech Note: Easily install and remove bed knife screws with the help of a ratchet. Tool manufactured with hardened alloy steel.:

Detail Description: Easily install and remove bed knife screws with the help of a ratchet. Tool manufactured with hardened alloy steel.:

Other Parts Available

10	RMT2127	MT2127	Shield - Grass	1	
----	---------	--------	----------------	---	--

All original equipment manufacturers names and part numbers are used for identification purposes only, and we are in no way implying that our products are original equipment parts. Prices subject to change without notice.



Replaces John Deere 2500E Riding Greens Mower Parts

Cutting Unit - Serial up to 030000
Reel & Bedknife



Item No	R&R Part No.	OEM Part No.	Description	Qty Req	Order Quantity
11	RAMT2495	AMT2495, AMT554	Shield - Grass	1	
12	R19M7865	19M7865	Bolt - Hex Washer M8 x 16	2	
13	R14M7298	14M7298	Nut - 8mm x 1.25 Flanged	10	
14	RMT2694	MT2694	Bed Bar	1	
15	RMT3016	MT3016	Bolt - Bed Bar	2	
16	RN168012	N168012	Washer - Spring	4	
17	RB30499	B30499	Bushing - Bed Bar	2	
18	R101278	21M7194	Screw - Bedknife	13	
19	RET14592	ET14592	Spring - Reel Bearing	1	
20	RET14566	ET14566	Seal - Reel	2	
21	R254-78	JD8188	Tapered Bearing Cone	2	
22	R254-79	JD8226	Cup - Bearing	2	
<i>Detail Description: Use R254-79M installation mandrel to properly install race.:</i>					
23	RAMT5112	AMT5112	Bracket - Roller RH Rear	1	
24	RAMT5113	AMT5113	Bracket - Roller LH Rear	1	
27	RMT6483	MT6483	Nut - Adjusting Rear Roller	2	
28	R453011	24M7096	Washer - Flat 3/8 SAE Y/Zinc	2	
29	R19M7383	19M7383	Bolt - Rear Roller Adj 55 mm Long	2	
29	R19M7385	19M7385	Bolt - Rear Roller Adj 70mm Long	2	
30	R03M7307	03M7307	Bolt - Carriage M10	2	
31	R14M7517	14M7517	Locknut - 10mm x 1.5 ESNA	2	

All original equipment manufacturers names and part numbers are used for identification purposes only, and we are in no way implying that our products are original equipment parts. Prices subject to change without notice.



Replaces John Deere 2500E Riding Greens Mower Parts

Cutting Unit - Serial up to 030000
Reel & Bedknife



Item No	R&R Part No.	OEM Part No.	Description	Qty Req	Order Quantity
32	RMT4991	MT4991	Nut - Adjusting Bedknife	2	
33	RET16679	ET16679	Washer - Spring	6	
34	RMT6486	MT6486	Nut - Bed Bar Adjusting	2	
35	R24H1307	24H1307	Washer - Flat 13/32 x 1 x 1/16	4	
36	RET11070	ET11070	Spring - Bed Bar	2	
37	RMT3074	MT3074	Eyebolt - Bed Bar	2	
38	R302-5	JD7797, JD7842, JD7844	Fitting - Grease	2	
39	RMT3015	MT3015	Bracket - RH - Extended	1	
<i>Tech Note: Use with 7 & 9 Blade Reel:</i>					
40	RMT3072	MT3072	Bracket - LH - Extended	1	
<i>Tech Note: Use with 7 & 9 Blade Reel:</i>					
39	RMT7259	MT7259	Bracket - RH	1	
<i>Tech Note: Use with 11 Blade Reel:</i>					
40	RMT7260	MT7260	Bracket - LH	1	
<i>Tech Note: Use with 11 Blade Reel:</i>					
41	R3219-1	14H860	Nut - 1/4-28	2	
42	R03M7188	03M7188	Bolt - Carriage M8 x 40	1	
43	R03M7184	03M7184	Bolt - Carriage M8	3	
44	R12M7052	12M7052	Washer - Rib Lock	1	
45	RMT3881	MT3881	Nut - Eccentric Front Roller Bkt	1	
46	R14M7166	14M7166	Locknut - 8mm x 1.25 ESNA	1	

All original equipment manufacturers names and part numbers are used for identification purposes only, and we are in no way implying that our products are original equipment parts. Prices subject to change without notice.



Replaces John Deere 2500E Riding Greens Mower Parts

Cutting Unit - Serial up to 030000
Reel & Bedknife



Item No	R&R Part No.	OEM Part No.	Description	Qty Req	Order Quantity
47	R130121	AMT1415	Frame - Cutting Unit	1	
48	RMT7294	MT2647, MT7294	Housing - Reel	2	
49	RMT6476	MT6476	Counterweight	1	
50	RAMT2261	AMT2261	Kit - Bolt w/Clip	2	
51	R19M8008	19M8008	Bolt - Hex HD M8-1.25 x 35	6	
52	R170714	E14814	Fitting - Pressure Relief	2	
53	RET16704	ET16704	Retainer	1	
54	RH135891	H135891	Locknut - 10mm x 1.5 Flanged 10.9	4	
<i>Detail Description: High Strength:</i>					
55	R19M7804	19M7804	Bolt - Flanged Hex M10-1.5 x 40	2	
56	RAMT1479	AMT1479	Chain - Link	1	
57	R24H1682	24H1682	Washer - 13/32 x 7/8 x 1/8	1	
58	R460028	11M7059, 460028	Pin - Cotter 1/8 x 1	1	
59	R14M7296	14M7296	Nut - 10mm x 1.5 Flanged	2	
60	R19M7775	19M7775	Bolt - Flanged Hex M6-1.0 x 16	3	
61	R14M7397	14M7397, 14M7463	Locknut - 6mm x 1.0 ESNA Flanged	3	
65	RR30587	30587, R30587	Pin - Dowell 1/4 Dia. x .75	4	
66	R45M7060	45M7060	Pin	2	
67	R11M7012	11M7012	Pin - Cotter 1/8 x 5/8	2	

All original equipment manufacturers names and part numbers are used for identification purposes only, and we are in no way implying that our products are original equipment parts. Prices subject to change without notice.



Replaces John Deere 2500E Riding Greens Mower Parts

Cutting Unit - Serial up to 030000
Reel & Bedknife



Item No	R&R Part No.	OEM Part No.	Description	Qty Req	Order Quantity
68	RMT6671	MT6671	Grass Basket	1	
<i>Detail Description:
Please note: Due to excessive air freight charges, this item will be shipped ground freight.:</i>					
69	R500534		Bearing - with Cup	0	
<i>Detail Description: Kit includes: 1 ea R254-78- Bearing Cone & R254-79 Bearing Cone:</i>					
70	RET14707	ET14707	Verti-Cut Blade - .025 x 2.375	0	
70	RET14707C		Verti-Cut Blade - .025 x 2.375 Carbide Tipped	0	
71	R130122		Clip - Hitch Pin	2	
72	R130123	130123	Nut - Hex 10mm x 1.0	4	
73	RMT6517	MT6517	Label - Warning	2	
74	RMT6990	MT6990	Nut - Adjusting	2	
77	RET16026	ET16026	Bearing	2	
78	R500559	BM18680, MT18680	Scraper Kit - Grooved Roller	1	
<i>Detail Description: Fits John Deere AET11262 & AMT2966 Grooved Roller Only:</i>					
79	RMT2407	MT2407	Bracket - Roller Scraper	2	
80	RET17629	ET17629	Spring - Torsion LH	1	
81	RET17630	ET17630	Spring - Torsion RH	1	
82	RET17757	ET11757, ET17757	Pin - Scraper	1	
83	R500571	MT2369	Bar - Scraper	1	
84	R500558		Scraper - Grooved Roller	1	
<i>Detail Description: 1 Piece Scraper fits OEM AET11262 & AMT2966 Grooved Roller:</i>					

All original equipment manufacturers names and part numbers are used for identification purposes only, and we are in no way implying that our products are original equipment parts. Prices subject to change without notice.



Replaces John Deere 2500E Riding Greens Mower Parts

*Cutting Unit - Serial up to 030000
Reel & Bedknife*



Item No	R&R Part No.	OEM Part No.	Description	Qty Req	Order Quantity
85	RMT5159	MT5159	Scraper - Fits J.D. LH End	1	
86	RMT5158	MT5158	Scraper - Fits J.D. RH End	1	
87	RMT2340	MT2340	Scraper - Fits J.D. Center	1	
88	RMT2342	MT2342	Section - Grooved Scraper 3 Tooth	1	
89	RMT2341	MT2341	Section - Grooved Scraper 4 Tooth	1	
90	R14M7303	14M7303	Nut - 6mm x 1.0 Flanged	6	
91	R03M7191	03M7191	Bolt - Carriage M10 x 25	6	
92	R03M7221	03M7221	Bolt - Carriage M6 x 16	2	
93	R34M7010	34M7010	Pin - Spring	1	
96	R19M7809	19M7809	Screw	2	
97	R22H1004	19H3003	Screw - Set 1/4-28 x 1/2	2	
98	RMT7067	MT7067	Coupling - Splined 9/11 Tooth	1	
99	RTCA12581	TCA12581	Coupling - Reel 11 Tooth	1	

All original equipment manufacturers names and part numbers are used for identification purposes only, and we are in no way implying that our products are original equipment parts. Prices subject to change without notice.