

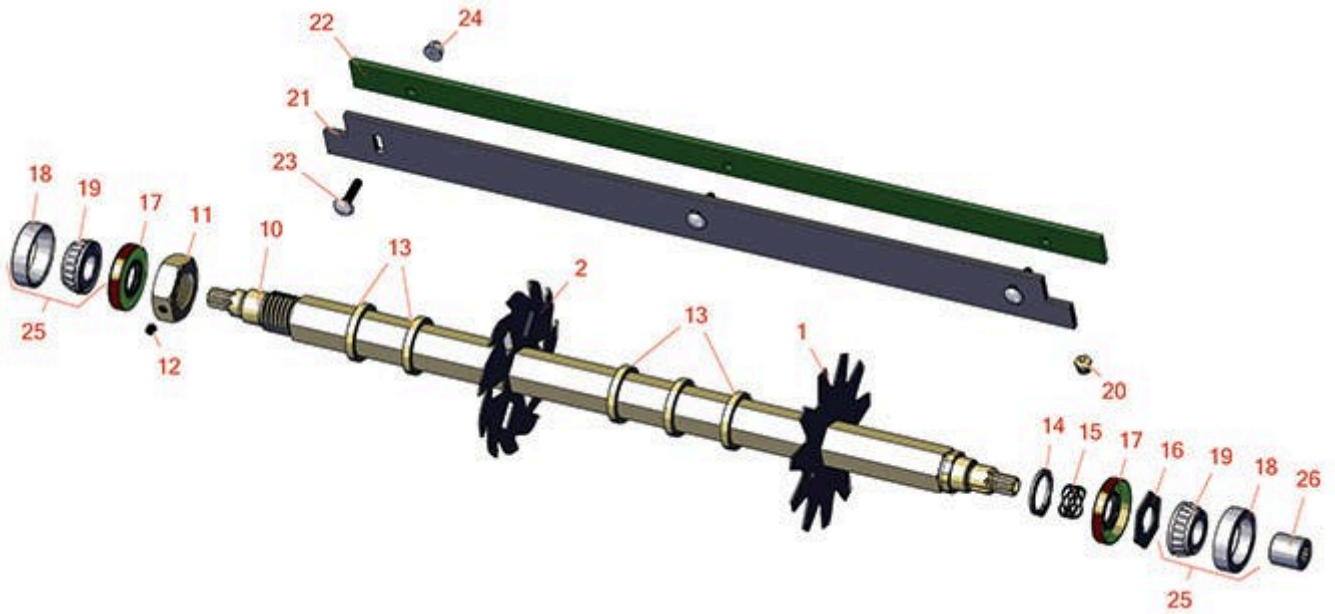
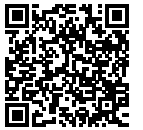


# Replaces John Deere 3215 Reel Mower

## Parts

Medium Verti-Cut Unit

Verti-Cut Reel & Frame



All original equipment manufacturers names and part numbers are used for identification purposes only, and we are in no way implying that our products are original equipment parts. Prices subject to change without notice.



# Replaces John Deere 3215 Reel Mower Parts

Medium Verti-Cut Unit  
Verti-Cut Reel & Frame



Item No	R&R Part No.	OEM Part No.	Description	Qty Req	Order Quantity
---------	--------------	--------------	-------------	---------	----------------

## Verti-Cut Blades

1	<b>RAMT2703</b>	AMT2703, ET17719	Blade - Vertical Mower	27	
2	<b>R150209C</b>	TCU26776	Verti-Cut Blade - Carbide Tipped 2mm	27	

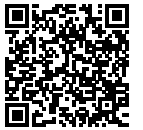
## Other Parts Available

10	<b>RET17715</b>	ET17715	Shaft - Vertical Mower	1	
11	<b>RET17053</b>	ET17053	Nut - 1-1/8-7 Jam Incl Set Screw	1	
12	<b>R3245-35</b>	22H841	Screw - Set 1/4-28 x 1/4	1	
13	<b>RET17713</b>	ET17713	Spacer - Vertical Mower Shaft	80	
14	<b>RC17964</b>	C17964	Ring - Retaining HD	1	
15	<b>RET14592</b>	ET14592	Spring - Reel Bearing	1	
16	<b>RET16704</b>	ET16704	Retainer	1	
17	<b>RET14566</b>	ET14566	Seal - Reel	2	
18	<b>R254-79</b>	JD8226	Cup - Bearing	2	
<i>Tech Note: Use R254-79M installation mandrel to properly install race.:</i>					
19	<b>R254-78</b>	JD8188	Tapered Bearing Cone	2	
20	<b>R170714</b>	E14814	Fitting - Pressure Relief	2	
21	<b>RET17914</b>	ET17914	Rubber Isolator - Verticut	1	
22	<b>RAMT2704</b>	AMT2704, MT169	Strap - Verticut Shield	1	
23	<b>R03M7232</b>	03M7232	Bolt - Carriage M6-1.0 x 25	3	
24	<b>R14M7303</b>	14M7303	Nut - 6mm x 1.0 Flanged	3	
25	<b>R500534</b>		Bearing - with Cup	2	

All original equipment manufacturers names and part numbers are used for identification purposes only, and we are in no way implying that our products are original equipment parts. Prices subject to change without notice.



# Replaces John Deere 3215 Reel Mower Parts



*Medium Verti-Cut Unit  
Verti-Cut Reel & Frame*

Item No	R&R Part No.	OEM Part No.	Description	Qty Req	Order Quantity
26	<b>RAET11038</b>	AET11038, AET11039, AT11038	Coupler - V-Cut 8 Tooth	1	

All original equipment manufacturers names and part numbers are used for identification purposes only, and we are in no way implying that our products are original equipment parts. Prices subject to change without notice.