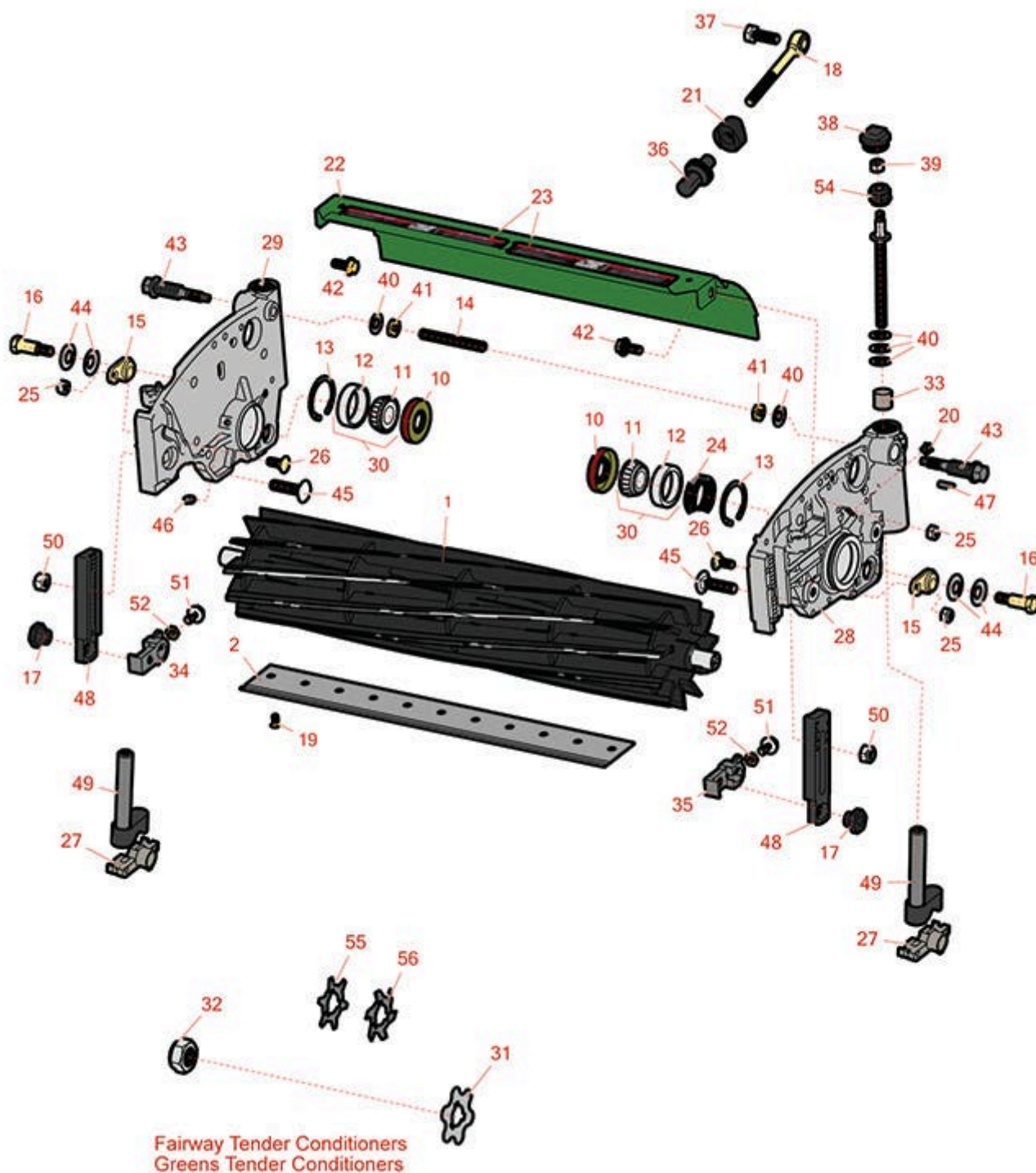




Replaces John Deere 8000A E-Cut Hybrid Reel Mower Parts

Cutting Unit
Reel & Bedknife



All original equipment manufacturers names and part numbers are used for identification purposes only, and we are in no way implying that our products are original equipment parts. Prices subject to change without notice.



Replaces John Deere 8000A E-Cut Hybrid Reel Mower Parts

Cutting Unit
Reel & Bedknife



| Item No | R&R Part No. | OEM Part No. | Description | Qty Req | Order Quantity |
|---------|--------------|--------------|-------------|---------|----------------|
|---------|--------------|--------------|-------------|---------|----------------|

R&R Reels, Lifetime Guaranteed

| | | | | |
|---|------------------|----------|----------------|---|
| 1 | RTCA19348 | TCA19348 | Reel - 7 Blade | 1 |
|---|------------------|----------|----------------|---|

Detail Description: R&R Reel blades are expertly crafted from premium high carbon-boron alloy steel, heat-treated to perfectly complement both R&R and OEM bedknives. Each reel undergoes precision cylindrical grinding on bearing surfaces, followed by relief grinding for optimal performance. Advanced computer balancing ensures extended reel and bearing life. Backed by our lifetime guarantee against defects in materials and craftsmanship under normal use, R&R Reels deliver unmatched durability and cutting precision you can trust.:

| | | | | |
|---|------------------|----------|-----------------|---|
| 1 | RTCA19349 | TCA19349 | Reel - 11 Blade | 1 |
|---|------------------|----------|-----------------|---|

Detail Description: R&R Reel blades are expertly crafted from premium high carbon-boron alloy steel, heat-treated to perfectly complement both R&R and OEM bedknives. Each reel undergoes precision cylindrical grinding on bearing surfaces, followed by relief grinding for optimal performance. Advanced computer balancing ensures extended reel and bearing life. Backed by our lifetime guarantee against defects in materials and craftsmanship under normal use, R&R Reels deliver unmatched durability and cutting precision you can trust.:

| | | | | |
|---|------------------|----------|-----------------|---|
| 1 | RTCA23622 | TCA23622 | Reel - 14 Blade | 1 |
|---|------------------|----------|-----------------|---|

Detail Description: R&R Reel blades are expertly crafted from premium high carbon-boron alloy steel, heat-treated to perfectly complement both R&R and OEM bedknives. Each reel undergoes precision cylindrical grinding on bearing surfaces, followed by relief grinding for optimal performance. Advanced computer balancing ensures extended reel and bearing life. Backed by our lifetime guarantee against defects in materials and craftsmanship under normal use, R&R Reels deliver unmatched durability and cutting precision you can trust.:

Bedknives

| | | | | |
|---|----------------|-------------------------------|-----------------------|---|
| 2 | RMT4846 | MT4846, MT4906, UC18877 | Bedknife - Tournament | 1 |
|---|----------------|-------------------------------|-----------------------|---|

Detail Description: R&R Bedknives are manufactured from high carbon-boron alloy steel and then hardened to RC46-49 to match the temper of our reel blades and original equipment reels. Bedknives are surface ground on the top and front edge and straightened three times before being packaged with oil for rust prevention. All R&R Bedknives now have an increased front edge grind for added life. All R&R Bedknives are guaranteed against defects in material and workmanship under normal use for the life of the part.:

| | | | | |
|---|----------------|-------------------|---|---|
| 2 | RMT7350 | MT6944, MT7350 | Bedknife - 22in Low Cut Min HOC .079 | 0 |
|---|----------------|-------------------|---|---|

All original equipment manufacturers names and part numbers are used for identification purposes only, and we are in no way implying that our products are original equipment parts. Prices subject to change without notice.



Replaces John Deere 8000A E-Cut Hybrid Reel Mower Parts

Cutting Unit
Reel & Bedknife



| Item No | R&R Part No. | OEM Part No. | Description | Qty Req | Order Quantity |
|---------|--------------|--------------|-------------|---------|----------------|
|---------|--------------|--------------|-------------|---------|----------------|

Detail Description: R&R Bedknives are manufactured from high carbon-boron alloy steel and then hardened to RC46-49 to match the temper of our reel blades and original equipment reels. Bedknives are surface ground on the top and front edge and straightened three times before being packaged with oil for rust prevention. All R&R Bedknives now have an increased front edge grind for added life. All R&R Bedknives are guaranteed against defects in material and workmanship under normal use for the life of the part.:

| | | | | | |
|---|----------------|-------------------------------|------------------------------------|---|--|
| 2 | RMT6944 | MT6944, MT7350, UC19156 | Bedknife - Low Cut Min HOC .079 | 0 | |
|---|----------------|-------------------------------|------------------------------------|---|--|

Detail Description: R&R Bedknives are manufactured from high carbon-boron alloy steel and then hardened to RC46-49 to match the temper of our reel blades and original equipment reels. Bedknives are surface ground on the top and front edge and straightened three times before being packaged with oil for rust prevention. All R&R Bedknives now have an increased front edge grind for added life. All R&R Bedknives are guaranteed against defects in material and workmanship under normal use for the life of the part.:

Other Parts Available

| | | | | | |
|---|-----------------|-----------------------|----------------------|----|--|
| 10 | RET14566 | ET14566 | Seal - Reel | 2 | |
| 11 | R254-78 | JD8188 | Tapered Bearing Cone | 2 | |
| 12 | R254-79 | JD8226 | Cup - Bearing | 2 | |
| <i>Detail Description: Use R254-79M installation mandrel to properly install race.:</i> | | | | | |
| 13 | R40M7226 | 40M1862, 40M7226 | Ring - Retaining | 2 | |
| 14 | RTC25398 | TCU25398 | Compression Spring | 1 | |
| 15 | RTC24334 | TCU24334 | Retainer | 2 | |
| 16 | RMT3016 | MT3016 | Bolt - Bed Bar | 2 | |
| 17 | RTC28635 | TCU24555, TCU28635 | Eccentric | 2 | |
| 18 | RTC25223 | TCU25223, TCU30798 | Spherical Rod End | 2 | |
| 19 | R101278 | 21M7194 | Screw - Bedknife | 11 | |

All original equipment manufacturers names and part numbers are used for identification purposes only, and we are in no way implying that our products are original equipment parts. Prices subject to change without notice.



Replaces John Deere 8000A E-Cut Hybrid Reel Mower Parts

Cutting Unit
Reel & Bedknife



| Item No | R&R Part No. | OEM Part No. | Description | Qty Req | Order Quantity |
|---|------------------|-----------------------|-----------------------------------|---------|----------------|
| 20 | R170714 | E14814 | Fitting - Pressure Relief | 2 | |
| 21 | RTC25394 | TCU25394, TCU27453 | Base | 2 | |
| 22 | RTCA18643 | TCA18643 | Shield - (w/Labels) | 1 | |
| 23 | RMT6517 | MT6517 | Label - Warning | 2 | |
| 24 | RTC23880 | TCU23880, TCU28964 | Compression Spring - Reel Bearing | 1 | |
| 25 | RH137328 | H137328 | Locknut | 2 | |
| 26 | R03M7184 | 03M7184 | Bolt - Carriage M8 | 2 | |
| 27 | RTC28987 | TCU25228, TCU28987 | Half Clamp - Roller Bkt | 2 | |
| 28 | RTC35637 | TCU24427, TCU35637 | Panel - LH | 1 | |
| 29 | RTC35638 | TCU24426, TCU35638 | Panel - RH | 1 | |
| 30 | R500534 | | Bearing - with Cup | 2 | |
| <i>Detail Description: Kit includes: 1 ea R254-78- Bearing Cone & R254-79 Bearing Cone:</i> | | | | | |
| 31 | RMT2624 | MT2624 | Knife - Greens Conditioner | 30 | |
| 32 | RN198341 | N198341 | Nut - Nyloc 7/8-14 | 1 | |
| 33 | RMT74 | MT74 | Bushing - Roller Bkt | 2 | |
| 34 | RUC16109 | TCU24461, UC16109 | Bracket - RH | 1 | |
| 35 | RUC18211 | TCU24461, UC18211 | Bracket - LH | 1 | |
| 36 | RUC16137 | TCU24955, UC16137 | Adjuster | 2 | |

All original equipment manufacturers names and part numbers are used for identification purposes only, and we are in no way implying that our products are original equipment parts. Prices subject to change without notice.



Replaces John Deere 8000A E-Cut Hybrid Reel Mower Parts

Cutting Unit
Reel & Bedknife



| Item No | R&R Part No. | OEM Part No. | Description | Qty Req | Order Quantity |
|---------|--------------|------------------------------|---|---------|----------------|
| 37 | R19M7168 | 19M7168 | Bolt - M10-1.5 x 30 mm Hex Head Class 8.8 | 2 | |
| 38 | RUC16102 | TCU24949, UC16102 | Cap | 2 | |
| 39 | RM148268 | M148268 | Lock Nut | 2 | |
| 40 | RET16679 | ET16679 | Washer - Spring | 8 | |
| 41 | R14M7152 | 14M7152 | Nut - 10mm x 1.5 Jam | 2 | |
| 42 | R19M7866 | 19M7866 | Bolt - Flanged Hex M8-1.25 x 20 | 2 | |
| 43 | RTC26458 | TCU26458 | Worm Gear | 2 | |
| 44 | RN168012 | N168012 | Washer - Spring | 4 | |
| 45 | R03M7194 | 03M7194 | Bolt | 2 | |
| 46 | R302-5 | JD7797, JD7842, JD7844 | Fitting - Grease | 4 | |
| 47 | RR30587 | 30587, R30587 | Pin - Dowell 1/4 Dia. x .75 | 4 | |
| 48 | RUC16108 | TCU24460, UC16108 | Bracket | 2 | |
| 49 | RAUC13512 | AUC13512, TCA18706 | Adjuster | 2 | |
| 50 | R14M7517 | 14M7517 | Locknut - 10mm x 1.5 ESNA | 6 | |
| 51 | R33114-016 | 19M7162 | Bolt - Hx HD 8mm x 1.25 x 15 | 2 | |
| 52 | R14M7151 | 14M7151 | Nut - Jam Roller Adj | 2 | |
| 54 | RTC40491 | TCU24683, TCU40491 | Worm Gear | 2 | |
| 55 | RET14707 | ET14707 | Verti-Cut Blade - .025 x 2.375 | 57 | |

All original equipment manufacturers names and part numbers are used for identification purposes only, and we are in no way implying that our products are original equipment parts. Prices subject to change without notice.



Replaces John Deere 8000A E-Cut Hybrid Reel Mower Parts

*Cutting Unit
Reel & Bedknife*



| Item No | R&R Part No. | OEM Part No. | Description | Qty Req | Order Quantity |
|---------|--------------|--------------|---|---------|----------------|
| 56 | RET14707C | | Verti-Cut Blade - .025 x 2.375 Carbide Tipped | 57 | |

All original equipment manufacturers names and part numbers are used for identification purposes only, and we are in no way implying that our products are original equipment parts. Prices subject to change without notice.