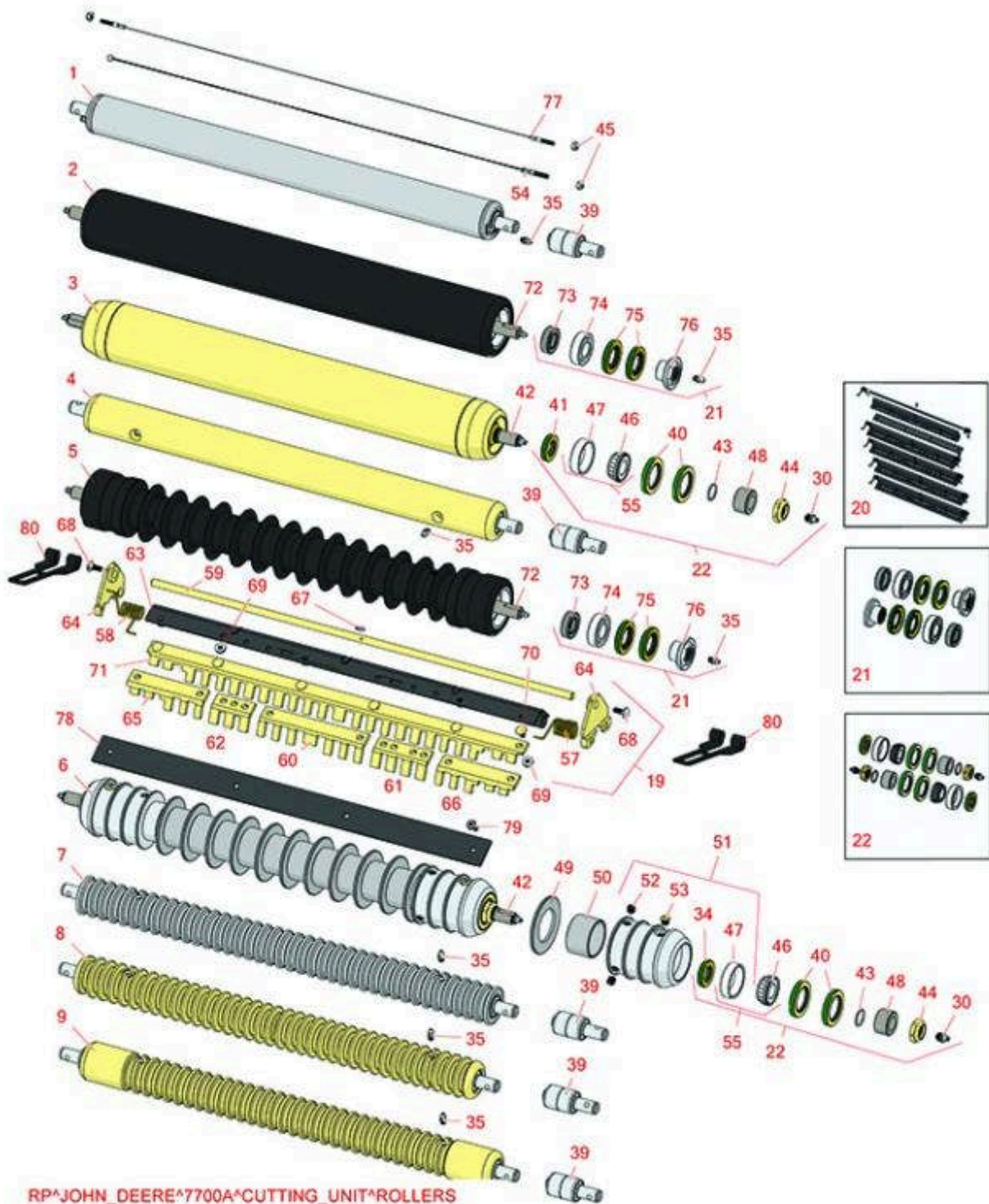




# Replaces John Deere 8700A Reel Mower

## Parts

Cutting Unit  
Rollers



All original equipment manufacturers names and part numbers are used for identification purposes only, and we are in no way implying that our products are original equipment parts. Prices subject to change without notice.



# Replaces John Deere 8700A Reel Mower

## Parts

Cutting Unit  
Rollers



Item No	R&R Part No.	OEM Part No.	Description	Qty Req	Order Quantity
---------	--------------	--------------	-------------	---------	----------------

### R&R Rollers

1	<b>RAET10111</b>	AET10111, AMT2876	Roller - Smooth Tubular Steel	1	
---	------------------	----------------------	-------------------------------	---	--

*Tech Note: This tubular steel roller uses greasable "water-pump" style bearings.:*

2	<b>R1203825</b>		Roller - Fusion Smooth UHMW Polyethylene	1	
---	-----------------	--	--	---	--

*Tech Note: Fusion Rollers combine the best features of our UHMW plastic rollers with a heavy-duty internal bearing system. Machined from solid UHMW plastic that prevents build-up of debris. This roller turns on precision stainless ball bear... <Click Part# for more>:*

3	<b>RAET11263</b>	AET11263, AMT2967	Roller - Smooth Tubular Steel	1	
---	------------------	----------------------	-------------------------------	---	--

*Tech Note: Constructed with a through shaft, this heavy duty roller uses greasable tapered bearings for extended life.:*

4	<b>RAMT1442</b>	AMT1442, AMT2878	Roller - Smooth Solid Steel	1	
---	-----------------	---------------------	-----------------------------	---	--

*Tech Note: Machined from solid steel, this heavy weight roller uses greasable "water-pump" style bearings.:*

5	<b>R1203820</b>	1203752	Roller - Fusion Grooved UHMW Polyethylene	1	
---	-----------------	---------	---	---	--

*Tech Note: Fusion Rollers combine the best features of our UHMW plastic rollers with a heavy-duty internal bearing system. Machined from solid UHMW plastic that prevents build-up of debris. This roller has a patented deep groove design and ... <Click Part# for more>:*

6	<b>R500512</b>	AMT2966, BM25317	Roller - Grooved Repairable Steel	0	
---	----------------	---------------------	-----------------------------------	---	--

*Tech Note: Constructed with a through shaft and greasable ball bearings. This roller can be repaired by unscrewing the ends and replacing the series of washers and spacers.:*

7	<b>RAMT1061</b>	AET10557, AMT1061, AMT2877	Roller - Grooved Machined Solid Steel	1	
---	-----------------	----------------------------------	---------------------------------------	---	--

*Tech Note: Machined from solid steel, this heavy weight roller uses greasable "water-pump" style bearings.:*

All original equipment manufacturers names and part numbers are used for identification purposes only, and we are in no way implying that our products are original equipment parts. Prices subject to change without notice.



# Replaces John Deere 8700A Reel Mower

## Parts

Cutting Unit  
Rollers



Item No	R&R Part No.	OEM Part No.	Description	Qty Req	Order Quantity
8	<b>RAET10954</b>	AET10954, AMT2875, AMT2879	Roller - Grooved Machined Solid Steel	1	
<i>Tech Note: Machined from solid steel, this heavy weight roller uses greasable "water-pump" style bearings.:</i>					
9	<b>RAMT1443</b>	AMT1443, AMT2879	Roller - Grooved Machined Solid Steel	1	
<i>Tech Note: Machined from solid steel, this heavy weight roller uses greasable "water-pump" style bearings. Extended length body.:</i>					
<b>Overhaul Kits</b>					
19	<b>R500573</b>		Scrapers Kit - SET/5	1	
<i>Tech Note: Fits R&amp;R R500512 Roller Only &amp; Incl R500572 Scraper:</i>					
19	<b>R500559</b>	BM18680, MT18680	Scrapers Kit - Grooved Roller	1	
<i>Tech Note: Fits John Deere AET11262 &amp; AMT2966 Grooved Roller Only:</i>					
20	<b>RBM17684</b>	BM17684	Scrapers Kit - Solid Roller SET/5	1	
<i>Tech Note: Includes 20 ea: R03M7221 Bolt, R14M7303 Nut; 5 ea: R34M7010 Pin, R500571 Scraper Bar, RET17629 LH Spring, RET17630 RH Spring, RET17757 Pin, RMT2595 Scraper Blade:</i>					
21	<b>R114-5430</b>		Overhaul Kit - Roller	1	
<i>Tech Note: Includes 4 ea.: R112-7494 Seals; 2 ea.: R302-5 Grease Zerks, R114-3717 Seals, R112-5290 Bearings &amp; R114-3745 Locknuts:</i>					
22	<b>RAET10632</b>	AET10632	Overhaul Kit - Roller	1	
<i>Tech Note: Includes 4 ea: RET15755 Seal; 2 ea: R237-54 O-Ring, R253-122 Seal, R254-78 Bearing, R254-79 Cup, R3296-15 Locknut, R471219 Grease Zerk, RET15726 Sleeve, RET15756 Seal:</i>					
<b>Other Parts Available</b>					
30	<b>R471219</b>	471219, JD7759, JD7798	Zerk - Grease	2	

All original equipment manufacturers names and part numbers are used for identification purposes only, and we are in no way implying that our products are original equipment parts. Prices subject to change without notice.



# Replaces John Deere 8700A Reel Mower

## Parts

Cutting Unit  
Rollers



Item No	R&R Part No.	OEM Part No.	Description	Qty Req	Order Quantity
34	<b>R253-122</b>	253-122	Seal	2	
35	<b>R302-5</b>	JD7797, JD7842, JD7844	Fitting - Grease	2	
39	<b>RAA35741</b>	AA35741, AET10129, TCA22836	Bearing	2	
<i>Tech Note: 1/4" Side Hole:</i>					
40	<b>RET15755</b>	ET15755	Seal - Oil	4	
41	<b>RET15756</b>	ET15756, MT1739, MT739	Seal	2	
42	<b>RET17515</b>	ET17515	Shaft - Roller	1	
43	<b>R237-54</b>	U46731, U6731	O-Ring - Small	2	
44	<b>R3296-15</b>	N101345	Locknut - 3/4-16 Nylon Jam	2	
45	<b>RU45916</b>	14M7298, U45916	Locknut - 10-24 ESNA	2	
46	<b>R254-78</b>	JD8188	Tapered Bearing Cone	2	
47	<b>R254-79</b>	JD8226	Cup - Bearing	2	
<i>Tech Note: Use R254-79M installation mandrel to properly install race.:</i>					
48	<b>RET15726</b>	ET15726, RET15726	Sleeve - Wear Hardened	2	
49	<b>R150673</b>		Washer - 3 Repairable Roller	11	
50	<b>R150676</b>		Spacer - 2-3/4 Dia x 1-1/4 L	10	
51	<b>R500511</b>		Roller End - Threaded 3	2	
52	<b>R150691</b>		Screw - Set Nyloc 3/8-16 x 3/8	4	

All original equipment manufacturers names and part numbers are used for identification purposes only, and we are in no way implying that our products are original equipment parts. Prices subject to change without notice.



# Replaces John Deere 8700A Reel Mower

## Parts

Cutting Unit  
Rollers



Item No	R&R Part No.	OEM Part No.	Description	Qty Req	Order Quantity
53	<b>R170714</b>	E14814	Fitting - Pressure Relief	2	
54	<b>RAET10139</b>	AET10139	Cable - Roller Scraper	1	
55	<b>R500534</b>		Bearing - with Cup	2	
57	<b>RET17629</b>	ET17629	Spring - Torsion LH	1	
58	<b>RET17630</b>	ET17630	Spring - Torsion RH	1	
59	<b>RET17757</b>	ET11757, ET17757	Pin - Scraper	1	
60	<b>RMT2340</b>	MT2340	Scraper - Fits J.D. Center	1	
61	<b>RMT2341</b>	MT2341	Section - Grooved Scraper 4 Tooth	1	
62	<b>RMT2342</b>	MT2342	Section - Grooved Scraper 3 Tooth	1	
63	<b>R500571</b>	MT2369	Bar - Scraper	1	
64	<b>RMT2407</b>	MT2407	Bracket - Roller Scraper	2	
65	<b>RMT5158</b>	MT5158	Scraper - Fits J.D. RH End	1	
66	<b>RMT5159</b>	MT5159	Scraper - Fits J.D. LH End	1	
67	<b>R34M7010</b>	34M7010	Pin - Spring	1	
68	<b>R03M7221</b>	03M7221	Bolt - Carriage M6 x 16	14	
69	<b>R14M7303</b>	14M7303	Nut - 6mm x 1.0 Flanged	14	
70	<b>R03M7251</b>	03M7251	Bolt - Gr. Roller Scraper	15	
71	<b>R500558</b>		Scraper - Grooved Roller	1	
<i>Tech Note: 1 Piece Scraper fits OEM AET11262 &amp; AMT2966 Grooved Roller:</i>					
71	<b>R500572</b>		Scraper - Fits R500512 Only	1	
72	<b>R1203821</b>		Shaft - Fusion Roller	1	

All original equipment manufacturers names and part numbers are used for identification purposes only, and we are in no way implying that our products are original equipment parts. Prices subject to change without notice.



# Replaces John Deere 8700A Reel Mower

## Parts

*Cutting Unit  
Rollers*



Item No	R&R Part No.	OEM Part No.	Description	Qty Req	Order Quantity
73	<b>R114-3717</b>		Seal	2	
74	<b>R112-5290</b>		Bearing - Stainless	2	
75	<b>R112-7494</b>		Seal	4	
76	<b>R114-3745</b>		Locknut - Bearing - Stainless	2	
77	<b>RTCA19566</b>	TCA19566	Cable - Smooth Roller Scraper	1	
78	<b>RMT2595</b>	MT2595, MT2895	Scraper Blade - Solid Roller	5	
79	<b>R21M7246</b>	21M7246	Screw	15	
80	<b>RTC26998</b>	TCU26998	Panel	2	

All original equipment manufacturers names and part numbers are used for identification purposes only, and we are in no way implying that our products are original equipment parts. Prices subject to change without notice.