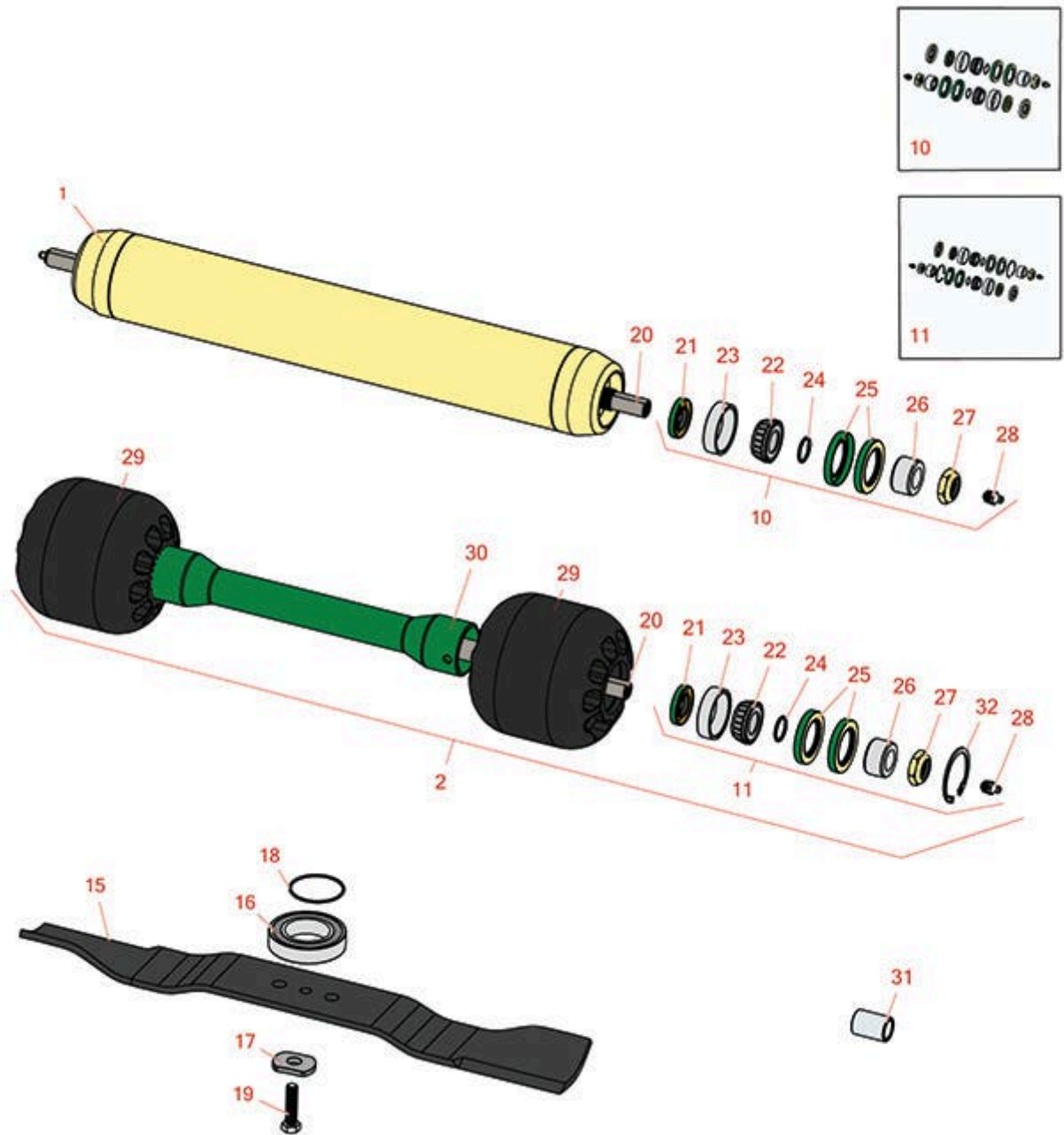




# Replaces John Deere 8800 Rotary Mower Parts

Rotary Cutting Unit - Serial 020001 & up  
Rotary Cutting Unit



All original equipment manufacturers names and part numbers are used for identification purposes only, and we are in no way implying that our products are original equipment parts. Prices subject to change without notice.



# Replaces John Deere 8800 Rotary Mower Parts

Rotary Cutting Unit - Serial 020001 & up  
Rotary Cutting Unit



| Item No   | R&R Part No.     | OEM Part No.                 | Description                                   | Qty Req | Order Quantity |
|---|------------------|------------------------------|---|---------|----------------|
| 1   | <b>RTCA16183</b> | TCA16183                     | Roller - Rear - Solid - HD Steel              | 1       |                |
| 2   | <b>RTCA26180</b> | TCA19028,<br>TCA26180        | Roller Assy                                   | 1       |                |
| <b>Overhaul Kit</b>   |                  |                              |   |         |                |
| 10  | <b>RAET10632</b> | AET10632                     | Overhaul Kit - Roller                         | 0       |                |
| <i>Tech Note: Includes 4 ea: RET15755 Seal; 2 ea: R237-54 O-Ring, R253-122 Seal, R254-78 Bearing, R254-79 Cup, R3296-15 Locknut, R471219 Grease Zerk, RET15726 Sleeve, RET15756 Seal:</i> |                  |                              |   |         |                |
| 11  | <b>R500578</b>   |                              | Overhaul Kit - Roller                         | 0       |                |
| <b>Other Parts Available</b>  |                  |                              |   |         |                |
| 15  | <b>R500585</b>   | GC00175                      | Mower Blade - 20.75 in Low Lift w/Hard Facing | 1       |                |
| 16  | <b>RJD8532</b>   | JD8532                       | Ball Bearing                                  | 1       |                |
| 17  | <b>RM111784</b>  | M111784                      | Washer  | 1       |                |
| 18  | <b>RH142234</b>  | H142234                      | O - Ring                                      | 1       |                |
| 19  | <b>R323-8</b>    | 19H2633                      | Bolt - Hex HD 3/8-16 x 1-1/2 GR8              | 1       |                |
| 20  | <b>RTC20818</b>  | TCU20818                     | Shaft - Roller                                | 1       |                |
| 21  | <b>RET15756</b>  | ET15756,<br>MT1739,<br>MT739 | Seal  | 2       |                |
| 22  | <b>R254-78</b>   | JD8188                       | Tapered Bearing Cone                          | 2       |                |
| 23  | <b>R254-79</b>   | JD8226                       | Cup - Bearing                                 | 2       |                |
| <i>Tech Note: Use R254-79M installation mandrel to properly install race.:</i>  |                  |                              |   |         |                |
| 24  | <b>R237-54</b>   | U46731,<br>U6731             | O-Ring - Small                                | 2       |                |

All original equipment manufacturers names and part numbers are used for identification purposes only, and we are in no way implying that our products are original equipment parts. Prices subject to change without notice.



# Replaces John Deere 8800 Rotary Mower Parts

*Rotary Cutting Unit - Serial 020001 & up  
Rotary Cutting Unit*



| Item No | R&R Part No.     | OEM Part No.                 | Description                | Qty Req | Order Quantity |
|---------|------------------|------------------------------|----------------------------|---------|----------------|
| 25      | <b>RET15755</b>  | ET15755                      | Seal - Oil                 | 4       |                |
| 26      | <b>RET15726</b>  | ET15726,<br>RET15726         | Sleeve - Wear Hardened     | 2       |                |
| 27      | <b>R3296-15</b>  | N101345                      | Locknut - 3/4-16 Nylon Jam | 2       |                |
| 28      | <b>R471219</b>   | 471219,<br>JD7759,<br>JD7798 | Zerk - Grease              | 2       |                |
| 29      | <b>RTC38614</b>  | TCU38614                     | Roller - Front Gauge       | 2       |                |
| 29      | <b>RTC25955</b>  | TCU25955                     | Roller - Front Gauge       | 2       |                |
| 30      | <b>RTCA26181</b> | TCA19375,<br>TCA26181        | Spacer - Axle              | 1       |                |
| 31      | <b>RTC27014</b>  | TCU27014                     | Bushing                    | 4       |                |
| 32      | <b>R40M1863</b>  | 40M1863                      | Ring - Snap                | 2       |                |

All original equipment manufacturers names and part numbers are used for identification purposes only, and we are in no way implying that our products are original equipment parts. Prices subject to change without notice.