

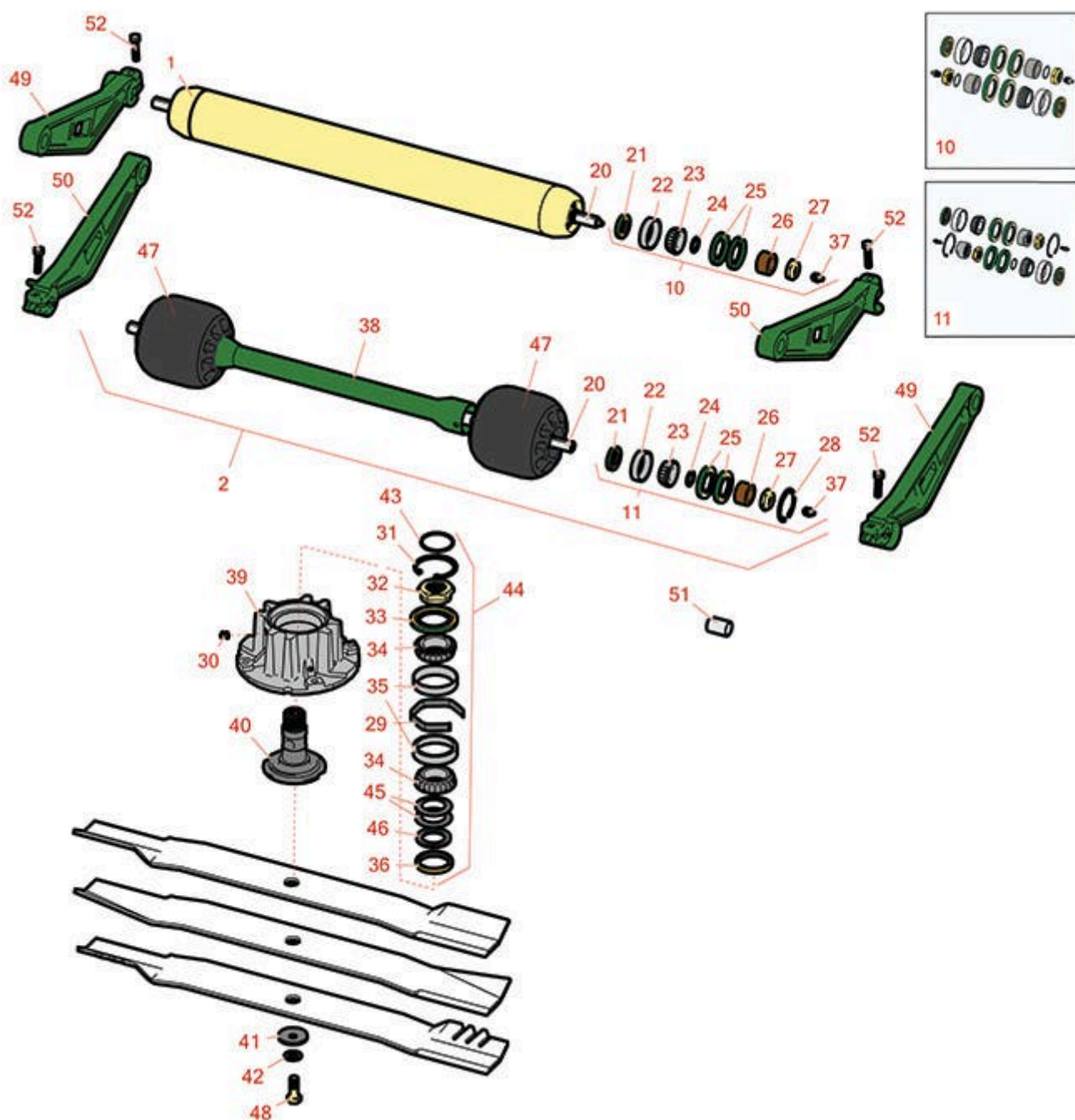


Replaces John Deere 9009A Rotary

Mower Parts

Rotary Cutting Unit

Rotary Cutting Unit



All original equipment manufacturers names and part numbers are used for identification purposes only, and we are in no way implying that our products are original equipment parts. Prices subject to change without notice.



Replaces John Deere 9009A Rotary

Mower Parts

Rotary Cutting Unit

Rotary Cutting Unit



Item No	R&R Part No.	OEM Part No.	Description	Qty Req	Order Quantity
---------	--------------	--------------	-------------	---------	----------------

Rollers

1	RTCA25970	RTCA25970, TCA25970	Roller Assy	5	
2	RTCA25911	TCA25911	Roller - Front - 27 in Units	5	

Overhaul Kits and Service Tools

10	RAET10632	AET10632	Overhaul Kit - Roller	5	
<i>Detail Description: Includes 4 ea: RET15755 Seal; 2 ea: R237-54 O-Ring, R253-122 Seal, R254-78 Bearing, R254-79 Cup, R3296-15 Locknut, R471219 Grease Zerk, RET15726 Sleeve, RET15756 Seal;</i>					
11	R500578		Overhaul Kit - Roller	5	

Other Parts Available

20	RTC39718	TCU39718	Shaft - Roller - 29 in	10	
21	RET15756	ET15756, MT1739, MT739	Seal	20	
22	R254-79	JD8226	Cup - Bearing	20	
<i>Detail Description: Use R254-79M installation mandrel to properly install race.:</i>					
23	R254-78	JD8188	Tapered Bearing Cone	20	
24	R237-54	U46731, U6731	O-Ring - Small	20	
25	RET15755	ET15755	Seal - Oil	40	
26	RET15726	ET15726, RET15726	Sleeve - Wear Hardened	20	
27	R3296-15	N101345	Locknut - 3/4-16 Nylon Jam	20	
28	R40M1863	40M1863	Ring - Snap	10	
29	RTC32114	TCU32114	Spacer - Spindle	5	

All original equipment manufacturers names and part numbers are used for identification purposes only, and we are in no way implying that our products are original equipment parts. Prices subject to change without notice.



Replaces John Deere 9009A Rotary

Mower Parts

Rotary Cutting Unit

Rotary Cutting Unit



Item No	R&R Part No.	OEM Part No.	Description	Qty Req	Order Quantity
30	R170714	E14814	Fitting - Pressure Relief	5	
31	R32120-2	M42702	Ring - Retaining	5	
32	RTC27862	TCU27862	Nut - Spindle	5	
33	RTC32975	TCU32975	Seal	5	
34	RJD8194	JD8194	Tapered Bearing Cone	10	
35	RJD8230	JD8230	Tapered Bearing Cup	10	
36	RTC32974	TCU32974	Seal	5	
37	R471219	471219, 471231, JD7759, JD7798	Zerk - Grease	20	
38	RTCA25913	TCA25913	Spacer - Axle	5	
40	RTC39253	TCU32113, TCU39253	Spindle - Blade	5	
41	RM147138	M147138	Washer - Belville	5	
42	RTC27937	TCU27937	Washer - Anti Friction	5	
43	RH142234	H142234	O - Ring	5	
45	RUC10061	UC10061	Disk Spring	10	
46	RUC10057	SU303558, UC10057	Thrust Washer - Hardened	5	
47	RTC38614	TCU38614	Roller - Front Gauge	10	
48	RTC28104	TCU28104	Bolt - Blade 10.9 Hardness	5	
49	RTC40213	TCU40213	Arm - Rotary Deck Roller	10	
50	RTC40214	TCU40214	Arm - Rotary Deck Roller	10	

All original equipment manufacturers names and part numbers are used for identification purposes only, and we are in no way implying that our products are original equipment parts. Prices subject to change without notice.



Replaces John Deere 9009A Rotary Mower Parts

Rotary Cutting Unit
Rotary Cutting Unit



Item No	R&R Part No.	OEM Part No.	Description	Qty Req	Order Quantity
51	RTCU27014	TCU27014	Bushing	20	
52	R03M7187	03M7187	Bolt - M8 x 35	40	

All original equipment manufacturers names and part numbers are used for identification purposes only, and we are in no way implying that our products are original equipment parts. Prices subject to change without notice.