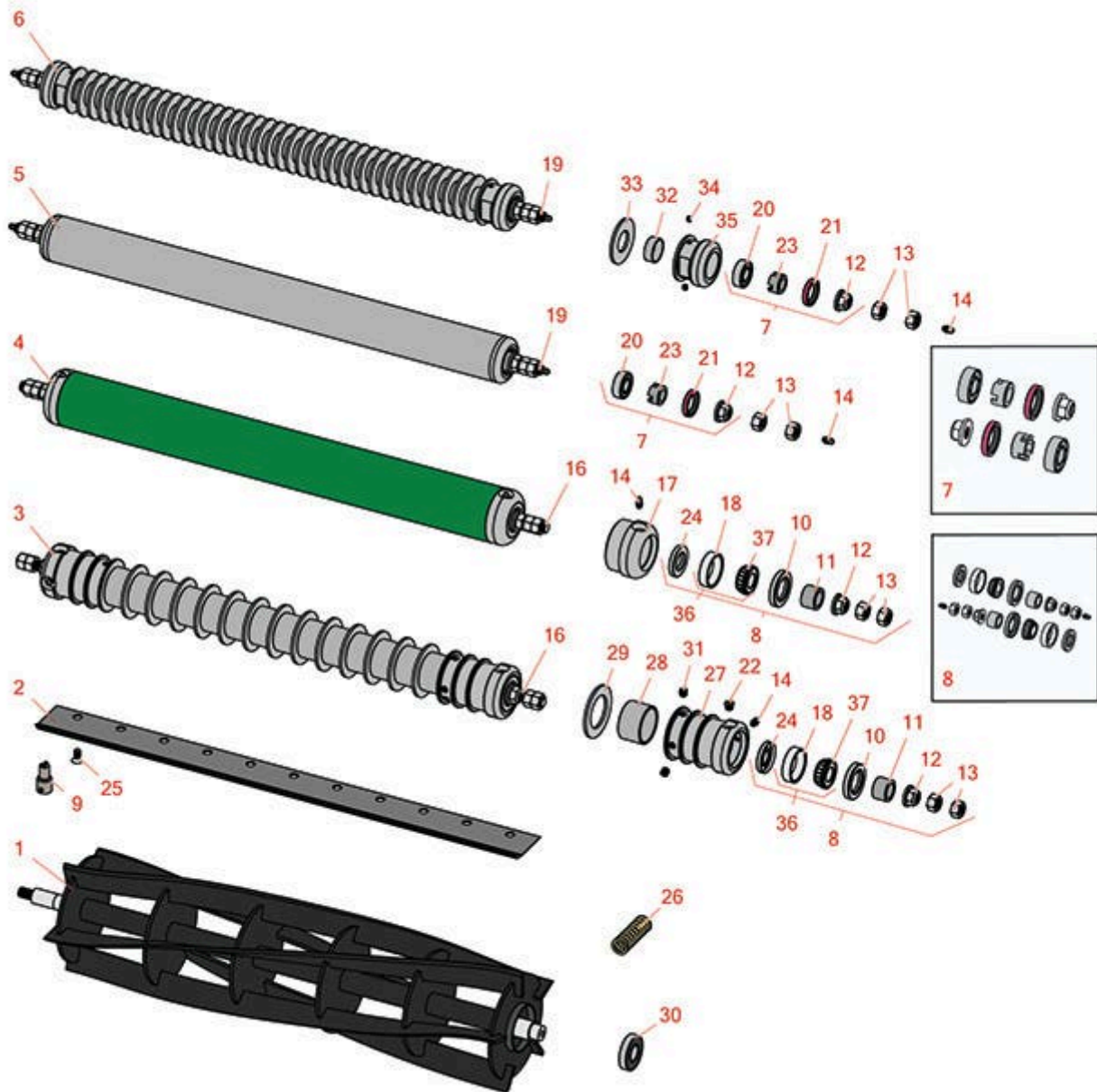




# Replaces Ransomes 180 Parts

Cutting Unit  
Reel & Bedknife



All original equipment manufacturers names and part numbers are used for identification purposes only, and we are in no way implying that our products are original equipment parts. Prices subject to change without notice.



# Replaces Ransomes 180 Parts

Cutting Unit  
Reel & Bedknife



Item R&R  
No Part No.

OEM  
Part No.

Description

Qty  
Req

Order  
Quantity

## R&R Reels, Lifetime Guaranteed

Item No	R&R Part No.	OEM Part No.	Description	Qty Req	Order Quantity
1	<b>RMBB9690</b>	MBB9690	Reel - 5 Blade LH	1	
<p><i>Detail Description:</i> R&amp;R Reel blades are expertly crafted from premium high carbon-boron alloy steel, heat-treated to perfectly complement both R&amp;R and OEM bedknives. Each reel undergoes precision cylindrical grinding on bearing surfaces, followed by relief grinding for optimal performance. Advanced computer balancing ensures extended reel and bearing life. Backed by our lifetime guarantee against defects in materials and craftsmanship under normal use, R&amp;R Reels deliver unmatched durability and cutting precision you can trust.:</p>					
1	<b>RMBB9691</b>	MBB9691	Reel - 5 Blade RH	2	
<p><i>Detail Description:</i> R&amp;R Reel blades are expertly crafted from premium high carbon-boron alloy steel, heat-treated to perfectly complement both R&amp;R and OEM bedknives. Each reel undergoes precision cylindrical grinding on bearing surfaces, followed by relief grinding for optimal performance. Advanced computer balancing ensures extended reel and bearing life. Backed by our lifetime guarantee against defects in materials and craftsmanship under normal use, R&amp;R Reels deliver unmatched durability and cutting precision you can trust.:</p>					
1	<b>RMBC1502</b>	MBC1502	Reel - 7 Blade LH	1	
<p><i>Detail Description:</i> R&amp;R Reel blades are expertly crafted from premium high carbon-boron alloy steel, heat-treated to perfectly complement both R&amp;R and OEM bedknives. Each reel undergoes precision cylindrical grinding on bearing surfaces, followed by relief grinding for optimal performance. Advanced computer balancing ensures extended reel and bearing life. Backed by our lifetime guarantee against defects in materials and craftsmanship under normal use, R&amp;R Reels deliver unmatched durability and cutting precision you can trust.:</p>					
1	<b>RMBC1503</b>	MBC1503	Reel - 7 Blade RH	2	
<p><i>Detail Description:</i> R&amp;R Reel blades are expertly crafted from premium high carbon-boron alloy steel, heat-treated to perfectly complement both R&amp;R and OEM bedknives. Each reel undergoes precision cylindrical grinding on bearing surfaces, followed by relief grinding for optimal performance. Advanced computer balancing ensures extended reel and bearing life. Backed by our lifetime guarantee against defects in materials and craftsmanship under normal use, R&amp;R Reels deliver unmatched durability and cutting precision you can trust.:</p>					
1	<b>R170600</b>		Reel - 11 Blade LH	1	
<p><i>Detail Description:</i> R&amp;R Reel blades are expertly crafted from premium high carbon-boron alloy steel, heat-treated to perfectly complement both R&amp;R and OEM bedknives. Each reel undergoes precision cylindrical grinding on bearing surfaces, followed by relief grinding for optimal performance. Advanced computer balancing ensures extended reel and bearing life. Backed by our lifetime guarantee against defects in materials and craftsmanship under normal use, R&amp;R Reels deliver unmatched durability and cutting precision you can trust.:</p>					

All original equipment manufacturers names and part numbers are used for identification purposes only, and we are in no way implying that our products are original equipment parts. Prices subject to change without notice.



# Replaces Ransomes 180 Parts

Cutting Unit  
Reel & Bedknife



Item No	R&R Part No.	OEM Part No.	Description	Qty Req	Order Quantity
---------	--------------	--------------	-------------	---------	----------------

1	<b>R170605</b>		Reel - 11 Blade RH	2	
<p><i>Detail Description: R&amp;R Reel blades are expertly crafted from premium high carbon-boron alloy steel, heat-treated to perfectly complement both R&amp;R and OEM bedknives. Each reel undergoes precision cylindrical grinding on bearing surfaces, followed by relief grinding for optimal performance. Advanced computer balancing ensures extended reel and bearing life. Backed by our lifetime guarantee against defects in materials and craftsmanship under normal use, R&amp;R Reels deliver unmatched durability and cutting precision you can trust.:</i></p>					

2	<b>RMBA7076</b>	MBA7074, MBA7076	Bedknife - Thick 7/16	1	
<p><i>Detail Description: R&amp;R Bedknives are manufactured from high carbon-boron alloy steel and then hardened to RC46-49 to match the temper of our reel blades and original equipment reels. Bedknives are surface ground on the top and front edge and straightened three times before being packaged with oil for rust prevention. All R&amp;R Bedknives now have an increased front edge grind for added life. All R&amp;R Bedknives are guaranteed against defects in material and workmanship under normal use for the life of the part.:</i></p>					

2	<b>RMBA7088</b>	MBA7088	Bedknife - Low Cut 7/16	1	
<p><i>Detail Description: R&amp;R Bedknives are manufactured from high carbon-boron alloy steel and then hardened to RC46-49 to match the temper of our reel blades and original equipment reels. Bedknives are surface ground on the top and front edge and straightened three times before being packaged with oil for rust prevention. All R&amp;R Bedknives now have an increased front edge grind for added life. All R&amp;R Bedknives are guaranteed against defects in material and workmanship under normal use for the life of the part.:</i></p>					

## R&R Rollers

3	<b>R170710R</b>		Roller - Grooved Repairable Steel	1	
<p><i>Detail Description: Constructed with a through shaft and greasable tapered bearings for extended life, this roller can be repaired by unscrewing the ends and replacing the series of washers and spacers.:</i></p>					

4	<b>R170715</b>		Roller - Smooth Tubular Steel	1	
<p><i>Detail Description: Constructed with a through shaft, this heavy-duty roller uses greasable tapered bearings for extended life.:</i></p>					

5	<b>RA900910</b>	A900910	Roller - Smooth Tubular Steel	1	
<p><i>Detail Description: Constructed with a through shaft, this steel roller uses a through shaft and ball bearings.:</i></p>					

All original equipment manufacturers names and part numbers are used for identification purposes only, and we are in no way implying that our products are original equipment parts. Prices subject to change without notice.



# Replaces Ransomes 180 Parts

Cutting Unit  
Reel & Bedknife



Item No	R&R Part No.	OEM Part No.	Description	Qty Req	Order Quantity
---------	--------------	--------------	-------------	---------	----------------

6	R170700R		Roller - Grooved Repairable Steel	1	
<i>Detail Description: Constructed with a through shaft and greasable ball bearings, this roller can be repaired by unscrewing the ends and replacing the series of washers and spacers.:</i>					

## Overhaul Kits

7	R170703		Overhaul Kit - Roller	1	
<i>Detail Description: Includes 2 ea: R170707 Spacer, R170708 Seal, R170716 Locknut, R303558 Bearing:</i>					

8	R100200		Overhaul Kit - Roller	0	
<i>Detail Description: Includes 4 ea: R443818 Nuts; 2 ea: R150674 Sleeves, R170716 Locknuts, R253-117 Seals, R253-122 Seals, R254-78 Bearings, R254-79 Bearing Cups, R302-5 Grease Fittings:</i>					

## Service Tools

9	R51-0880		Bedknife Screw Driver Tool	0	
<i>Detail Description: Easily install and remove bed knife screws with the help of a ratchet with 3/8" drive. Tool manufactured with hardened alloy steel.:</i>					

## Other Parts Available

10	R253-117		Seal - Outer Triple Lip	2	
11	R150674		Sleeve - Wear 3/4 Plated	2	
12	R170716		Locknut - 1/2-13 Flanged	2	
13	R443818		Nut - 1/2-13 Hex Jam Zinc	4	
14	R302-5		Fitting - Grease	2	
16	R170713		Shaft - Heavy Duty RR Roller	1	
17	R5-4035		Roller End - 2-7/8 OD	2	
18	R254-79		Cup - Bearing	2	

*Detail Description: Use R254-79M installation mandrel to properly install race.:*

All original equipment manufacturers names and part numbers are used for identification purposes only, and we are in no way implying that our products are original equipment parts. Prices subject to change without notice.



## Replaces Ransomes 180 Parts

Cutting Unit  
Reel & Bedknife



Item No	R&R Part No.	OEM Part No.	Description	Qty Req	Order Quantity
19	R170702		Shaft - 2-3/8 Grooved Roller	1	
20	R303558		Bearing - Roller	2	
21	R170708		Seal - 2-3/8 Roller	2	
22	R170714		Fitting - Pressure Relief	2	
23	R170707		Spacer - 2 3/8 Roller	2	
24	R253-122		Seal	2	
25	R150476	LS02521B	Screw - Bedknife 5/16-18 x 5/8	11	
26	RA291006	A291006	Spring - Bk Adj	2	
27	R150670		Roller End - 2-3/4 Threaded	2	
28	R150676		Spacer - 2-3/4 Dia x 1-1/4 L	14	
29	R150672		Washer - 2-3/4 Roller	13	
30	RA203604	A203604	Bearing	2	
31	R150691		Screw - Set Nyloc 3/8-16 x 3/8	4	
32	R150651		Spacer - 2-3/8 Roller	39	
33	R150653		Washer - 2-3/8 Roller	38	
34	R150690		Screw - Set 1/4-20 x 1/4	4	
35	R150665		Roller End - 2-3/8 Repairable	2	
36	R500534	2208006	Bearing - with Cup	2	
<i>Detail Description: Kit includes: 1 ea R254-78- Bearing Cone &amp; R254-79 Bearing Cone:</i>					
37	R254-78		Tapered Bearing Cone	2	

All original equipment manufacturers names and part numbers are used for identification purposes only, and we are in no way implying that our products are original equipment parts. Prices subject to change without notice.