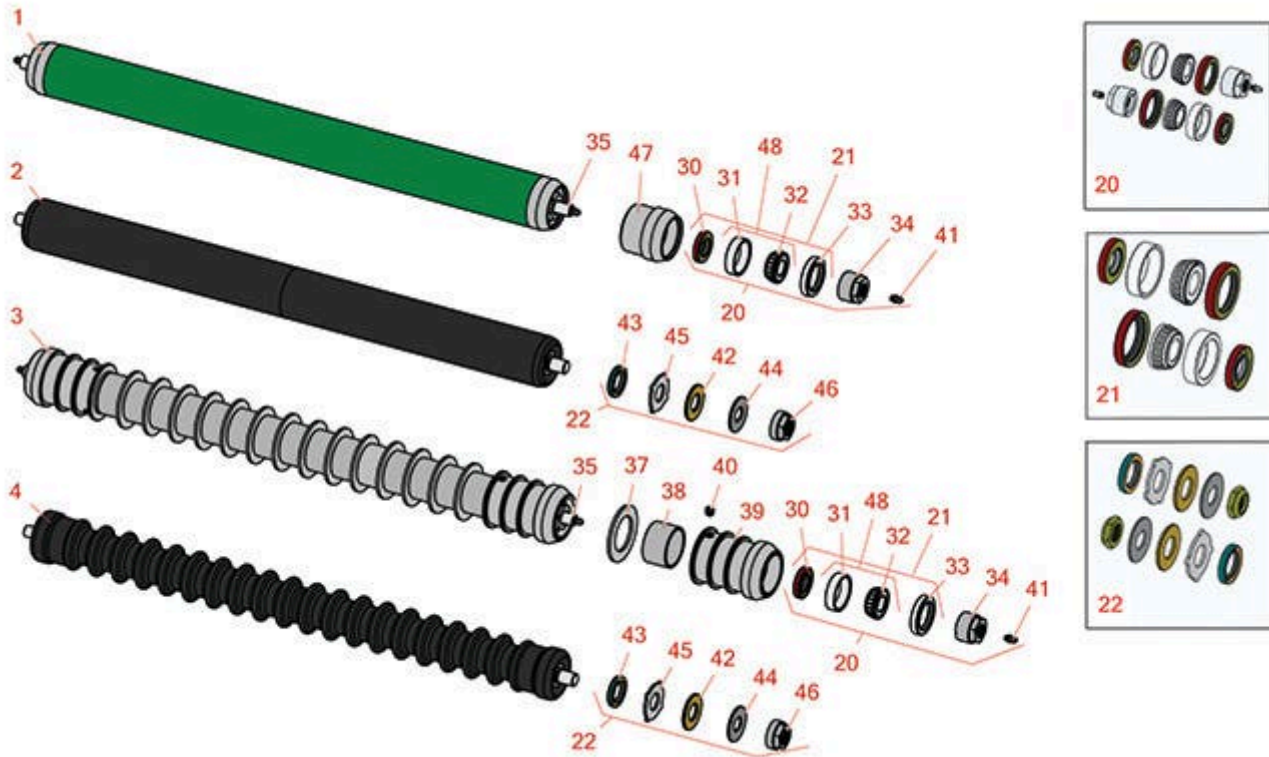




# Replaces R&R Products Reel Max 331D

## Parts

Cutting Unit  
Rollers



All original equipment manufacturers names and part numbers are used for identification purposes only, and we are in no way implying that our products are original equipment parts. Prices subject to change without notice.



# Replaces R&R Products Reel Max 331D

## Parts

Cutting Unit  
Rollers



Item No	R&R Part No.	OEM Part No.	Description	Qty Req	Order Quantity
---------	--------------	--------------	-------------	---------	----------------

### R&R Rollers to fit 27" Units

1	R61-0410G		Roller - Smooth Tubular Steel - Green	1	
---	-----------	--	---------------------------------------	---	--

*Detail Description: Constructed with a through shaft, this heavy duty roller uses greasable tapered bearings for extended life.:*

2	R1503770	R150377	Roller - Smooth UHMW Polyethylene	0	
---	----------	---------	-----------------------------------	---	--

*Detail Description: Machined from solid UHMW, this low maintenance roller uses a 1" solid stainless steel shaft and requires no grease. UHMW material prevents build-up of debris.:*

3	R63-5160	R62-7410, R82-2400, R92-1846	Roller - Grooved Repairable Steel	0	
---	----------	------------------------------------	-----------------------------------	---	--

*Detail Description: Constructed with a through shaft and greasable tapered bearings for extended life. This roller can be repaired by unscrewing the ends and replacing the series of washers and spacers.:*

4	R1503780	R150378	Roller - Grooved UHMW Polyethylene	0	
---	----------	---------	------------------------------------	---	--

*Detail Description: Machined from solid UHMW, this low maintenance roller rotates around a 1" solid stainless steel shaft and requires no bearings or grease. Patented groove design and smooth UHMW material prevents build-up of debris.:*

21	R106-9607	R100145	Overhaul Kit - Roller	0	
----	-----------	---------	-----------------------	---	--

*Detail Description: Includes 2 ea: R253-146 Seals, R253-152 Seals, R254-78 Bearings, R254-79 Bearing Cups, R302-5 Zerks & R71-3590 Nuts:*

22	R101399		Overhaul Kit - UHMW 2 Pc Roller	1	
----	---------	--	---------------------------------	---	--

*Detail Description: Fits all R&R 2-1/2" - 3-1/2" Dia. Black UHMW Plastic Rollers that do not use ball bearings.. Includes 2 ea.: R1503230 Star Washers, R1503470 Seals, R150333 Thrust Washers, R3296-15 Locknuts, R1503471 Bronze Thrust Washers:*

### Other Parts Available

30	R253-152	R253-116, R3001656	Seal - Inner Roller	2	
----	----------	-----------------------	---------------------	---	--

All original equipment manufacturers names and part numbers are used for identification purposes only, and we are in no way implying that our products are original equipment parts. Prices subject to change without notice.



# Replaces R&R Products Reel Max 331D

## Parts

Cutting Unit  
Rollers



Item No	R&R Part No.	OEM Part No.	Description	Qty Req	Order Quantity
31	R254-79	R01-103-0060, R01-103-0130, R1-633584, R252-106, R255820, R32-7800, R32-9590, R4121175, R70030-50301, R808088, RB4015, RG-372, RJD8226	Cup - Bearing	2	
<i>Detail Description: Use R254-79M installation mandrel to properly install race.:</i>					
32	R254-78	R01-102-0060, R01-102-0130, R1-633585, R255815, R32-7790, R32-9580, R385174, R4121174, R4135152, R70030-50302, R93-4813, RB4512, RG-373, RJD8188	Tapered Bearing Cone	2	
33	R253-146	R105-0150, R253-143, R253-153	Seal	2	
34	R71-3590	R61-0370	Nut - Adjusting Roller	2	
35	R61-0400	R105-0156	Shaft - Roller	1	
37	R150672		Washer - 2-3/4 Roller	0	
38	R150671		Spacer - 2 3/4 / 3 Rollers 13/16 L	0	
38	R150676		Spacer - 2-3/4 Dia x 1-1/4 L	0	
39	R150689		Roller End - Threaded	2	

All original equipment manufacturers names and part numbers are used for identification purposes only, and we are in no way implying that our products are original equipment parts. Prices subject to change without notice.



# Replaces R&R Products Reel Max 331D

## Parts

Cutting Unit  
Rollers



Item No	R&R Part No.	OEM Part No.	Description	Qty Req	Order Quantity
40	R150691	R182-0, R70030-50483, RF5205	Screw - Set Nyloc 3/8-16 x 3/8	4	
41	R302-5	R173-0, R21-6010, R255825, R302-37, R302-47, R302-57, R302-58, R302-6, R31-0300, R32-9660, R471214, R471223, R471226, R60-0800, R62-3880, R92-4181, RJD7797, RJD7842, RJD7844, RM0004, RZS48114-04	Fitting - Grease	0	
42	R1503471		Washer - Thrust SAE660 Bronze	2	
43	R1503470		Seal - Inner Wiper	2	
44	R150333	R150447	Washer - Flat Keyed Outer SS	2	
45	R1503230		Washer - Thrust Outer Keyed	2	
46	R150368		Nut - Adjusting	2	
47	R61-0380		Roller End - Cap Solid	2	
48	R500534	R2208006, RPT230030, RZS482621	Bearing - with Cup	2	

*Detail Description: Kit includes: 1 ea R254-78- Bearing Cone & R254-79 Bearing Cone:*

All original equipment manufacturers names and part numbers are used for identification purposes only, and we are in no way implying that our products are original equipment parts. Prices subject to change without notice.