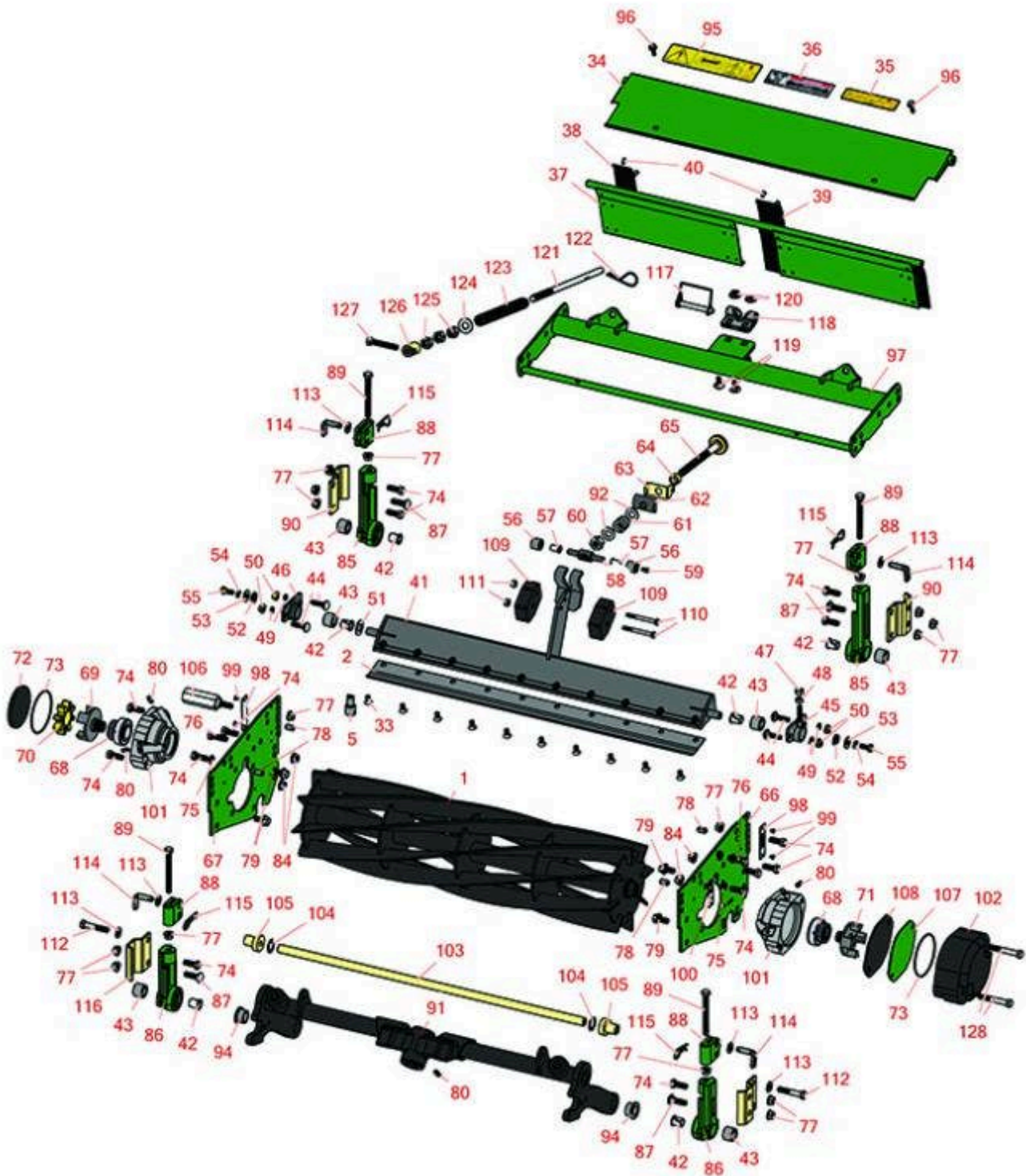




# Replaces R&R Products Reel Max 331D

## Parts

Cutting Unit  
Reel & Bedknife



All original equipment manufacturers names and part numbers are used for identification purposes only, and we are in no way implying that our products are original equipment parts. Prices subject to change without notice.



# Replaces R&R Products Reel Max 331D

## Parts

Cutting Unit  
Reel & Bedknife



Item No	R&R Part No.	OEM Part No.	Description	Qty Req	Order Quantity
---------	--------------	--------------	-------------	---------	----------------

### R&R Reels, Lifetime Guaranteed

1	<b>R94-3631</b>	R93-8839, R99-3468, R99-3482	Reel - 5 Blade Fits 27x7	1	
---	-----------------	------------------------------------	--------------------------	---	--

*Detail Description: R&R Reel blades are expertly crafted from premium high carbon-boron alloy steel, heat-treated to perfectly complement both R&R and OEM bedknives. Each reel undergoes precision cylindrical grinding on bearing surfaces, followed by relief grinding for optimal performance. Advanced computer balancing ensures extended reel and bearing life. Backed by our lifetime guarantee against defects in materials and craftsmanship under normal use, R&R Reels deliver unmatched durability and cutting precision you can trust.:*

1	<b>R94-3630</b>	R93-8833, R99-3469, R99-3483	Reel - 8 Blade Fits 27x7	1	
---	-----------------	------------------------------------	--------------------------	---	--

*Detail Description: R&R Reel blades are expertly crafted from premium high carbon-boron alloy steel, heat-treated to perfectly complement both R&R and OEM bedknives. Each reel undergoes precision cylindrical grinding on bearing surfaces, followed by relief grinding for optimal performance. Advanced computer balancing ensures extended reel and bearing life. Backed by our lifetime guarantee against defects in materials and craftsmanship under normal use, R&R Reels deliver unmatched durability and cutting precision you can trust.:*

1	<b>R105-6768</b>		Reel - 11 Blade 27x7	1	
---	------------------	--	----------------------	---	--

*Detail Description: R&R Reel blades are manufactured from high carbon-boron alloy steel and then hardened to RC46-49 to match the temper of our bedknives and original equipment bedknives. All R&R Reels are cylindrically ground on bearing surfaces and then relief ground. Reels are then precision computer balanced for extended bearing and reel life. R&R Products Reels are guaranteed against defects in material and workmanship for the life of the reel under normal use.:*

### R&R Bedknives, Lifetime Guaranteed

2	<b>R62-5180</b>	R105-6785, R61-0800	Bedknife - Lowcut - 27 in Unit	1	
---	-----------------	------------------------	--------------------------------	---	--

*Detail Description: R&R Bedknives are manufactured from high carbon-boron alloy steel and then hardened to RC46-49 to match the temper of our reel blades and original equipment reels. Bedknives are surface ground on the top and front edge and straightened three times before being packaged with oil for rust prevention. All R&R Bedknives now have an increased front edge grind for added life. All R&R Bedknives are guaranteed against defects in material and workmanship under normal use for the life of the part.:*

2	<b>R104-1380</b>		Bedknife - Highcut - 27 in Unit	1	
---	------------------	--	---------------------------------	---	--

All original equipment manufacturers names and part numbers are used for identification purposes only, and we are in no way implying that our products are original equipment parts. Prices subject to change without notice.



# Replaces R&R Products Reel Max 331D

## Parts

Cutting Unit  
Reel & Bedknife



Item No	R&R Part No.	OEM Part No.	Description	Qty Req	Order Quantity
---------	--------------	--------------	-------------	---------	----------------

*Detail Description: R&R Bedknives are manufactured from high carbon-boron alloy steel and then hardened to RC46-49 to match the temper of our reel blades and original equipment reels. Bedknives are surface ground on the top and front edge and straightened three times before being packaged with oil for rust prevention. All R&R Bedknives now have an increased front edge grind for added life. All R&R Bedknives are guaranteed against defects in material and workmanship under normal use for the life of the part.:*

### R&R Razor Tool Steel Bedknives, Lifetime Guaranteed

2	<b>R112-8910</b>		Bedknife - Razor Tool Steel - 27 High Cut	1	
---	------------------	--	---	---	--

*Detail Description: R&R Razor bedknives are manufactured from premium alloy tool steel steel and then hardened to RC48-51 to match the temper of our Razor reel blades and original equipment premium series reels. Bedknives are surface ground on the top and front edge and specially packaged for rust prevention. All R&R Bedknives now have an increased front edge grind for added life. All R&R Bedknives are guaranteed against defects in material and workmanship under normal use for the life of the part. You can expect up to double the life over standard bedknives.:*

### Service Tools

5	<b>R51-0880</b>		Bedknife Screw Driver Tool	0	
---	-----------------	--	----------------------------	---	--

*Detail Description: Easily install and remove bed knife screws with the help of a ratchet with 3/8" drive. Tool manufactured with hardened alloy steel.:*

### Other Parts Available

33	<b>R150476</b>	R170476, R3-3816, R52-4910, R57-4910	Screw - Bedknife 5/16-18 x 5/8	10	
----	----------------	---	--------------------------------	----	--

33	<b>R150475</b>	R3-6462, R3-6642	Screw - Bedknife Stainless 5/16-18 x 5/8	10	
----	----------------	---------------------	--	----	--

*Detail Description: Pre-Packaged in bags of 50:*

34	<b>R94-3621G</b>		Shield - Top - 27 in - Green	1	
----	------------------	--	------------------------------	---	--

35	<b>R93-6688</b>		Decal - Warning	1	
----	-----------------	--	-----------------	---	--

36	<b>R67-7960</b>	R27-2890, R62-5070	Decal - Warning	1	
----	-----------------	-----------------------	-----------------	---	--

All original equipment manufacturers names and part numbers are used for identification purposes only, and we are in no way implying that our products are original equipment parts. Prices subject to change without notice.



# Replaces R&R Products Reel Max 331D

## Parts

Cutting Unit  
Reel & Bedknife



Item No	R&R Part No.	OEM Part No.	Description	Qty Req	Order Quantity
37	R93-8849G		Shield - Rear Grass Fits 27 in Units - Green	1	
38	R61-3280		Cover - Rubber Side	2	
39	R61-3290		Cover - Rubber Center	2	
40	R700382		Rivet - Guard	12	
41	R95-8739	R95-8739-01, R95-8739B	Bed Bar - Fits 27 Units	1	
42	R56-9520		Bushing - Nyliner	2	
43	R56-9510		Bushing - Rubber For Bed Bar / RI	2	
44	R3230-2	3230-2, R01-173-0508, R25-25-AGD, R513624, R513633, R513635, R900038P	Bolt - Carriage	4	
45	R16-9769		Housing - Bed Bar - Adj. Side	1	
46	R14-4459		Housing - w/Bushing For Bed Bar	1	
47	R444754	R000210	Locknut - 5/16-24 Center	1	
48	R3219-2	R01-188-0524, R22-12-BJKD, R915720	Nut - 5/16-24 Zinc	1	
49	R3256-74		Washer - Flat	4	
50	R104-8300	R119-4041	Locknut - 5/16-18 Flanged Y/Zinc	4	
51	R61-1950		Washer - Nylon - Bed Bar	1	
52	R62-7120		Washer	1	
53	R3256-56	R60-4750	Washer	2	

All original equipment manufacturers names and part numbers are used for identification purposes only, and we are in no way implying that our products are original equipment parts. Prices subject to change without notice.



# Replaces R&R Products Reel Max 331D

## Parts

Cutting Unit  
Reel & Bedknife



Item No	R&R Part No.	OEM Part No.	Description	Qty Req	Order Quantity
54	R3253-4	R01-166-0110, R01-166-0510, R09053, R23-10-GD, R24-7170, R30-8520, R42-9850, R48-9350, R48-9360, R48-9570, R68-9420, R99-7577	Washer - Lock 5/16 Zinc	2	
55	R322-3	R01-150-1420, R01-178-0506, R09109, R20-24-AD, R20-24-AGD, R48-9270, R513339, R908017P, RB311201	Bolt - Hex HD 5/16-18 x 3/4	2	
56	R62-5510	R52-2870, R52-2880	Bushing	2	
57	R52-2890		Bushing - Flanged	2	
58	R57-5260	R107-7409	Pivot - 1/2-20 - Bed Bar	1	
59	R302-18		Zerk - Grease Press Style	1	
60	R3296-62		Locknut - 1/2-20 LH Jam	1	
61	R57-5270		Spring - Adjusting Handle	1	
62	R93-2892		Pivot - Plastic - Bed Bar	1	
63	R95-8752	R93-9767	Arm - Spring	1	
64	R93-2959		Spacer - Bed Bar Assy	1	

All original equipment manufacturers names and part numbers are used for identification purposes only, and we are in no way implying that our products are original equipment parts. Prices subject to change without notice.



# Replaces R&R Products Reel Max 331D

## Parts

Cutting Unit  
Reel & Bedknife



Item No	R&R Part No.	OEM Part No.	Description	Qty Req	Order Quantity
65	R95-8877	R106-7356, R106-7536, R93-2957, R95-2762	Handle - Bed Bar Adjustment	1	
66	R151116		Endplate - LH Extended - Green	1	
67	R151115		Endplate - RH Extended - Green	1	
68	R100-4926		Bearing - Reel Self Aligning	2	
69	R93-8825		Coupling - RH Reel	1	
70	R93-8827		Spider - Reel Coupling	1	
71	R93-8826		Coupling - LH Reel	1	
72	R94-2703		Plug - Plastic Spindle Housing	1	
73	R353-949	R60-3520	O-Ring	2	
74	R323-6	323-6, R01-150-0010, R01-178-0608, R20-47-AD, R20-47-AGD, R3224-2, R49-3510, R908034P, R908332	Bolt - Hex HD 3/8-16 x 1 GR5 YZ	10	
75	R3254-6	446142, R01-166-0010, R01-166-0280, R01-166-0610, R12H304, R3253-5, R3254-18, R3290-223, R446140, R446142, R48-9370	Washer - Lock 3/8	4	

All original equipment manufacturers names and part numbers are used for identification purposes only, and we are in no way implying that our products are original equipment parts. Prices subject to change without notice.



# Replaces R&R Products Reel Max 331D

## Parts

Cutting Unit  
Reel & Bedknife



Item No	R&R Part No.	OEM Part No.	Description	Qty Req	Order Quantity
76	R400264	323-7, R01-150-0180, R01-178-0610, R19H1732, R20-48-AD, R20-48-AGD, R32-9160, R3224-3, R323-29, R323-7, R400264, R908035P	Bolt - Hex HD 3/8-16 x 1-1/4	2	
77	R3296-39	3296-39, R32127-25, R32128-36, R3296-17, R3296-22, R915663P, R99-7443	Locknut - 3/8-16 Nylon	6	
78	R32121-36		Pin-Spring	4	
79	R110-1718		Screw-HHF	4	
80	R302-5	R173-0, R21-6010, R255825, R302-37, R302-47, R302-57, R302-58, R302-6, R31-0300, R32-9660, R471214, R471223, R471226, R60-0800, R62-3880, R92-4181, RJD7797, RJD7842, RJD7844, RM0004, RZS48114-04	Fitting - Grease	4	

All original equipment manufacturers names and part numbers are used for identification purposes only, and we are in no way implying that our products are original equipment parts. Prices subject to change without notice.



# Replaces R&R Products Reel Max 331D

## Parts

Cutting Unit  
Reel & Bedknife



Item No	R&R Part No.	OEM Part No.	Description	Qty Req	Order Quantity
84	R32128-19		Locknut - 3/8-16 Flanged Top Lock	8	
85	R14-4479G		Bracket - Assy - Rear Roller - Green	2	
86	R14-4489G		Bracket - Assy - Front Roller - Green	2	
87	R3231-25	R01-173-0610, R30-9970, R3231-3, R900064P	Bolt - Carriage 3/8-16 x 1-1/4	4	
88	R61-0420G		Support - HOC - Green	4	
89	R61-0790	R323-57	Bolt - Roller Adjustment	4	
90	R61-0910		Bracket	4	
91	R151135		Carrier Frame Assy	1	
92	R29-8910-01	R29-8910	Washer - Flat 1/2	2	
94	R93-2877		Bushing - Flanged	2	
95	R93-8064		Decal - Warning	1	
96	R32144-10	R32140-81, R32144-3, R34-140-AMVD	Bolt - 1/4-20 x 3/4 Serrated Hx Wshr	2	
97	R151110		Frame - Green - Fits R151100	1	
98	R61-3800		Plate - HOC Rear	2	
99	R3290-55		Rivet - 5/32 x 3/8 Pop Rivet	8	
100	R61-3790		Plate-HOC, Front	2	
101	R99-3404	R93-6930	Housing-Bearing	2	
102	R105-0171-03		Weight-End	1	

All original equipment manufacturers names and part numbers are used for identification purposes only, and we are in no way implying that our products are original equipment parts. Prices subject to change without notice.





# Replaces R&R Products Reel Max 331D

## Parts

Cutting Unit  
Reel & Bedknife



Item No	R&R Part No.	OEM Part No.	Description	Qty Req	Order Quantity
103	R151120		Cross Bar	1	
104	R67-9410		Washer - Clevis Pin	2	
105	R151125		Bushing - Cross Bar	2	
106	R151131		Stud - Anti Pivot	1	
107	R93-6960		Cover - Bearing Holder	1	
108	R94-5979		Gasket	1	
109	R99-3472		Weight	2	
110	R321-23		Bolt - Hx HD 1/4-20 x 3	0	
110	R400124	R01-178-0420, R20-11-AD, R321-15	Bolt - Hex HD 1/4-20 x 2-1/2 GR5	2	
111	R301504	R32127-24, R32146-17, R3296-16, R3296-42, R915661P, RM40333	Locknut - ESNA 1/4-20	2	
112	R323-10	R01-150-0680, R01-178-0616, R100-6663, R100-8320, R1489, R20-51-AD, R20-51-AGD, R3224-6, R323-35, R908336, REP-300-ZB	Bolt - Hex HD 3/8-16 x 2	2	

All original equipment manufacturers names and part numbers are used for identification purposes only, and we are in no way implying that our products are original equipment parts. Prices subject to change without notice.



# Replaces R&R Products Reel Max 331D

## Parts

Cutting Unit  
Reel & Bedknife



Item No	R&R Part No.	OEM Part No.	Description	Qty Req	Order Quantity
113	R453011	3256-24, 453011, R01-166-0100, R01-166-0120, R01-166-0270, R01-166-0500, R01-166-0600, R01-166-0620, R132-4593, R237-12, R24-10-AD, R24-11-AD, R24-11-BD, R24-12-AD, R24-12-BD, R30-9310, R32-8190, R3256-24, R3256-3, R3256-36, R3256-4, R47-9950	Washer - Flat 3/8 SAE Y/Zinc	11	
114	R71-3690	R61-0630	Spade - Bent	4	
115	R3290-467		Pin-Hair	4	
116	R151126		Bracket Extended - Front	2	
117	R107-7400		Pin - Lynch	1	
118	R110-4058		Bracket - Chain	1	
119	R3230-23	R3-5861	Bolt - 5/16-18x3/4 - Carriage	2	
120	R32128-43	R30-8990, R3290-357	Nut - Flanged Whiz - 3/8-16	2	
121	R115-2007	R107-7437	Rod - Spring	1	
122	R92-2762		Pin - Snap	1	
123	R110-4079		Spring	1	
124	R87-7270-01	R87-7270	Washer - Flat 1/2	1	

All original equipment manufacturers names and part numbers are used for identification purposes only, and we are in no way implying that our products are original equipment parts. Prices subject to change without notice.



# Replaces R&R Products Reel Max 331D

## Parts

*Cutting Unit  
Reel & Bedknife*



Item No	R&R Part No.	OEM Part No.	Description	Qty Req	Order Quantity
125	R443818	R01-191-0813, R3218-18, R3218-5	Nut - 1/2-13 Hex Jam Zinc	3	
126	R99-8662		Tube - Spring	1	
127	R104-3396		Bolt - Hex HD 3/8-16 x 2-1/4	1	
128	R101526	321-11, R01-150-0970, R01-178-0620, R20-53-AGD, R3224-8, R323-12, R323-31, R323-47	Bolt - Hex HD 3/8-16 x 2-1/2 GR5	2	

All original equipment manufacturers names and part numbers are used for identification purposes only, and we are in no way implying that our products are original equipment parts. Prices subject to change without notice.