

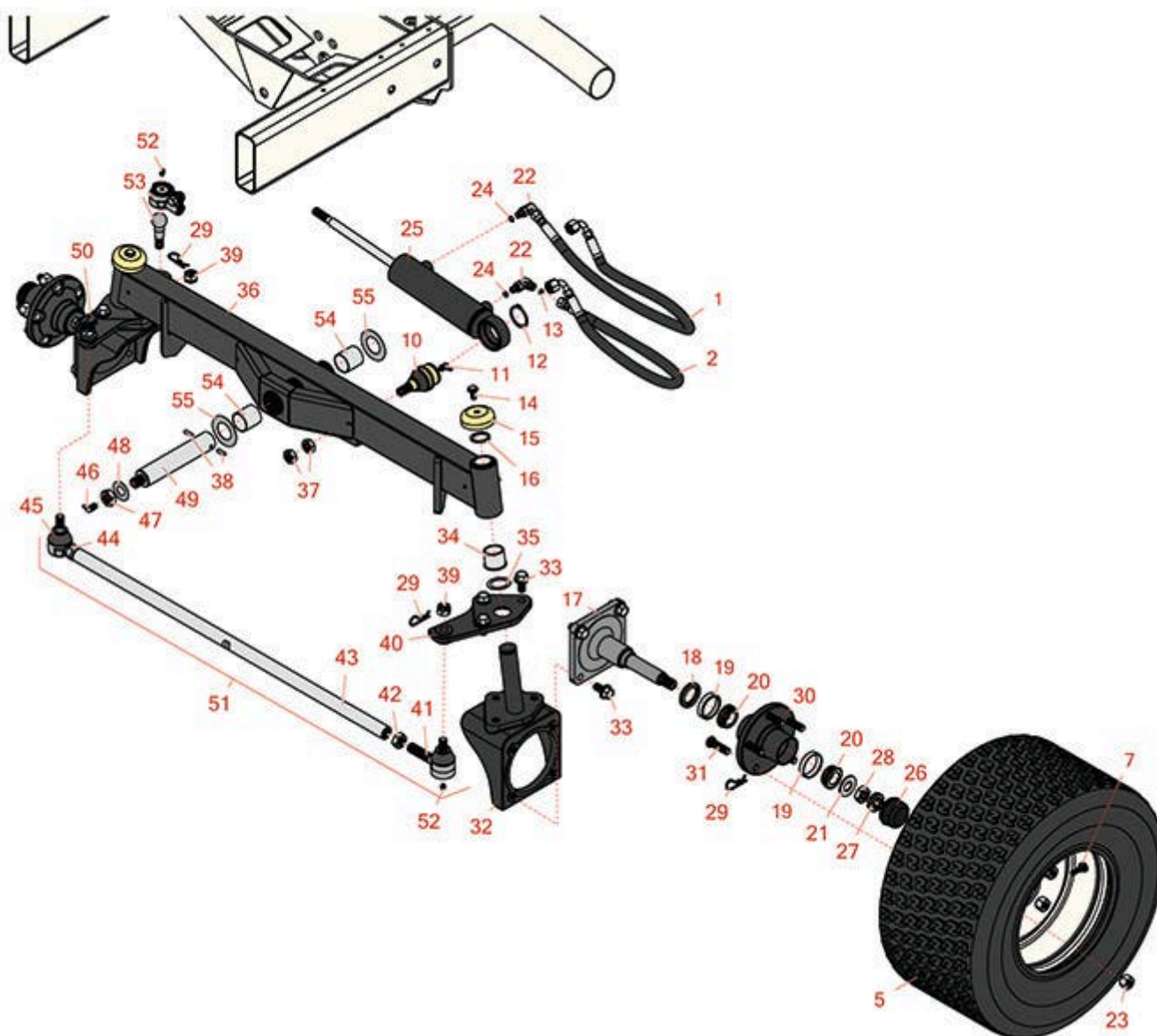


Replaces R&R Products Reel Max 744D

Parts

Traction Unit

Rear Axle



All original equipment manufacturers names and part numbers are used for identification purposes only, and we are in no way implying that our products are original equipment parts. Prices subject to change without notice.



Replaces R&R Products Reel Max 744D

Parts

Traction Unit

Rear Axle



Item No	R&R Part No.	OEM Part No.	Description	Qty Req	Order Quantity
---------	--------------	--------------	-------------	---------	----------------

Hoses

1	R110-0973		Hose Asy	1	
2	R110-0928		Hydraulic Hose Assy	1	

Tires

5	RCT575315	R117-5125	Tire - 20x12.00-10 Nhs (4 Ply) Carlisle Turf Trac R/S	2	
---	-----------	-----------	--	---	--

Detail Description: The Turf Trac R/S tire offers all-around best performance in our residential product line. Applications include grounds care equipment, zero turn mowers and utility vehicles.:

5	RCT511257		Tire - 20x12.00-10 Nhs (4 Ply) Carlisle Turf Master	2	
---	-----------	--	--	---	--

Detail Description: The Carlisle Turf Master tire is a professional-grade tire known for its durability, stability, and traction. With its contoured shoulder protection, deep tread lugs, and durable compound, the Turf Master tire delivers reliable performance for ZTRs and professional-grade mowers. Whether you're maintaining a large lawn or operating a commercial landscaping business, the Turf Master tire is designed to meet your high standards and exceed your expectations.:

7	R232-27	R232-31, R360111	Stem - Valve w/ Cap	2	
---	---------	---------------------	---------------------	---	--

Other Parts Available

10	R106-6774	R92-5838, R92-5838-01	Ball Joint	1	
11	R302-40	R302-13	Fitting - Grease	1	
12	R32151-104		Ring - Retaining, Ex	1	
13	R237-21		O-Ring	2	
14	R3234-1		Bolt - Flanged Serrated Hex HD 3/8-16 x 3/4	2	
15	R69-8890		Cap-Spindle	2	

All original equipment manufacturers names and part numbers are used for identification purposes only, and we are in no way implying that our products are original equipment parts. Prices subject to change without notice.



Replaces R&R Products Reel Max 744D

Parts

Traction Unit
Rear Axle



Item No	R&R Part No.	OEM Part No.	Description	Qty Req	Order Quantity
16	R32151-77		Ring - Retaining	2	
17	R110-5299-03		Spindle	2	
18	R253-129	R41321	Seal - 1 1/4" ID	2	
19	R254-72	R01-103-0050, R01-103-0120, R01-103-0140, R1-543508, R254-71, R313456, R40439, R521744, R62-3340, R814474, R99-4511, RJD8253	Cup - Bearing	4	
20	R254-94	R1-543509, R313089, R32-8090, R32-8240, R32-9640, R40440, R521494, R62-3330, R814473, RJD8933, RTCU37582	Tapered Bearing Cone	4	
21	R93-0309		Washer - Tab	2	
23	R340-132		Hydraulic Fitting - 90 Deg	2	
23	R242-50		Nut - 1/2-20 Wheel	10	
24	R237-22	R107-8844, R232-72, R237-78	O-Ring	2	
25	R107-4458	R110-9035	Hydraulic Cylinder	1	

All original equipment manufacturers names and part numbers are used for identification purposes only, and we are in no way implying that our products are original equipment parts. Prices subject to change without notice.



Replaces R&R Products Reel Max 744D

Parts

Traction Unit
Rear Axle



Item No	R&R Part No.	OEM Part No.	Description	Qty Req	Order Quantity
26	R241-119	R01-269-0070, R01-269-0280, R01-286-0040, R30-9930, R40438	Cap-Dust	2	
27	R93-0307		Nut - Lock Retainer	2	
28	R3220-7	443832, R01-191-1216, R3-5103, R443832, RF7005	Nut - 3/4-16 Jam Zinc	2	
29	R3272-12	3272-12, R01-151-0090, R28-19-D	Pin - Cotter 1/8 x 1-1/4	5	
30	R21-0180		Hub Assy	2	
31	R10-6830		Stud - 1/2-20 x 1 3/4	10	
32	R107-4517-03		Housing - Motor	2	
33	R3234-6	R32144-13, R3434-6	Bolt - Hex HD Flanged	14	
34	R104-0015	R104-8339	Bushing - Flanged	4	
35	R76-2980		Washer - Thrust	2	
36	R107-4546-03		Axle Assy	1	
37	R150926		Nut - Hex Jam M16-1.5	2	
38	R32121-32	R01-153-0180, R34H385	Pin - Roll 1/4 x 1-3/4	2	
39	R105-7941		Nut - Hex - Slotted	3	
40	R110-5297-03		Link - Drag LH	1	
41	R2411-46	R2411-46-03	End - Tie Rod - LH	1	

All original equipment manufacturers names and part numbers are used for identification purposes only, and we are in no way implying that our products are original equipment parts. Prices subject to change without notice.



Replaces R&R Products Reel Max 744D

Parts

*Traction Unit
Rear Axle*



Item No	R&R Part No.	OEM Part No.	Description	Qty Req	Order Quantity
42	R110-5337		Nut - Jam 11/16-18 LH	1	
43	R110-5335		Tie Rod	1	
44	R84-5300		Nut - Jam 11/16-18 RH	1	
45	R71-4740-03	R2411-45, R71-4740	End - Tie Rod - RH	1	
46	R323016	R302-33	1/8"-NPT 90 Degree Grease Fitting	1	
47	R444742	R32146-20, R9150906, R915090P	Nut - 3/4-16 Gripco Centerlock	1	
48	R71-4540		Washer - Thrust	1	
49	R140-6101	R98-8173, R98-8173-03	Pivot Pin - Rear Lift Arm	1	
50	R110-5295-03		Link - Drag - RH	1	
51	R110-5334-03		Tie Rod Assy	1	

All original equipment manufacturers names and part numbers are used for identification purposes only, and we are in no way implying that our products are original equipment parts. Prices subject to change without notice.



Replaces R&R Products Reel Max 744D

Parts

Traction Unit

Rear Axle



Item No	R&R Part No.	OEM Part No.	Description	Qty Req	Order Quantity
52	R302-5	R173-0, R21-6010, R255825, R302-37, R302-47, R302-57, R302-58, R302-6, R31-0300, R32-9660, R471214, R471223, R471226, R60-0800, R62-3880, R92-4181, RJD7797, RJD7842, RJD7844, RM0004, RZS48114-04	Fitting - Grease	5	
53	R106-6895-03	R106-6895, R69-9810, R69-9810-03	Ball Joint Assy	1	
54	R99-6964		Bushing - Axle	2	
55	R99-8432		Washer - Thrust	2	

All original equipment manufacturers names and part numbers are used for identification purposes only, and we are in no way implying that our products are original equipment parts. Prices subject to change without notice.