

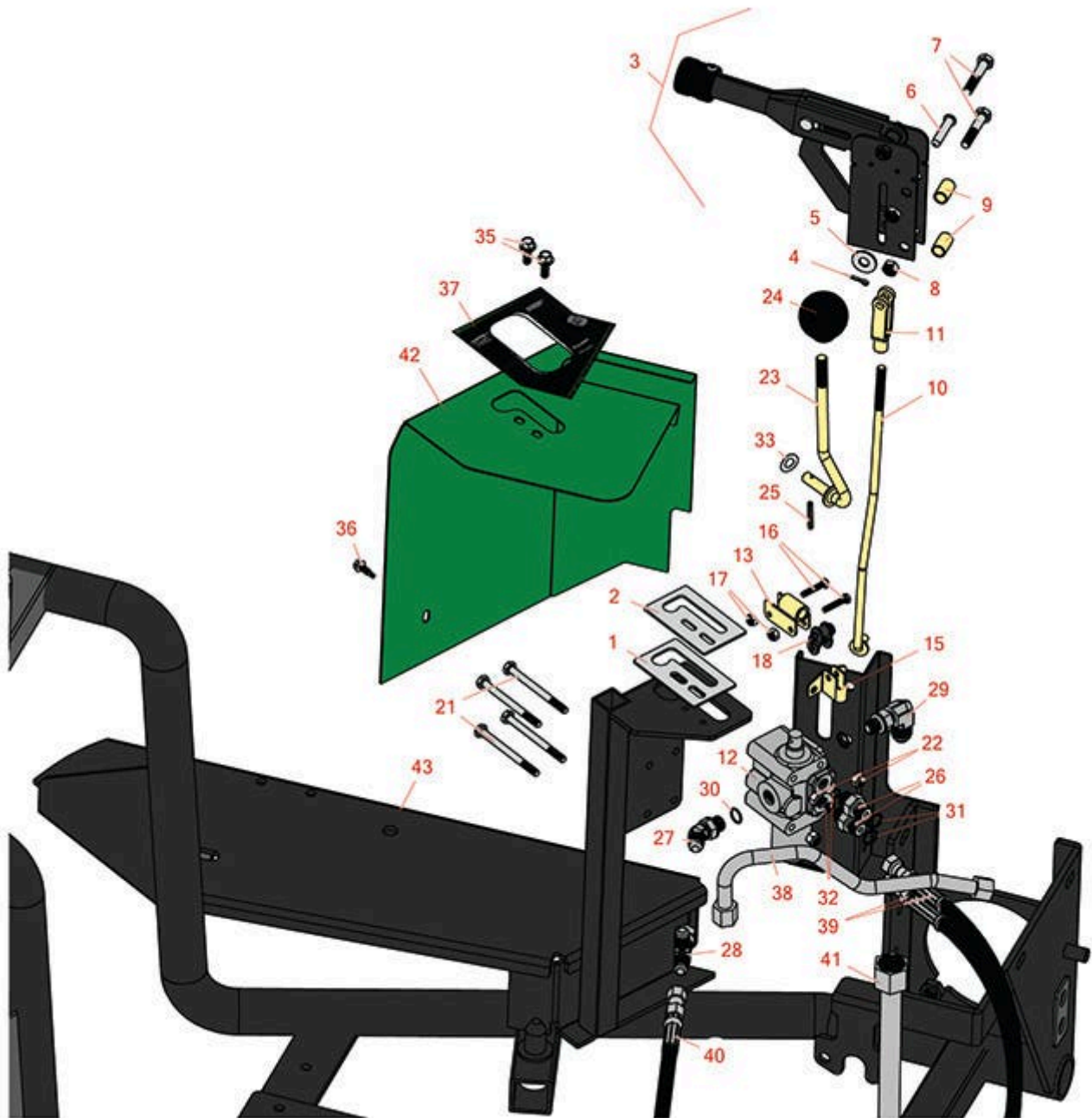


Replaces R&R Products Sand Max 216

Parts

Traction Unit

Hand Brake & Hydraulic Valve



All original equipment manufacturers names and part numbers are used for identification purposes only, and we are in no way implying that our products are original equipment parts. Prices subject to change without notice.



Replaces R&R Products Sand Max 216 Parts

Traction Unit

Hand Brake & Hydraulic Valve



Item No	R&R Part No.	OEM Part No.	Description	Qty Req	Order Quantity
1	R21-8640		Latch-Lever, Valve	1	
2	R95-5833		Guide-Lever	1	
3	R95-0636		Lever Assy - Brake	1	
4	R11M7012		Pin - Cotter 1/8 x 5/8	1	
5	R453009	3256-3, R01-166-0400, R24-10-BD, R24-9-AD, R24H1136, R32-9650, R3256-2, R3256-23, R3256-67, R3290-217, R3556-3, R4-2390, R452006, R7-0152	Washer - Flat 5/16 SAE	1	
6	R283-14		Pin - Clevis	1	
7	R101344	R322-8, R400194	Bolt - Hex HD 5/16-18 x 1-3/4	2	
8	R3296-29	3296-29, R1-804256, R915662P	Locknut - 5/16-18 ESNA	2	
9	R85-0290		Spacer	2	
10	R95-0628		Rod-Brake	1	
11	R282-2	R1-303105	Yoke	1	
12	R43-1710	R21-8550, R43-1710-01, R43-1730	Valve Assy	1	
13	R92-8983		Pivot	1	

All original equipment manufacturers names and part numbers are used for identification purposes only, and we are in no way implying that our products are original equipment parts. Prices subject to change without notice.



Replaces R&R Products Sand Max 216 Parts

*Traction Unit
Hand Brake & Hydraulic Valve*



Item No	R&R Part No.	OEM Part No.	Description	Qty Req	Order Quantity
15	R88-8480	R85-8920	Bracket-Pivot	1	
16	R3290-360		Bolt	2	
17	R3296-2	R32127-10, R9157404	Nut - #10 Lock	2	
18	R2710-20		Link - Offset	1	
21	R321-23		Bolt - Hx HD 1/4-20 x 3	4	
22	R301504	R32127-24, R32146-17, R3296-16, R3296-42, R915661P, RM40333	Locknut - ESNA 1/4-20	4	
23	R92-8981	R92-8981-01	Lift Lever	1	
24	R233-21		Knob	1	
25	R32121-73	R29-56-D, R32121-7, R95462	Pin - Roll	1	
26	R340-92		Hydraulic Fitting - Striaight	2	
27	R353-212	R30-6430, R353-378	Hydraulic Fitting - 45 Deg	1	
28	R353-877		Hydraulic Fitting - Tee 6MJ-6FJX-6MJ	1	
29	R353-511		Hydraulic Fitting - 90 Deg	1	
30	R237-42	R31-4160, R339897	O-Ring	2	
31	R237-22	R107-8844, R232-72, R237-78	O-Ring	2	
32	R237-21		O-Ring	2	

All original equipment manufacturers names and part numbers are used for identification purposes only, and we are in no way implying that our products are original equipment parts. Prices subject to change without notice.



Replaces R&R Products Sand Max 216 Parts

Traction Unit

Hand Brake & Hydraulic Valve



Item No	R&R Part No.	OEM Part No.	Description	Qty Req	Order Quantity
33	R3290-477	R108473	Washer - Spring Wave	1	
35	R3234-33		Bolt - 1/4-20 x 3/4 Serr Hex Flanged	2	
36	R32104-76	R32104-63, R32104-65, R32104-74	Bolt - Hx HD #12 x 3/4 S.D.Imp	1	
37	R95-0647		Decal-Control	1	
38	R95-0575		Tube-Valve, Shuttle	1	
39	R75-6200		Hydraulic Hose Assy	2	
40	R95-0592		Hydraulic Hose Assy	1	
41	R95-0643		Tube-Valve to Cool	1	
42	R95-0601G		Valve Shroud Assy - Green	1	
43	R95-0600B		Frame - Black	1	

All original equipment manufacturers names and part numbers are used for identification purposes only, and we are in no way implying that our products are original equipment parts. Prices subject to change without notice.