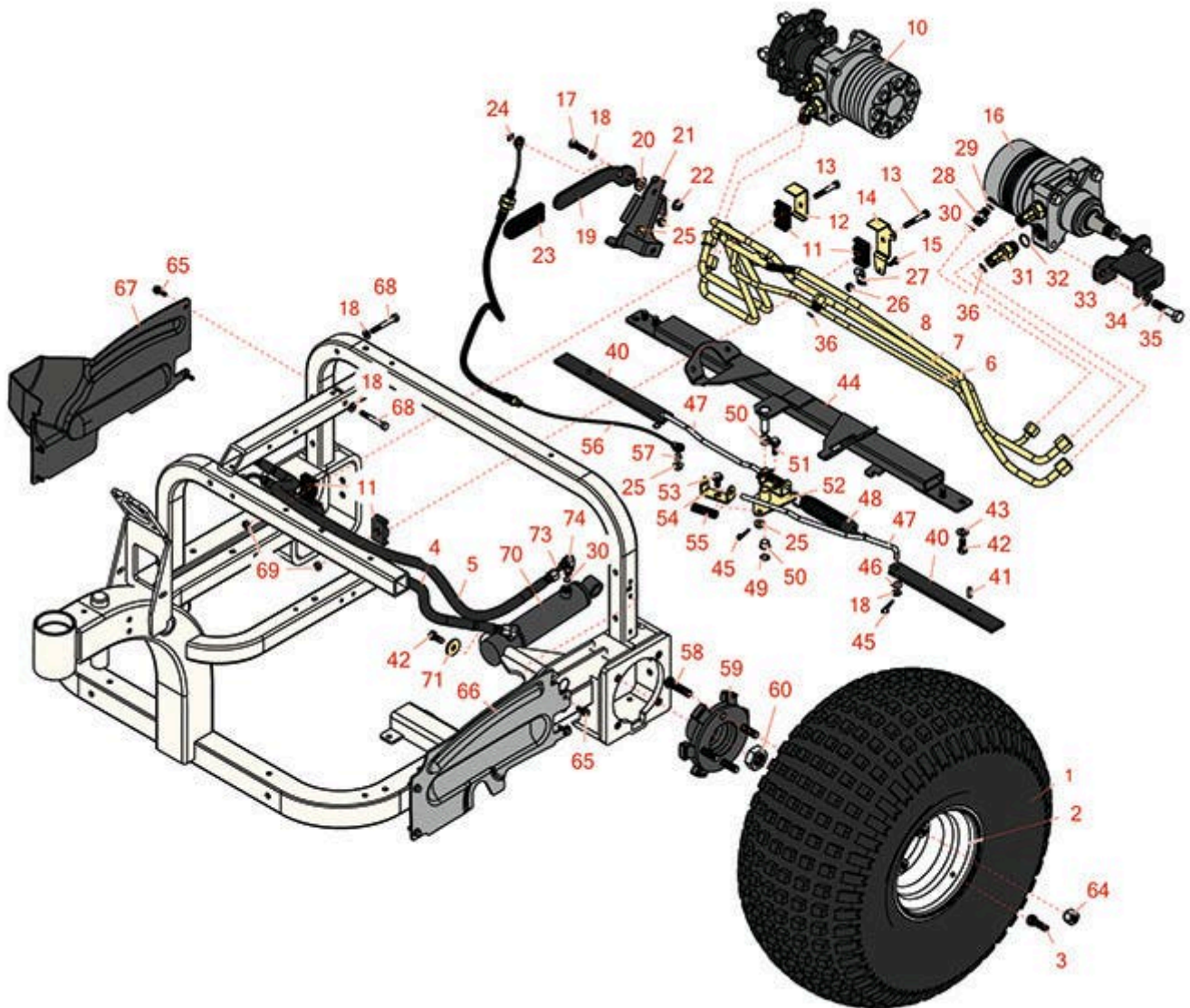




# Replaces R&R Products Sand Max 516

## Parts

*Traction Unit  
Rear Wheel*



All original equipment manufacturers names and part numbers are used for identification purposes only, and we are in no way implying that our products are original equipment parts. Prices subject to change without notice.



# Replaces R&R Products Sand Max 516

## Parts

Traction Unit

Rear Wheel



Item No	R&R Part No.	OEM Part No.	Description	Qty Req	Order Quantity
---------	--------------	--------------	-------------	---------	----------------

### Tires

0	<b>TIRES</b>		<a href="#">Click Here to View Complete Tire Selection</a>	0	
---	--------------	--	--	---	--

1	<b>RCT537050</b>	R546547	Tire - 22x11.00-8 Nhs (2 Ply) Carlisle Knobby	2	
---	------------------	---------	---	---	--

*Detail Description: Elevate your off-road adventures with the Carlisle Knobby tire. This tire offers a unique design with options available in both solid and dimple tread patterns. Whether you're tackling rugged trails or navigating through challenging terrain, the Carlisle Knobby tire delivers maximum performance and traction. It is specially designed for ATVs and golf carts, providing the reliability and durability you need for your outdoor adventures. Upgrade your ATV or golf cart with the Carlisle Knobby tire and experience the difference it makes in your outdoor excursions. Maximize your traction, durability, and versatility. Buy the Carlisle Knobby tire today and unleash the full potential of your off-road adventures.:*

2	<b>R94-6116</b>	R114-4643, R242-53, R242-86, R46-4810	Rim - 8x8.5 White	2	
---	-----------------	--	-------------------	---	--

3	<b>R232-24</b>	R232-35, R341680, R363233, R814687	Stem - Valve w/ Cap	2	
---	----------------	---	---------------------	---	--

### Hoses

4	<b>R100-3833</b>		Hydraulic Hose Assy	1	
---	------------------	--	---------------------	---	--

5	<b>R95-8837</b>	R105-4348	Hydraulic Hose Assy	1	
---	-----------------	-----------	---------------------	---	--

6	<b>R110-1330</b>		Tube Assy	1	
---	------------------	--	-----------	---	--

7	<b>R110-1323</b>		Tube Assy	1	
---	------------------	--	-----------	---	--

8	<b>R108-8406</b>		Tube Assy	1	
---	------------------	--	-----------	---	--

### Other Parts Available

10	<b>R108-2949</b>		Hydraulic Motor - Wheel	1	
----	------------------	--	-------------------------	---	--

11	<b>R56-7976</b>		Clamp - Tube	4	
----	-----------------	--	--------------	---	--

All original equipment manufacturers names and part numbers are used for identification purposes only, and we are in no way implying that our products are original equipment parts. Prices subject to change without notice.



# Replaces R&R Products Sand Max 516

## Parts

*Traction Unit*

*Rear Wheel*



Item No	R&R Part No.	OEM Part No.	Description	Qty Req	Order Quantity
12	R110-1333		Bracket-Clamp	1	
13	R322-10	R20-30-AD, R24-7180, R3223-6, R513347	Bolt - Hex HD 5/16-18 x 2	2	
14	R110-1332		Bracket-Clamp	1	
15	R400106	R321-3, R513315, R908002P	Bolt - Hex HD 1/4-20 x 5/8	1	
16	R108-2947		Hydraulic Motor - Wheel	1	
17	R400264	323-7, R01-150-0180, R01-178-0610, R19H1732, R20-48-AD, R20-48-AGD, R32-9160, R3224-3, R323-29, R323-7, R400264, R908035P	Bolt - Hex HD 3/8-16 x 1-1/4	1	
18	R453009	3256-3, R01-166-0400, R24-10-BD, R24-9-AD, R24H1136, R32-9650, R3256-2, R3256-23, R3256-67, R3290-217, R3556-3, R4-2390, R452006, R7-0152	Washer - Flat 5/16 SAE	5	
19	R108-7991-03		Brake Lever Assy	1	
20	R108-7994		Bushing-Pivot, Lev	1	

All original equipment manufacturers names and part numbers are used for identification purposes only, and we are in no way implying that our products are original equipment parts. Prices subject to change without notice.



# Replaces R&R Products Sand Max 516

## Parts

*Traction Unit*

*Rear Wheel*



Item No	R&R Part No.	OEM Part No.	Description	Qty Req	Order Quantity
21	<b>R108-7988-03</b>		Brake Lever Bracket	1	
22	<b>R104-8301</b>	R109-6658, R133-7570	Locknut - 3/8-16 Nylon Flanged	1	
23	<b>R21-1880</b>		Grip-Handle	1	
24	<b>R32151-47</b>	R32151-17	Ring-Retaining	1	
25	<b>R104-8300</b>	R119-4041	Locknut - 5/16-18 Flanged Y/Zinc	4	
26	<b>R301504</b>	R32127-24, R32146-17, R3296-16, R3296-42, R915661P, RM40333	Locknut - ESNA 1/4-20	1	
27	<b>R2412-89</b>	R2412-113	Clamp	1	
28	<b>R340-2</b>	R60-1920	Hydraulic Fitting - Striaight	1	
29	<b>R237-42</b>	R31-4160, R339897	O-Ring	3	
30	<b>R237-22</b>	R107-8844, R232-72, R237-78	O-Ring	1	
31	<b>R340-89</b>		Hydraulic Fitting - 45 Deg	4	
32	<b>R237-80</b>	R327-80	O-Ring	4	
33	<b>R108-7973-03</b>		Brake Bracket Assy	2	
34	<b>R3253-7</b>	R01-166-0030, R01-166-0080, R01-166-0290, R01-166-0810, R23-13-GD, R48-9380	Washer - Lock 1/2	8	

All original equipment manufacturers names and part numbers are used for identification purposes only, and we are in no way implying that our products are original equipment parts. Prices subject to change without notice.



# Replaces R&R Products Sand Max 516

## Parts

*Traction Unit*

*Rear Wheel*



Item No	R&R Part No.	OEM Part No.	Description	Qty Req	Order Quantity
35	R325-10	R01-150-0620, R01-178-0820, R20-91-AGD, R3226-6	Bolt	8	
36	R237-30	R23-6320	O-Ring - Seal	2	
40	R108-7986-03		Bar - Brake	2	
41	R32121-11		Pin - Roll 1/4 x 3/4	2	
42	R400260	R01-178-0605, R18-4100, R19-8270, R323-3, R323-33, R323-34, R323-5	Bolt - Hex HD 3/8-16 x 7/8	4	
43	R453011	3256-24, 453011, R01-166-0100, R01-166-0120, R01-166-0270, R01-166-0500, R01-166-0600, R01-166-0620, R132-4593, R237-12, R24-10-AD, R24-11-AD, R24-11-BD, R24-12-AD, R24-12-BD, R30-9310, R32-8190, R3256-24, R3256-3, R3256-36, R3256-4, R47-9950	Washer - Flat 3/8 SAE Y/Zinc	4	
44	R108-2819B		Engine Mount Assy	1	
45	R3290-307		Pin-Hair	4	

All original equipment manufacturers names and part numbers are used for identification purposes only, and we are in no way implying that our products are original equipment parts. Prices subject to change without notice.



# Replaces R&R Products Sand Max 516

## Parts

*Traction Unit  
Rear Wheel*



Item No	R&R Part No.	OEM Part No.	Description	Qty Req	Order Quantity
46	R3290-301		Washer - Spring Wave	2	
47	R108-7987		Link-Latch - Parking	2	
48	R66-4270-03	R66-4270	Spring-Extension	1	
49	R32120-47	R4583, R5701P	Ring-Retaining - External	1	
50	R256-257	R256-295	Nyliner Bushing	2	
51	R19-1471		Screw-Shoulder	1	
52	R108-7979-03		Bellcrank Assy	1	
53	R19-1470		Screw-Shoulder	1	
54	R106-8890-03		Clevis-Latch, Park	2	
55	R107-3376		Spring-Compression	2	
56	R108-7913		Cable- Parking Brake	1	
57	R108-7983		Bushing-Cable	1	
58	R85-6540		Stud - Drive 1/2-20 x 2	8	
59	R108-7977-03		Hub-Wheel	2	
60	R26-3790		Nut - Hex - Wheel Motor 1-20	2	
64	R242-50		Nut - 1/2-20 Wheel	8	
65	R32144-10	R32140-81, R32144-3, R34-140-AMVD	Bolt - 1/4-20 x 3/4 Serrated Hx Wshr	8	
66	R108-6856		Shroud-Wheel, LH	1	
67	R108-6855		Shroud-Wheel, RH	1	

All original equipment manufacturers names and part numbers are used for identification purposes only, and we are in no way implying that our products are original equipment parts. Prices subject to change without notice.



# Replaces R&R Products Sand Max 516 Parts

*Traction Unit  
Rear Wheel*



Item No	R&R Part No.	OEM Part No.	Description	Qty Req	Order Quantity
68	R322-11	322-11, R01-150-0390, R01-178-0518, R20-31-AD, R3223-7	Bolt - 5/16-18 x 2 1/4 Hx HD	2	
69	R3296-29	3296-29, R1-804256, R915662P	Locknut - 5/16-18 ESNA	2	
70	R110-1338		Hydraulic Cylinder	1	
71	R63-8410	R53-6380, R63-4810	Washer - Isolator Bushing	1	
73	R237-21		O-Ring	2	
74	R340-132		Hydraulic Fitting - 90 Deg	2	

All original equipment manufacturers names and part numbers are used for identification purposes only, and we are in no way implying that our products are original equipment parts. Prices subject to change without notice.