

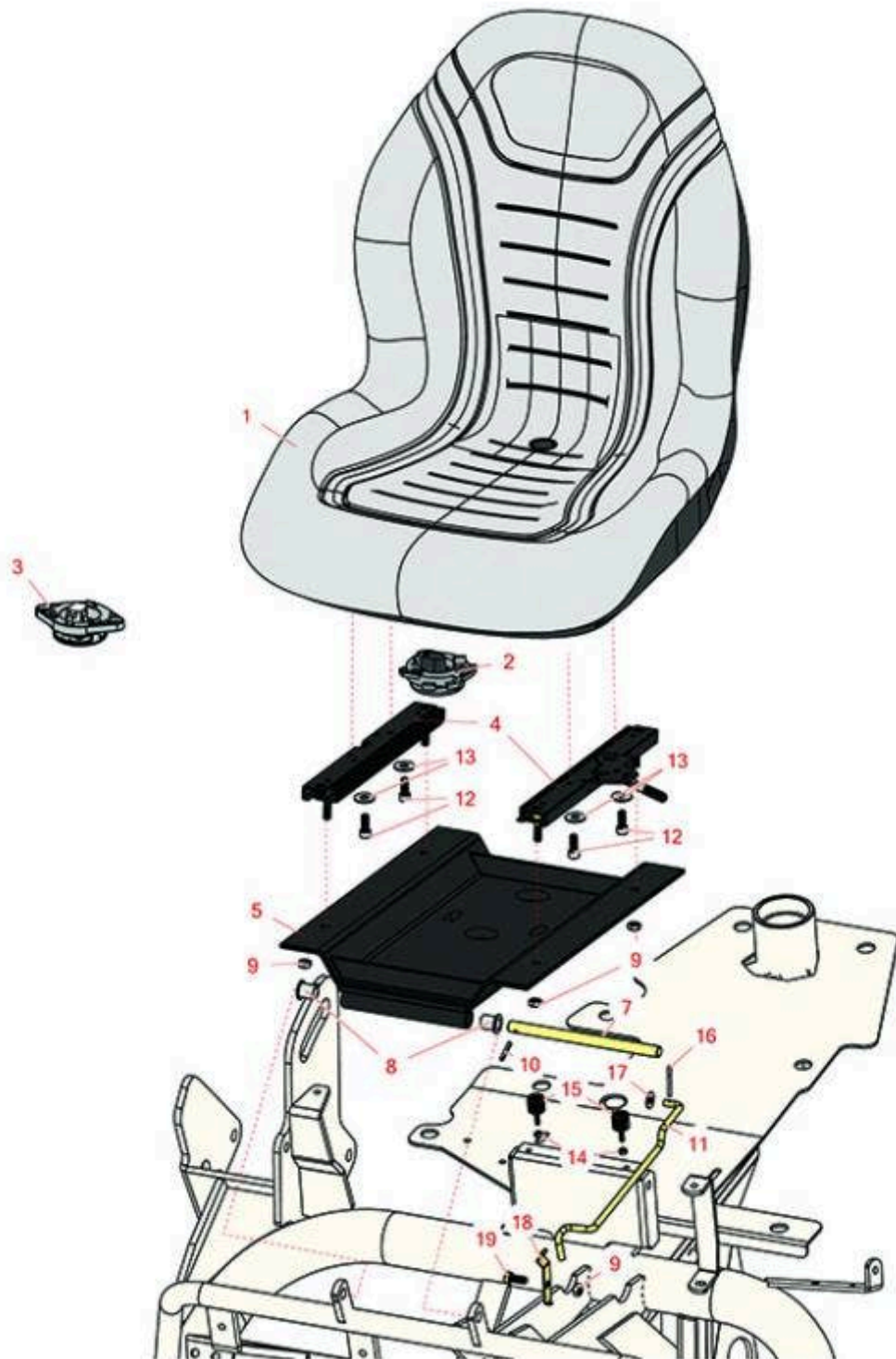


# Replaces R&R Products Versa-Green

## 2160D Parts

*Traction Unit*

*Seat*



All original equipment manufacturers names and part numbers are used for identification purposes only, and we are in no way implying that our products are original equipment parts. Prices subject to change without notice.



# Replaces R&R Products Versa-Green 2160D Parts

Traction Unit  
Seat



Item No	R&R Part No.	OEM Part No.	Description	Qty Req	Order Quantity
1	RMXB200GY	R100-3187, R1001774, R104-4620, R21-4880, R351-59, R351-76, R4139438, R49-8130, R63-9410, R66-5400, R66172, R75-9190, R750105, R92-6280	Milsco Seat XB200 - Grey	1	

*Tech Note: This seat will not accept seat belts:*

*Detail Description: The Milsco XB200 high back seat features a comfortable vacuum formed, waterproof vinyl cover with central drain hole. Ergonomic foam cushion provides operator comfort. Cover will not crack or peel. Rugged blow-molded plastic frame construction. Allows for Twist-in operator presence switch. Seat: 19in W x 24in D x 21in H. Multiple pre-drilled mounting patterns. Grey. Made in U.S.A.<BR>Please note: Due to excessive air freight charges, this item will be shipped ground freight.:*

1	R120-5179		Large Seat Cover - Gray	1	
---	-----------	--	-------------------------	---	--

## Gauges and Controls

2	R151541		Delta Seat Switch - Twist Mount 1 Pole Normally Open	1	
3	R92-6282	R554390, RAET10449	Switch - Kill - Seat	1	

## Other Parts Available

4	R150224	R133-8896, R92-8990, R92-8991	Adjusters - Seat (Set of 2)	1	
5	R150231		Seat Support Assy	1	
7	R49-5580		Shaft - Support Seat	1	

All original equipment manufacturers names and part numbers are used for identification purposes only, and we are in no way implying that our products are original equipment parts. Prices subject to change without notice.



# Replaces R&R Products Versa-Green 2160D Parts

*Traction Unit  
Seat*



Item No	R&R Part No.	OEM Part No.	Description	Qty Req	Order Quantity
8	<b>R256-155</b>	R265-155	Bushing - Flanged	2	
9	<b>R3296-29</b>	3296-29, R1-804256, R915662P	Locknut - 5/16-18 ESNA	4	
10	<b>R32121-45</b>	R32121-113, R32121-92	Pin - Spring Roll 5/32 x 1	1	
11	<b>R150232</b>		Rod - Seat - Prop	1	
12	<b>R434024</b>	434024, R3274-12	Bolt - Soc HD Cap 5/16-18 x 3/4	4	
13	<b>R453009</b>	3256-3, R01-166-0400, R24-10-BD, R24-9-AD, R24H1136, R32-9650, R3256-2, R3256-23, R3256-67, R3290-217, R3556-3, R4-2390, R452006, R7-0152	Washer - Flat 5/16 SAE	4	
13	<b>R310266</b>	3256-3, R09056, R452004	Washer - Flat 5/16 USS	4	
14	<b>R6040-106</b>	R32127-33, R3296-27	Locknut - Stainless	2	
15	<b>R6050-119</b>		Bumper - Rubber - 5/8 in	2	
16	<b>R3272-10</b>	R01-151-0120	Pin - Cotter 1/8 x 3/4	1	

All original equipment manufacturers names and part numbers are used for identification purposes only, and we are in no way implying that our products are original equipment parts. Prices subject to change without notice.



# Replaces R&R Products Versa-Green 2160D Parts

*Traction Unit  
Seat*



Item No	R&R Part No.	OEM Part No.	Description	Qty Req	Order Quantity
17	R453011	3256-24, 453011, R01-166-0100, R01-166-0120, R01-166-0270, R01-166-0500, R01-166-0600, R01-166-0620, R132-4593, R237-12, R24-10-AD, R24-11-AD, R24-11-BD, R24-12-AD, R24-12-BD, R30-9310, R32-8190, R3256-24, R3256-3, R3256-36, R3256-4, R47-9950	Washer - Flat 3/8 SAE Y/Zinc	1	
18	R68-5310		Clip - Rod - Prop	1	
19	R322-1	R01-178-0504, R20-22-AD, R20-22-AGD, R513337, RB310801	Bolt - Hex HD 5/16-18 x 1/2	1	

All original equipment manufacturers names and part numbers are used for identification purposes only, and we are in no way implying that our products are original equipment parts. Prices subject to change without notice.