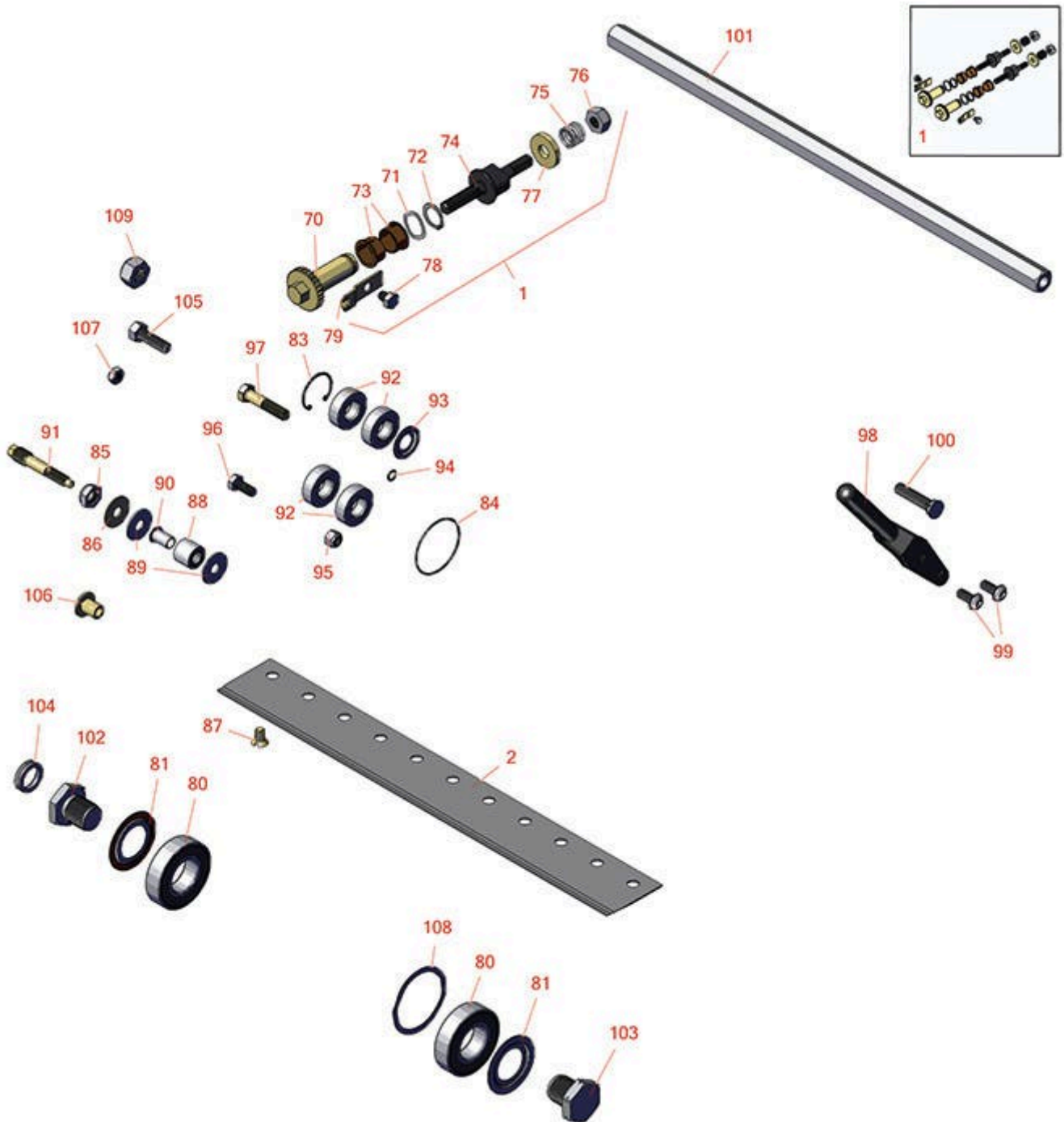




Replaces Toro Greensmaster 1018 Parts

Cutting Unit - Models 04823 & 04824
Reel & Bedknife



All original equipment manufacturers names and part numbers are used for identification purposes only, and we are in no way implying that our products are original equipment parts. Prices subject to change without notice.



Replaces Toro Greensmaster 1018 Parts

Cutting Unit - Models 04823 & 04824
Reel & Bedknife



Item No	R&R Part No.	OEM Part No.	Description	Qty Req	Order Quantity
Overhaul Kits					
1	R121-2637	121-2637	Overhaul Kit - DPA Adjusters	1	
R&R Bedknives, Lifetime Guaranteed					
2	R110-2300	110-2300	Bedknife - Micro Cut Extended .062 - .187 HOC	1	
2	R110-2301	110-2301	Bedknife - Low Cut .187 - 1.00 HOC	1	
2	R98-7260	98-7260, 98-7260-05	Bedknife - Tournament .125 - .500 HOC	1	
2	R98-7261	98-7261	Bedknife - Micro Cut .062 - .187 HOC	1	
R&R Razor Tool Steel, Lifetime Guaranteed					
2	R117-1530	117-1530	Bedknife - Razor Tool Steel - 18 Micro Cut .062 - .187 HOC	1	
2	R117-1532	117-1532	Bedknife - Razor Tool Steel - Tournament .125 - .500 HOC	1	
Other Parts Available					
70	R106-5363	106-5363	Shaft - Adjusting - Bed Bar - Stainless	2	
71	R119-4164	119-4164	Washer - Wave	2	
72	R32120-93	32120-93	Snap Ring - HD	2	
73	R106-5344	106-5344	Bushing - Flanged and Keyed	4	
74	R115-7039	115-7039	Screw - Adjuster - Bedbar	2	
74	R137-6130	137-6130	Screw - Adjuster - Hardened - Bedbar	2	
75	R119-4156	119-4156	Spring - Compression	2	
76	R3296-48	119-4039, 32146-7, 3296-34, 3296-48	Locknut - 7/16-14 ESNA	2	
77	R119-4155	119-4155	Washer - Hardened	2	

All original equipment manufacturers names and part numbers are used for identification purposes only, and we are in no way implying that our products are original equipment parts. Prices subject to change without notice.



Replaces Toro Greensmaster 1018 Parts

Cutting Unit - Models 04823 & 04824
Reel & Bedknife



Item No	R&R Part No.	OEM Part No.	Description	Qty Req	Order Quantity
78	R114-9396	114-9396, 119-4067	Bolt - Hex HD 5/16-18 x 3/8	2	
79	R99-2097	99-2097	Detent - Bed Bar Adjuster	2	
80	R115-3296	115-3296	Bearing	2	
80	R140-5510	140-5510	Bearing - Sealed Stainless	2	
81	R115-3299	115-3299	Seal- Flocked	2	
83	R458461	32151-34	Snap Ring	1	
84	R360-0398	360-0398	O-Ring	1	
85	R3296-28	119-4154, 140-9234, 32127-34, 32128-7, 32128-8, 32136-7, 3296-28	Nut - 1/2-20 ESNA Jam	2	
86	R52-2860	119-4150, 52-2860	Washer - Bed Bar Pivot	2	
87	R119-4151	119-4151	Screw - Bedknife 5/16-18 x 17/32	11	
88	R119-4153	119-4153	Bushing - Rubber	2	
89	R52-2900	52-2900	Washer - Nylon	4	
90	R52-2890	52-2890	Bushing - Flanged	2	
91	R117-9493	117-9493	Bolt - Bed Bar - Hardened	2	
92	R115-6869	115-6869	Bearing - Ball -Stainless	4	
92	R117-6831	117-6831	Bearing - Stainless	4	
93	R115-6923	115-6923	Shield - Bearing - Flocked	1	
94	R237-21	237-21, 327-21	O-Ring	1	

All original equipment manufacturers names and part numbers are used for identification purposes only, and we are in no way implying that our products are original equipment parts. Prices subject to change without notice.



Replaces Toro Greensmaster 1018 Parts

Cutting Unit - Models 04823 & 04824
Reel & Bedknife



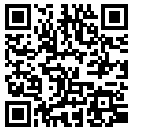
Item No	R&R Part No.	OEM Part No.	Description	Qty Req	Order Quantity
95	R3296-47	3296-47	Locknut - 5/16-18 Jam Nyloc	2	
96	R322-3	01-150-1420, 01-178-0506, 20-24-AD, 20-24-AGD, 322-3, 48-9270, 513339, 908017P	Bolt - Hex HD 5/16-18 x 3/4	1	
97	R323-9	01-150-0190, 01-150-1540, 01-178-0614, 107229, 20-50-AD, 20-50-AGD, 30-9430, 32105-4, 3224-5, 323-9, 513363, 513364, 5377, 908037P	Bolt - Hex HD 3/8-16 x 1-3/4	1	
98	R65-8570	65-7250, 65-8570	Rod - Mounting Grass Basket	2	
99	R3274-55	3274-55	Bolt - 5/16-18 x 3/4 Button HD Soc	4	
100	R99-3773	99-3773	Bolt- Plow 3/8-16 x 1 3/4	2	
101	R138-1541	138-1541	Rod - Frame	1	
102	R133-9168	133-9168	Nut - Reel - RH Thread	1	
103	R137-0326	137-0326	Nut - Reel - LH Thread	1	
104	R138-1549	138-1549	Seal	1	
105	R3274-1	3274-1	Bolt - 3/8-16 x 1 1/4 Soc HD Cap	2	
106	R71-4411	71-4411	Spacer - Coupling	2	

All original equipment manufacturers names and part numbers are used for identification purposes only, and we are in no way implying that our products are original equipment parts. Prices subject to change without notice.



Replaces Toro Greensmaster 1018 Parts

Cutting Unit - Models 04823 & 04824
Reel & Bedknife



Item No	R&R Part No.	OEM Part No.	Description	Qty Req	Order Quantity
107	R3296-29	1-804256, 3290-357, 3296-29, 915662P	Locknut - 5/16-18 ESNA	2	
108	R105-5700	105-5700, 115-5258	Wave Washer - Bearing	1	
109	R3296-25	30-3380, 32127-21, 32127-31, 3290-160, 3290-33, 3296-13, 3296-25, 3296-45, 329645	Locknut - 1/2-13 Heavy ESNA	2	

All original equipment manufacturers names and part numbers are used for identification purposes only, and we are in no way implying that our products are original equipment parts. Prices subject to change without notice.