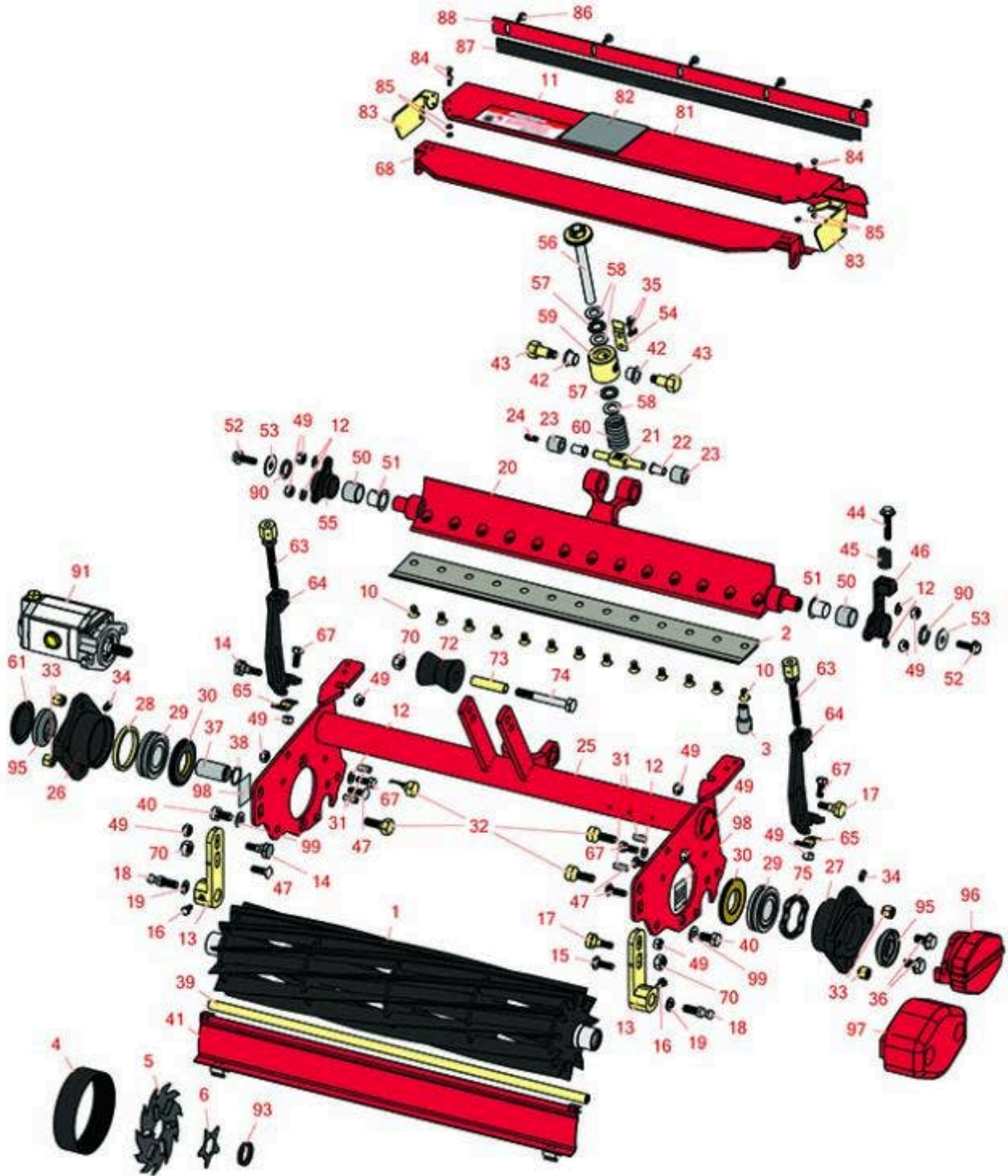




Replaces Toro Greensmaster 3050 Parts

SPA Cutting Unit - Models 04472, 04473, 04482 & 04483
Reel & Bedknife



All original equipment manufacturers names and part numbers are used for identification purposes only, and we are in no way implying that our products are original equipment parts. Prices subject to change without notice.



Replaces Toro Greensmaster 3050 Parts

SPA Cutting Unit - Models 04472, 04473, 04482 & 04483
Reel & Bedknife



Item No	R&R Part No.	OEM Part No.	Description	Qty Req	Order Quantity
R&R Reels, Lifetime Guaranteed					
1	R94-8037	94-4357, 94-8037	Reel - 11 Blade	1	
1	R94-4356	94-4356, 94-8039	Reel - 8 Blade	1	
R&R Bedknives, Lifetime Guaranteed					
2	R150466	63-8600, 64-6393, 94-6393	Bedknife - Super Thick .312 - 1.00 HOC	1	
2	R94-6392	62-2500, 94-6392	Bedknife - High Cut .312 - 1.00 HOC	1	
2	R93-4264	57-4960, 63-8470, 93-4264	Bedknife - Low Cut .187 - 1.00 HOC	1	
2	R93-4263	63-8560, 66-9320, 93-4263, 93-6039	Bedknife - Tournament Cut .125 - .500 HOC	1	
2	R99-4299	99-4299	Bedknife - Tournament Extended	1	
2	R93-4262	65-8250, 93-4262, 93-4263	Bedknife - Micro Cut .062 - .187 HOC	1	
2	R108-4302	108-4301, 108-4302	Bedknife - Tournament Cut Extended .125 - .500 HOC	1	
2	R108-4303	104-7720, 108-4303	Bedknife - Micro Cut Extended .062 - .187 HOC	1	
2	R94-6396	10-4900, 54-9150, 94-6396, Oct-00	Bedknife - High Cut 5/16"-1" HOC	1	

R&R Razor Tool Steel Bedknives, Lifetime Guaranteed

All original equipment manufacturers names and part numbers are used for identification purposes only, and we are in no way implying that our products are original equipment parts. Prices subject to change without notice.



Replaces Toro Greensmaster 3050 Parts

SPA Cutting Unit - Models 04472, 04473, 04482 & 04483
Reel & Bedknife



Item No	R&R Part No.	OEM Part No.	Description	Qty Req	Order Quantity
2	R115-1881	115-1881	Bedknife - Razor Tool Steel - 21 Tournament Cut .125 - .500 HOC	1	
<i>Tech Note: Razor Tool Steel Bedknives are constructed from high grade tool steel for extended life and optimum cut.:</i>					
2	R115-1880	115-1880	Bedknife - Razor Tool Steel - 21 Micro Cut .062 - .187 HOC	1	
<i>Tech Note: Razor Tool Steel Bedknives are constructed from high grade tool steel for extended life and optimum cut.:</i>					
2	R150492	150492	Bedknife - Razor Tool Steel - 21 Micro Cut Ext	1	
<i>Tech Note: Razor Tool Steel Bedknives are constructed from high grade tool steel for extended life and optimum cut.:</i>					
Service Tools					
3	R51-0880	51-0880	Bedknife Screw Driver Tool	0	
Belts					
4	R95-0728	95-0728	Belt - Fits Groomer	1	
Rotary Blades or Blades					
5	R150209C	106-6355	Verti-Cut Blade - Carbide Tipped 2mm	36	
6	R95-5719	95-5719	Blade - Groomer	41	
Other Parts Available					
10	R150477	57-4910	Screw - Bedknife 5/16-18 x 1/2	13	
11	R354083	104-7729, 354083	Decal - Danger	1	
12	R3256-74	3256-74	Washer - Flat	4	
13	R94-8170	94-8170	Bracket - Roller Front	2	

All original equipment manufacturers names and part numbers are used for identification purposes only, and we are in no way implying that our products are original equipment parts. Prices subject to change without notice.



Replaces Toro Greensmaster 3050 Parts

SPA Cutting Unit - Models 04472, 04473, 04482 & 04483
Reel & Bedknife



Item No	R&R Part No.	OEM Part No.	Description	Qty Req	Order Quantity
14	R95-1617	105-3833, 95-1617	Bolt - Eccentric Front Roller Bkt	1	
15	R33125-025	33125-025	Bolt - Carriage M10 x 25 w/Nut	4	
16	R48-7610	33113-012, 48-7610	Bolt - Hex HD Nyloc M6 x 12	2	
17	R105-3834	105-3834, 95-1618	Bolt - Shoulder	1	
18	R94-2958	94-2958	Stud - Alloy Ball Joint	2	
19	R3254-6	01-166-0010, 01-166-0280, 01-166-0610, 3253-5, 3254-18, 3254-6, 3290-223, 48-9370	Washer - Lock 3/8	2	
20	R93-2511	93-2511	Bed Bar	1	
21	R52-2920	52-2920	Pivot - Bed Bar	1	
22	R52-2890	52-2890	Bushing - Flanged	2	
23	R62-5510	52-2870, 62-5510	Bushing	2	
24	R302-18	302-18	Zerk - Grease Press Style	1	
25	R95-1634-01	95-1634, 95-1634-01	Frame - Reel Single Point Adj.	1	
25	R93-2500	105-9766, 93-2500	Frame - Fits 3200	1	
25	R105-9767	105-9767	Frame Assy - Single Point Adj.	1	
26	R94-4545	94-4545	Housing - Bearing	2	

All original equipment manufacturers names and part numbers are used for identification purposes only, and we are in no way implying that our products are original equipment parts. Prices subject to change without notice.



Replaces Toro Greensmaster 3050 Parts

SPA Cutting Unit - Models 04472, 04473, 04482 & 04483
Reel & Bedknife



Item No	R&R Part No.	OEM Part No.	Description	Qty Req	Order Quantity
26	R105-3825	105-3825	Housing - Bearing RH	1	
27	R105-3826	105-3826	Housing - Bearing LH	1	
28	R94-4544	94-4544	Spacer - Reel	1	
29	R93-2489	93-2489	Bearing - Reel	2	
29	R105-3827	105-3827	Bearing - Reel	2	
30	R94-8908	93-2483, 94-8908	Seal - Reel	2	
30	R105-3824	105-3824	Seal - Reel Double Lip	2	
31	R32121-123	32121-123	Pin - Spring Roll 5/16 x 3/4	4	
32	R94-1341	94-1341	Bolt - Wheel	4	
33	R93-2454	93-2454	Nut - 3/8-16 Tapered	4	
34	R302-5	21-6010, 302-11, 302-37, 302-47, 302-5, 302-57, 302-58, 302-6, 31-0300, 32-9660, 60-0800, 62-3880, 92-4181	Fitting - Grease	4	
35	R33113-008	33113-008	Bolt - Hex HD M6-1.0 x 8	2	
36	R93-2569	93-2569	Bolt - Hex Washer Nyloc M10	4	
37	R94-4507	94-4507	Coupling - Reel	1	
38	R32120-37	32120-37	Ring - Internal Retaining Reel	1	

All original equipment manufacturers names and part numbers are used for identification purposes only, and we are in no way implying that our products are original equipment parts. Prices subject to change without notice.



Replaces Toro Greensmaster 3050 Parts

SPA Cutting Unit - Models 04472, 04473, 04482 & 04483
Reel & Bedknife



Item No	R&R Part No.	OEM Part No.	Description	Qty Req	Order Quantity
39	R93-2477	93-2477, 98-2196	Rod - Grass Shield	1	
40	R48-7770	106-0276, 33115-020, 48-7770	Bolt - Hex HD M10 x 20	2	
41	R93-2475	93-2475	Shield - Grass Front	1	
42	R93-2891	93-2891	Bushing - Plastic For Bed Bar	2	
43	R93-2545	93-2545	Bolt - Pivot	2	
44	R33104-040	33104-00, 33104-040	Bolt - Hex Washer M8 x 40	1	
44	R94-3489	75-8530, 94-3489	Bolt - Hex HD M8 x 50	1	
45	R93-2516	93-2516	Spring - Pivot Hub Bed Bar	1	
46	R93-2512	93-2512	Hub - Pivot LH Bed Bar	1	
46	R100-3381	100-3381	Hub - Pivot LH Bed Bar	1	
<i>Tech Note: Includes R93-7501:</i>					
47	R33124-025	33124-025	Bolt - Carriage M8-1.25 x 25	4	
49	R33024-00	33024-00	Locknut - 8mm x 1.25	4	
50	R93-7501	93-7501	Bushing	2	
51	R93-7502	93-7502	Bushing - Flanged Nylon	2	
52	R33104-020	33104-020	Bolt - Hex Washer HD	1	
53	R3256-82	3256-82	Washer - Flat	1	
54	R93-2522	93-2522	Arm - Spring	1	
55	R93-2513	93-2513	Hub - Pivot RH	1	

All original equipment manufacturers names and part numbers are used for identification purposes only, and we are in no way implying that our products are original equipment parts. Prices subject to change without notice.



Replaces Toro Greensmaster 3050 Parts

SPA Cutting Unit - Models 04472, 04473, 04482 & 04483
Reel & Bedknife



Item No	R&R Part No.	OEM Part No.	Description	Qty Req	Order Quantity
55	R100-3380	100-3380	Hub - Pivot RH Bed Bar	1	
<i>Tech Note: Includes R93-7501:</i>					
56	R93-2550	93-2550	Handle - Bed Bar Adjustment	1	
57	R77-0350	77-0350	Retainer - Bearing	2	
58	R257-5	257-5	Washer - Thrust	3	
59	R93-2518	93-2518	Housing - Pivot	1	
60	R93-2562	93-2562	Spring - Bed Bar Adj	1	
61	R150485	2410-30, 2410-30OSS	Cap - Protective Bearing Housing	1	
63	R93-2523	93-2523	Adjusting - Assy Height of Cut	2	
63	R95-1633	95-1633	Adjustment - HOC	2	
64	R95-1638	95-1638	Bracket Only - HOC Adj	2	
65	R99-8168	95-1637, 99-8168	Collar - Bracket HOC	0	
67	R33123-016	33123-016, 33123-020	Bolt - Carriage M6 x 20	2	
67	R66-3160	33114-020, 43-0110, 48-7710, 66-3160	Bolt - Flanged Hex HD	2	
68	R93-2481	93-2481	Shield - Grass Rear	1	
70	R33025-00	32025-00, 33025-00	Locknut - 10mm x 1.5 Jam	4	
72	R93-2463	93-2463	Roller - Lift	1	
73	R93-2464	93-2464	Spacer - Roller	1	

All original equipment manufacturers names and part numbers are used for identification purposes only, and we are in no way implying that our products are original equipment parts. Prices subject to change without notice.



Replaces Toro Greensmaster 3050 Parts

SPA Cutting Unit - Models 04472, 04473, 04482 & 04483
Reel & Bedknife



Item No	R&R Part No.	OEM Part No.	Description	Qty Req	Order Quantity
74	R33115-080	33115-080	Bolt - Hex HD M10 x 80	1	
75	R94-4543	94-4543	Spring - Flat Reel	2	
81	R99-4197	99-4197	Shield - Rear Assy	1	
82	R99-1456	99-1456	Pad - Wear Grass Shield	1	
83	R99-4151	99-4151	Deflector - RH Grass Shield	1	
83	R99-4152	99-4152	Deflector - Grass Shield LH	1	
84	R60-6500	60-6500, 65-6500	Bolt - Hex HD M4 x 10	4	
85	R46-0430	46-0430	Locknut - 4mm	4	
86	R32144-73	104-2065, 32144-73	Screw - Machine Hex Washer Head	5	
87	R95-1636	95-1636	Seal - Strip Grass Shield	1	
88	R36-7260	36-7260	Bar - Cut Off Grass Shield	1	
90	R93-7510	93-7510	Ring - Quad RH Pivot Hub	1	
91	R120-2072	100-6426, 108-6487, 112-9200, 120-2072, 93-1375	Hydraulic Gear Motor	3	
93	R70-1350	70-1350	Spacer - 1/4 Fits Groomer Shaft	84	
95	R104-2067	104-2067	Spacer - End - Motor	2	
96	R95-1642-01	93-2570, 95-1642, 95-1642-01	Counterweight	1	
97	R100-7113-01	100-7113-01	Counterweight	1	
98	R94-8169	94-8169	Decal - Front Roller Bkt Position	2	

All original equipment manufacturers names and part numbers are used for identification purposes only, and we are in no way implying that our products are original equipment parts. Prices subject to change without notice.



Replaces Toro Greensmaster 3050 Parts

SPA Cutting Unit - Models 04472, 04473, 04482 & 04483
Reel & Bedknife



Item No	R&R Part No.	OEM Part No.	Description	Qty Req	Order Quantity
99	R453011	01-166-0100, 01-166-0120, 01-166-0270, 01-166-0500, 01-166-0600, 01-166-0620, 132-4593, 2356-3, 237-12, 24-10-AD, 24-11-AD, 24-11-BD, 24-12-AD, 24-12-BD, 30-9310, 32-8190, 3256-24, 3256-3, 3256-36, 3256-4, 453011, 47-9950, 48-9220, 513458, 7-0052	Washer - Flat 3/8 SAE Y/Zinc	2	

All original equipment manufacturers names and part numbers are used for identification purposes only, and we are in no way implying that our products are original equipment parts. Prices subject to change without notice.