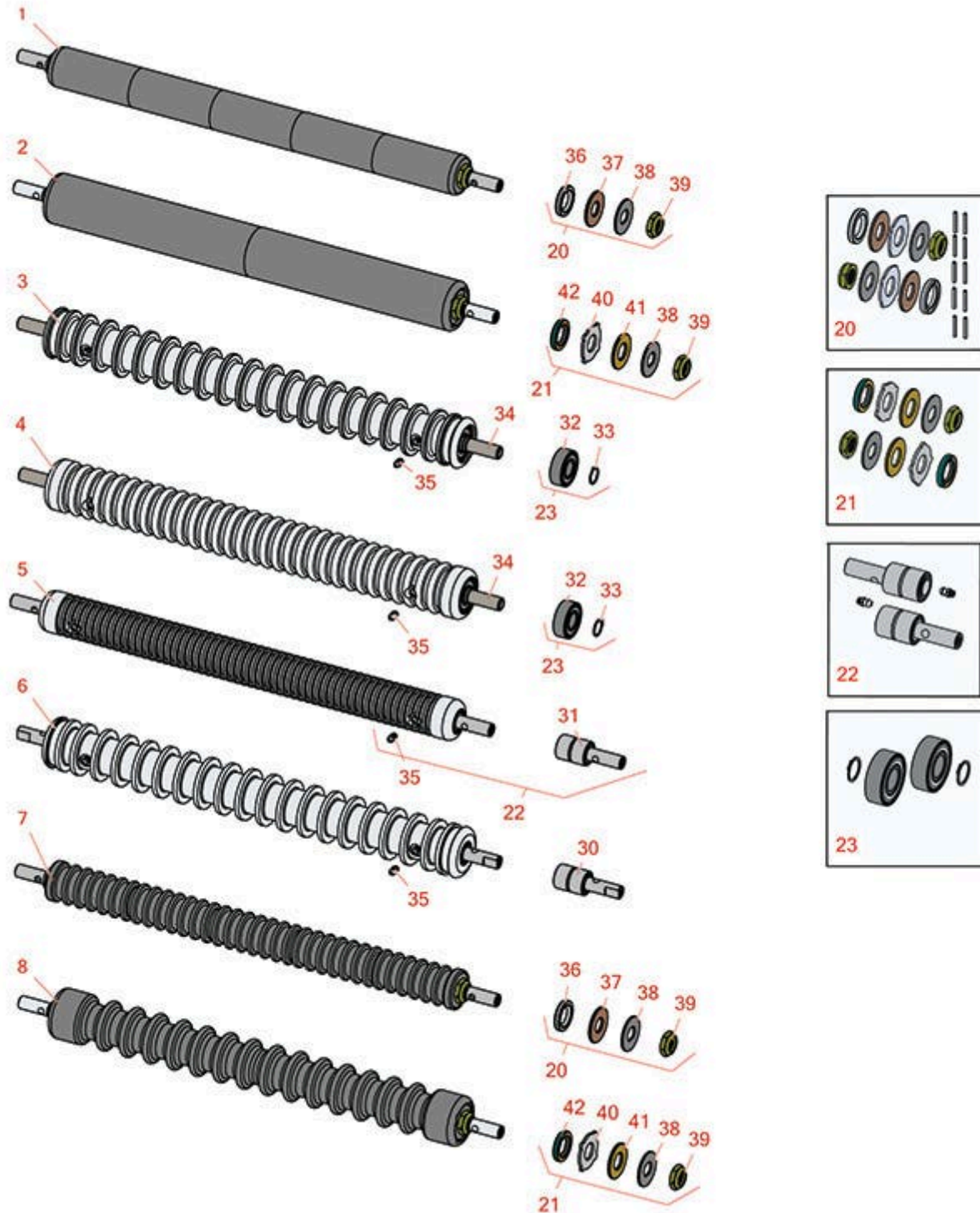




Replaces Toro Greensmaster 3050 Parts

SPA Cutting Unit - Models 04472, 04473, 04482 & 04483
Front Rollers



All original equipment manufacturers names and part numbers are used for identification purposes only, and we are in no way implying that our products are original equipment parts. Prices subject to change without notice.



Replaces Toro Greensmaster 3050 Parts

SPA Cutting Unit - Models 04472, 04473, 04482 & 04483
Front Rollers



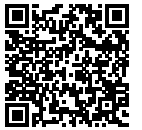
Item No	R&R Part No.	OEM Part No.	Description	Qty Req	Order Quantity
1	R150340		Roller - Smooth UHMW Polyethylene	0	
<i>Tech Note: Machined from solid UHMW, this low maintenance roller uses a 1" solid stainless steel shaft and requires no grease. UHMW material prevents build-up of debris.:</i>					
2	R1502600		Roller - Smooth UHMW Polyethylene	0	
<i>Tech Note: Machined from solid UHMW, this low maintenance roller uses a 1" solid stainless steel shaft and requires no grease. UHMW material prevents build-up of debris.:</i>					
3	R93-2469	93-2469	Roller - Grooved Machined Aluminum	0	
<i>Tech Note: Constructed with a through shaft and ball bearings, this roller is machined from aluminum and features 1-1/8" wide grooves.:</i>					
4	R99-4211	99-4211	Roller - Grooved Machined Aluminum	0	
<i>Tech Note: Constructed with a through shaft and ball bearings, this roller is machined from aluminum and features 5/8" wide grooves.:</i>					
5	R99-6241	99-6241	Roller - Grooved Machined Solid Aluminum	0	
<i>Tech Note: Machined from solid aluminum, this light weight roller uses greasable "water-pump" style bearings and features 3/8" wide grooves.:</i>					
6	R150735		Roller - Grooved Machined Aluminum	0	
<i>Tech Note: Machined from aluminum, this light weight roller uses greasable "water-pump" style bearings and features 3/4" wide grooves.:</i>					
7	R150335		Roller - Grooved UHMW Polyethylene	0	
<i>Tech Note: Machined from solid UHMW, this low maintenance roller rotates around a 1" solid stainless steel shaft and requires no bearings or grease. Patented groove design and smooth UHMW material prevents build-up of debris.:</i>					

All original equipment manufacturers names and part numbers are used for identification purposes only, and we are in no way implying that our products are original equipment parts. Prices subject to change without notice.



Replaces Toro Greensmaster 3050 Parts

SPA Cutting Unit - Models 04472, 04473, 04482 & 04483
Front Rollers



Item No	R&R Part No.	OEM Part No.	Description	Qty Req	Order Quantity
8	R1502650		Roller - Grooved UHMW Polyethylene	0	

Tech Note: Machined from solid UHMW, this low maintenance roller rotates around a 1" solid stainless steel shaft and requires no bearings or grease. Patented groove design and smooth UHMW material prevents build-up of debris.:

Overhaul Kits

20	R101395		Overhaul Kit - UHMW Roller	0	
----	----------------	--	----------------------------	---	--

Tech Note: Fits all R&R 2" Dia. Black UHMW Polyethylene Rollers. Includes 10 ea.: R150322 Roll Pins; 2 ea.: R3296-15 Locknuts, R150347T Teflon Seals, R150333 Thrust Washers, & R150334A Bronze Thrust Washers:

21	R101399		Overhaul Kit - UHMW 2 Pc Roller	1	
----	----------------	--	---------------------------------	---	--

Tech Note: Fits all R&R 2-1/2" - 3-1/2" Dia. Black UHMW Plastic Rollers that do not use ball bearings.. Includes 2 ea.: R1503230 Star Washers, R1503470 Seals, R150333 Thrust Washers, R3296-15 Locknuts, R1503471 Bronze Thrust Washers:

22	R107-1588	107-1588	Overhaul Kit - Roller	0	
----	------------------	----------	-----------------------	---	--

Tech Note: Includes 2 ea.: R302-5 Grease Fittings & R52-3180 Bearings:

23	R107-1591	107-1591	Overhaul Kit - Roller	0	
----	------------------	----------	-----------------------	---	--

Tech Note: Includes 2 ea: R458013 Retaining Rings & R93-2559 Bearings:

Other Parts Available

30	R52-3210	52-3210	Bearing - w/Milled Flat	2	
31	R52-3180	21-6410, 52-3180	Bearing - Front Roller	2	
32	R93-2559	93-2559	Bearing	2	
33	R458013	30-0580, 32120-72, 458013, 93-2525, 936125	Ring - Retaining	2	

All original equipment manufacturers names and part numbers are used for identification purposes only, and we are in no way implying that our products are original equipment parts. Prices subject to change without notice.



Replaces Toro Greensmaster 3050 Parts

SPA Cutting Unit - Models 04472, 04473, 04482 & 04483
Front Rollers



Item No	R&R Part No.	OEM Part No.	Description	Qty Req	Order Quantity
34	R93-2470	93-2470	Shaft - Fits Grooved Roller	1	
35	R302-5	21-6010, 302-11, 302-37, 302-47, 302-5, 302-57, 302-58, 302-6, 31-0300, 32-9660, 60-0800, 62-3880, 92-4181	Fitting - Grease	4	
36	R150347T		Seal - Nonstick Lip	2	
37	R150334A		Washer - Thrust SAE660 Bronze	2	
38	R150333		Washer - Flat Keyed Outer SS	2	
39	R3296-15	116-7306, 32118-5, 32127-23, 32127-47, 3296-15	Locknut - 3/4-16 Nylon Jam	2	
40	R1503230		Washer - Thrust Outer Keyed	2	
41	R1503471		Washer - Thrust SAE660 Bronze	2	
42	R1503470		Seal - Inner Wiper	2	

All original equipment manufacturers names and part numbers are used for identification purposes only, and we are in no way implying that our products are original equipment parts. Prices subject to change without notice.