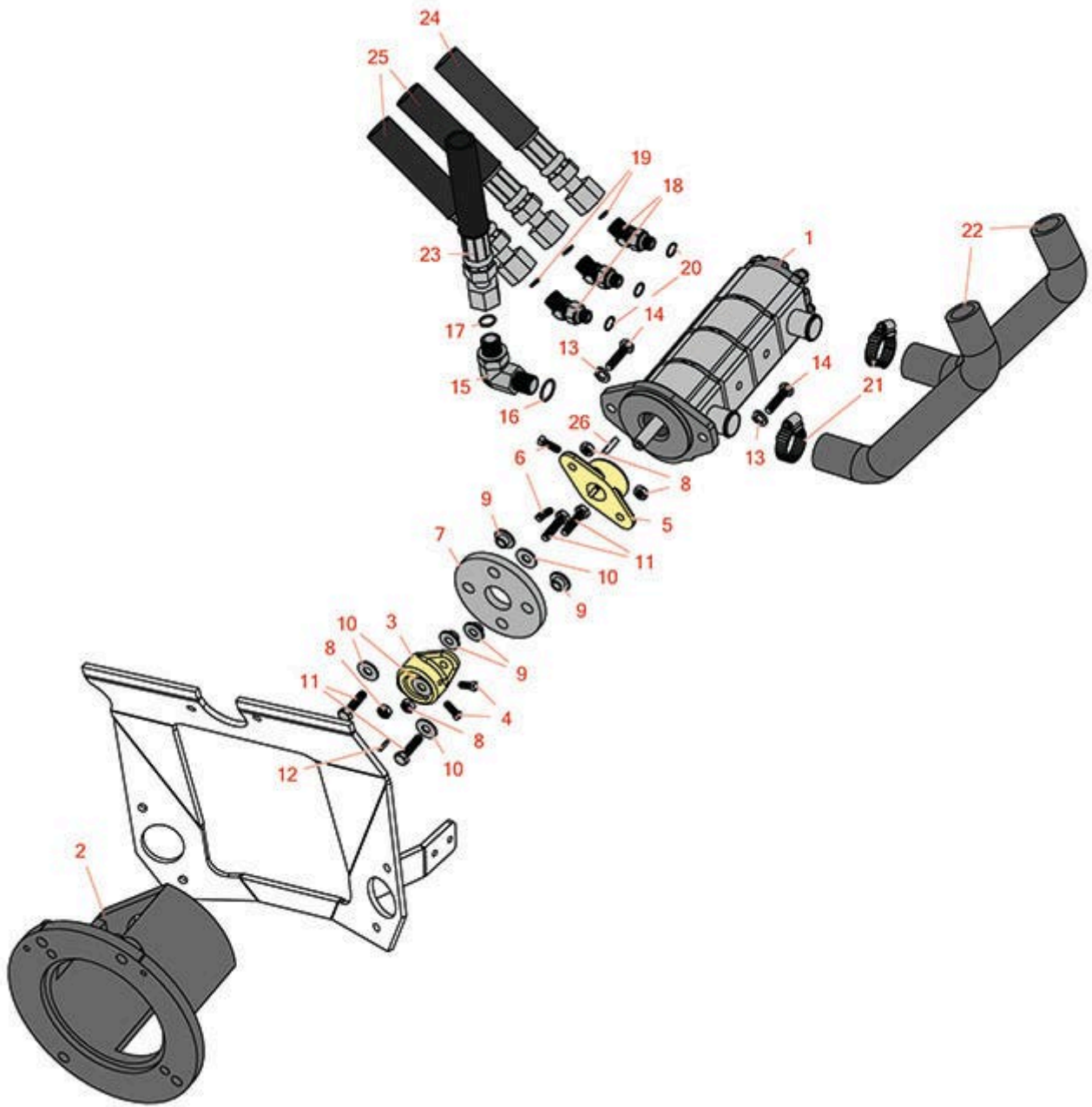
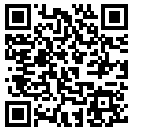




# Replaces Toro Greensmaster 3050 Parts

Traction Unit - Model 04351

Hydraulic Gear Pump



All original equipment manufacturers names and part numbers are used for identification purposes only, and we are in no way implying that our products are original equipment parts. Prices subject to change without notice.



# Replaces Toro Greensmaster 3050 Parts

*Traction Unit - Model 04351*

*Hydraulic Gear Pump*



Item No	R&R Part No.	OEM Part No.	Description	Qty Req	Order Quantity
1	<b>R107-2565</b>	107-2565, 107-2565-03	Gear Pump - 4 Section	1	
2	<b>R83-1060-03</b>	83-1060, 83-1060-03	Adapter - Pump	1	
3	<b>R27-1960</b>	110-5236, 27-1960	Hub - Engine	1	
4	<b>R3241-2</b>	01-163-0100, 31-6770, 3241-1, 3241-2	Screw - Set Sq.HD. 1/4 x 5/8	2	
5	<b>R27-1970</b>	27-1970	Hub - Pump	1	
6	<b>R3241-6</b>	3241-6	Screw - Set Sq. HD. 1/4 x3/4	2	
7	<b>R44-2230</b>	115-4523, 27-6560, 44-2230, 80-8650	Coupling - Rubber - Pump	1	
8	<b>R3296-29</b>	1-804256, 3290-357, 3296-29, 915662P	Locknut - 5/16-18 ESNA	4	
9	<b>R27-6600</b>	27-6600	Spacer - Pump Coupling	4	
10	<b>R453009</b>	01-166-0400, 24-10-BD, 24-9-AD, 32-9650, 3256-2, 3256-23, 3256-3, 3256-67, 3290-217, 3556-3, 4-2390, 7-0152	Washer - Flat 5/16 SAE	4	

All original equipment manufacturers names and part numbers are used for identification purposes only, and we are in no way implying that our products are original equipment parts. Prices subject to change without notice.



# Replaces Toro Greensmaster 3050 Parts

*Traction Unit - Model 04351*

*Hydraulic Gear Pump*



Item No	R&R Part No.	OEM Part No.	Description	Qty Req	Order Quantity
11	<b>R400190</b>	01-150-0720, 01-178-0510, 30-8680, 322-6, 513343	Bolt - Hex HD 5/16-18 x 1-1/4 GR5	4	
12	<b>R1164</b>	10-7070, 48-004-1931, 62-3380, 66-004-3221, 85-9020	Key - 1/4 x 1/4 x 1	2	
13	<b>R3253-21</b>	215-51, 30-8470, 3253-21, Jul-12	Washer - Lock 3/8	2	
14	<b>R400264</b>	01-150-0180, 01-178-0610, 20-48-AD, 20-48-AGD, 32-9160, 3224-3, 323-29, 323-7, 400264, 908035P	Bolt - Hex HD 3/8-16 x 1-1/4	2	
15	<b>R340-105</b>	340-105	Hydraulic Fitting	1	
16	<b>R237-80</b>	237-80, 327-80	O-Ring	1	
17	<b>R237-30</b>	23-6320, 237-30	O-Ring - Seal	1	
18	<b>R340-87</b>	340-106, 340-87	Hydraulic Fitting	3	
19	<b>R237-22</b>	107-8844, 237-22, 237-78	O-Ring	3	
20	<b>R237-42</b>	237-42, 31-4160	O-Ring	3	

All original equipment manufacturers names and part numbers are used for identification purposes only, and we are in no way implying that our products are original equipment parts. Prices subject to change without notice.



# Replaces Toro Greensmaster 3050 Parts

*Traction Unit - Model 04351*

*Hydraulic Gear Pump*



Item No	R&R Part No.	OEM Part No.	Description	Qty Req	Order Quantity
21	<b>R2412-34</b>	2412-34, 31-0120	Clamp - Hose .75-1.5	1	
22	<b>R83-0910</b>	83-0910	Hose - Outside Inlet - Pump	2	
22	<b>R95-5966</b>	95-5966	Hose - Inlet - Pump - Metal Tank	2	
23	<b>R112-0205</b>	112-0205	Hydraulic Hose Assy - LH Drive Motor	1	
24	<b>R98-2150</b>	98-2150	Hydraulic Hose Assy - Valve to Pump	1	
25	<b>R98-0649</b>	98-0649	Hydraulic Hose Assy - Valve to Pump	2	
26	<b>R5-0946</b>	5-0946	Key - 3/16 x 3/16 x 1-1/8	1	

All original equipment manufacturers names and part numbers are used for identification purposes only, and we are in no way implying that our products are original equipment parts. Prices subject to change without notice.