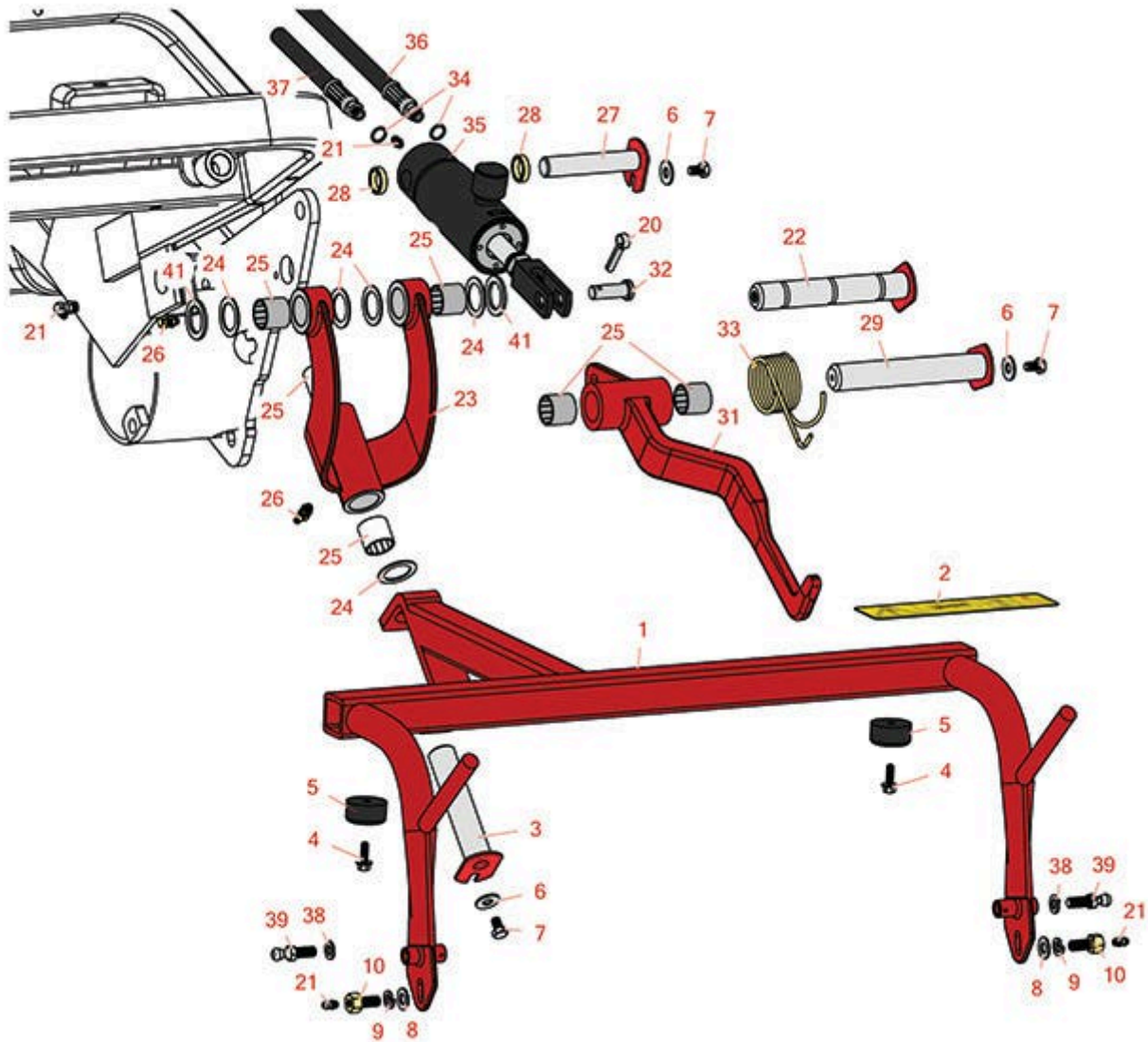
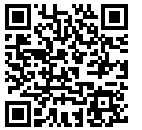




Replaces Toro Greensmaster 3050 Parts

Traction Unit - Model 04351

Left Hand Pull Frame



All original equipment manufacturers names and part numbers are used for identification purposes only, and we are in no way implying that our products are original equipment parts. Prices subject to change without notice.



Replaces Toro Greensmaster 3050 Parts

Traction Unit - Model 04351

Left Hand Pull Frame



Item No	R&R Part No.	OEM Part No.	Description	Qty Req	Order Quantity
1	R112-0283	108-8632, 112-0283, 117-9542	Frame - Pull LH	1	
<i>Tech Note: 2006 & Newer:</i>					
1	R86-9810	104-2054, 104-2064, 86-9810, 86-9810-01, 92-9176, 92-9176-01, Oct-10	Frame - Pull LH	1	
<i>Tech Note: 1997-2005:</i>					
2	R93-8064	93-8064	Decal - Warning	1	
2	R93-6688	93-6688	Decal - Warning	1	
3	R10-6090	10-6090	Pin - Pivot 4 7/8 Long	1	
4	R49-2040	32104-42, 32104-95, 32144-44, 49-2040	Bolt - Hex Washer 1/4-20 x 3/4	2	
5	R94-4548	94-4548	Rubber Bumper	2	
6	R453009	01-166-0400, 24-10-BD, 24-9-AD, 32-9650, 3256-2, 3256-23, 3256-3, 3256-67, 3290-217, 3556-3, 4-2390, 7-0152	Washer - Flat 5/16 SAE	3	

All original equipment manufacturers names and part numbers are used for identification purposes only, and we are in no way implying that our products are original equipment parts. Prices subject to change without notice.



Replaces Toro Greensmaster 3050 Parts

Traction Unit - Model 04351

Left Hand Pull Frame



Item No	R&R Part No.	OEM Part No.	Description	Qty Req	Order Quantity
7	R322-1	01-178-0504, 20-22-AD, 20-22-AGD, 322-1, 513337	Bolt - Hex HD 5/16-18 x 1/2	3	
8	R453011	01-166-0100, 01-166-0120, 01-166-0270, 01-166-0500, 01-166-0600, 01-166-0620, 132-4593, 2356-3, 237-12, 24-10-AD, 24-11-AD, 24-11-BD, 24-12-AD, 24-12-BD, 30-9310, 32-8190, 3256-24, 3256-3, 3256-36, 3256-4, 453011, 47-9950, 48-9220, 513458, 7-0052	Washer - Flat 3/8 SAE Y/Zinc	2	
9	R3253-21	215-51, 30-8470, 3253-21, Jul-12	Washer - Lock 3/8	2	
10	R11-0160	11-0160	Screw - Roller Shaft	2	
20	R3272-11	01-151-0010, 01-151-0040, 28-18-D, 28-28-D, 3211-72, 3272-11	Pin - Cotter	1	

All original equipment manufacturers names and part numbers are used for identification purposes only, and we are in no way implying that our products are original equipment parts. Prices subject to change without notice.



Replaces Toro Greensmaster 3050 Parts

Traction Unit - Model 04351

Left Hand Pull Frame



Item No	R&R Part No.	OEM Part No.	Description	Qty Req	Order Quantity
21	R323016	302-33, 323016	Zerk - Grease	1	
22	R114-4683	114-4683	Pin - Hinge 6-1/4 Long	1	
23	R10-7820	10-7820	Pivot Hinge Assy	1	
24	R10-8110	10-8110	Washer - Pivot Pin	6	
25	R3-0348	3-0348	Bushing	6	
26	R302-60	302-60	Zerk - Grease 90 Deg.	2	
27	R10-6060	10-6060, 120-3199	Pin - Pivot 3-7/8 Long	1	
28	R105-3828	105-3828	Spacer - Lift Cyl	1	
29	R10-6110	10-6110	Pin - Hinge 6 1/4 Long	1	
31	R107-2598	107-2598	Lift Arm Assy - LH	1	
<i>Tech Note: 2004 & Newer:</i>					
32	R283-8	17-3670, 283-8, Jul-35	Clevis Pin - 1/2 x 1-27/64	1	
33	R110-3952	106-9079, 110-3952	Spring - Torsion - LH	1	
<i>Tech Note: 2004 & Newer:</i>					
34	R237-22	107-8844, 237-22, 237-78	O-Ring	1	
35	R106-9066	106-9066	Hydraulic Cylinder - LH / RH	1	
35	R107-2564	107-2564	Seal Kit - Fits 107-1981 Hyd Cyl	1	
36	R83-1690	83-1690	Hydraulic Hose Assy - Front LH Cylinder	1	
37	R63-3850	63-3850	Hose - Cyl LH Drop Fits	1	

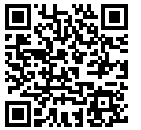
All original equipment manufacturers names and part numbers are used for identification purposes only, and we are in no way implying that our products are original equipment parts. Prices subject to change without notice.



Replaces Toro Greensmaster 3050 Parts

Traction Unit - Model 04351

Left Hand Pull Frame



Item No	R&R Part No.	OEM Part No.	Description	Qty Req	Order Quantity
38	R3254-6	01-166-0010, 01-166-0280, 01-166-0610, 3253-5, 3254-18, 3254-6, 3290-223, 48-9370	Washer - Lock 3/8	2	
39	R94-2958	94-2958	Stud - Alloy Ball Joint	2	
41	R5-1226	5-1226	Spacer	2	

All original equipment manufacturers names and part numbers are used for identification purposes only, and we are in no way implying that our products are original equipment parts. Prices subject to change without notice.