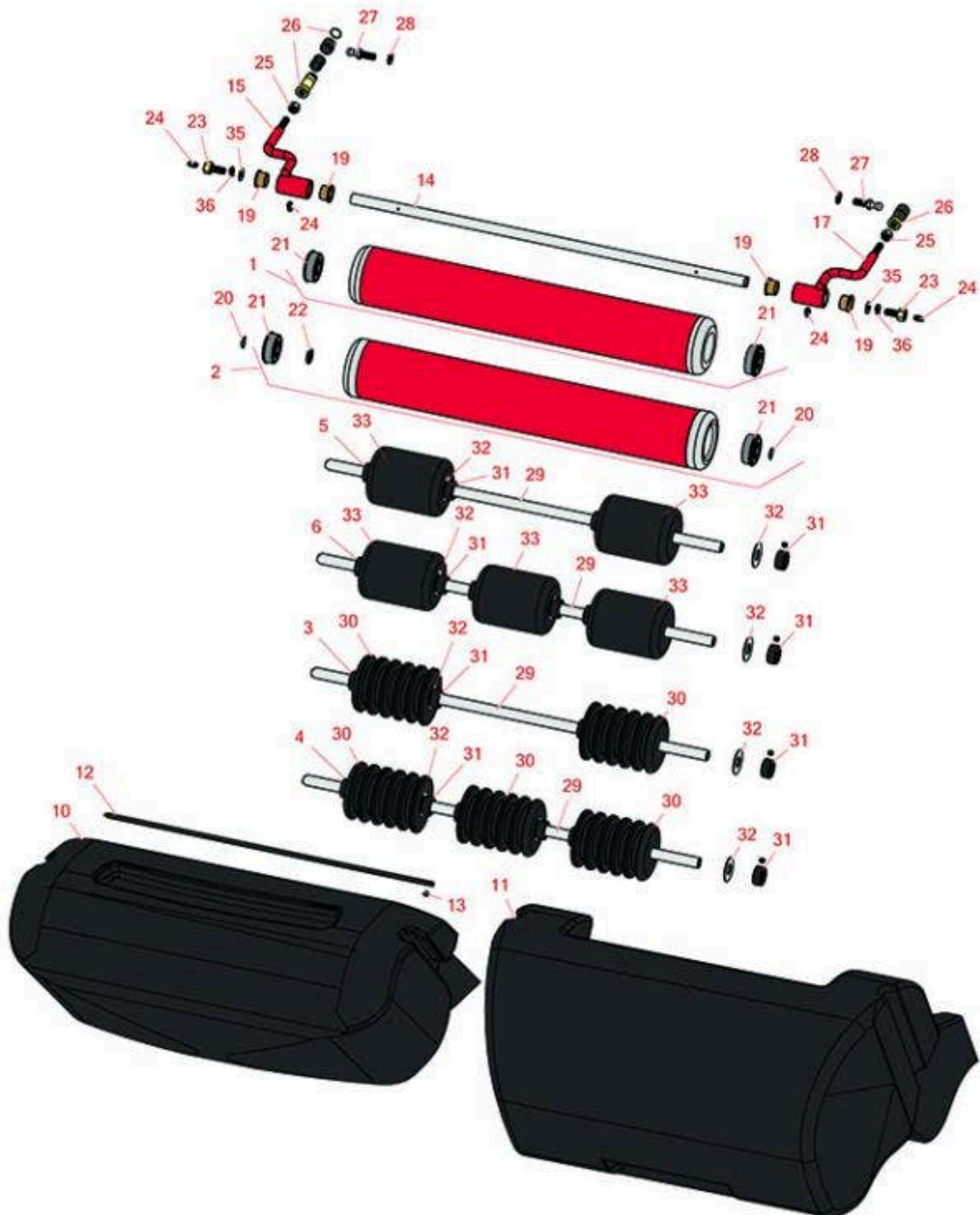




Replaces Toro Greensmaster 3050 Parts

Traction Unit - Model 04351

Pull Frame, Roller & Basket



All original equipment manufacturers names and part numbers are used for identification purposes only, and we are in no way implying that our products are original equipment parts. Prices subject to change without notice.



Replaces Toro Greensmaster 3050 Parts

Traction Unit - Model 04351

Pull Frame, Roller & Basket



Item No	R&R Part No.	OEM Part No.	Description	Qty Req	Order Quantity
---------	--------------	--------------	-------------	---------	----------------

Pull Frame Basket Rollers

1	R52-2720	52-2720	Roller - w/ Bearings	1	
<i>Tech Note: Fits up to 2000:</i>					
2	R99-4277	99-4277	Basket Roller	1	
<i>Tech Note: Fits 2000 & Newer:</i>					
3	R150325		Basket Roller - Grooved UHMW Polyethylene 2 Section	1	
4	R150329		Basket Roller - Grooved UHMW Polyethylene 3 Section	1	
5	R150330		Basket Roller - Smooth UHMW Polyethylene 2 Section	1	
6	R150332		Roller - Smooth UHMW Polyethylene 3-1/2 3 Sec	1	

Other Parts Available

10	R108-8642	108-8642	Grass Basket w/Bkt	1	
11	R36-7250	22-7070, 36-7250, 37-8130, Oct-30	Grass Basket	1	
12	R104-2607	104-2607	Strip - Reinforcing Grass Basket	1	
13	R3290-382	3269-15, 3290-382	Rivet - 5/32 x 1/2 Pop Rivet	8	
14	R21-8470	21-8470	Shaft - Roller	1	
15	R92-0585	92-0585	Arm - Pull RH - w/Bushings	1	
15	R52-2750	52-2750	Arm - Pull RH w/Bushings	1	
17	R92-0586	92-0586, 95-0586	Arm - Pull LH w/Bushings	1	
17	R52-2740	52-2740	Arm - Pull LH w/Bushings	1	

All original equipment manufacturers names and part numbers are used for identification purposes only, and we are in no way implying that our products are original equipment parts. Prices subject to change without notice.



Replaces Toro Greensmaster 3050 Parts

Traction Unit - Model 04351

Pull Frame, Roller & Basket



Item No	R&R Part No.	OEM Part No.	Description	Qty Req	Order Quantity
19	R3-1506	3-1506, 75-2160, Apr-50	Bushing - Bronze	4	
20	R3290-317	3290-317	Washer - Wave	2	
21	R251-141	251-141	Bearing - Roller	2	
22	R253-83	253-83	Seal - Oil 7/8 OD x 5/8 ID	2	
23	R11-0160	11-0160	Screw - Roller Shaft	2	
24	R302-5	21-6010, 302-11, 302-37, 302-47, 302-5, 302-57, 302-58, 302-6, 31-0300, 32-9660, 60-0800, 62-3880, 92-4181	Fitting - Grease	4	
25	R3220-3	01-191-0624, 3220-3, 3290-149	Nut - Jam Ball Joint	2	
26	R99-1460	2411-28, 2411-29, 2411-30, 2411-8, 8-7710, 94-2959, 99-1460	Receiver - Ball Joint	2	
27	R94-2958	94-2958	Stud - Alloy Ball Joint	2	

All original equipment manufacturers names and part numbers are used for identification purposes only, and we are in no way implying that our products are original equipment parts. Prices subject to change without notice.



Replaces Toro Greensmaster 3050 Parts

Traction Unit - Model 04351

Pull Frame, Roller & Basket



Item No	R&R Part No.	OEM Part No.	Description	Qty Req	Order Quantity
28	R3254-6	01-166-0010, 01-166-0280, 01-166-0610, 3253-5, 3254-18, 3254-6, 3290-223, 48-9370	Washer - Lock 3/8	2	
29	R150326		Shaft - Stainless Roller	1	
30	R150327		Roller Section - 3.5 UHMW Grooved	2	
31	R150328	94-9213	Collar - Retaining 5/8	4	
32	R302295		Washer	4	
33	R150331		Section - 3-1/2 UHMW Smooth	2	
35	R453011	01-166-0100, 01-166-0120, 01-166-0270, 01-166-0500, 01-166-0600, 01-166-0620, 132-4593, 2356-3, 237-12, 24-10-AD, 24-11-AD, 24-11-BD, 24-12-AD, 24-12-BD, 30-9310, 32-8190, 3256-24, 3256-3, 3256-36, 3256-4, 453011, 47-9950, 48-9220, 513458, 7-0052	Washer - Flat 3/8 SAE Y/Zinc	2	

All original equipment manufacturers names and part numbers are used for identification purposes only, and we are in no way implying that our products are original equipment parts. Prices subject to change without notice.



Replaces Toro Greensmaster 3050 Parts

Traction Unit - Model 04351

Pull Frame, Roller & Basket



Item No	R&R Part No.	OEM Part No.	Description	Qty Req	Order Quantity
36	R3253-21	215-51, 30-8470, 3253-21, Jul-12	Washer - Lock 3/8	2	

All original equipment manufacturers names and part numbers are used for identification purposes only, and we are in no way implying that our products are original equipment parts. Prices subject to change without notice.