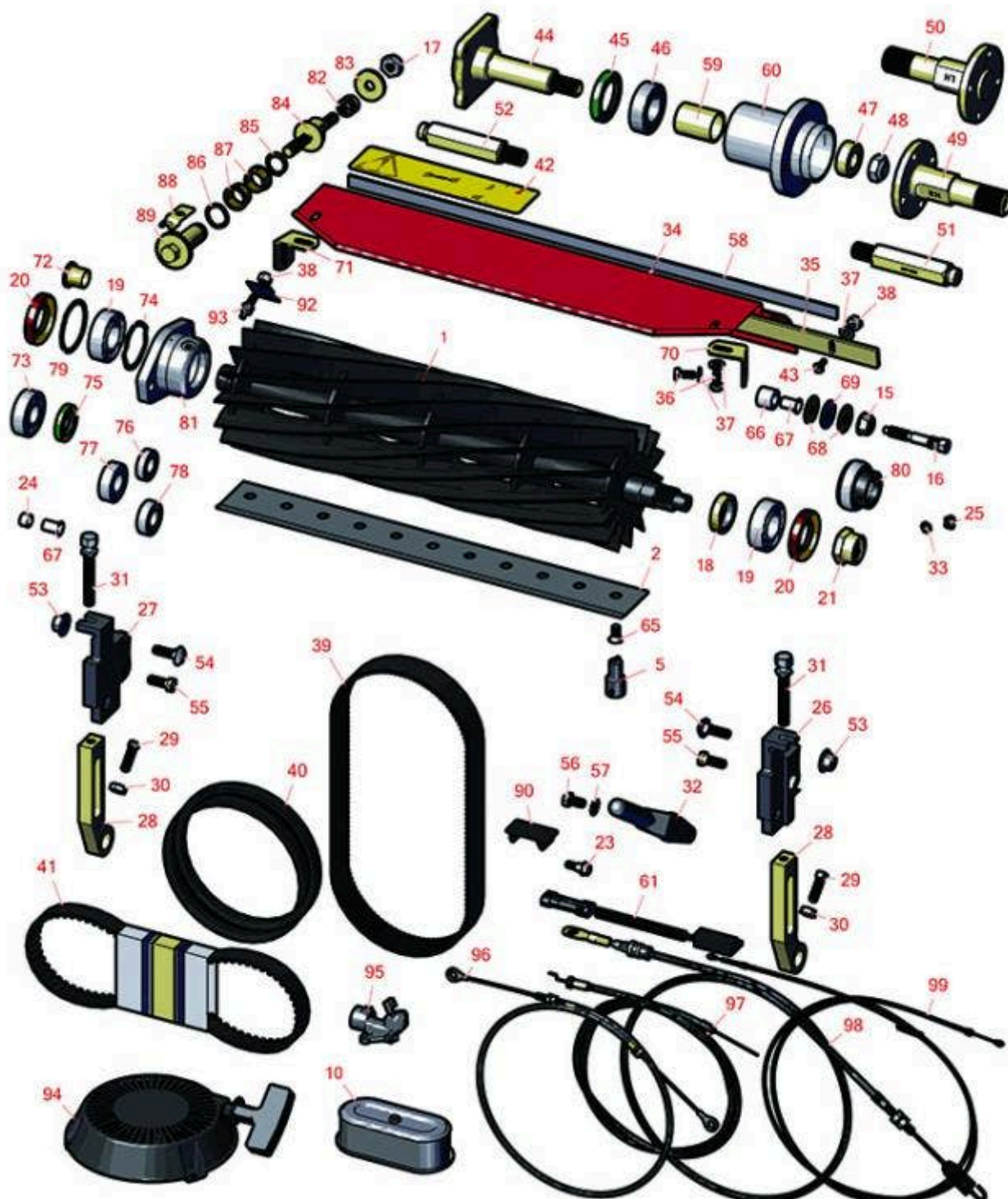




# Replaces Toro Greensmaster 800 Parts

Mower - Model 04054

Reel & Bedknife



All original equipment manufacturers names and part numbers are used for identification purposes only, and we are in no way implying that our products are original equipment parts. Prices subject to change without notice.



# Replaces Toro Greensmaster 800 Parts

Mower - Model 04054

Reel & Bedknife



Item No	R&R Part No.	OEM Part No.	Description	Qty Req	Order Quantity
---------	--------------	--------------	-------------	---------	----------------

## R&R Reels, Lifetime Guaranteed

1	<b>R98-5919</b>	98-5919	Reel - 11 Blade	1
---	-----------------	---------	-----------------	---

*Detail Description: R&R Reel blades are expertly crafted from premium high carbon-boron alloy steel, heat-treated to perfectly complement both R&R and OEM bedknives. Each reel undergoes precision cylindrical grinding on bearing surfaces, followed by relief grinding for optimal performance. Advanced computer balancing ensures extended reel and bearing life. Backed by our lifetime guarantee against defects in materials and craftsmanship under normal use, R&R Reels deliver unmatched durability and cutting precision you can trust.:*

1	<b>R150750</b>	120-2729	Reel - 14 Blade	1
---	----------------	----------	-----------------	---

*Detail Description: R&R Reel blades are expertly crafted from premium high carbon-boron alloy steel, heat-treated to perfectly complement both R&R and OEM bedknives. Each reel undergoes precision cylindrical grinding on bearing surfaces, followed by relief grinding for optimal performance. Advanced computer balancing ensures extended reel and bearing life. Backed by our lifetime guarantee against defects in materials and craftsmanship under normal use, R&R Reels deliver unmatched durability and cutting precision you can trust.:*

1	<b>R127-2160</b>	127-2160	Reel - 11 Blade	1
---	------------------	----------	-----------------	---

*Detail Description: R&R Reel blades are manufactured from high carbon-boron alloy steel and then hardened to RC46-49 to match the temper of our bedknives and original equipment bedknives. All R&R Reels are cylindrically ground on bearing surfaces and then relief ground. Reels are then precision computer balanced for extended bearing and reel life. R&R Products Reels are guaranteed against defects in material and workmanship for the life of the reel under normal use.:*

## R&R Bedknives, Lifetime Guaranteed

2	<b>R98-7260</b>	98-7260, 98-7260-05	Bedknife - Tournament .125 - .500 HOC	1
---	-----------------	------------------------	--	---

*Detail Description: R&R Bedknives are manufactured from high carbon-boron alloy steel and then hardened to RC46-49 to match the temper of our reel blades and original equipment reels. Bedknives are surface ground on the top and front edge and straightened three times before being packaged with oil for rust prevention. All R&R Bedknives now have an increased front edge grind for added life. All R&R Bedknives are guaranteed against defects in material and workmanship under normal use for the life of the part.:*

2	<b>R98-7261</b>	98-7261	Bedknife - Micro Cut .062 - .187 HOC	1
---	-----------------	---------	---	---

All original equipment manufacturers names and part numbers are used for identification purposes only, and we are in no way implying that our products are original equipment parts. Prices subject to change without notice.



# Replaces Toro Greensmaster 800 Parts

Mower - Model 04054

Reel & Bedknife



Item No	R&R Part No.	OEM Part No.	Description	Qty Req	Order Quantity
---------	--------------	--------------	-------------	---------	----------------

*Detail Description:* R&R Bedknives are manufactured from high carbon-boron alloy steel and then hardened to RC46-49 to match the temper of our reel blades and original equipment reels. Bedknives are surface ground on the top and front edge and straightened three times before being packaged with oil for rust prevention. All R&R Bedknives now have an increased front edge grind for added life. All R&R Bedknives are guaranteed against defects in material and workmanship under normal use for the life of the part.:

2	<b>R110-2300</b>	110-2300	Bedknife - Micro Cut Extended .062 - .187 HOC	1	
---	------------------	----------	--	---	--

*Detail Description:* R&R Bedknives are manufactured from high carbon-boron alloy steel and then hardened to RC46-49 to match the temper of our reel blades and original equipment reels. Bedknives are surface ground on the top and front edge and straightened three times before being packaged with oil for rust prevention. All R&R Bedknives now have an increased front edge grind for added life. All R&R Bedknives are guaranteed against defects in material and workmanship under normal use for the life of the part.:

2	<b>R110-2301</b>	110-2301	Bedknife - Low Cut .187 - 1.00 HOC	1	
---	------------------	----------	---------------------------------------	---	--

*Detail Description:* R&R Bedknives are manufactured from high carbon-boron alloy steel and then hardened to RC46-49 to match the temper of our reel blades and original equipment reels. Bedknives are surface ground on the top and front edge and straightened three times before being packaged with oil for rust prevention. All R&R Bedknives now have an increased front edge grind for added life. All R&R Bedknives are guaranteed against defects in material and workmanship under normal use for the life of the part.:

## R&R Razor Tool Steel Bedknives

2	<b>R117-1530</b>	117-1530	Bedknife - Razor Tool Steel - 18 Micro Cut .062 - .187 HOC	1	
---	------------------	----------	---	---	--

*Detail Description:* R&R Razor bedknives are manufactured from premium alloy tool steel steel and then hardened to RC48-51 to match the temper of our Razor reel blades and original equipment premium series reels. Bedknives are surface ground on the top and front edge and specially packaged for rust prevention. All R&R Bedknives now have an increased front edge grind for added life. All R&R Bedknives are guaranteed against defects in material and workmanship under normal use for the life of the part. You can expect up to double the life over standard bedknives.:

2	<b>R117-1532</b>	117-1532	Bedknife - Razor Tool Steel - Tournament .125 - .500 HOC	1	
---	------------------	----------	---	---	--

All original equipment manufacturers names and part numbers are used for identification purposes only, and we are in no way implying that our products are original equipment parts. Prices subject to change without notice.



# Replaces Toro Greensmaster 800 Parts

Mower - Model 04054

Reel & Bedknife



Item No	R&R Part No.	OEM Part No.	Description	Qty Req	Order Quantity
---------	--------------	--------------	-------------	---------	----------------

*Detail Description: R&R Razor bedknives are manufactured from premium alloy tool steel steel and then hardened to RC48-51 to match the temper of our Razor reel blades and original equipment premium series reels. Bedknives are surface ground on the top and front edge and specially packaged for rust prevention. All R&R Bedknives now have an increased front edge grind for added life. All R&R Bedknives are guaranteed against defects in material and workmanship under normal use for the life of the part. You can expect up to double the life over standard bedknives.:*

## Overhaul Kits & Service Tools

5	<b>R51-0880</b>	51-0880	Bedknife Screw Driver Tool	1	
---	-----------------	---------	----------------------------	---	--

*Detail Description: Easily install and remove bed knife screws with the help of a ratchet with 3/8" drive. Tool manufactured with hardened alloy steel.:*

## Filters

10	<b>RRF10204</b>	121-0618	SilverGuard Air Filter - Inner	1	
----	-----------------	----------	--------------------------------	---	--

## Other Parts Available

15	<b>R3296-28</b>	119-4154, 140-9234, 32127-34, 32128-7, 32128-8, 32136-7, 3296-28	Nut - 1/2-20 ESNA Jam	2	
16	<b>R117-9493</b>	117-9493	Bolt - Bed Bar - Hardened	2	
17	<b>R3296-48</b>	119-4039, 32146-7, 3296-34, 3296-48	Locknut - 7/16-14 ESNA	2	
17	<b>R33025-00</b>	32025-00, 33025-00	Locknut - 10mm x 1.5 Jam	2	
18	<b>R253-96</b>	253-96	Seal - Oil Single Lip Reel	2	
19	<b>R251-342</b>	251-342	Bearing - Reel	2	
20	<b>R253-163</b>	253-163	Seal - Reel	2	

All original equipment manufacturers names and part numbers are used for identification purposes only, and we are in no way implying that our products are original equipment parts. Prices subject to change without notice.



## Replaces Toro Greensmaster 800 Parts

Mower - Model 04054

Reel & Bedknife



Item No	R&R Part No.	OEM Part No.	Description	Qty Req	Order Quantity
21	<b>R92-7302</b>	65-8240, 86-7160, 92-7302	Locknut - Reel	1	
23	<b>R42-3560</b>	42-3560	Bolt-Shoulder	1	
24	<b>R65-7910</b>	65-7910	Spacer - Latch	2	
25	<b>R170714</b>	302-34, 302-39, 62-3520	Fitting - Pressure Relief	2	
26	<b>R93-6049</b>	93-6049	Bracket - HOC LH	1	
27	<b>R93-6048</b>	93-6048	Bracket - HOC RH	1	
28	<b>R93-6090</b>	93-6090	Arm - Roller HOC	2	
29	<b>R3242-4</b>	3242-4	Screw - Set Sq HD 5/16-18 x 1	2	
30	<b>R443106</b>	01-188-0518, 22-12-AJD, 32111-4, 3217-4, 3217-6, 3218-2, 513295, 513412, 915112P, 915978, 915979	Nut - 5/16-18 Y/Zinc Plated	2	
31	<b>R93-6051</b>	93-6051	Bolt - HOC	2	
32	<b>R65-8570</b>	65-7250, 65-8570	Rod - Mounting Grass Basket	2	

All original equipment manufacturers names and part numbers are used for identification purposes only, and we are in no way implying that our products are original equipment parts. Prices subject to change without notice.



## Replaces Toro Greensmaster 800 Parts

Mower - Model 04054

Reel & Bedknife



Item No	R&R Part No.	OEM Part No.	Description	Qty Req	Order Quantity
33	R302-5	21-6010, 302-11, 302-37, 302-47, 302-5, 302-57, 302-58, 302-6, 31-0300, 32-9660, 60-0800, 62-3880, 92-4181	Fitting - Grease	2	
34	R98-5918	98-5918, 98-5944-01	Shield - Grass	1	
35	R98-5933	98-5933	Bar - Cut Off Grass Shield	1	
36	R400106	321-3, 513315, 908002P	Bolt - Hex HD 1/4-20 x 5/8	4	
37	R3256-22	24-9-BD, 3-1032, 3256-1, 3256-22, 93-0954, 93-0989	Washer - Flat 1/4 Yellow	6	
38	R301504	2296-42, 301504, 32127-24, 32128-33, 32146-17, 3296-16, 3296-42, 3296-42 , 915661P	Locknut - ESNA 1/4-20	4	
39	R65-9080	65-9080	Belt - Countershaft	1	
39	R150525	65-6200	Belt - Reel Drive	1	
40	R92-9218	92-9218	Belt - Engine Set of 2	1	

All original equipment manufacturers names and part numbers are used for identification purposes only, and we are in no way implying that our products are original equipment parts. Prices subject to change without notice.





# Replaces Toro Greensmaster 800 Parts

Mower - Model 04054

Reel & Bedknife



Item No	R&R Part No.	OEM Part No.	Description	Qty Req	Order Quantity
41	<b>R150527</b>	65-6210	Belt - Drum Drive	2	
42	<b>R93-8064</b>	93-8064	Decal - Warning	1	
43	<b>R32144-73</b>	104-2065, 32144-73	Screw - Machine Hex Washer Head	5	
44	<b>R94-5850</b>	94-5850	Spindle - Rear Roller Drum	1	
45	<b>R253-159</b>	253-159	Seal - Drum	2	
46	<b>RA203605</b>	251-82, 6610	Bearing	2	
47	<b>R65-6530</b>	65-6530	Spacer - Seal	1	
48	<b>R3296-33</b>	3296-33	Locknut - 5/8-18 ESNA Jam	1	
49	<b>R88-7510</b>	88-7510	Shaft - Extension RH Drum	1	
<i>Tech Note: Ser# 312000001-314999999:</i>					
49	<b>R132-3841</b>	132-3841	Shaft- Drum Extension - RH	1	
<i>Tech Note: Ser# 316000116-403418000:</i>					
50	<b>R88-7520</b>	88-7520	Shaft - Extension LH Drum	1	
<i>Tech Note: Ser# 312000001-314999999:</i>					
50	<b>R132-3842</b>	132-3842	Shaft- Drum Extension - LH	1	
<i>Tech Note: Ser# 316000116-403418000:</i>					
51	<b>R88-7580</b>	88-7580	Shaft - Transport Wheel LH	1	
52	<b>R88-7590</b>	88-7590	Shaft - Transport Wheel RH	1	
53	<b>R32128-21</b>	32128-21	Locknut - Flanged 3/8-16 Whiz Top Lock	2	
54	<b>R3231-5</b>	3231-5	Bolt - Carriage 3/8-16 x 1-3/4	2	

All original equipment manufacturers names and part numbers are used for identification purposes only, and we are in no way implying that our products are original equipment parts. Prices subject to change without notice.



## Replaces Toro Greensmaster 800 Parts

Mower - Model 04054

Reel & Bedknife



Item No	R&R Part No.	OEM Part No.	Description	Qty Req	Order Quantity
55	<b>R92-8914</b>	3231-5, 65-8530, 92-8914	Bolt - Tapered Face 5/16-18 x 7/8	4	
56	<b>R322-2</b>	322-2, 513338P	Bolt - Hex HD 5/16-18 x 5/8	4	
57	<b>R3255-8</b>	3255-8	Washer - Lock 5/16 Ext	4	
58	<b>R106-2619</b>	106-2619	Seal - Strip	1	
59	<b>R65-6520</b>	65-6520	Spacer	1	
60	<b>R132-6971</b>	132-6971, 94-5852	Hub-Drum	1	
61	<b>R100-1270</b>	100-1270	Sensor - Proximity	1	
65	<b>R150476</b>	3-3816, 3-6462, 57-4910	Screw - Bedknife 5/16-18 x 5/8	11	
65	<b>R150477</b>	57-4910	Screw - Bedknife 5/16-18 x 1/2	11	
66	<b>R63-9510</b>	63-9480, 63-9510	Bushing - Rubber For Bed Bar	2	
67	<b>R52-2890</b>	52-2890	Bushing - Flanged	4	
68	<b>R52-2860</b>	119-4150, 52-2860	Washer - Bed Bar Pivot	4	
69	<b>R52-2900</b>	52-2900	Washer - Nylon	4	
70	<b>R65-6450</b>	65-6450	Bracket - LH	1	
71	<b>R65-6460</b>	65-6460	Bracket - RH	1	
72	<b>R65-8770</b>	65-8770	Bushing	2	

All original equipment manufacturers names and part numbers are used for identification purposes only, and we are in no way implying that our products are original equipment parts. Prices subject to change without notice.





## Replaces Toro Greensmaster 800 Parts

Mower - Model 04054

Reel & Bedknife



Item No	R&R Part No.	OEM Part No.	Description	Qty Req	Order Quantity
73	R251-318	251-11, 251-204, 251-318, 251-38, 251-89	Bearing - Ball	1	
74	R3290-485	3290-485	Washer - Wave	1	
75	R364170	253-118, 62-3400	Seal	1	
76	R251-336	251-336	Bearing	2	
77	R38-7820	100-1048, 251-277, 251-5, 38-7820	Bearing - Ball	4	
78	R251-338	251-338	Bearing - Ball	3	
79	R32151-92	32151-92	Retaining Ring	1	
80	R71-1360	251-219, 251-253, 251-254, 251-320, 71-1360, 88-7880, 94-3405	Bearing	2	
81	R65-8640	65-6090, 65-8640	Housing - Bearing	2	
82	R119-4156	119-4156	Spring - Compression	2	
83	R99-2098	99-2098	Washer - Bed Bar Adjuster	2	
84	R99-2096	99-2096	Screw - Bed Bar Adjustment - M10 Thrd 1 End	2	
84	R115-7039	115-7039	Screw - Adjuster - Bedbar	2	
85	R32120-93	32120-93	Snap Ring - HD	2	

All original equipment manufacturers names and part numbers are used for identification purposes only, and we are in no way implying that our products are original equipment parts. Prices subject to change without notice.



## Replaces Toro Greensmaster 800 Parts

Mower - Model 04054

Reel & Bedknife



Item No	R&R Part No.	OEM Part No.	Description	Qty Req	Order Quantity
86	<b>R106-5335</b>	106-5335	Wave Washer - Reel Adjusting	2	
87	<b>R106-5344</b>	106-5344	Bushing - Flanged and Keyed	4	
88	<b>R99-2097</b>	99-2097	Detent - Bed Bar Adjuster	2	
89	<b>R106-5363</b>	106-5363	Shaft - Adjusting - Bed Bar - Stainless	2	
90	<b>R99-7420</b>	100-8493, 99-7420	Plug-Hole	1	
92	<b>R65-6290</b>	65-6259, 65-6290	Spring-Detent	1	
93	<b>R93-9014</b>	65-7020, 92-7676, 93-9014	Pin-Clutch, Actuat	1	
94	<b>R133-8897</b>	121-6355, 133-8897	Recoil Starter Assy	1	
95	<b>R121-0675</b>	121-0675	Fuel Strainer Assy	1	
96	<b>R94-5870</b>	94-5870	Cable - Clutch Assy	1	
97	<b>R120-2709</b>	120-2709	Cable- Throttle	1	
98	<b>R130-0107</b>	130-0107	Cable Assy - Clutch Control	1	
99	<b>R115-1714</b>	115-1714	Cable - Brake	2	

All original equipment manufacturers names and part numbers are used for identification purposes only, and we are in no way implying that our products are original equipment parts. Prices subject to change without notice.