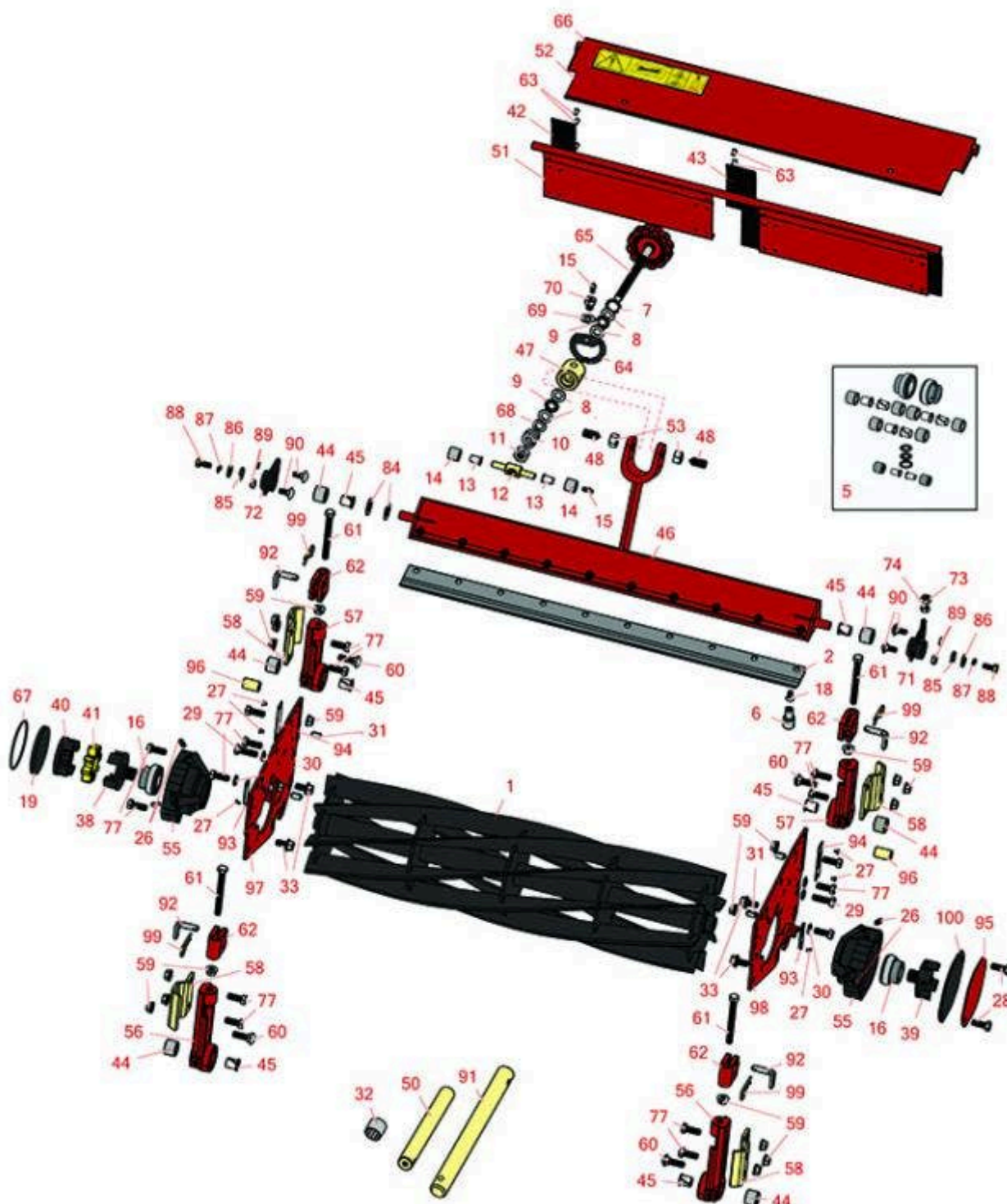




Replaces Toro Reelmaster 2300D Parts

27in Cutting Unit - Models 03461 & 03462

Reel & Bedknife



All original equipment manufacturers names and part numbers are used for identification purposes only, and we are in no way implying that our products are original equipment parts. Prices subject to change without notice.



Replaces Toro Reelmaster 2300D Parts

27in Cutting Unit - Models 03461 & 03462

Reel & Bedknife



| Item No | R&R Part No. | OEM Part No. | Description | Qty Req | Order Quantity |
|---------|--------------|--------------|-------------|---------|----------------|
|---------|--------------|--------------|-------------|---------|----------------|

R&R Reels, Lifetime Guaranteed

| | | | | | |
|---|-----------------|---|--------------------------|---|--|
| 1 | R94-3631 | 93-8839, 94-3631, 99-3468, 99-3482 | Reel - 5 Blade Fits 27x7 | 3 | |
|---|-----------------|---|--------------------------|---|--|

Detail Description: R&R Reel blades are expertly crafted from premium high carbon-boron alloy steel, heat-treated to perfectly complement both R&R and OEM bedknives. Each reel undergoes precision cylindrical grinding on bearing surfaces, followed by relief grinding for optimal performance. Advanced computer balancing ensures extended reel and bearing life. Backed by our lifetime guarantee against defects in materials and craftsmanship under normal use, R&R Reels deliver unmatched durability and cutting precision you can trust.:

| | | | | | |
|---|-----------------|---|--------------------------|---|--|
| 1 | R94-3630 | 93-8833, 94-3630, 99-3469, 99-3483 | Reel - 8 Blade Fits 27x7 | 3 | |
|---|-----------------|---|--------------------------|---|--|

Detail Description: R&R Reel blades are expertly crafted from premium high carbon-boron alloy steel, heat-treated to perfectly complement both R&R and OEM bedknives. Each reel undergoes precision cylindrical grinding on bearing surfaces, followed by relief grinding for optimal performance. Advanced computer balancing ensures extended reel and bearing life. Backed by our lifetime guarantee against defects in materials and craftsmanship under normal use, R&R Reels deliver unmatched durability and cutting precision you can trust.:

R&R Bedknives, Lifetime Guaranteed

| | | | | | |
|---|-----------------|----------------------------------|--------------------------------|---|--|
| 2 | R62-5180 | 105-6785, 61-0800, 62-5180 | Bedknife - Lowcut - 27 in Unit | 1 | |
|---|-----------------|----------------------------------|--------------------------------|---|--|

Detail Description: R&R Bedknives are manufactured from high carbon-boron alloy steel and then hardened to RC46-49 to match the temper of our reel blades and original equipment reels. Bedknives are surface ground on the top and front edge and straightened three times before being packaged with oil for rust prevention. All R&R Bedknives now have an increased front edge grind for added life. All R&R Bedknives are guaranteed against defects in material and workmanship under normal use for the life of the part.:

| | | | | | |
|---|------------------|----------|---------------------------------|---|--|
| 2 | R104-1380 | 104-1380 | Bedknife - Highcut - 27 in Unit | 1 | |
|---|------------------|----------|---------------------------------|---|--|

All original equipment manufacturers names and part numbers are used for identification purposes only, and we are in no way implying that our products are original equipment parts. Prices subject to change without notice.



Replaces Toro Reelmaster 2300D Parts

27in Cutting Unit - Models 03461 & 03462
Reel & Bedknife



| Item No | R&R Part No. | OEM Part No. | Description | Qty Req | Order Quantity |
|---------|--------------|--------------|-------------|---------|----------------|
|---------|--------------|--------------|-------------|---------|----------------|

Detail Description: R&R Bedknives are manufactured from high carbon-boron alloy steel and then hardened to RC46-49 to match the temper of our reel blades and original equipment reels. Bedknives are surface ground on the top and front edge and straightened three times before being packaged with oil for rust prevention. All R&R Bedknives now have an increased front edge grind for added life. All R&R Bedknives are guaranteed against defects in material and workmanship under normal use for the life of the part.:

R&R Razor Tool Steel Bedknives, Lifetime Guaranteed

| | | | | |
|---|------------------|----------|---|---|
| 2 | R112-8910 | 112-8910 | Bedknife - Razor Tool Steel - 27 High Cut | 1 |
|---|------------------|----------|---|---|

Detail Description: R&R Razor bedknives are manufactured from premium alloy tool steel steel and then hardened to RC48-51 to match the temper of our Razor reel blades and original equipment premium series reels. Bedknives are surface ground on the top and front edge and specially packaged for rust prevention. All R&R Bedknives now have an increased front edge grind for added life. All R&R Bedknives are guaranteed against defects in material and workmanship under normal use for the life of the part. You can expect up to double the life over standard bedknives.:

Overhaul Kits

| | | | | |
|---|----------------|--|-----------------------------|---|
| 5 | R150545 | | Overhaul Kit - Cutting Unit | 1 |
|---|----------------|--|-----------------------------|---|

Detail Description: Includes 6 ea.: R56-9510 Rubber Bushings, R56-9520 Nyliner Bushings; 2 ea.: R52-2890 Bushings, R71-1360 Reel Bearings, R62-5510 Bushings, R257-6 Thrust Bearings; 1 ea.: R253-84 Seal:

Service Tools

| | | | | |
|---|-----------------|---------|----------------------------|---|
| 6 | R51-0880 | 51-0880 | Bedknife Screw Driver Tool | 0 |
|---|-----------------|---------|----------------------------|---|

Detail Description: Easily install and remove bed knife screws with the help of a ratchet with 3/8" drive. Tool manufactured with hardened alloy steel.:

Other Parts Available

| | | | | |
|----|-----------------|-------------------|---------------------------|---|
| 7 | R253-84 | 253-84, 7-0044 | Seal - Micro Adj. | 1 |
| 8 | R257-5 | 257-5 | Washer - Thrust | 4 |
| 9 | R257-6 | 257-6 | Bearing - Thrust | 2 |
| 10 | R57-5270 | 57-5270 | Spring - Adjusting Handle | 1 |

All original equipment manufacturers names and part numbers are used for identification purposes only, and we are in no way implying that our products are original equipment parts. Prices subject to change without notice.



Replaces Toro Reelmaster 2300D Parts

27in Cutting Unit - Models 03461 & 03462

Reel & Bedknife



| Item No | R&R Part No. | OEM Part No. | Description | Qty Req | Order Quantity |
|--|------------------|---|--|---------|----------------|
| 11 | R3296-62 | 3296-62 | Locknut - 1/2-20 LH Jam | 1 | |
| 12 | R57-5260 | 107-7409, 57-5260 | Pivot - 1/2-20 - Bed Bar | 1 | |
| 13 | R52-2890 | 52-2890 | Bushing - Flanged | 2 | |
| 14 | R62-5510 | 52-2870, 62-5510 | Bushing | 2 | |
| 15 | R302-18 | 302-18 | Zerk - Grease Press Style | 1 | |
| 16 | R71-1360 | 251-219, 251-253, 251-254, 251-320, 71-1360, 88-7880, 94-3405 | Bearing | 2 | |
| 16 | R100-4926 | 100-4926 | Bearing - Reel Self Aligning | 2 | |
| 18 | R150475 | 3-6462 | Screw - Bedknife Stainless 5/16-18 x 5/8 | 10 | |
| <i>Detail Description: Pre-Packaged in bags of 50:</i> | | | | | |
| 18 | R150476 | 3-3816, 3-6462, 57-4910 | Screw - Bedknife 5/16-18 x 5/8 | 10 | |
| 19 | R94-2703 | 94-2703 | Plug - Plastic Spindle Housing | 1 | |

All original equipment manufacturers names and part numbers are used for identification purposes only, and we are in no way implying that our products are original equipment parts. Prices subject to change without notice.



Replaces Toro Reelmaster 2300D Parts

27in Cutting Unit - Models 03461 & 03462

Reel & Bedknife



| Item No | R&R Part No. | OEM Part No. | Description | Qty Req | Order Quantity |
|---------|--------------|--|------------------------------|---------|----------------|
| 26 | R302-5 | 21-6010, 302-11, 302-37, 302-47, 302-5, 302-57, 302-58, 302-6, 31-0300, 32-9660, 60-0800, 62-3880, 92-4181 | Fitting - Grease | 0 | |
| 27 | R3290-55 | 3290-55 | Rivet - 5/32 x 3/8 Pop Rivet | 6 | |
| 28 | R323-2 | 01-178-0604, 323-2 | Bolt - Hex HD 3/8-16 x 1 | 2 | |
| 29 | R400264 | 01-150-0180, 01-178-0610, 20-48-AD, 20-48-AGD, 32-9160, 3224-3, 323-29, 323-7, 400264, 908035P | Bolt - Hex HD 3/8-16 x 1-1/4 | 2 | |
| 30 | R3254-6 | 01-166-0010, 01-166-0280, 01-166-0610, 3253-5, 3254-18, 3254-6, 3290-223, 48-9370 | Washer - Lock 3/8 | 0 | |
| 31 | R32121-36 | 32121-36 | Pin-Spring | 4 | |
| 32 | R3-0348 | 3-0348 | Bushing | 12 | |
| 33 | R110-1718 | 110-1718 | Screw-HHF | 0 | |
| 38 | R93-8825 | 93-8825 | Coupling - RH Reel | 1 | |

All original equipment manufacturers names and part numbers are used for identification purposes only, and we are in no way implying that our products are original equipment parts. Prices subject to change without notice.



Replaces Toro Reelmaster 2300D Parts

27in Cutting Unit - Models 03461 & 03462

Reel & Bedknife



| Item No | R&R Part No. | OEM Part No. | Description | Qty Req | Order Quantity |
|----------------------------------|-----------------|------------------------------------|---------------------------------------|---------|----------------|
| 39 | R93-8826 | 93-8826 | Coupling - LH Reel | 1 | |
| 40 | R93-8823 | 93-8823 | Coupling - Motor End | 1 | |
| 41 | R93-8827 | 93-8827 | Spider - Reel Coupling | 1 | |
| 42 | R61-3280 | 61-3280 | Cover - Rubber Side | 2 | |
| 43 | R61-3290 | 61-3290 | Cover - Rubber Center | 2 | |
| 44 | R56-9510 | 56-9510 | Bushing - Rubber For Bed Bar / RI | 6 | |
| 45 | R56-9520 | 56-9520 | Bushing - Nyliner | 6 | |
| 46 | R61-1210 | 61-1210, 61-1210-01 | Backing Bar - Bed Knife | 1 | |
| <i>Tech Note: Fits 27" Unit:</i> | | | | | |
| 47 | R52-2980 | 52-2980 | Housing - Pivot Spa | 1 | |
| 48 | R57-5190 | 32110-19, 57-5190 | Screw - Adjusting | 2 | |
| 50 | R92-1815 | 92-1815 | Shaft - Front Pivot | 2 | |
| 51 | R93-8849 | 61-1130, 93-8817, 93-8849 | Shield - Rear Grass Fits 27 in Units | 1 | |
| 52 | R94-3621 | 94-3621 | Shield - Top Incl. Safety Decal 27 in | 1 | |
| 53 | R443818 | 01-191-0813, 3218-18, 3218-5 | Nut - 1/2-13 Hex Jam Zinc | 2 | |
| 55 | R99-3404 | 93-6930, 99-3404 | Housing-Bearing | 2 | |
| 56 | R61-0430 | 61-0430, 61-0430-01 | Bracket - Long - Rear Roller | 2 | |
| 56 | R14-4479 | 14-4479 | Bracket - Assy - Rear Roller | 2 | |

All original equipment manufacturers names and part numbers are used for identification purposes only, and we are in no way implying that our products are original equipment parts. Prices subject to change without notice.



Replaces Toro Reelmaster 2300D Parts

27in Cutting Unit - Models 03461 & 03462

Reel & Bedknife



| Item No | R&R Part No. | OEM Part No. | Description | Qty Req | Order Quantity |
|---------|-----------------|--|--------------------------------|---------|----------------|
| 57 | R61-0440 | 61-0440 | Bracket - Short - Front Roller | 2 | |
| 57 | R14-4489 | 14-4489 | Bracket - Assy - Front Roller | 2 | |
| 58 | R61-0910 | 61-0910 | Bracket | 4 | |
| 59 | R3296-39 | 32127-25, 32128-36, 3290-357, 3296-17, 3296-22, 3296-39, 915663P, 99-7443 | Locknut - 3/8-16 Nylon | 16 | |
| 60 | R3231-25 | 01-173-0610, 30-9970, 3231-25, 3231-3, 900064P | Bolt - Carriage 3/8-16 x 1-1/4 | 2 | |
| 61 | R61-0790 | 323-57, 61-0790 | Bolt - Roller Adjustment | 4 | |
| 62 | R61-0420 | 61-0420, 61-0420-01 | Support - HOC | 4 | |
| 63 | R3295-48 | 3295-48 | Rivet - 3/16 x 3/8 Tub | 12 | |
| 63 | R700382 | 700382 | Rivet - Guard | 12 | |
| 64 | R52-3000 | 52-3000 | Arm - Spring | 1 | |
| 65 | R61-1070 | 61-1070 | Handle - Bed Bar Adjustment | 1 | |
| 65 | R94-5067 | 94-5067 | Handle - Adjusting | 1 | |
| 66 | R93-8064 | 93-8064 | Decal - Warning | 1 | |
| 67 | R353-949 | 353-949, 60-3520 | O-Ring | 1 | |
| 68 | R29-8870 | 29-8870 | Washer - Adj. Handle | 1 | |

All original equipment manufacturers names and part numbers are used for identification purposes only, and we are in no way implying that our products are original equipment parts. Prices subject to change without notice.



Replaces Toro Reelmaster 2300D Parts

27in Cutting Unit - Models 03461 & 03462

Reel & Bedknife



| Item No | R&R Part No. | OEM Part No. | Description | Qty Req | Order Quantity |
|---------|-----------------|--|---------------------------------|---------|----------------|
| 69 | R187-0 | 3256-25, 7-0032 | Washer - Flat 7/16 SAE | 1 | |
| 70 | R52-2990 | 324-25, 52-2990 | Bolt - Spring Retainer | 1 | |
| 71 | R93-6855 | 93-6855 | Housing - Bed Bar Adj. | 1 | |
| 71 | R16-9769 | 16-9769 | Housing - Bed Bar - Adj. Side | 1 | |
| 72 | R61-1010 | 61-1010 | Housing - Bed Bar | 1 | |
| 72 | R14-4459 | 14-4459 | Housing - w/Bushing For Bed Bar | 1 | |
| 73 | R444754 | 01-189-0518, 3296-4 | Locknut - 5/16-24 Center | 1 | |
| 74 | R3219-2 | 01-188-0524, 22-12-BJKD, 3219-2, 915720 | Nut - 5/16-24 Zinc | 1 | |
| 77 | R323-6 | 01-150-0010, 01-178-0608, 20-47-AD, 20-47-AGD, 3224-2, 323-6, 49-3510, 908034P, 908332 | Bolt - Hex HD 3/8-16 x 1 GR5 YZ | 8 | |
| 84 | R61-1950 | 61-1950 | Washer - Nylon - Bed Bar | 1 | |
| 85 | R62-7120 | 62-7120 | Washer | 1 | |
| 86 | R3256-56 | 3256-56, 60-4750 | Washer | 1 | |

All original equipment manufacturers names and part numbers are used for identification purposes only, and we are in no way implying that our products are original equipment parts. Prices subject to change without notice.



Replaces Toro Reelmaster 2300D Parts

27in Cutting Unit - Models 03461 & 03462

Reel & Bedknife



| Item No | R&R Part No. | OEM Part No. | Description | Qty Req | Order Quantity |
|---------|--------------|---|------------------------------------|---------|----------------|
| 87 | R3253-4 | 01-166-0110, 01-166-0510, 23-10-GD, 24-7170, 30-8520, 3253-4, 48-9350, 48-9360, 48-9570, 68-9420, 99-7577 | Washer - Lock 5/16 Zinc | 1 | |
| 88 | R322-3 | 01-150-1420, 01-178-0506, 20-24-AD, 20-24-AGD, 322-3, 48-9270, 513339, 908017P | Bolt - Hex HD 5/16-18 x 3/4 | 1 | |
| 89 | R3296-29 | 1-804256, 3290-357, 3296-29, 915662P | Locknut - 5/16-18 ESNA | 4 | |
| 90 | R3230-1 | 01-173-0506, 3230-1, 3230-20, 900037P | Bolt - Carriage 5/16-18 x 3/4 | 4 | |
| 91 | R95-8979 | 95-8979 | Shaft - Pivot - 11.687 in Hardened | 3 | |
| 92 | R71-3690 | 61-0630, 71-3690 | Spade - Bent | 4 | |
| 93 | R61-3790 | 61-3790 | Plate-HOC, Front | 2 | |
| 94 | R61-3800 | 61-3800 | Plate - HOC Rear | 2 | |
| 95 | R93-6960 | 93-6960 | Cover - Bearing Holder | 1 | |
| 96 | R93-6981 | 93-6981 | Spacer | 8 | |

All original equipment manufacturers names and part numbers are used for identification purposes only, and we are in no way implying that our products are original equipment parts. Prices subject to change without notice.



Replaces Toro Reelmaster 2300D Parts

27in Cutting Unit - Models 03461 & 03462
Reel & Bedknife



| Item No | R&R Part No. | OEM Part No. | Description | Qty Req | Order Quantity |
|---------|--------------------|------------------------|----------------------|---------|----------------|
| 97 | R94-3695-01 | 94-3695, 94-3695-01 | Plate - Side Reel RH | 1 | |
| 98 | R94-3697-01 | 94-3697, 94-3697-01 | Plate - Side Reel LH | 1 | |
| 99 | R3290-467 | 3290-467 | Pin-Hair | 4 | |
| 100 | R94-5979 | 94-5979 | Gasket | 1 | |

All original equipment manufacturers names and part numbers are used for identification purposes only, and we are in no way implying that our products are original equipment parts. Prices subject to change without notice.