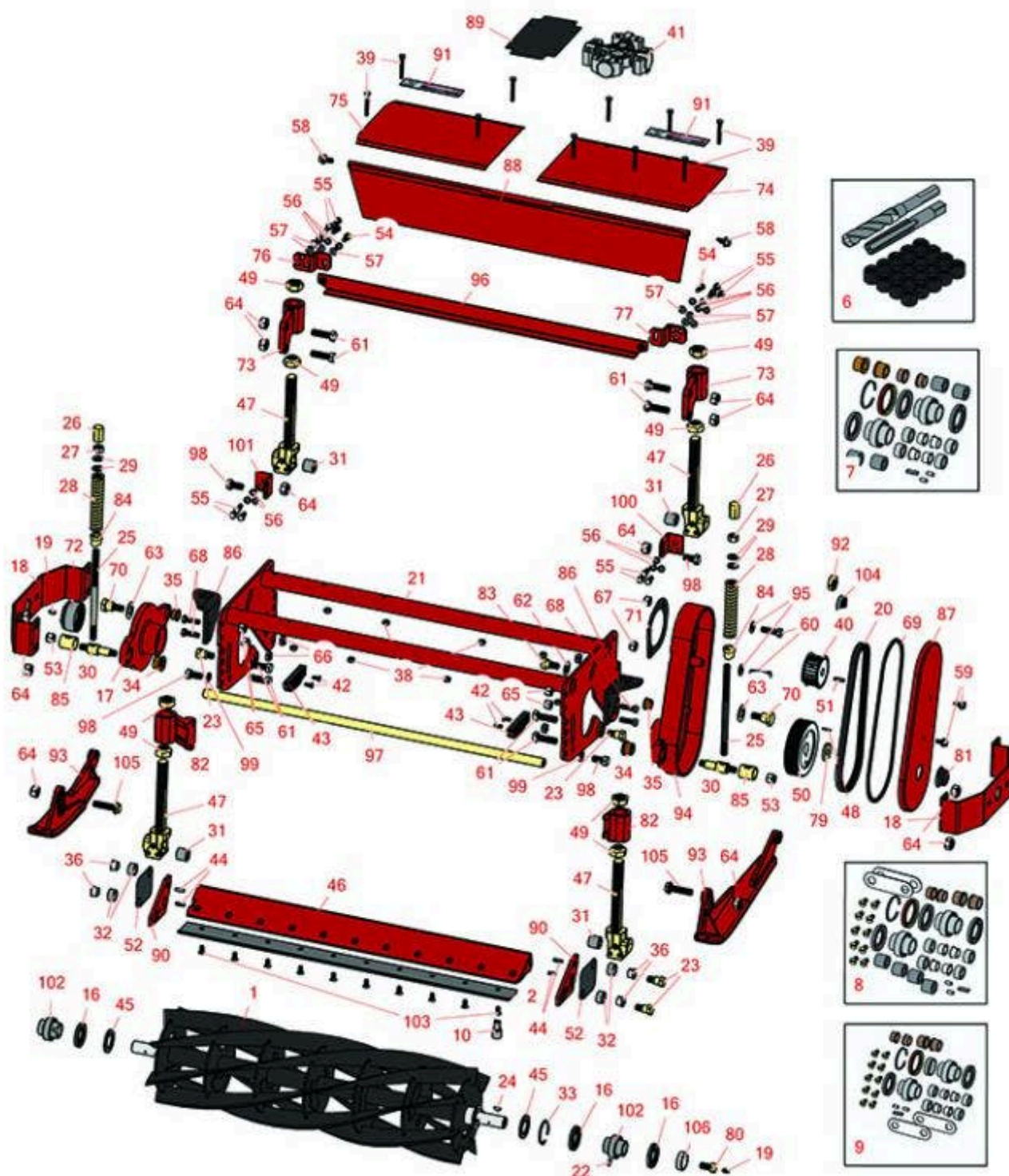




Replaces Toro Reelmaster 4500D Parts

Reel & Bedknife



All original equipment manufacturers names and part numbers are used for identification purposes only, and we are in no way implying that our products are original equipment parts. Prices subject to change without notice.



Replaces Toro Reelmaster 4500D Parts

Reel & Bedknife



Item No	R&R Part No.	OEM Part No.	Description	Qty Req	Order Quantity
---------	--------------	--------------	-------------	---------	----------------

R&R Reels, Lifetime Guaranteed

1	R13-8229	12-4459, 13-8229, 14-7419	Reel - 5 Blade	1	
---	-----------------	---------------------------------	----------------	---	--

Detail Description: R&R Reel blades are manufactured from high carbon-boron alloy steel and then hardened to RC46-49 to match the temper of our bedknives and original equipment bedknives. All R&R Reels are cylindrically ground on bearing surfaces and then relief ground. Reels are then precision computer balanced for extended bearing and reel life. R&R Products Reels are guaranteed against defects in material and workmanship for the life of the reel under normal use.:

1	R13-8219	12-4469, 13-8219	Reel - 7 Blade	1	
---	-----------------	---------------------	----------------	---	--

Detail Description: R&R Reel blades are manufactured from high carbon-boron alloy steel and then hardened to RC46-49 to match the temper of our bedknives and original equipment bedknives. All R&R Reels are cylindrically ground on bearing surfaces and then relief ground. Reels are then precision computer balanced for extended bearing and reel life. R&R Products Reels are guaranteed against defects in material and workmanship for the life of the reel under normal use.:

1	R14-0919	14-0919	Reel - 11 Blade	1	
---	-----------------	---------	-----------------	---	--

Detail Description: R&R Reel blades are expertly crafted from premium high carbon-boron alloy steel, heat-treated to perfectly complement both R&R and OEM bedknives. Each reel undergoes precision cylindrical grinding on bearing surfaces, followed by relief grinding for optimal performance. Advanced computer balancing ensures extended reel and bearing life. Backed by our lifetime guarantee against defects in materials and craftsmanship under normal use, R&R Reels deliver unmatched durability and cutting precision you can trust.:

R&R Bedknives, Lifetime Guaranteed

2	R72-0480	72-0480	Bedknife - High Cut	1	
---	-----------------	---------	---------------------	---	--

Tech Note: Use with 5 Blade Reel:

Detail Description: R&R Bedknives are manufactured from high carbon-boron alloy steel and then hardened to RC46-49 to match the temper of our reel blades and original equipment reels. Bedknives are surface ground on the top and front edge and straightened three times before being packaged with oil for rust prevention. All R&R Bedknives now have an increased front edge grind for added life. All R&R Bedknives are guaranteed against defects in material and workmanship under normal use for the life of the part.:

2	R59-5890	59-5890	Bedknife	1	
---	-----------------	---------	----------	---	--

All original equipment manufacturers names and part numbers are used for identification purposes only, and we are in no way implying that our products are original equipment parts. Prices subject to change without notice.



Replaces Toro Reelmaster 4500D Parts

Reel & Bedknife



Item No	R&R Part No.	OEM Part No.	Description	Qty Req	Order Quantity
---------	--------------	--------------	-------------	---------	----------------

Tech Note: Use with 7 Blade Reel:

Detail Description: R&R Bedknives are manufactured from high carbon-boron alloy steel and then hardened to RC46-49 to match the temper of our reel blades and original equipment reels. Bedknives are surface ground on the top and front edge and straightened three times before being packaged with oil for rust prevention. All R&R Bedknives now have an increased front edge grind for added life. All R&R Bedknives are guaranteed against defects in material and workmanship under normal use for the life of the part.:

2	R76-3620	76-3620	Bedknife	1
---	-----------------	---------	----------	---

Tech Note: Use with 11 Blade Reel:

Detail Description: R&R Bedknives are manufactured from high carbon-boron alloy steel and then hardened to RC46-49 to match the temper of our reel blades and original equipment reels. Bedknives are surface ground on the top and front edge and straightened three times before being packaged with oil for rust prevention. All R&R Bedknives now have an increased front edge grind for added life. All R&R Bedknives are guaranteed against defects in material and workmanship under normal use for the life of the part.:

Overhaul Kits & Service Tools

6	R150530		Repair Kit - Bed Bar	1
---	----------------	--	----------------------	---

Tech Note: Includes 20 ea: R150531 Insert; 1 ea: R150532 Drill, R150533 Tap:

Detail Description: Includes 20 ea: R150531 Insert; 1 ea: R150532 Drill, R150533 Tap:

7	R150540		Overhaul Kit - Cutting Unit	0
---	----------------	--	-----------------------------	---

Tech Note: Includes 4 ea.: R256-292 Bushings, R59-5780 Bushings, R62-6110 Bushings; 3 ea: R253-145 Seals; 2 ea: R256-252 Bushings, R48-8880 Pins, R59-6140 Bearings, R72-0430 Bushings; 1 ea: R32151-71 Ring, R75-7570 Key & R92-9250 Seal:

Detail Description: Includes 4 ea.: R256-292 Bushings, R59-5780 Bushings, R62-6110 Bushings; 3 ea: R253-145 Seals; 2 ea: R256-252 Bushings, R48-8880 Pins, R59-6140 Bearings, R72-0430 Bushings; 1 ea: R32151-71 Ring, R75-7570 Key & R92-9250 Seal:

8	R13-3679	13-3679	Overhaul Kit - Cutting Unit	0
---	-----------------	---------	-----------------------------	---

Tech Note: Includes 10 ea: R150476 Screws; 4 ea: R256-292 Bushings; R62-6110; 3 ea: R253-145 Seals; 2 ea: R256-113 Bushings, R256-252 Bushings, R48-8880 Pins, R48-9240 Spacers, R59-6140 Bearings, R72-0430 Bushings; 1 ea: R32151-71 Ring, R32... <Click Part# for more>:

All original equipment manufacturers names and part numbers are used for identification purposes only, and we are in no way implying that our products are original equipment parts. Prices subject to change without notice.



Replaces Toro Reelmaster 4500D Parts

Reel & Bedknife



Item No	R&R Part No.	OEM Part No.	Description	Qty Req	Order Quantity
<i>Detail Description: Includes 10 ea: R150476 Screws; 4 ea: R256-292 Bushings; R62-6110; 3 ea: R253-145 Seals; 2 ea: R256-113 Bushings, R256-252 Bushings, R48-8880 Pins, R48-9240 Spacers, R59-6140 Bearings, R72-0430 Bushings; 1 ea: R32151-71 Ring, R3257-3 Key & R75-7570 Reel Key:</i>					
9	R95-4389	14-2099, 95-4389	Overhaul Kit - Cutting Unit	0	
<i>Tech Note: Includes 10 ea: R150476 Screw; 4 ea: R256-292 Bushing, R62-6110 Bushing; 2 ea: R256-252 Bushing, R48-8880 Pin, R59-6140 Bearing, R48-9240 Spacer, R92-9252 Bushing, R253-145 Seal; 1 ea: R32151-71 Ring, R75-7570 Key, R92-9250 Seal, R92-9251 Sleeve:</i>					
<i>Detail Description: Includes 10 ea: R150476 Screw; 4 ea: R256-292 Bushing, R62-6110 Bushing; 2 ea: R256-252 Bushing, R48-8880 Pin, R59-6140 Bearing, R48-9240 Spacer, R92-9252 Bushing, R253-145 Seal; 1 ea: R32151-71 Ring, R75-7570 Key, R92-9250 Seal, R92-9251 Sleeve:</i>					
10	R51-0880	51-0880	Bedknife Screw Driver Tool	0	
<i>Detail Description: Easily install and remove bed knife screws with the help of a ratchet with 3/8" drive. Tool manufactured with hardened alloy steel.:</i>					
Other Parts Available					
16	R253-145	253-145	Seal - Oil Reel Assy	1	
16	R92-9250	92-9250	Seal - Reel	1	
17	R59-5550	59-5550	Housing - Bearing	1	
18	R72-0470	72-0470	Guard	1	
19	R302-5	21-6010, 302-11, 302-37, 302-47, 302-5, 302-57, 302-58, 302-6, 31-0300, 32-9660, 60-0800, 62-3880, 92-4181	Fitting - Grease	3	
20	R150520	47-7160	Belt - Cutting Unit	1	

All original equipment manufacturers names and part numbers are used for identification purposes only, and we are in no way implying that our products are original equipment parts. Prices subject to change without notice.



Replaces Toro Reelmaster 4500D Parts

Reel & Bedknife



Item No	R&R Part No.	OEM Part No.	Description	Qty Req	Order Quantity
21	R14-0829	14-0829, 59-6480	Frame - Cutting Unit	1	
22	R48-8880	48-8880	Pin - Reel Bearing	2	
23	R66-5570	62-6100, 66-5570, 84-6090	Bolt - Shoulder Bed Bar	4	
24	R75-7570	75-7570	Key - Reel 5/32 x 1/4 x.900	1	
25	R72-0390	72-0390	Rod - Bedknife Adjusting	2	
26	R72-0380	72-0380	Hex - Bedknife Adjuster	2	
27	R443818	01-191-0813, 3218-18, 3218-5	Nut - 1/2-13 Hex Jam Zinc	2	
28	R72-0400	72-0400, 92-9231	Spring - Bed Bar Adj	2	
29	R257-5	257-5	Washer - Thrust	4	
30	R72-0440	72-0440	Pin - Pivot - Bedknife Adj.	2	
31	R59-5780	59-5780	Bushing - Roller Bracket	4	
32	R62-6110	62-6110	Bushing - Rubber For Bed Bar	4	
33	R32151-71	32151-71	Ring - Snap Reel Brg	1	
34	R72-0430	72-0430	Bushing - Adj Pin - 5/8 ID x 1 1/8 Flange	2	
34	R92-9252	92-9252	Bushing - 5/8 ID x 1 1/4 Flange	2	
35	R256-252	256-252	Bushing - 3/4 ID x 1 Flange	2	
36	R256-292	104-7738, 256-292	Bushing - Nyliner Bed Bar	4	

All original equipment manufacturers names and part numbers are used for identification purposes only, and we are in no way implying that our products are original equipment parts. Prices subject to change without notice.



Replaces Toro Reelmaster 4500D Parts

Reel & Bedknife



Item No	R&R Part No.	OEM Part No.	Description	Qty Req	Order Quantity
38	R301504	2296-42, 301504, 32127-24, 32128-33, 32146-17, 3296-16, 3296-42, 3296-42 , 915661P	Locknut - ESNA 1/4-20	10	
39	R3234-34	321-11, 323-12, 3234-34	Bolt - Hex Washer 1/4 x 2	10	
39	R400120	01-150-0990, 01-178-0416, 02-150-0990, 321-11, 3222-4, 33114-010, 33114-060, 513327, 908470	Bolt - Hex HD 1/4-20 x 2	0	
40	R47-7150	47-7150	Pulley - Belt Drive	1	
41	R59-5910	59-5910	U-joint	1	
42	R301503	32108-101	Screw - 1/4-20 x 5/8 Mach	4	
43	R77-4810	62-6070, 77-4810	Block - Deflector	2	
44	R32121-11	32121-11	Pin - Roll 1/4 x 3/4	4	
45	R38-7330	38-7330	Shield - Grass	2	
46	R59-5470	59-5470, 59-5470-01	Backing Bar - Bed Knife	1	
46	R77-4340	77-4330, 77-4340, 77-4340-01	Backing Bar - 11 Blade Reel	1	

All original equipment manufacturers names and part numbers are used for identification purposes only, and we are in no way implying that our products are original equipment parts. Prices subject to change without notice.



Replaces Toro Reelmaster 4500D Parts

Reel & Bedknife



Item No	R&R Part No.	OEM Part No.	Description	Qty Req	Order Quantity
47	R84-6100	59-5700, 84-6100	Bracket - Roller w/Rubber Bushing	4	
47	R84-6100S		Bracket - Roller w/o Bush 562 ID	4	
48	R32121-50	32121-50	Pin - Roll Spiral Lock 1/8 1147	1	
49	R59-5820	59-5820	Nut - Cone Roller Adj Bkt	8	
50	R47-7140	47-7140	Pulley - Driven Timing Belt	1	
51	R47-2380	47-2380	Key - Drive Pulley	1	
52	R48-9240	48-9240, 76-3580	Spacer - Shim Bed Bar	0	
53	R32128-15	32128-15, 3290-229	Locknut - 1/2-20 Flanged	4	
54	R322-3	01-150-1420, 01-178-0506, 20-24-AD, 20-24-AGD, 322-3, 48-9270, 513339, 908017P	Bolt - Hex HD 5/16-18 x 3/4	2	
55	R400184	322-2, 322-3	Screw - 5/16-18 x 3/4 Hex	6	
56	R3253-4	01-166-0110, 01-166-0510, 23-10-GD, 24-7170, 30-8520, 3253-4, 48-9350, 48-9360, 48-9570, 68-9420, 99-7577	Washer - Lock 5/16 Zinc	8	

All original equipment manufacturers names and part numbers are used for identification purposes only, and we are in no way implying that our products are original equipment parts. Prices subject to change without notice.



Replaces Toro Reelmaster 4500D Parts

Reel & Bedknife



Item No	R&R Part No.	OEM Part No.	Description	Qty Req	Order Quantity
57	R453009	01-166-0400, 24-10-BD, 24-9-AD, 32-9650, 3256-2, 3256-23, 3256-3, 3256-67, 3290-217, 3556-3, 4-2390, 7-0152	Washer - Flat 5/16 SAE	8	
58	R3234-12	3234-12	Bolt - Hex Serrated Washer HD	2	
59	R3234-14	3234-14, 3234-23	Bolt - Hex Serrated Washer HD	2	
60	R324-6	01-150-1690, 01-178-0712, 20-68-AGD, 3225-3, 324-6	Bolt - Hex HD 7/16-14 x 1-1/2	2	
61	R325-7	01-150-0380, 01-178-0814, 3226-3, 325-7, 48-9490	Bolt - 1/2-13 x 1 3/4 Hex HD Gr 5	4	
62	R3256-69	3256-69	Washer - Flat	1	
63	R3290-440	3290-440	Washer - Belleville	2	
64	R3296-25	30-3380, 32127-21, 32127-31, 3290-160, 3290-33, 3296-13, 3296-25, 3296-45, 329645	Locknut - 1/2-13 Heavy ESNA	4	
65	R3296-26	3296-26	Locknut - 3/8-16 ESNA Heavy	4	

All original equipment manufacturers names and part numbers are used for identification purposes only, and we are in no way implying that our products are original equipment parts. Prices subject to change without notice.



Replaces Toro Reelmaster 4500D Parts

Reel & Bedknife



Item No	R&R Part No.	OEM Part No.	Description	Qty Req	Order Quantity
66	R3296-28	119-4154, 140-9234, 32127-34, 32128-7, 32128-8, 32136-7, 3296-28	Nut - 1/2-20 ESNA Jam	2	
67	R3296-48	119-4039, 32146-7, 3296-34, 3296-48	Locknut - 7/16-14 ESNA	2	
68	R400264	01-150-0180, 01-178-0610, 20-48-AD, 20-48-AGD, 32-9160, 3224-3, 323-29, 323-7, 400264, 908035P	Bolt - Hex HD 3/8-16 x 1-1/4	4	
69	R47-7170	47-7170	Gasket - Cover	1	
70	R48-9020	48-9020	Bolt - Shoulder 1/2-20	2	
71	R48-9050	48-9050	Plate - Drive	1	
72	R59-5560	59-5560	Cap - Dust	1	
73	R59-5770	59-5770	Bracket - Rear Roller	2	
74	R59-5830	59-5830, 59-5830-01	Cover - Inner Grass Shield	1	
75	R59-5840	59-5840	Cover - Outer Grass Shield	1	
76	R59-6070	59-6070	Bracket - Scraper RH	1	
77	R59-6080	59-6080	Bracket - Scraper LH	1	
79	R59-6150	59-6150	Washer - Reel Pulley	1	

All original equipment manufacturers names and part numbers are used for identification purposes only, and we are in no way implying that our products are original equipment parts. Prices subject to change without notice.



Replaces Toro Reelmaster 4500D Parts

Reel & Bedknife



Item No	R&R Part No.	OEM Part No.	Description	Qty Req	Order Quantity
80	R59-6190	59-6190	Bolt - Reel Special	1	
81	R59-7490	59-7490	Caplug	1	
82	R62-5960	62-5960	Bracket - LH Roller	2	
82	R62-5980	62-5980	Bracket - RH Roller	2	
82	R84-6040	84-6040	Bracket - RH Roller	2	
82	R84-6050	84-6050	Bracket - LH Roller	2	
83	R62-6080	62-6080	Bolt - Shoulder	1	
84	R72-0410	72-0410	Stand - Off	2	
85	R72-0420	72-0420	Tube - Clamp	2	
86	R72-0450	72-0450	Bracket - RH Bedknife Adj	1	
86	R72-0460	72-0460	Bracket - LH Bedknife Adj	1	
87	R75-7580	75-7580, 75-7580-01	Cover - Drive RH	1	
87	R75-7590	75-7590, 75-7590-01	Cover - Drive LH	1	
88	R75-7680	51-1600, 52-9660, 75-7680, 75-7680-01	Deflector	1	
89	R75-8100	75-8100	Cover - Center	1	
90	R76-3600	76-3600	Plate - LH End - Bed Bar	1	
90	R76-3610	76-3610	Plate - RH End Bed Bar	1	
91	R76-8760	76-8760	Decal	2	
92	R82-9390	82-9390	Nut - Special Drive Housing	2	

All original equipment manufacturers names and part numbers are used for identification purposes only, and we are in no way implying that our products are original equipment parts. Prices subject to change without notice.



Replaces Toro Reelmaster 4500D Parts

Reel & Bedknife



Item No	R&R Part No.	OEM Part No.	Description	Qty Req	Order Quantity
93	R84-0810	59-5990, 84-0810	Skid - LH	1	
93	R84-0820	59-5980, 84-0820	Skid - RH	1	
94	R92-6098	92-6098	Housing - RH	1	
94	R92-6099	92-6099	Housing - Drive LH	1	
95	R187-0	3256-25, 7-0032	Washer - Flat 7/16 SAE	1	
96	R150521		Bar - Scraper	1	
97	R93-7769	93-7769	Rod - Support	1	
98	R325-4	01-150-0280, 01-178-0806, 01-178-0808, 20-85-AD, 20-85-AGD, 325-1, 325-2, 325-4	Bolt - Hex HD 1/2-13 x 1	2	
99	R3253-7	01-166-0030, 01-166-0080, 01-166-0290, 01-166-0810, 23-13-GD, 3253-7, 48-9380	Washer - Lock 1/2	2	
100	R59-6000	59-6000	Bracket - Skid RH	1	
101	R59-6010	59-6010	Bracket - Skid LH	1	
102	R59-6140	251-298, 48-8860, 59-6140	Bearing - Reel	2	
103	R150475	3-6462	Screw - Bedknife Stainless 5/16-18 x 5/8	0	

All original equipment manufacturers names and part numbers are used for identification purposes only, and we are in no way implying that our products are original equipment parts. Prices subject to change without notice.



Replaces Toro Reelmaster 4500D Parts

Reel & Bedknife



Item No	R&R Part No.	OEM Part No.	Description	Qty Req	Order Quantity
<i>Detail Description: Pre-Packaged in bags of 50:</i>					
103	R150476	3-3816, 3-6462, 57-4910	Screw - Bedknife 5/16-18 x 5/8	0	
104	R66-5710	117-8976, 66-5710	Seal - Hyd Motor Shaft	1	
105	R3234-27	3234-27	Bolt - 1/2-13 x 2 Hex	2	
106	R92-9251	92-9251	Sleeve - Wear Reel Bearing	1	

All original equipment manufacturers names and part numbers are used for identification purposes only, and we are in no way implying that our products are original equipment parts. Prices subject to change without notice.